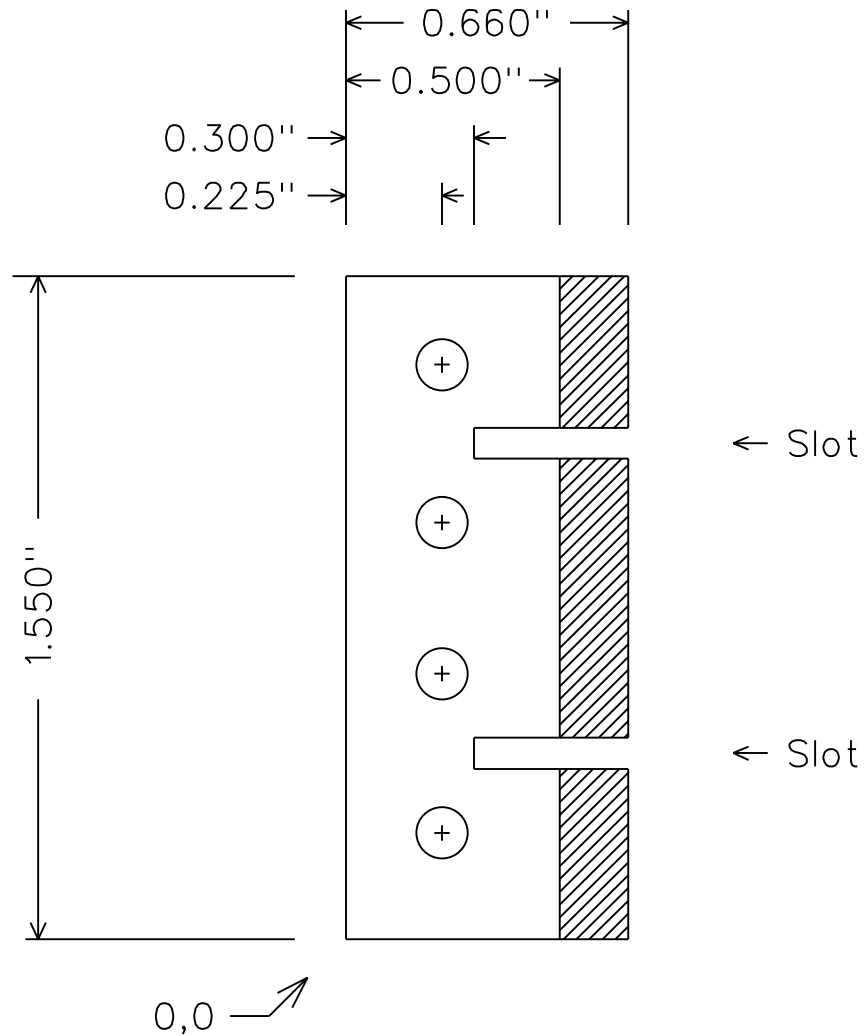


MTP Backing Plate



Material: hard aluminum 0.125" thick

There are four 4-40 tapped holes.
They are located Up from the 0,0 corner by:
1.345" 0.975" 0.620" 0.250"

There are two Slots each about 60 mils wide.
The Centers of the Slots are located Up
from the 0,0 corner by: 1.160" 0.435"

The hatched section is to be cut down by removing
material from the upper surface in this drawing
until an 80 mil thick base remains.