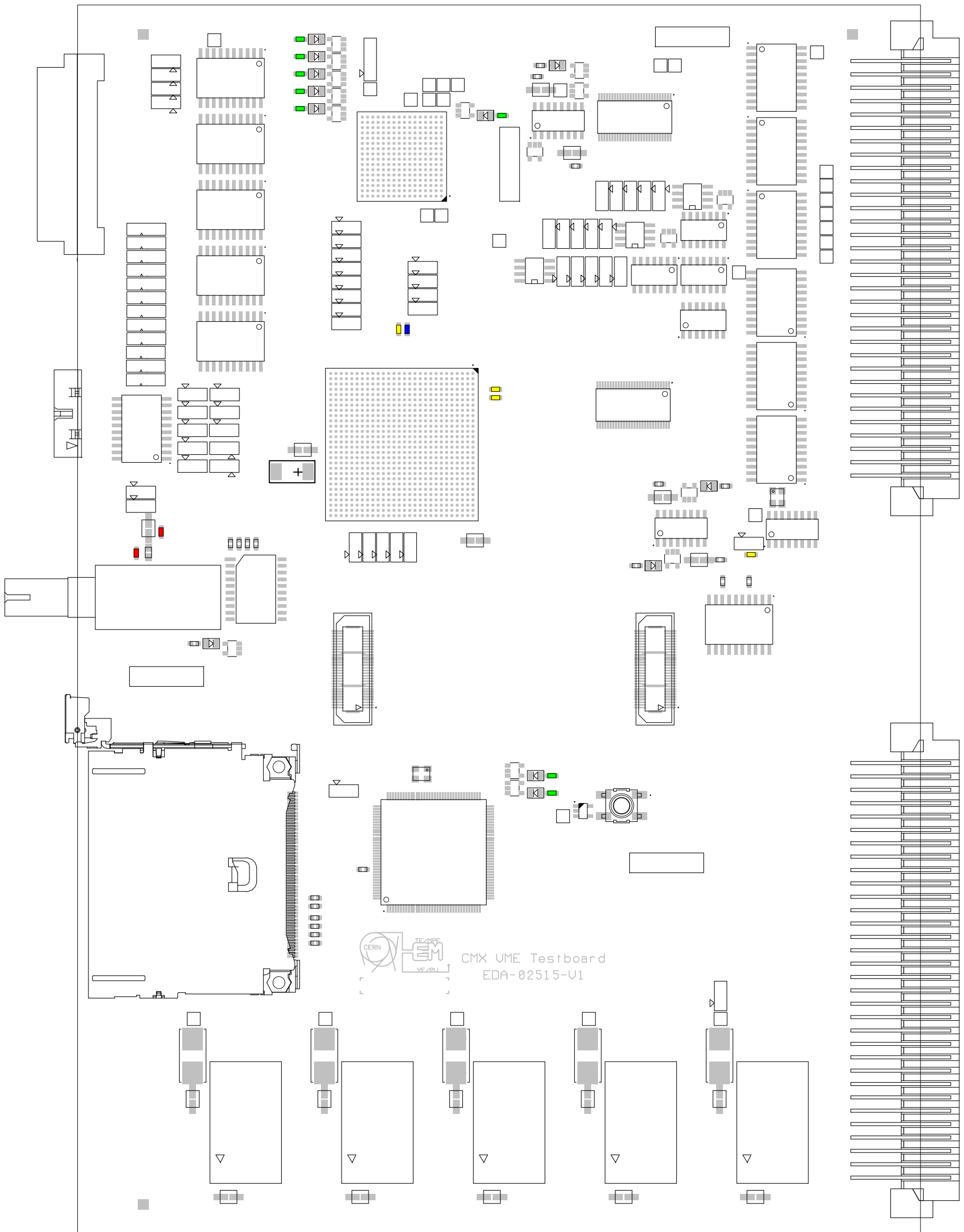
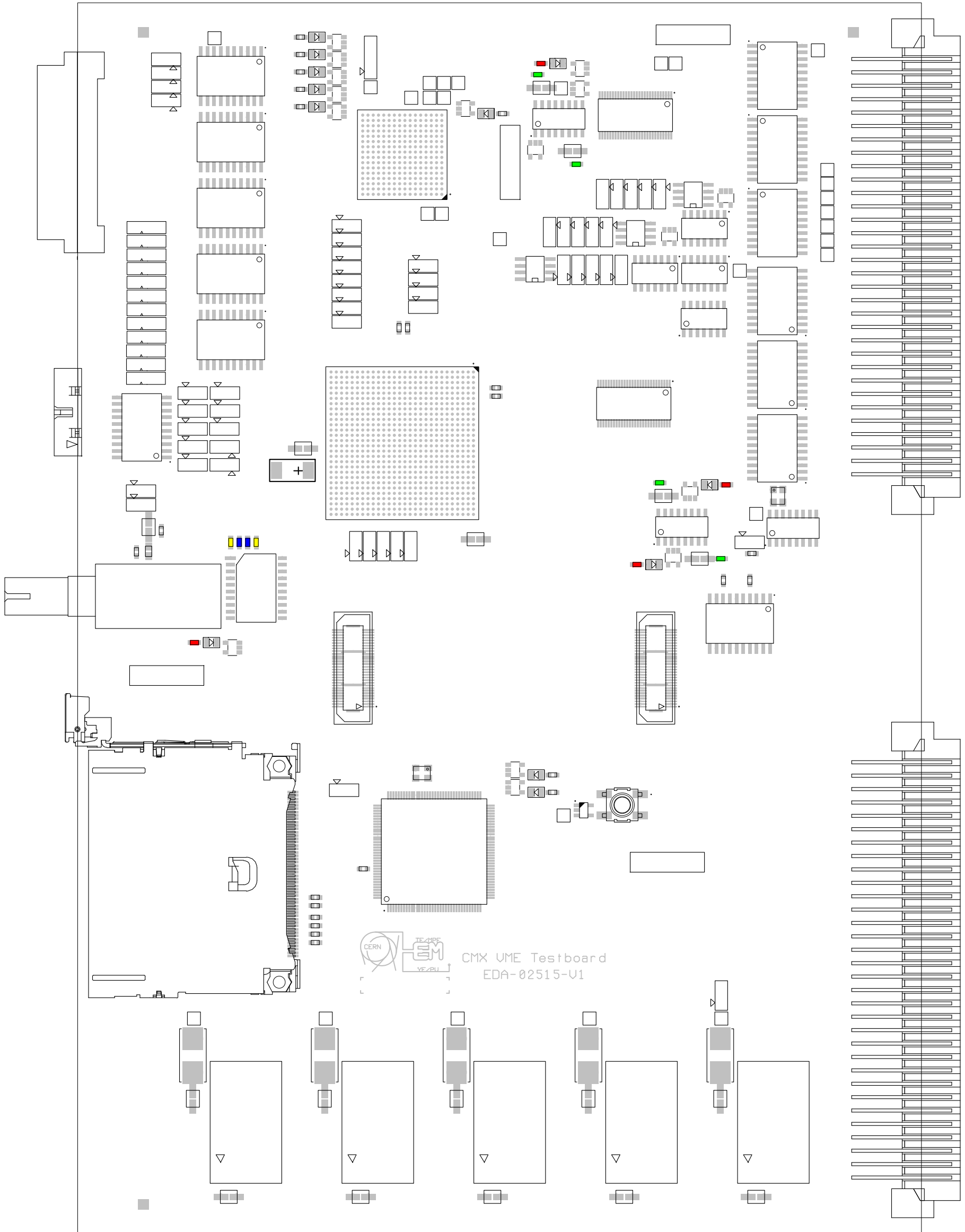


Ref.	Des.	Qty	Val	Tol.	Val2	Ref. Supplier	Outline
■	C2-C3	2	100nF	10%	16V	CC0603_100NF_16V_10%_X7R	0603
■	R1-R6, R26-R27	8	220	1%	0.1W	R0603_220R_1%_0.1W_100PPM	0603
■	R7, R9-R10, R18	4	4.7k	1%	0.1W	R0603_4K7_1%_0.1W_100PPM	0603
■	R8	1	330	0.1%	0.063W	R0603_330R_0.1%_0.063W_25PPM	0603

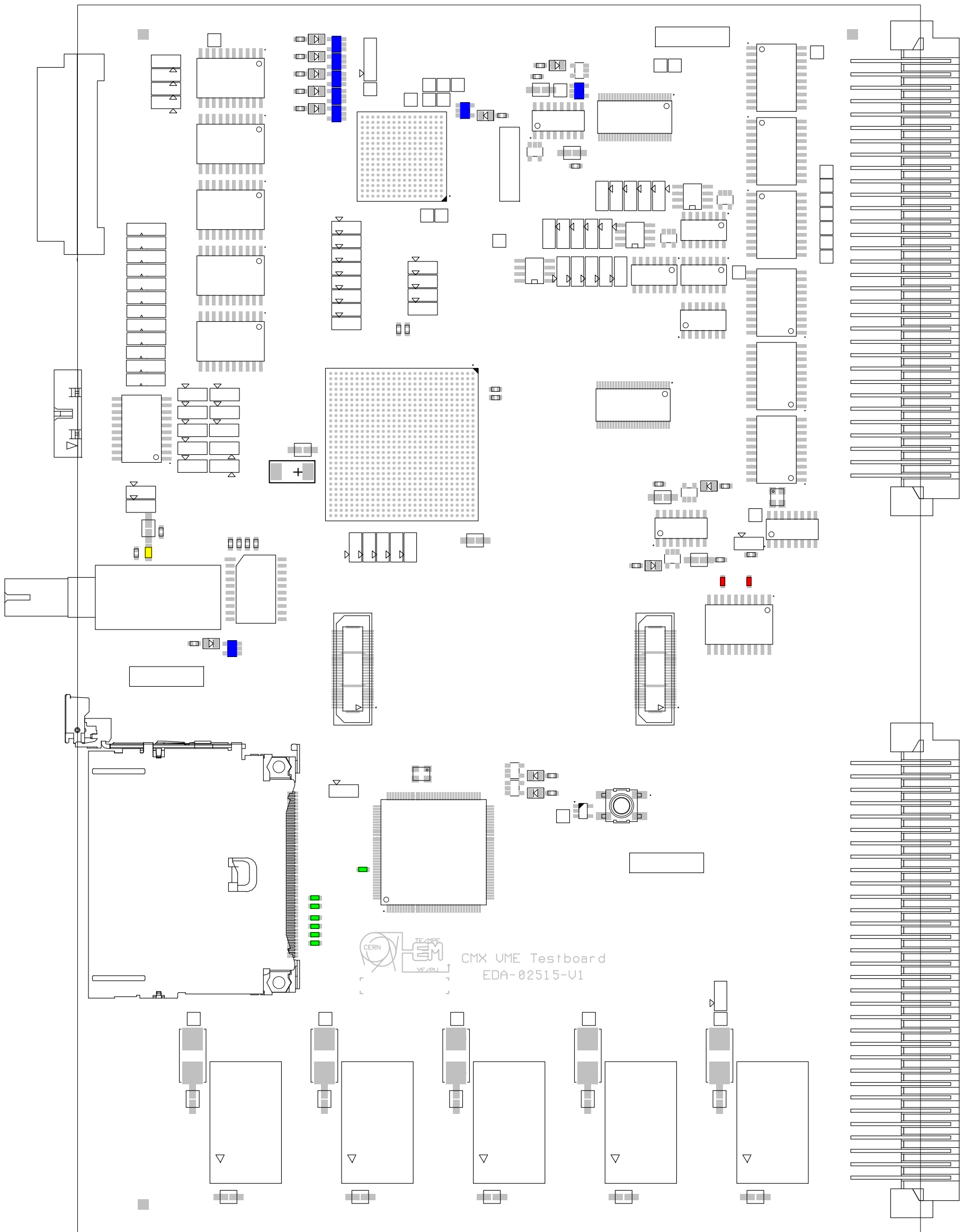


Ref.	Des.	Qty	Val	Tol.	Val2	Ref. Supplier	Outline
	R11, R15-R16, R23	4	300	1%	0.1W	R0603_300R_1%_0.1W_100PPM	0603
	R12-R14, R17	4	220k	1%	0.1W	R0603_220K_1%_0.1W_100PPM	0603
	R19, R22	2	82	1%	0.1W	R0603_82R_1%_0.1W_100PPM	0603
	R20-R21	2	130	1%	0.1W	R0603_130R_1%_0.1W_100PPM	0603

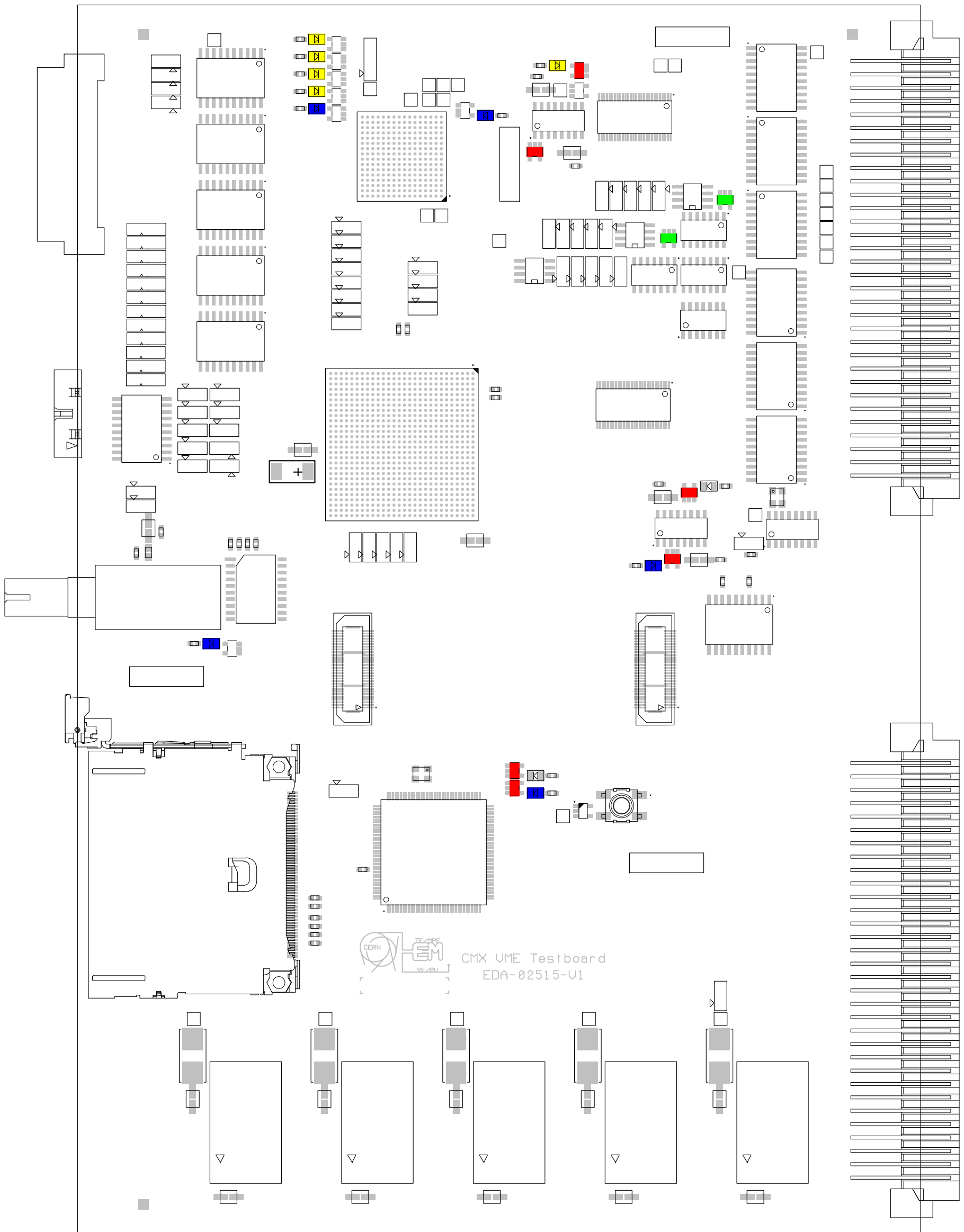


CERN TEAM EM VE/BU
 CMX UME Testboard
 EDA-02515-V1

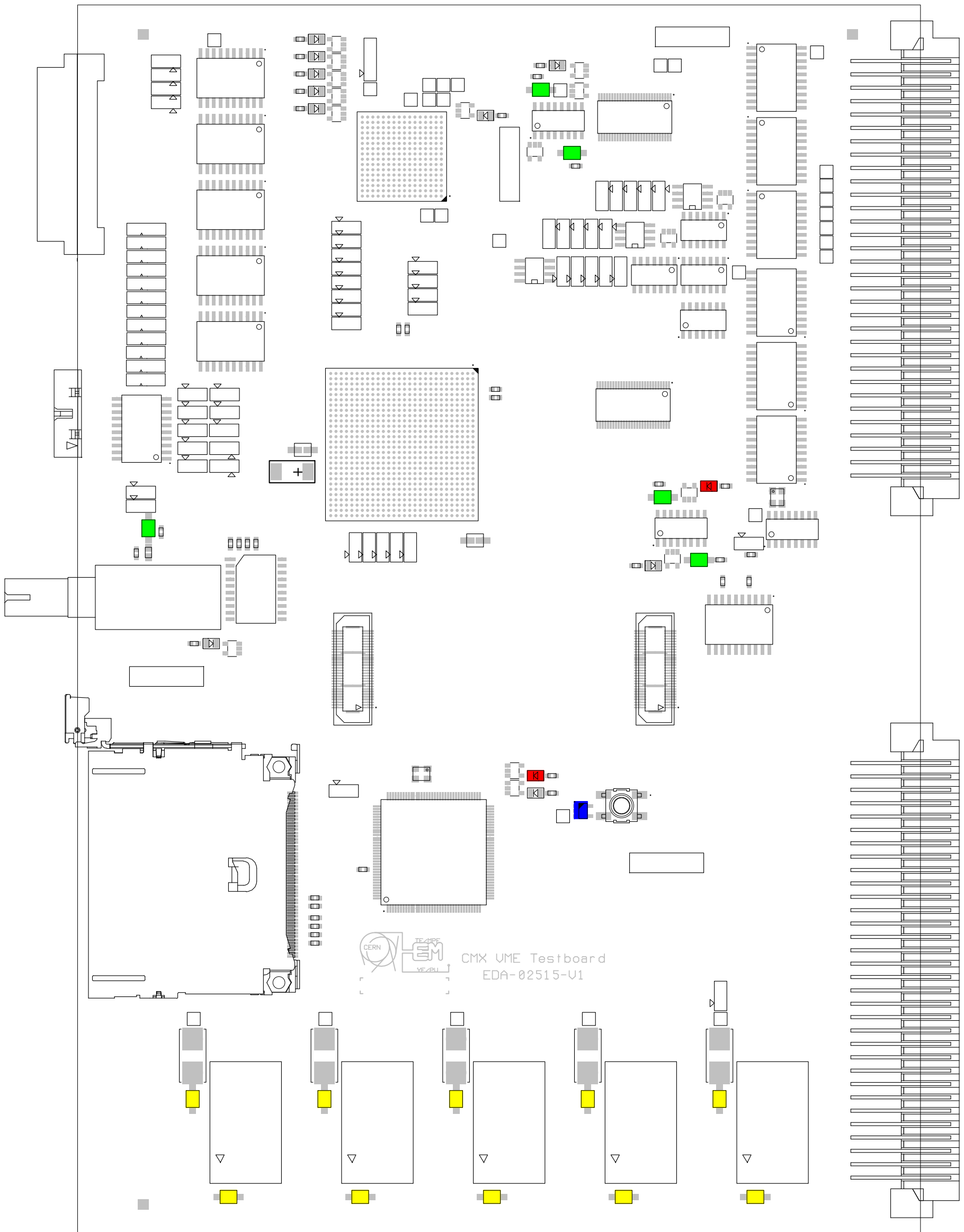
Ref.	Des.	Qty	Val	Tol.	Val2	Ref. Supplier	Outline
■	R24-R25	2	00			R0603_00_JUMPER	0603
■	R28-R34	7	1k	1%	0.1W	R0603_1K_1%_0.1W_100PPM	0603
■	L1	1				BLM21PG331SN1	0805
■	IC7-IC12, IC16, IC41	8				NC7S14P5X	SOT23_5



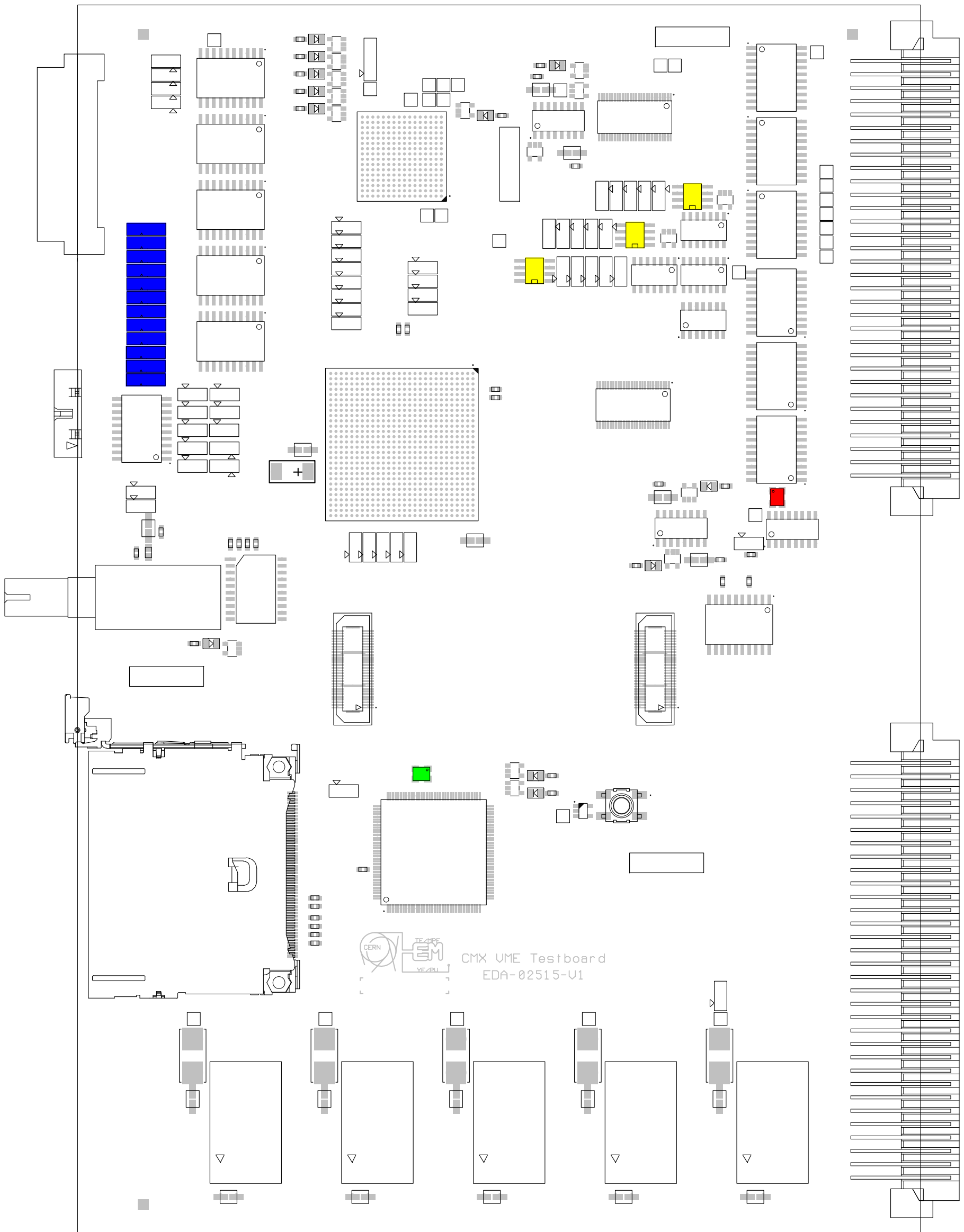
Ref.	Des.	Qty	Val	Tol.	Val2	Ref. Supplier	Outline
	IC15, IC18, IC36, IC38, IC45-IC46	6				NC7SZ00M5	SOT23_5
	IC21, IC23	2				NC7SZ00M5	SOT23_5
	LD1-LD4, LD7	5	Yellow			HSMY-C170	0805
	LD5-LD6, LD9-LD10, LD12	5	Green			HSMG-C170	0805



Ref.	Des.	Qty	Val	Tol.	Val2	Ref. Supplier	Outline
LD8, LD11		2	HER			HSMS-C170	0805
C1, C7-C10		5	10uF	10%	25V	CC1210_10UF_25V_10%_X7R	1210
C11-C20		10	100uF	20%	10V	CC1210_100UF_10V_20%_X5R	1210
IC47		1				TPS3825-33DBUT	SOT23-5

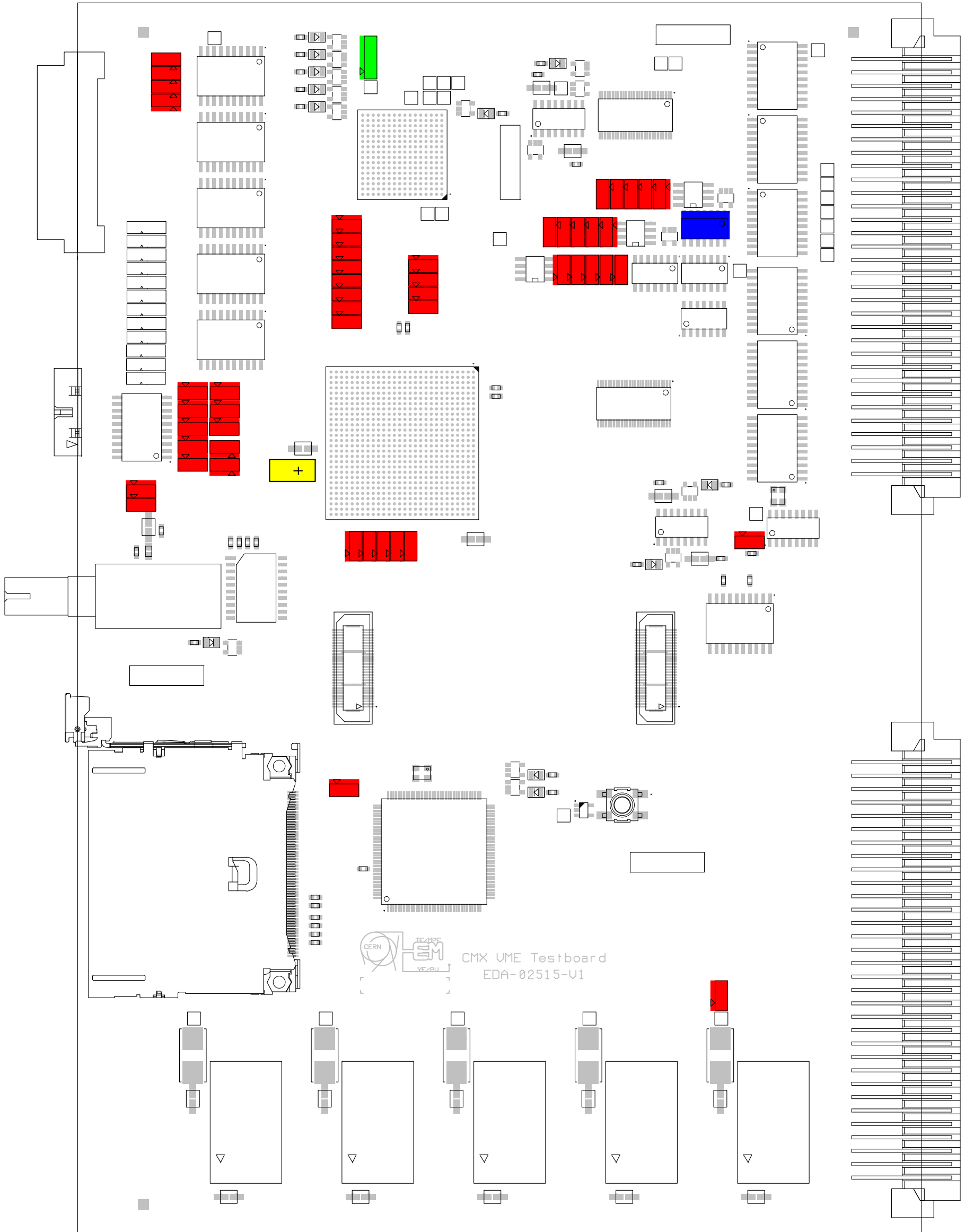


Ref.	Des.	Qty	Val	Tol.	Val2	Ref. Supplier	Outline
QZ1		1	40.0MHz			SG-310 SCFC40.0MHZ	
QZ2		1	20.0MHz			SG-310 SCFC20.0MHZ	
IC20, IC22, IC25		3				DS110LZ-25+	SOIC8
ST5-ST16		12				38603581 08440	

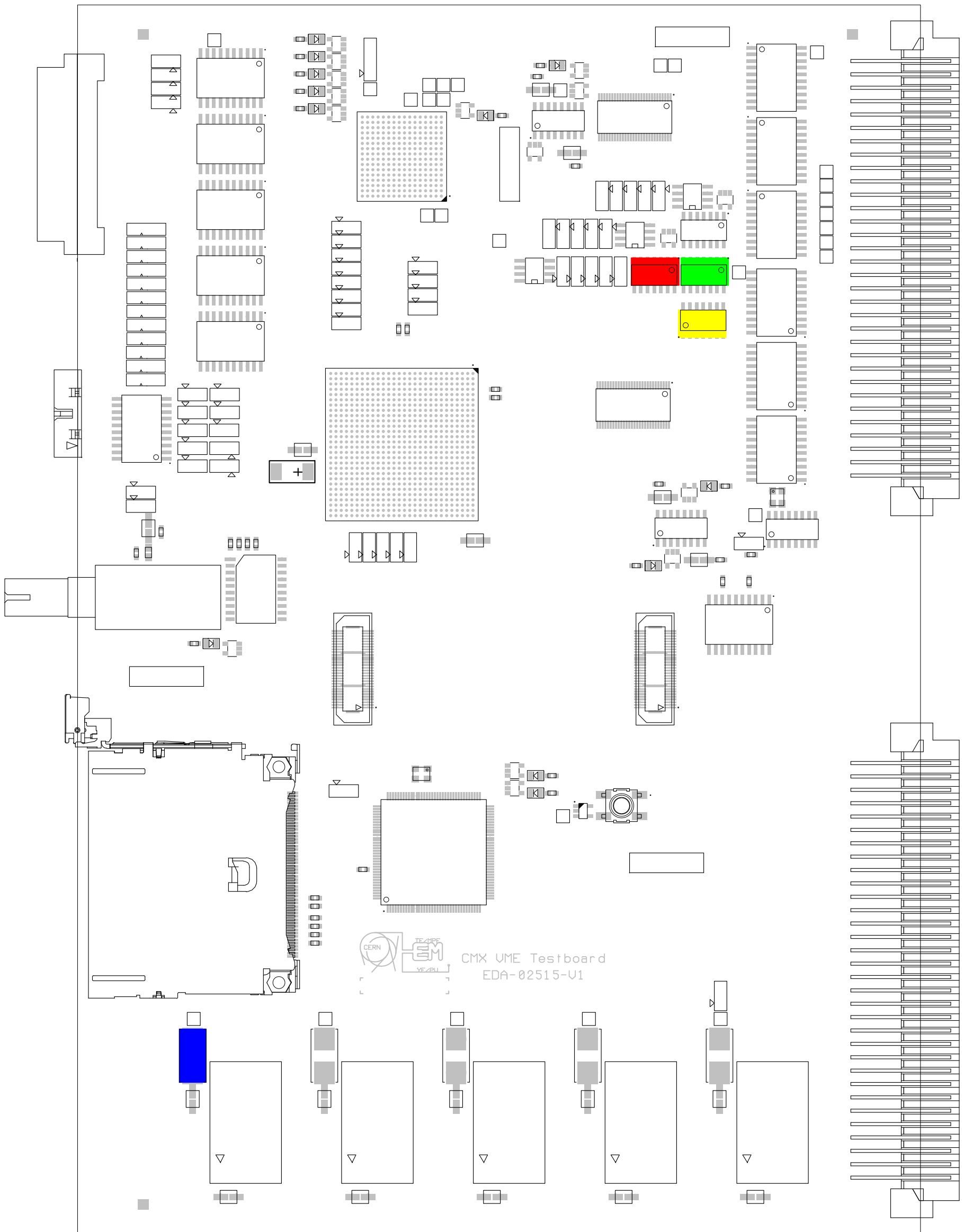


CERN EM
CMX UME Testboard
EDA-02515-V1

Ref.	Des.	Qty	Val	Tol.	Val2	Ref. Supplier	Outline
	ST1-ST4, ST17-ST28, ST31-ST47, ST50-ST66, ST68	51				38603581 08440	
	ST30	1				38603581 08440	
	C5	1	330uF			T520D337M2R5ASE015	D
	IC24	1				74HC38D	SOIC14

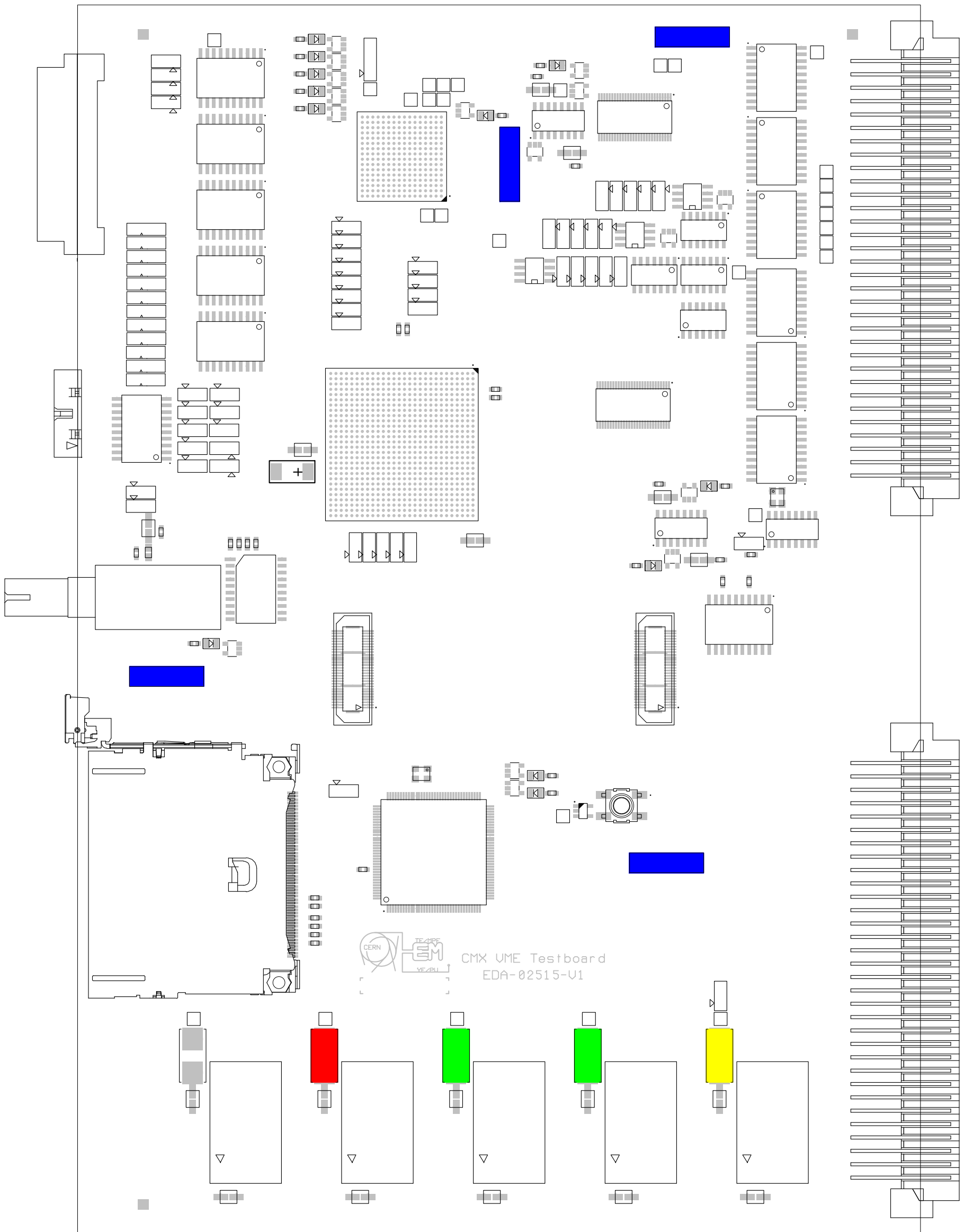


Ref.	Des.	Qty	Val	Tol.	Val2	Ref. Supplier	Outline
IC26		1				74ABT74D	SOIC14
IC27		1				SN74LS04D	SOIC14
IC28		1				CD74HC30M	SOIC14
FH1		1				154.003	

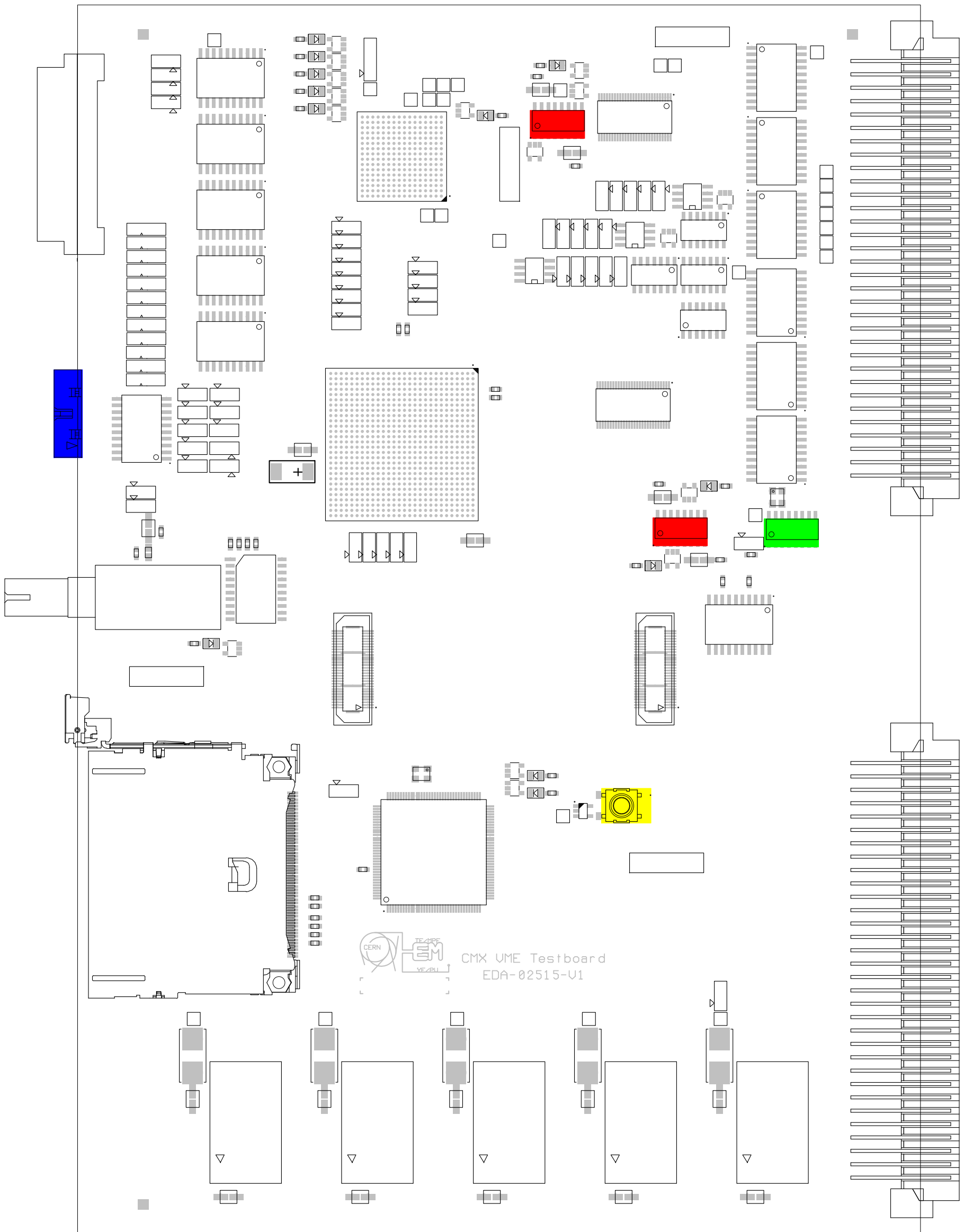


CERN TE/MP/EM
CMX UME Testboard
EDA-02515-V1

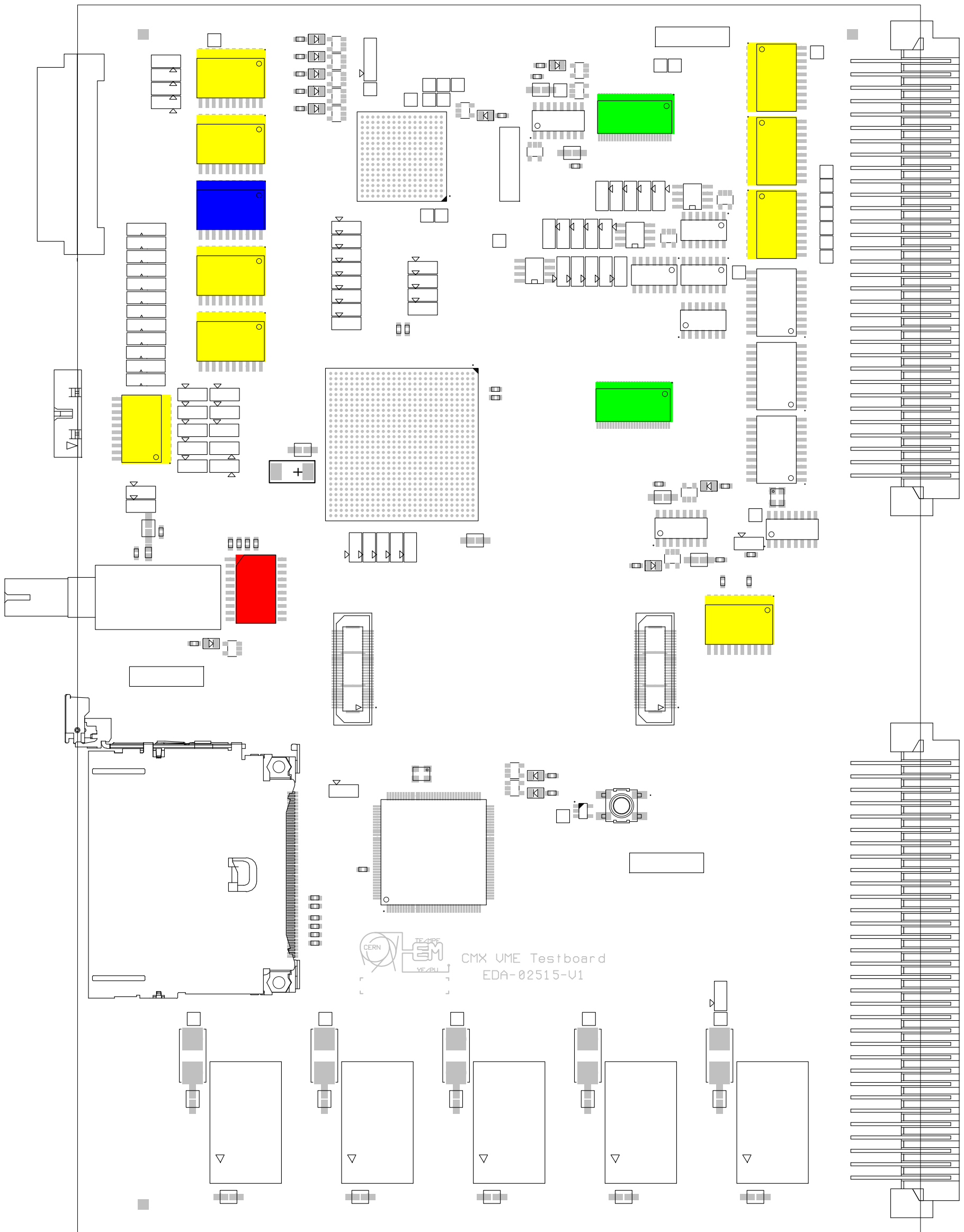
Ref.	Des.	Qty	Val	Tol.	Val2	Ref. Supplier	Outline
■	FH2	1				154.001	
■	FH3-FH4	2				154.005	
■	FH5	1				154.002	
■	ST29, ST48-ST49, ST67	4				07.88.24.516.1	



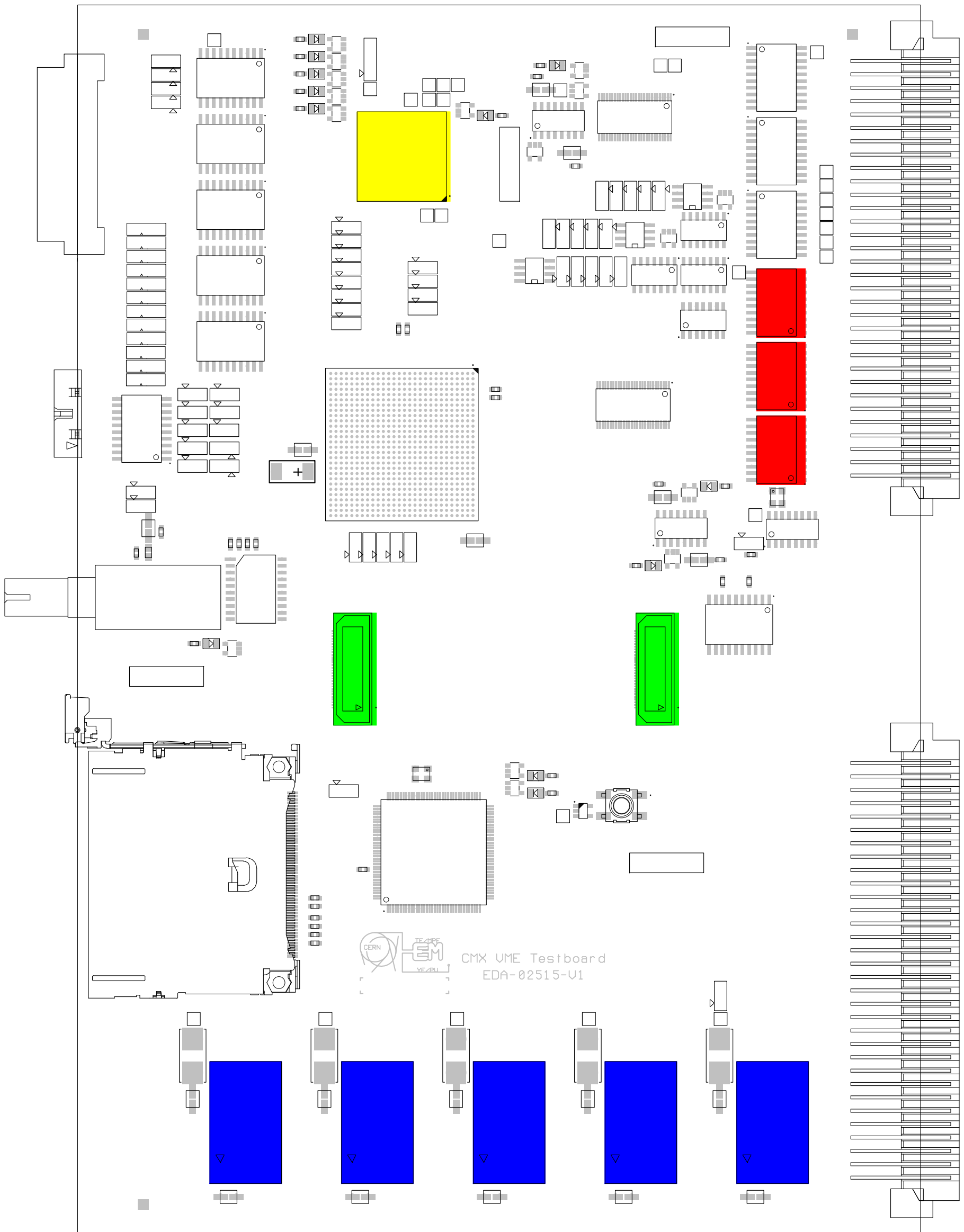
Ref.	Des.	Qty	Val	Tol.	Val2	Ref. Supplier	Outline
IC17, IC37		2				SN74LS123D	SOIC16
IC39		1				74LCX157	SOIC16
SW1		1				B3SN-3012G	
J2		1				87833-1420	



Ref.	Des.	Qty	Val	Tol.	Val2	Ref. Supplier	Outline
IC42		1				MC100LVEL92DWG	SOIC20
IC19, IC29		2				SN74CB3T16211DGG	TSSOP56
IC1-IC3, IC5-IC6, IC30-IC32, IC43		9				74LVT245WM	SOIC20
IC4		1				74LVT244WM	SOIC20



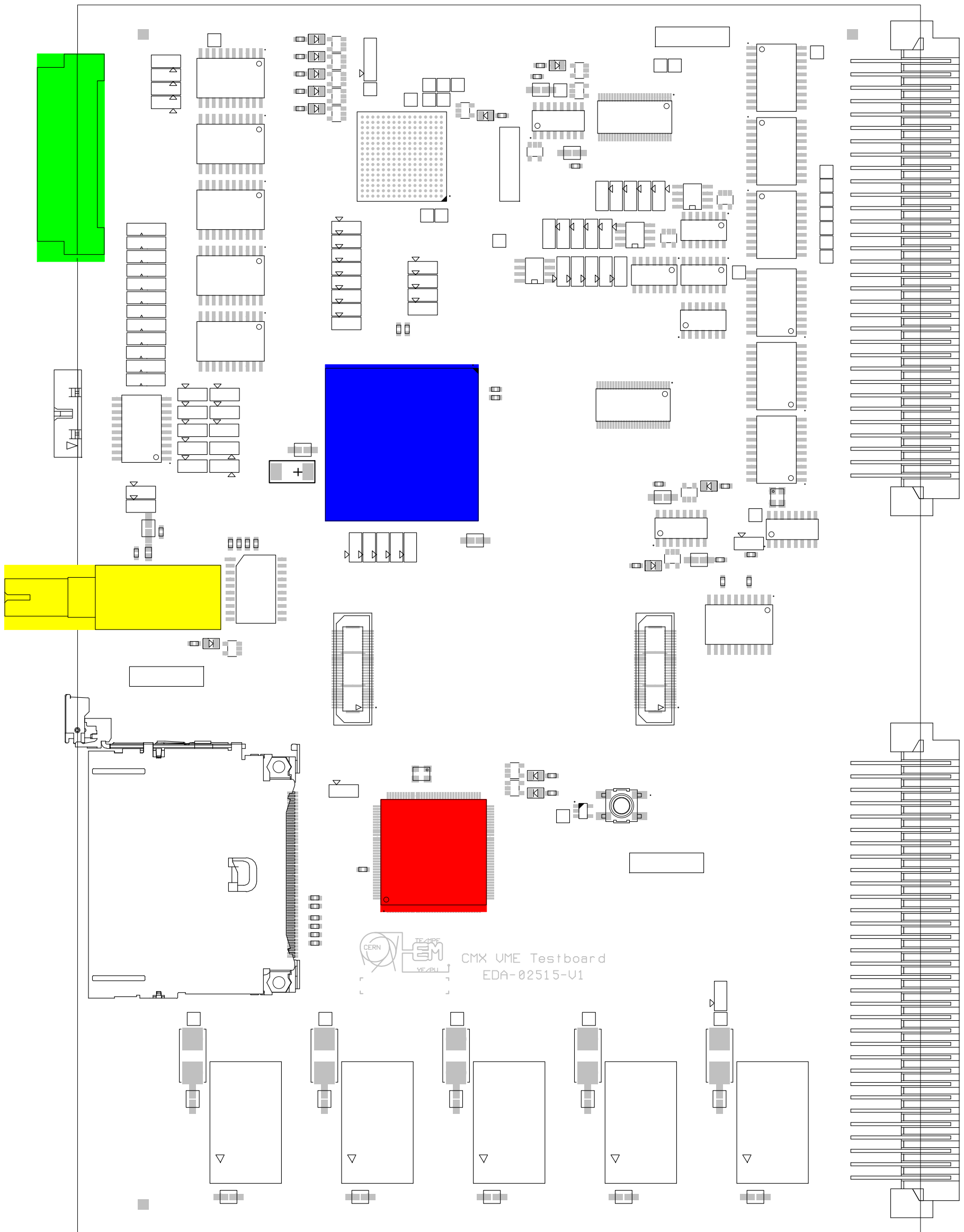
Ref.	Des.	Qty	Val	Tol.	Val2	Ref. Supplier	Outline
IC33-IC35		3				MM74HC574WM	SOIC
J3-J4		2				QSH-030-01-X-D-A	
IC13		1				XC3S200A-FTG256	BGA
IC48-IC52		5				PTH05050WAH	





 CMX UME Testboard
 EDA-02515-V1

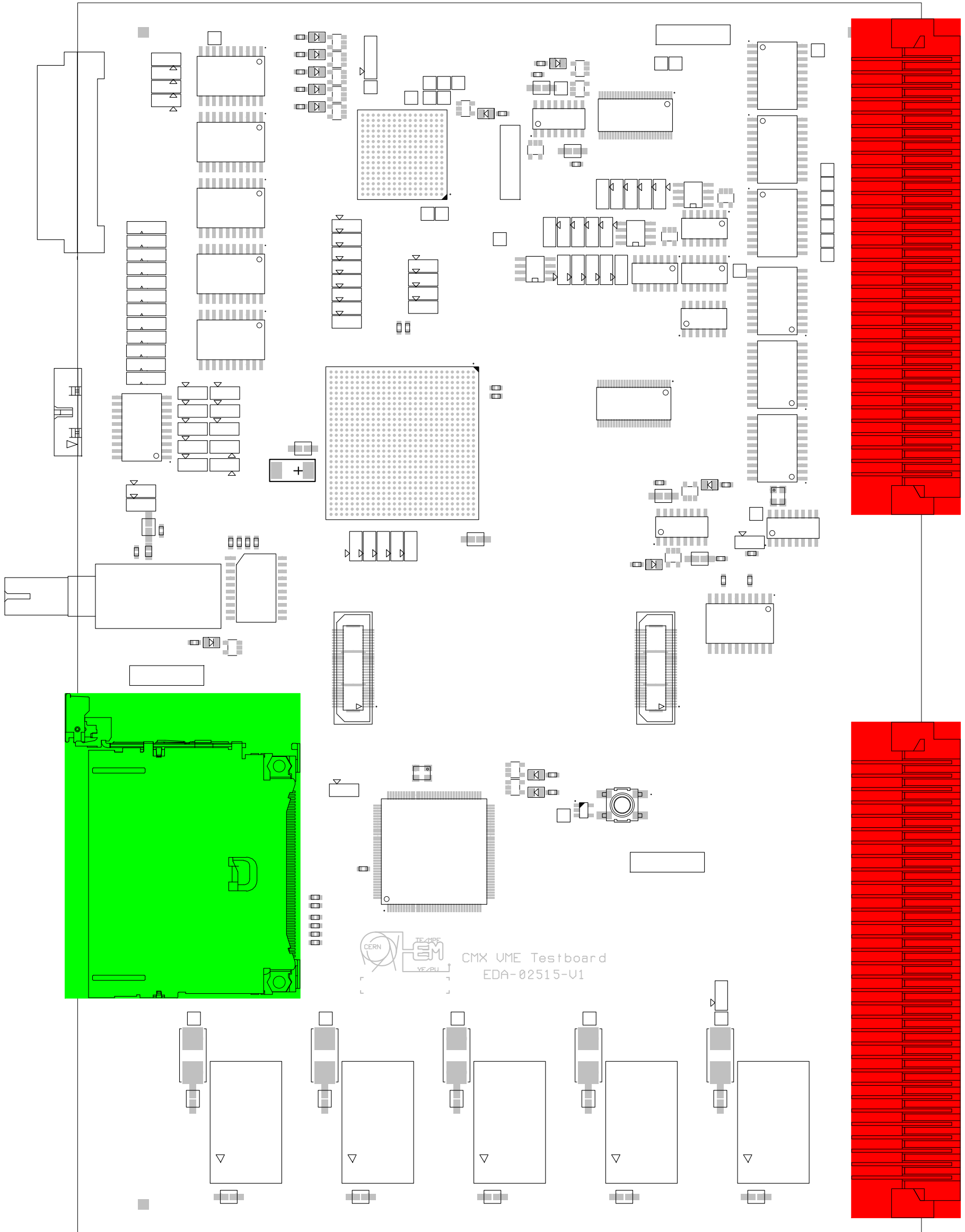
Ref.	Des.	Qty	Val	Tol.	Val2	Ref. Supplier	Outline
IC44		1				XCCACE-TQG144	TQFP144
J1		1				424189	
IC40		1				HFBR-2119TZ	
IC14		1				XC6VLX240T-1FFG784C	BGA





 CMX UME Testboard
 EDA-02515-V1

Ref. Des.	Qty	Val	Tol.	Val2	Ref. Supplier	Outline
P1-P2	2				02 01 160 2101	
SKT1	1				55358-5029 + 55356-0011	





 CMX VME Testboard
 EDA-02515-V1