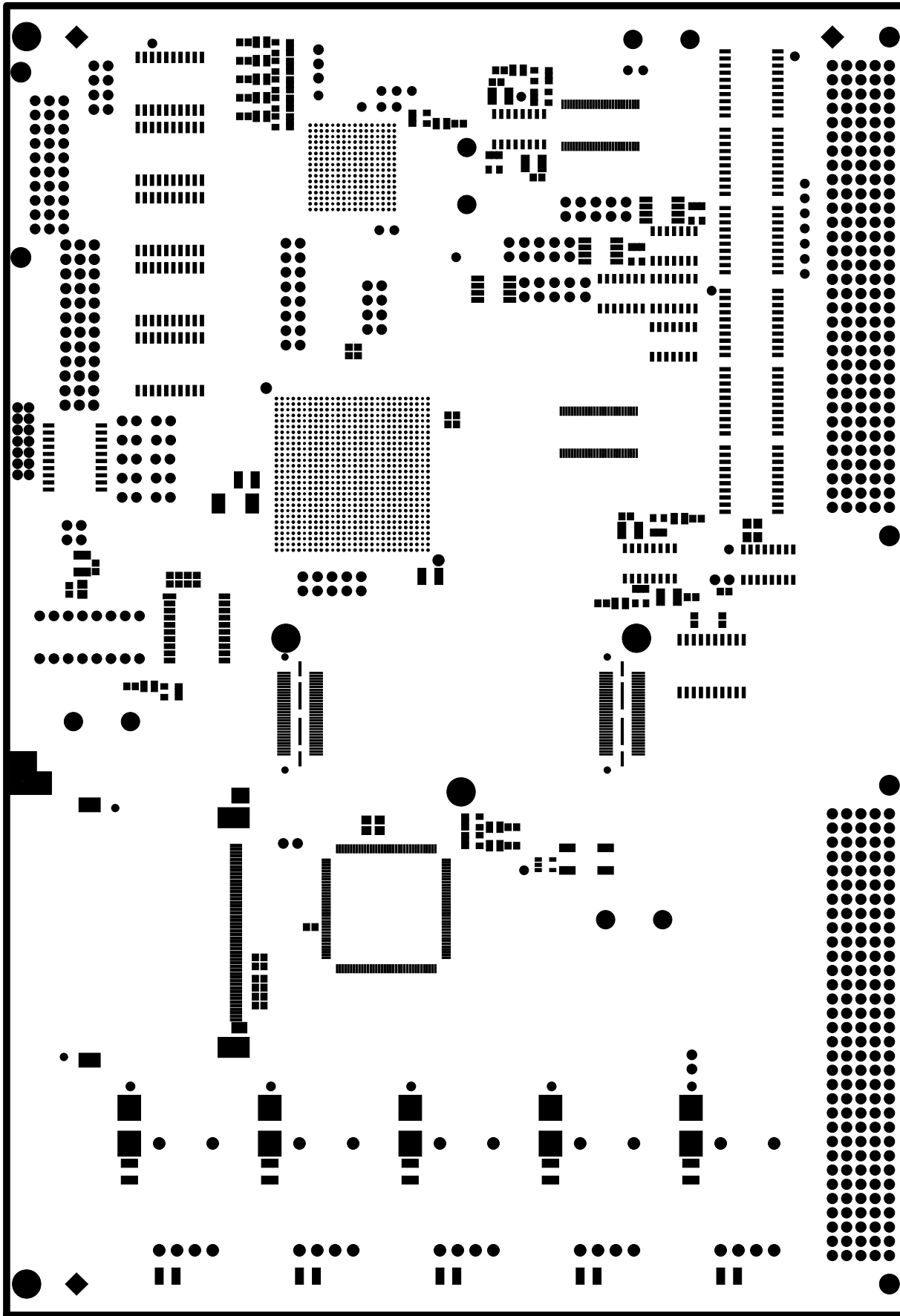
 TE/MPE	P. VULLIEZ	
	DESS	P. VULLIEZ
	DATE	23/05/2012

TOP SILKSCREEN

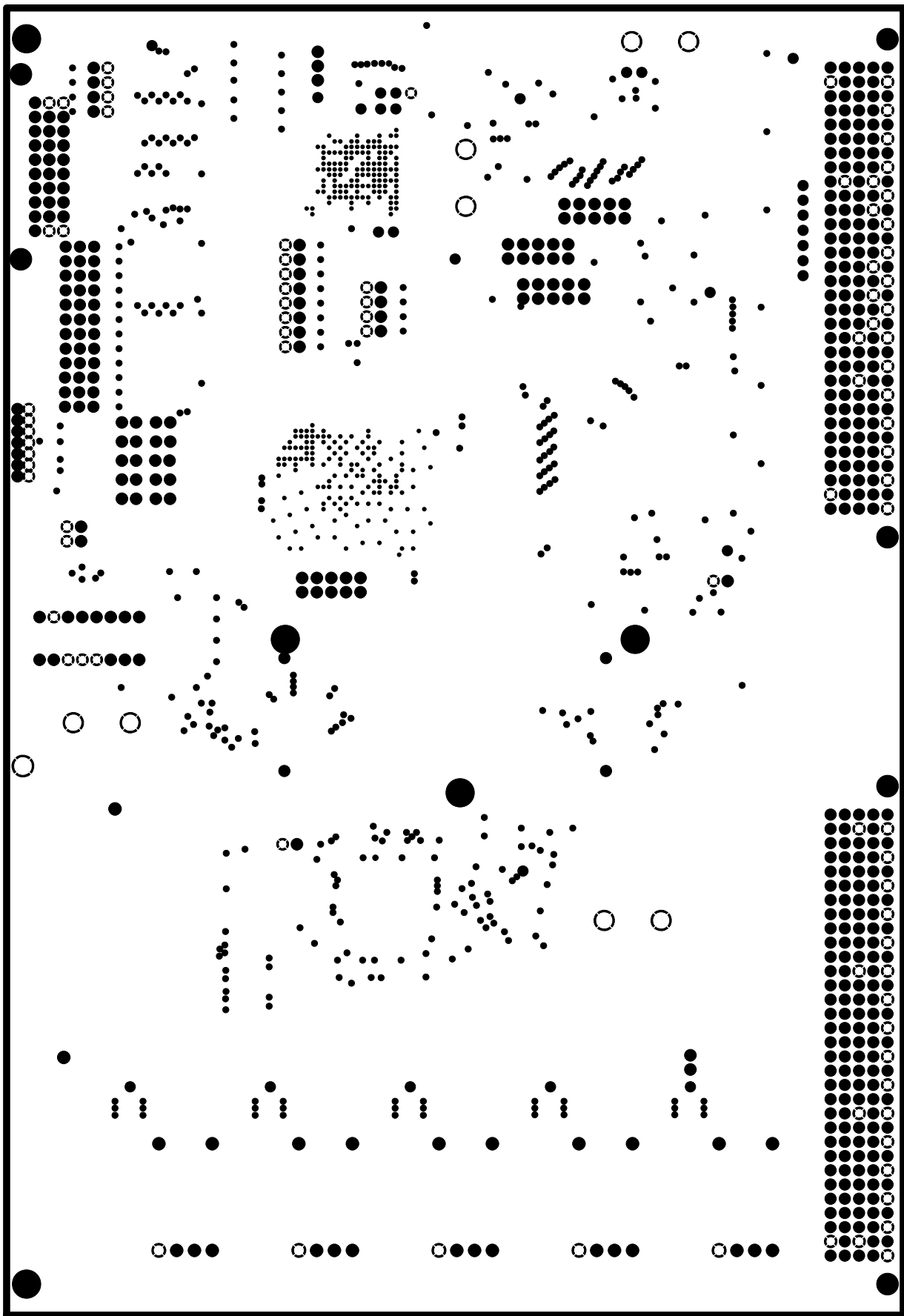


TE/MPE

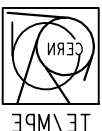
P. VULLIEZ	
DESS	P. VULLIEZ
DATE	23/05/2012

TOP SOLDERMASK

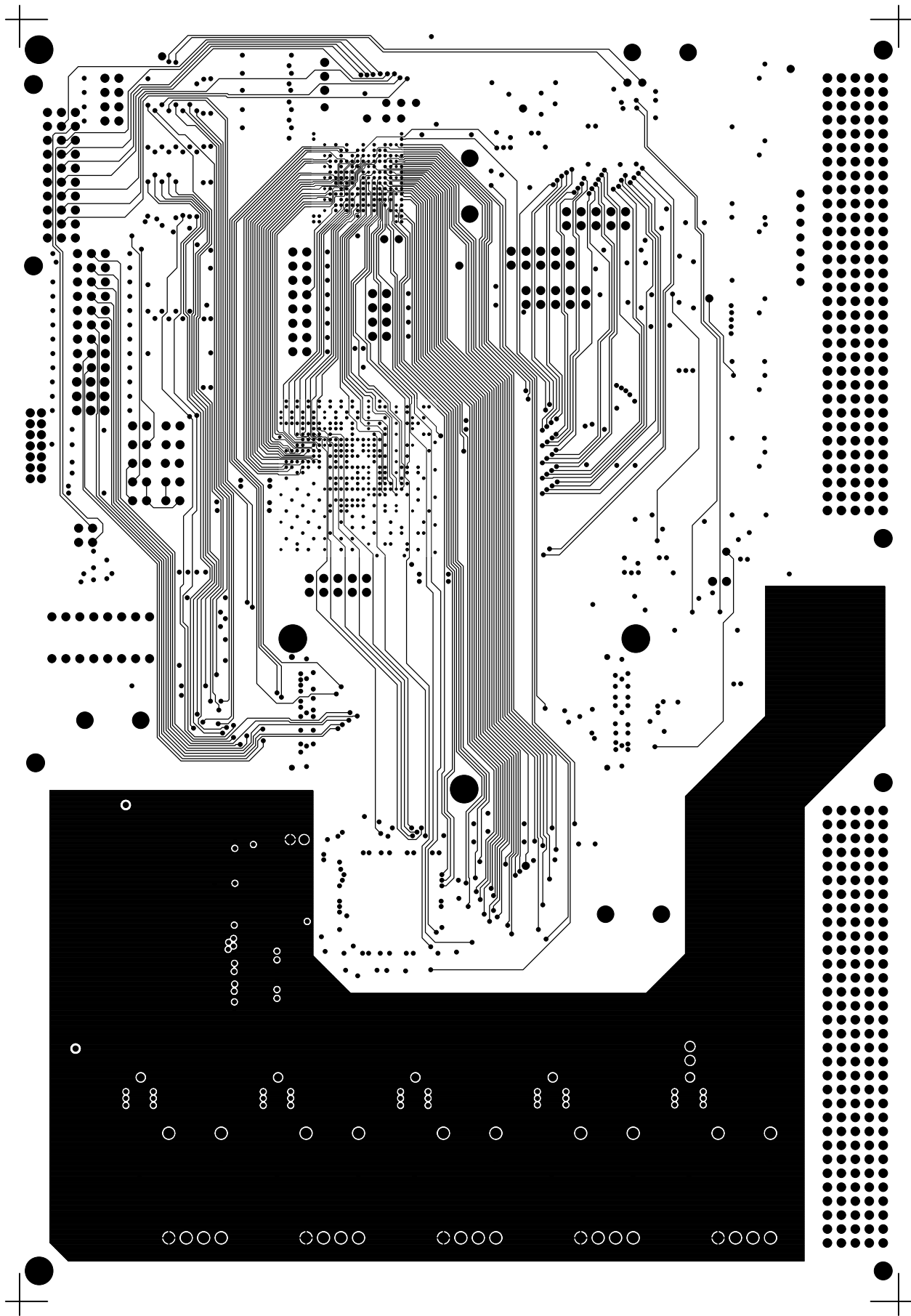




EDA-05212-V1	DESIGNER	DATE
	P. VULLIETZ	3/02/2015



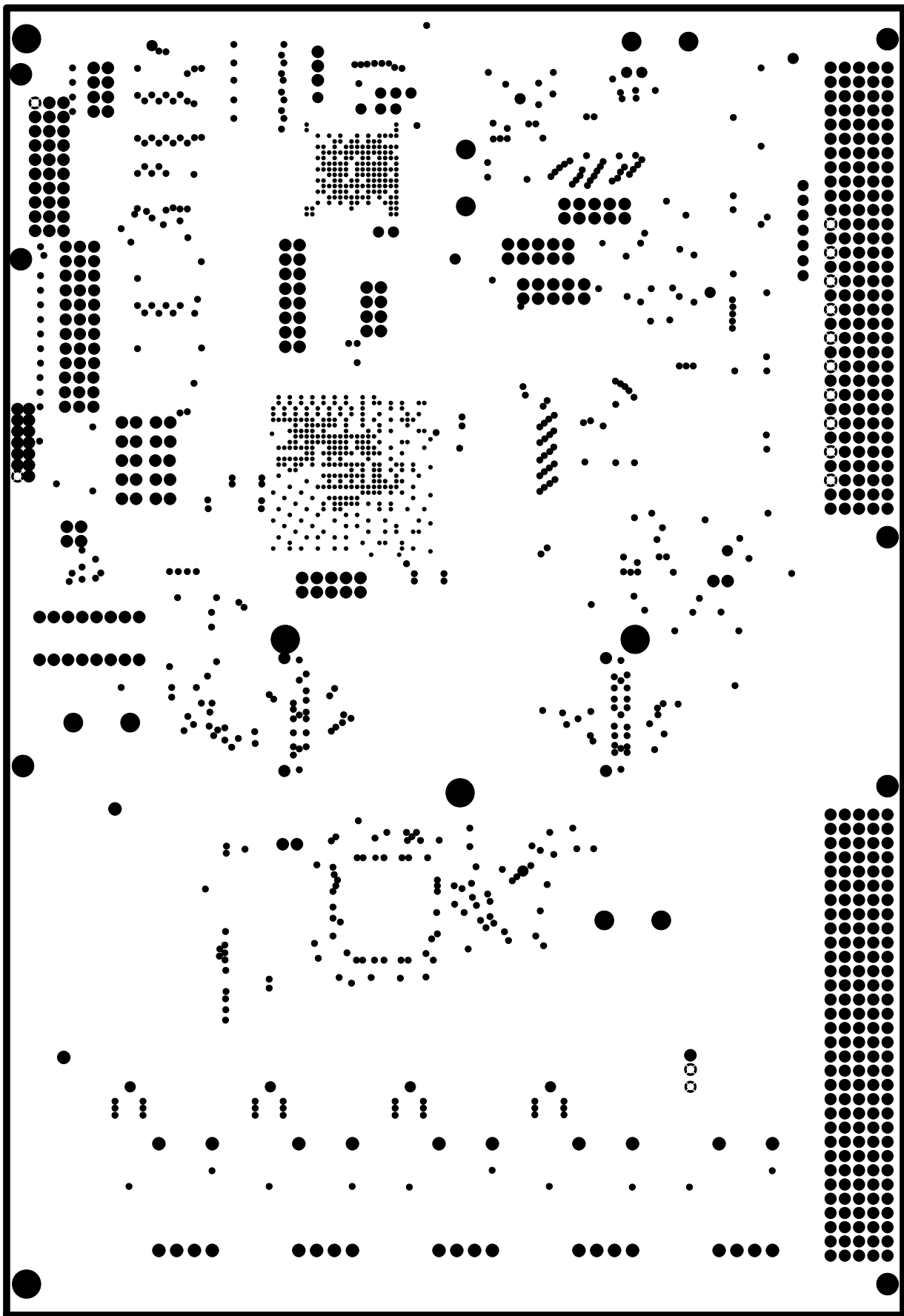
TEMPERATURE	2						
-------------	---	--	--	--	--	--	--




P. VULLIEZ	
DESS	P. VULLIEZ
DATE	23/05/2012

SIGNAL

		3							
--	--	---	--	--	--	--	--	--	--



EDA-05212-V1	DESIGNER	
DATE	DESIGNER	
33/02/2015	P. VULLIETZ	TECHNICAL

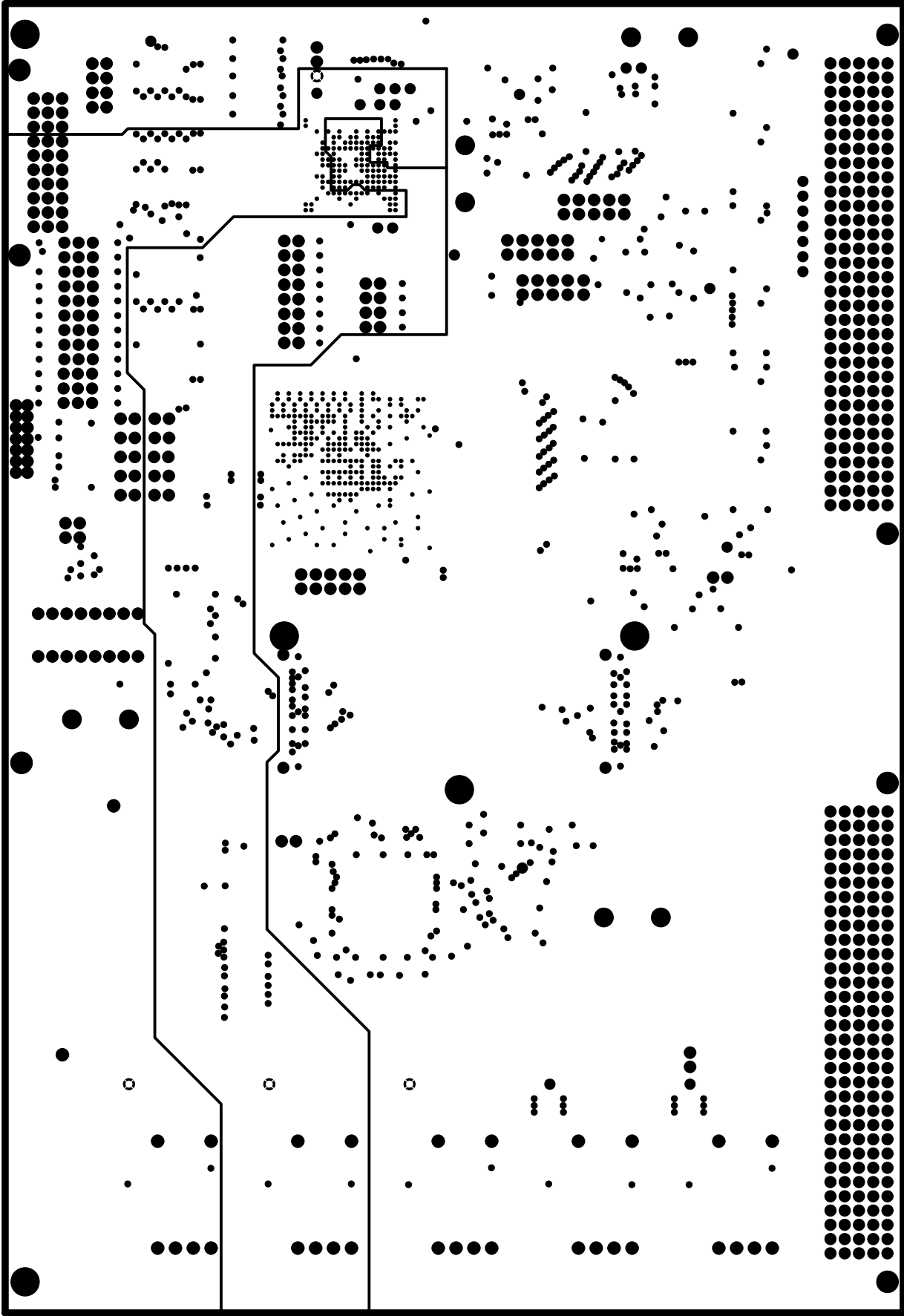
POWER PLANE	4						
-------------	---	--	--	--	--	--	--




P. VULLIEZ	
DESS	P. VULLIEZ
DATE	23/05/2012

GROUND PLANE

				5		
--	--	--	--	---	--	--

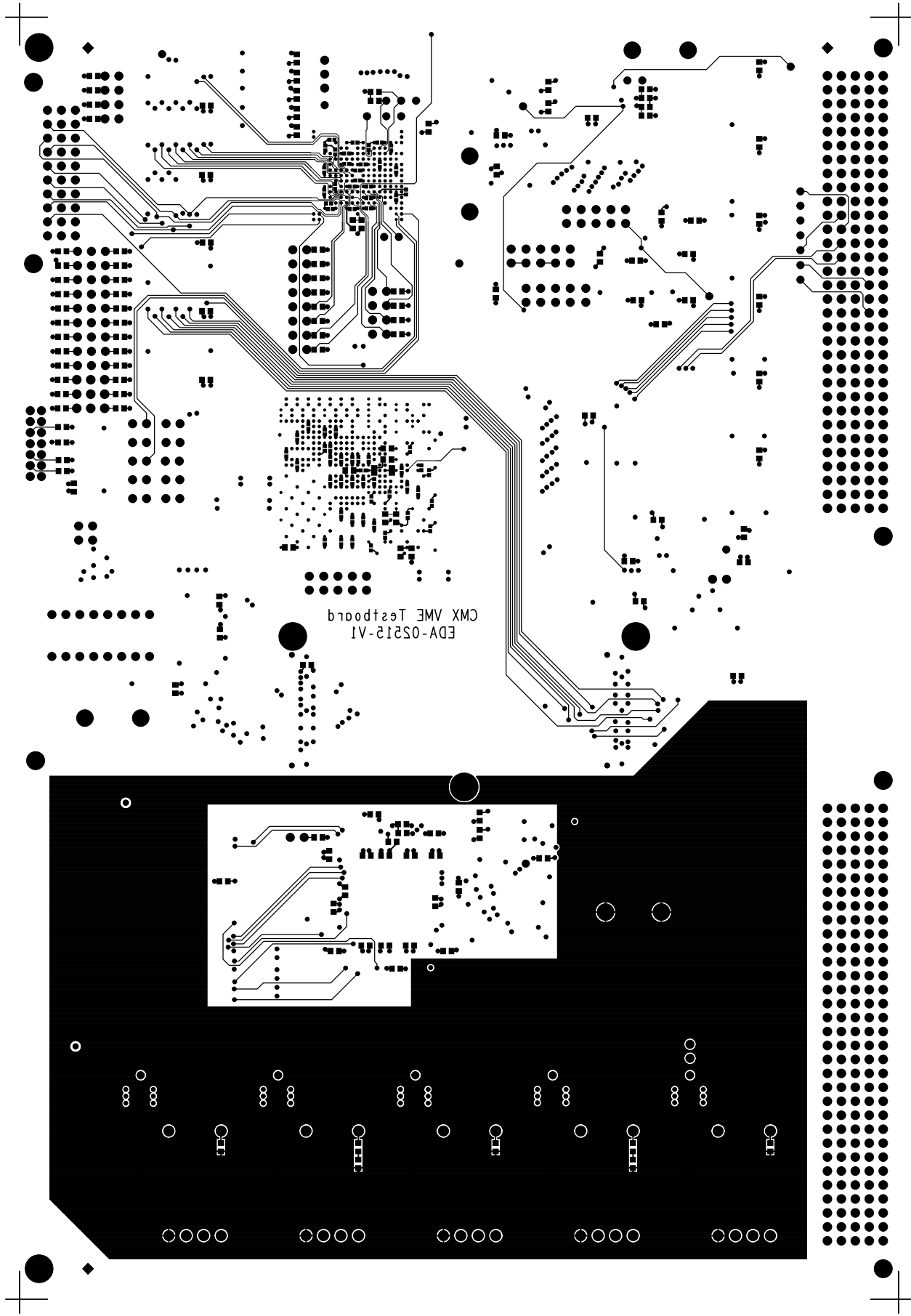


EDA-05212-V1	DESIGNER	
DATE	DESIGNER	
3/02/2015	P. VULLIETZ	TECHNICAL

POWER PLANES	9
--------------	---







EDA-05212-V1  
CMX VME Testboard

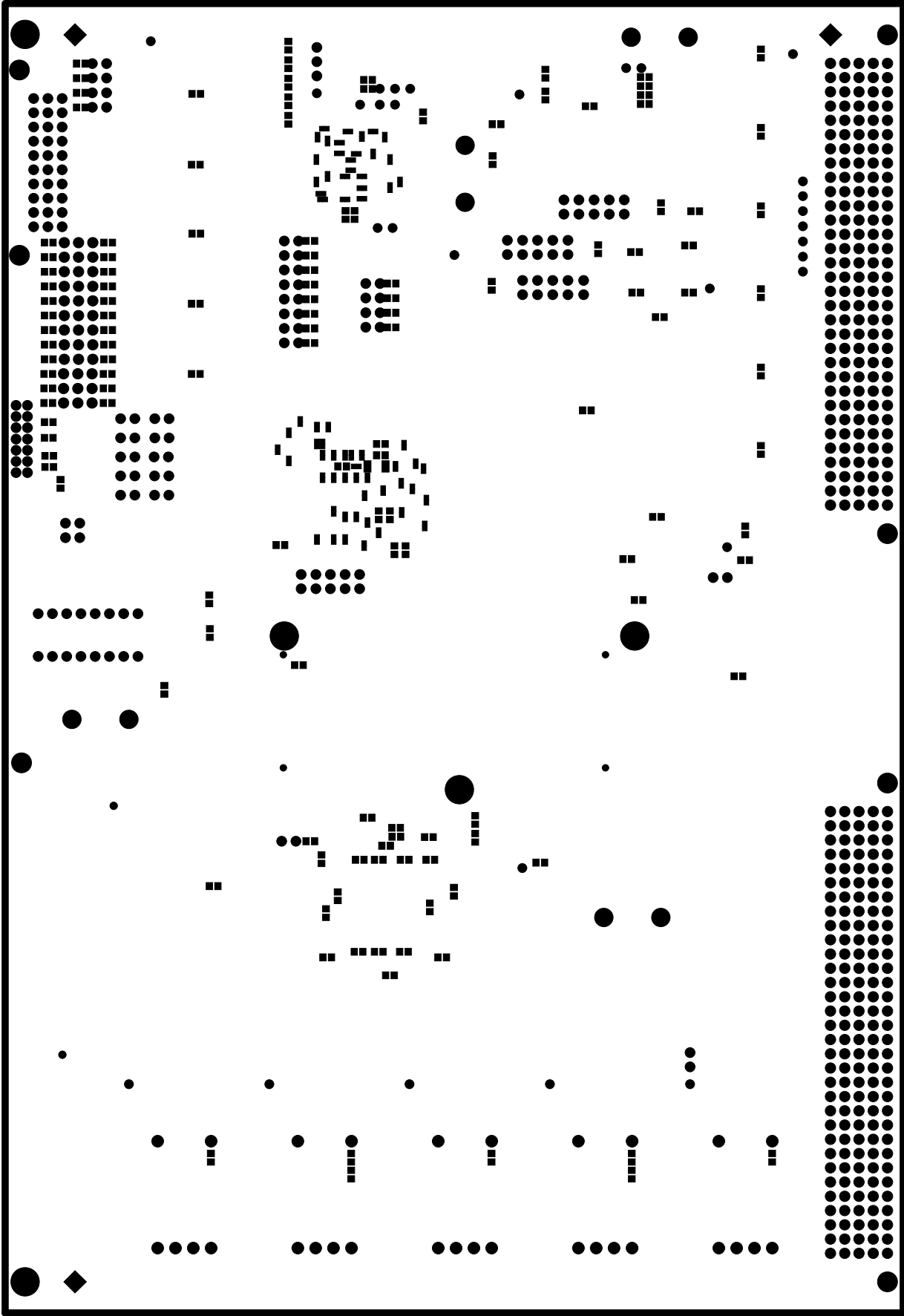
EDA-05212-V1	DESIGNER	P. VULLIETZ
DATE	3/02/2015	




8									
---	--	--	--	--	--	--	--	--	--

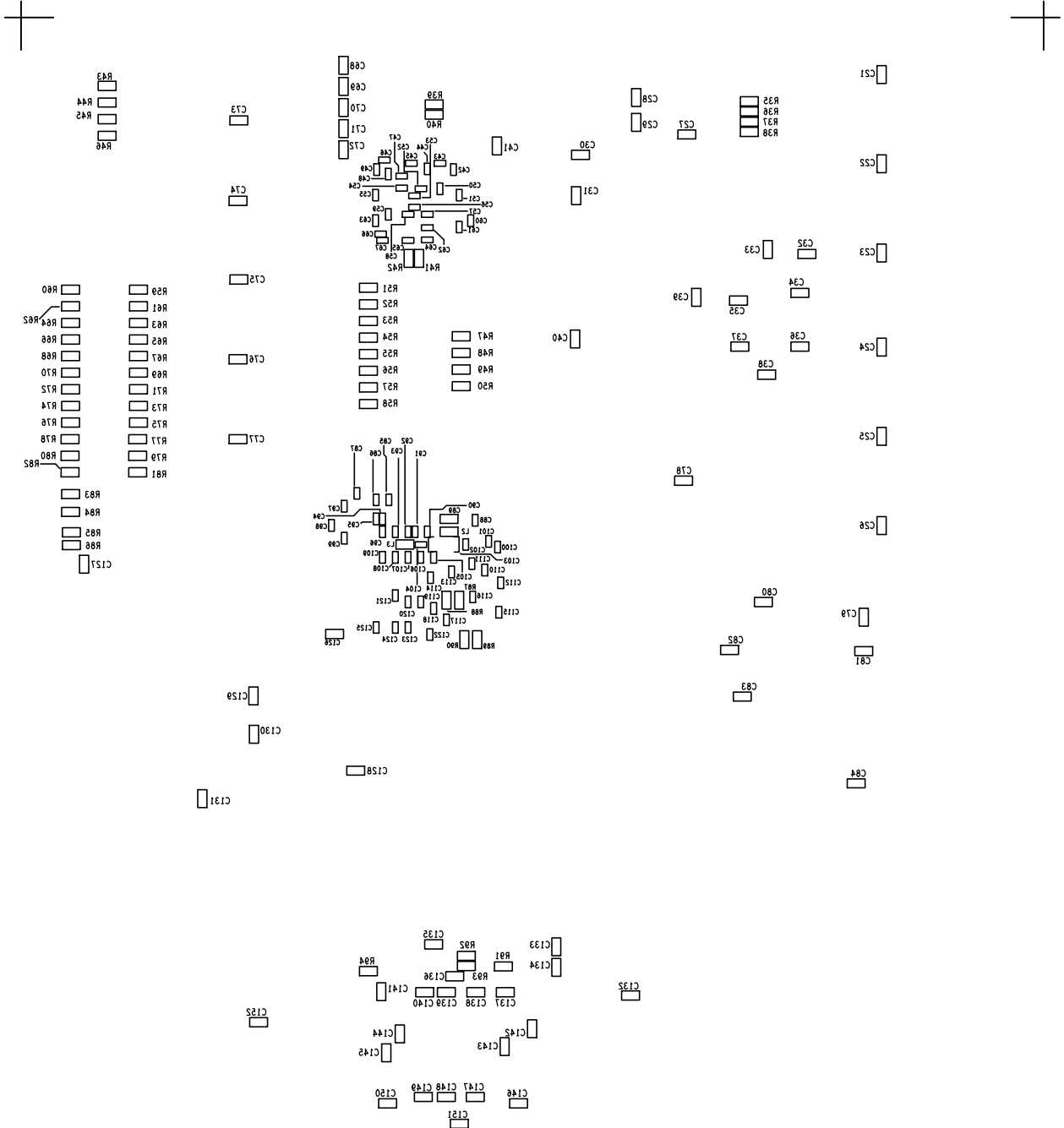
BOTTOM SIDE

TEMPERATURE



EDA-05212-V1	DESIGNER	
P. VULLIETZ	DATE	
33/02/2013	TEMPERATURE	

BOTTOM SOLDERMASK

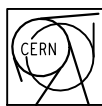
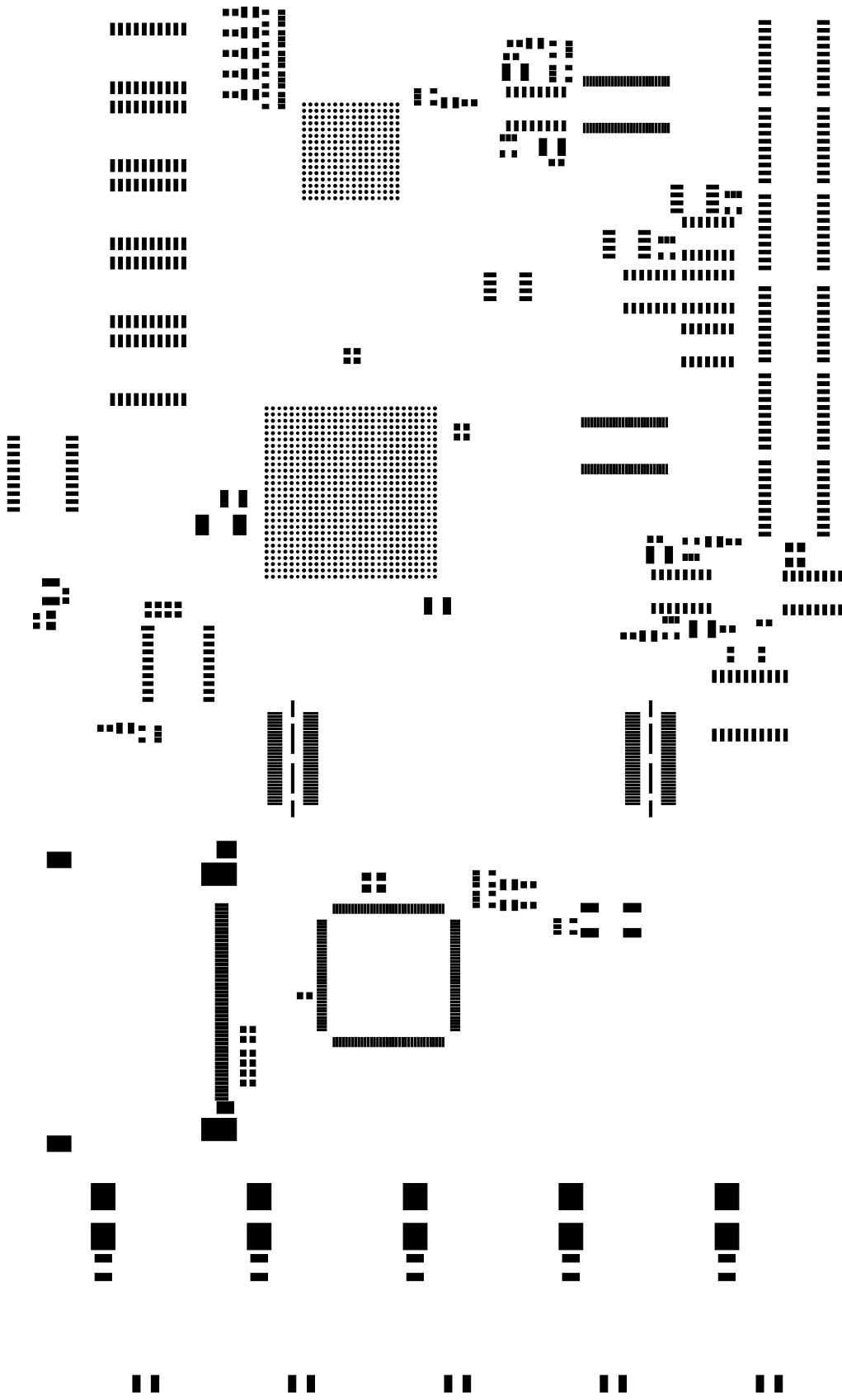


GMX VME Testboard  
EDA-05212-V1



TEMPER	DATE	33\02\5015
	DESIGN	P. VULLIERS
EDA-05212-V1		

BOTTOM SILKSCREEN




P. VULLIEZ	
DESS	P. VULLIEZ
DATE	23/05/2012

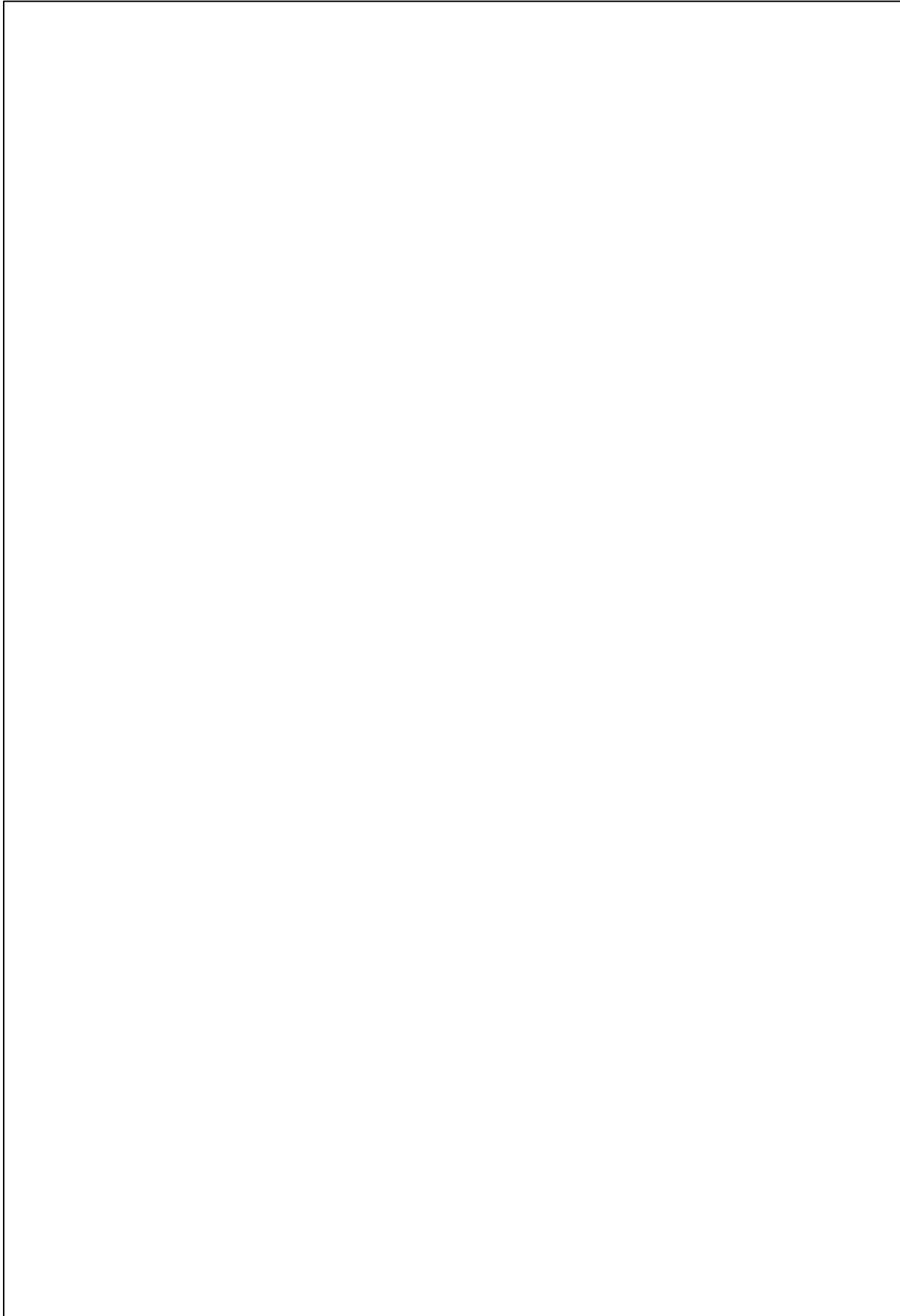
TOP PASTEMASK

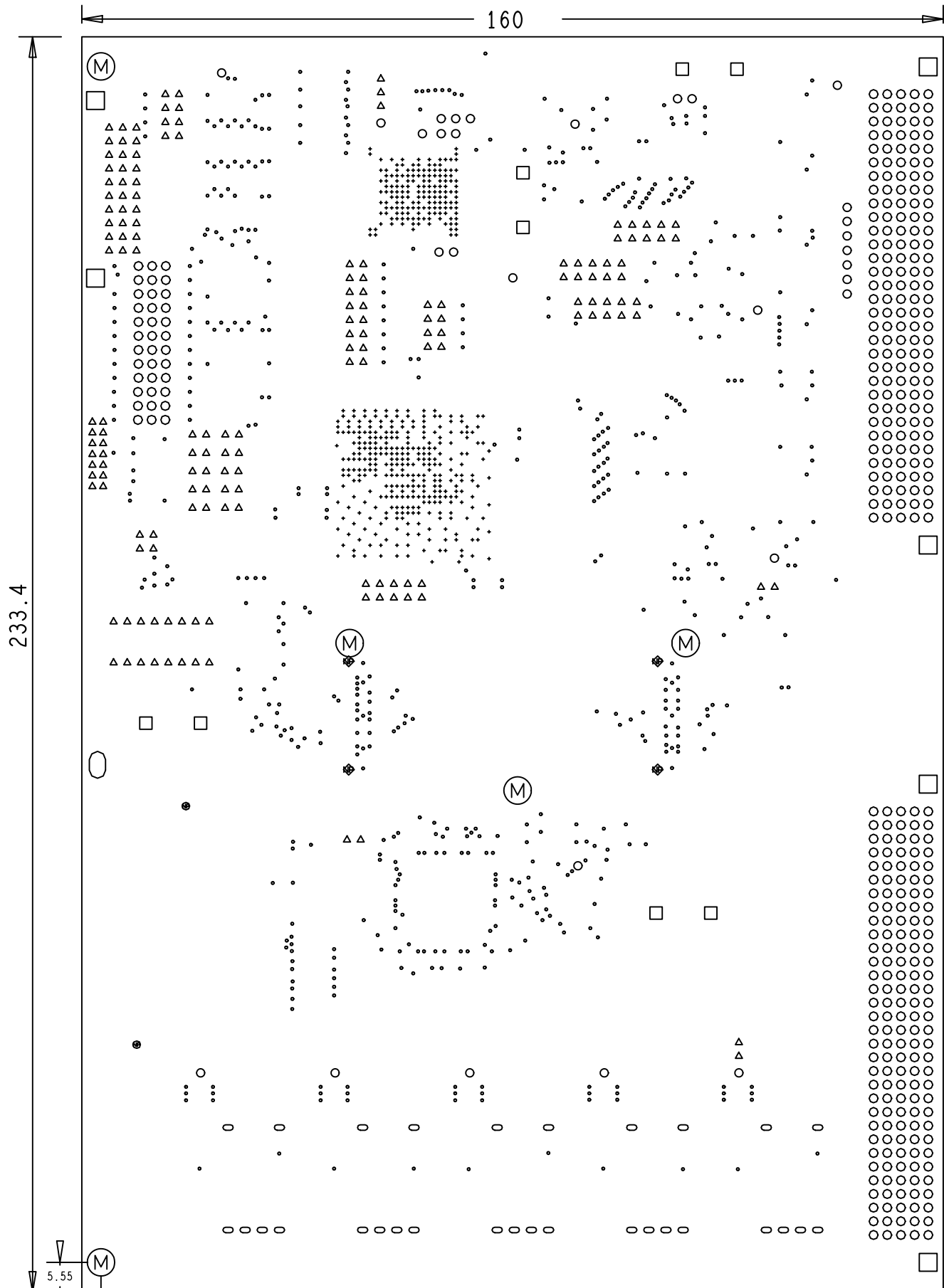
TE/MPE



EDA-05212-V1	DESIGNER	
DATE	DESIGNER	
31/07/2013	P. VUJLIEZ	

BOTTOM PARTS MARK





Metric Drill Legend TOP to BOTTOM  
Drill sizes are considered finished.  
ALL UNITS ARE IN MILLIMETERS

Figure	Dia.	TYPE	QTY
·	0.25	PLATED	470
•	0.40	PLATED	611
○	0.80	PLATED	30
△	0.90	PLATED	165
○	1.00	PLATED	356
○	1.20	PLATED	30
○	2.30	PLATED	1
□	2.40	PLATED	8
□	2.80	PLATED	6
Ⓜ	3.20	PLATED	5
◆	1.20	NON-PLATED	4
●	1.40	NON-PLATED	2

TOTAL HOLES: 1688

TE/MPE

	P. VULLIEZ	
	DESS	P. VULLIEZ
	DATE	23/05/2012