

MICHIGAN STATE
UNIVERSITY

TileFOX_F Construction

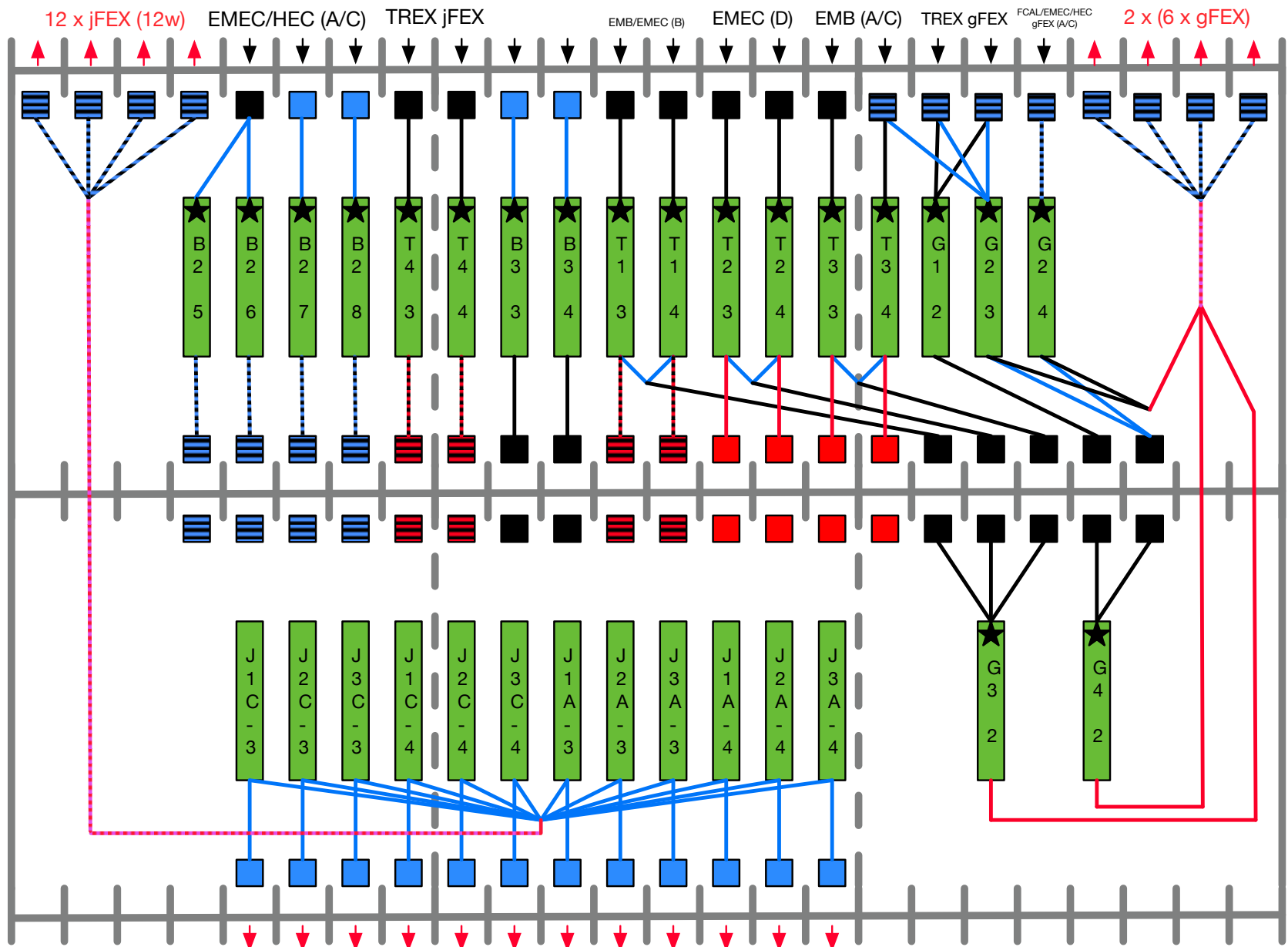
FOX

18th - 21st July 2019

Daniel Hayden
daniel.hayden@cern.ch



F



TileFOX F

Key

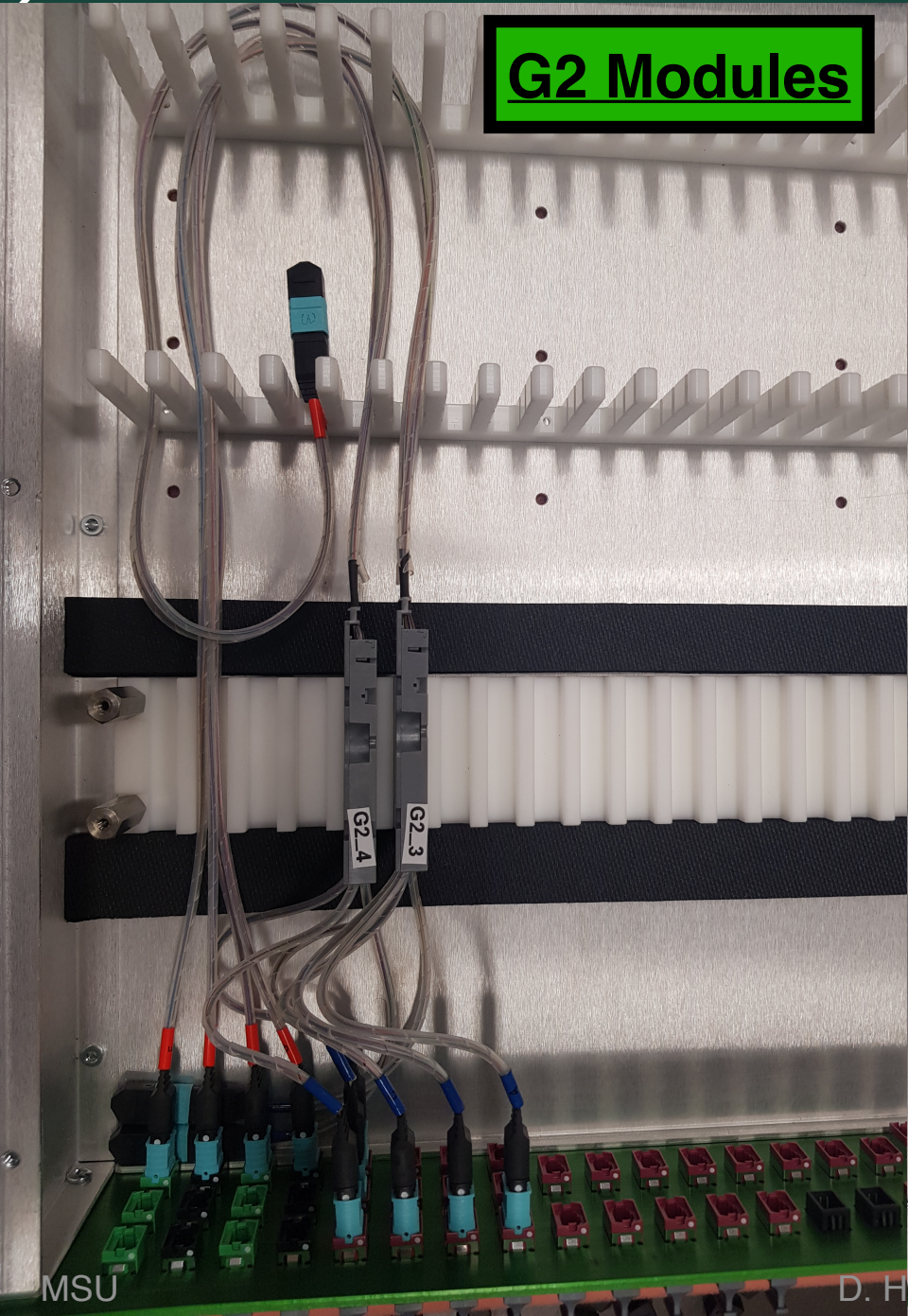
- x1 ■
- x2 ■
- x4 ■
- x8 ■
- x16 ■
- Shuffle Box ▮
- Short Side ★
- Input/Output ↑

B

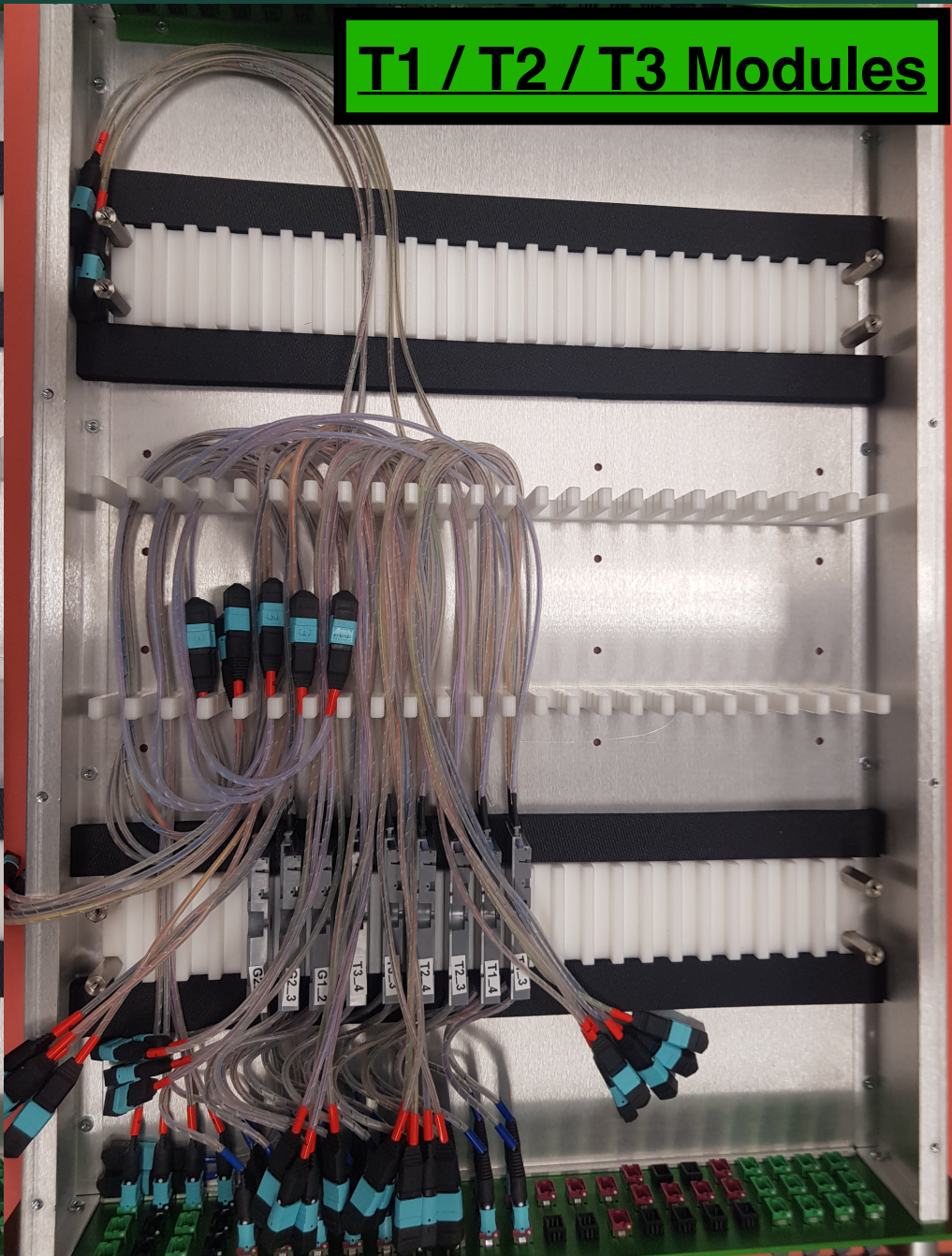
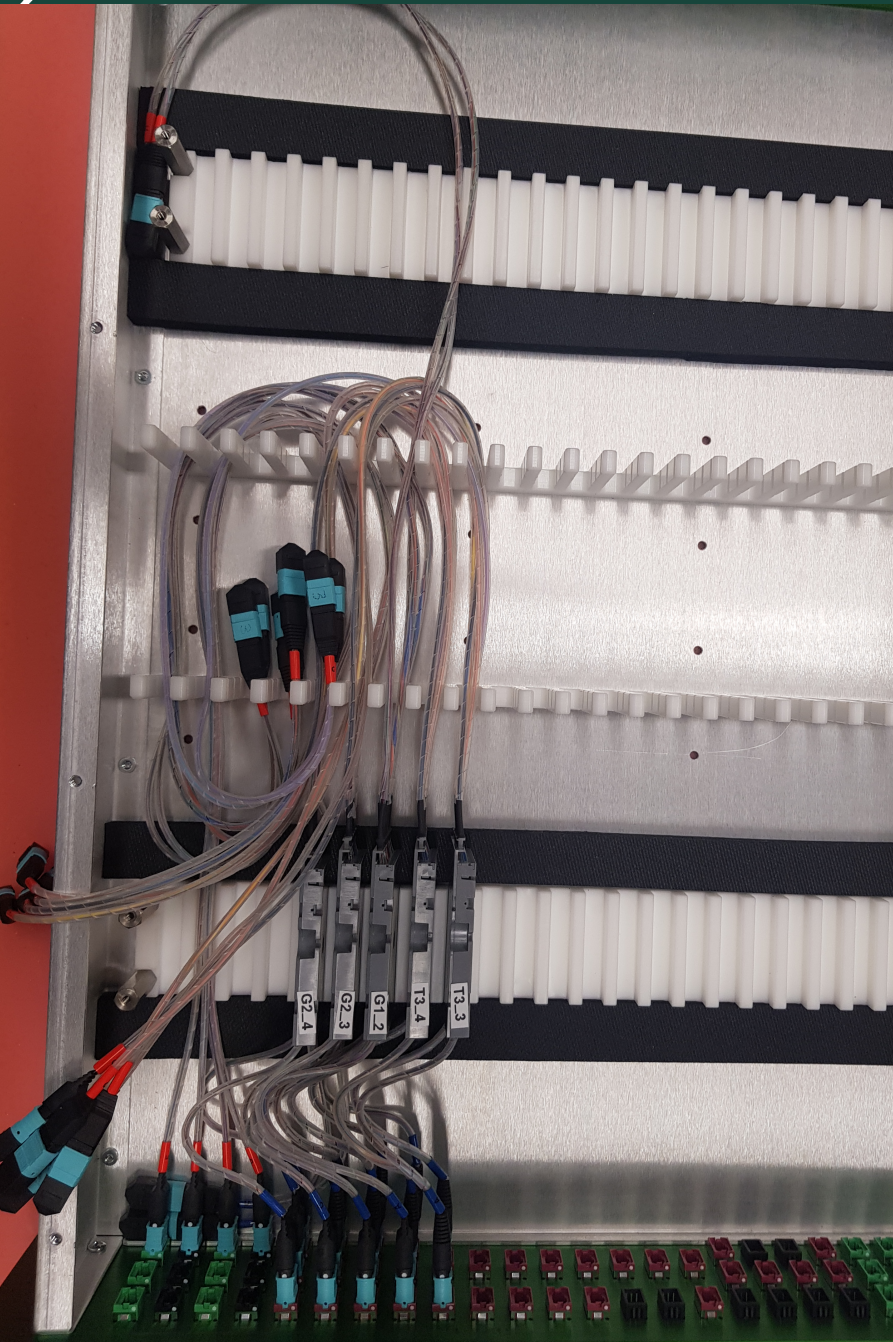
12 x jFEX (48w)

G2 Modules

G1 Module



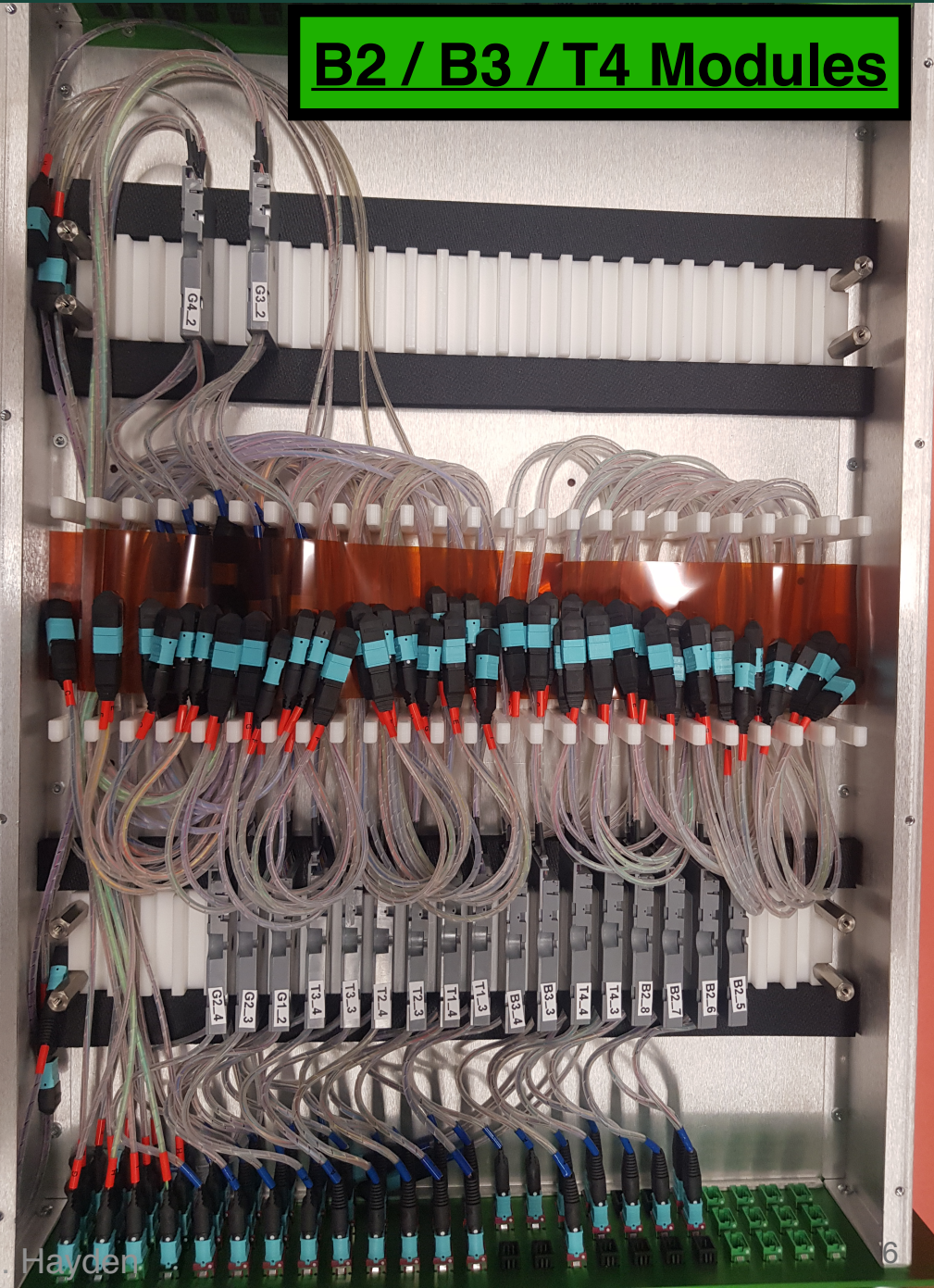
T1 / T2 / T3 Modules

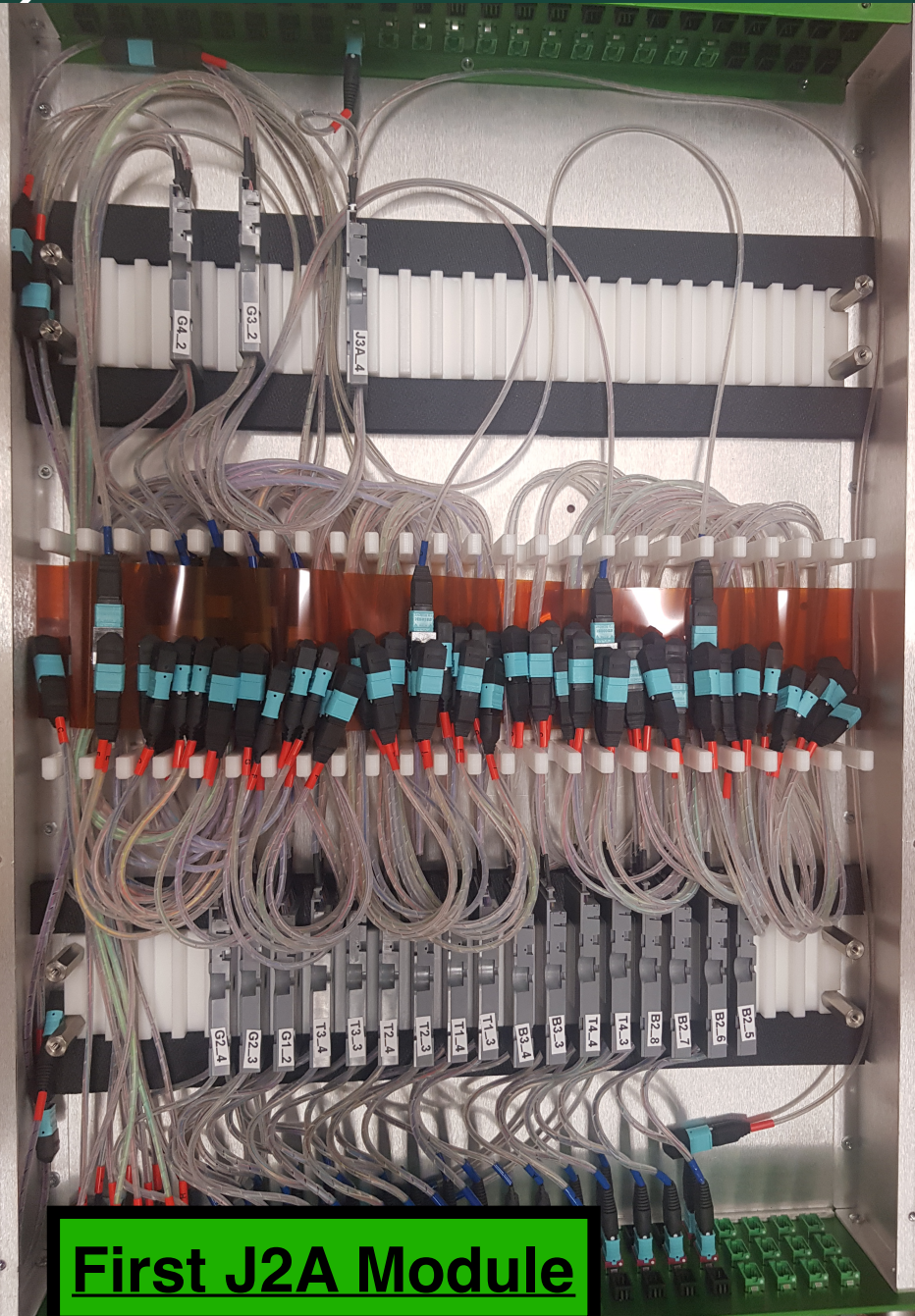


G4 / G3 Modules

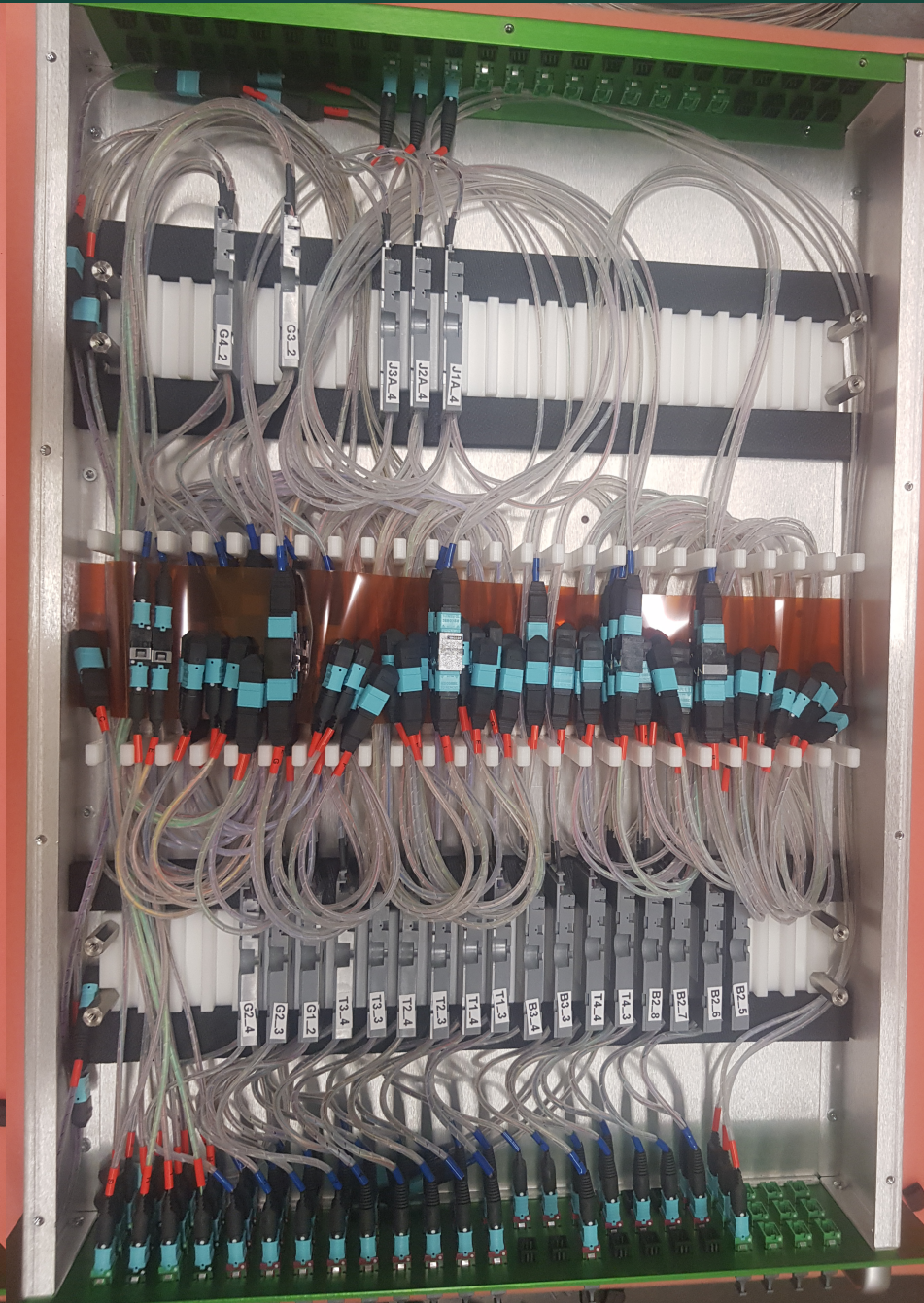


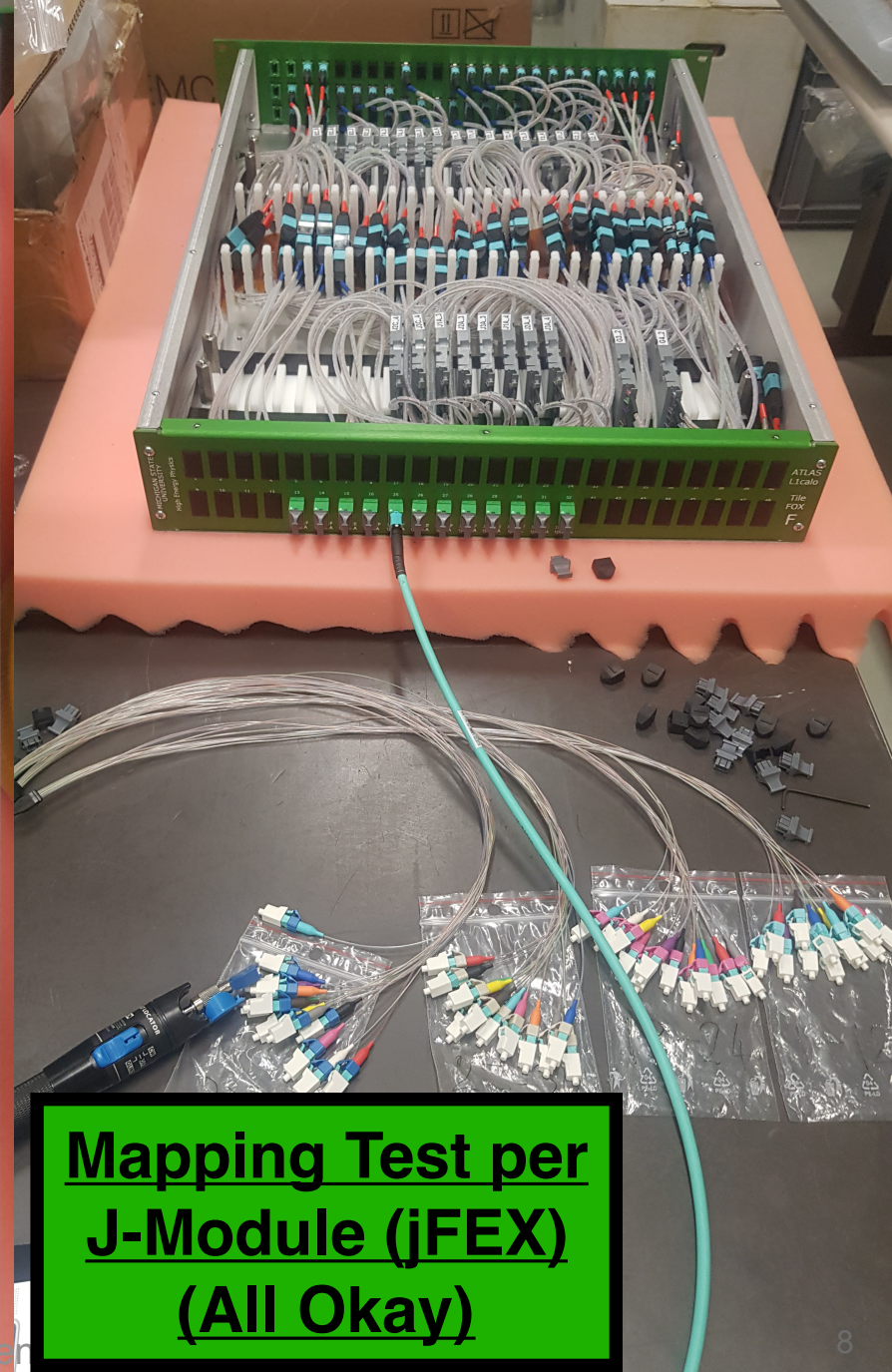
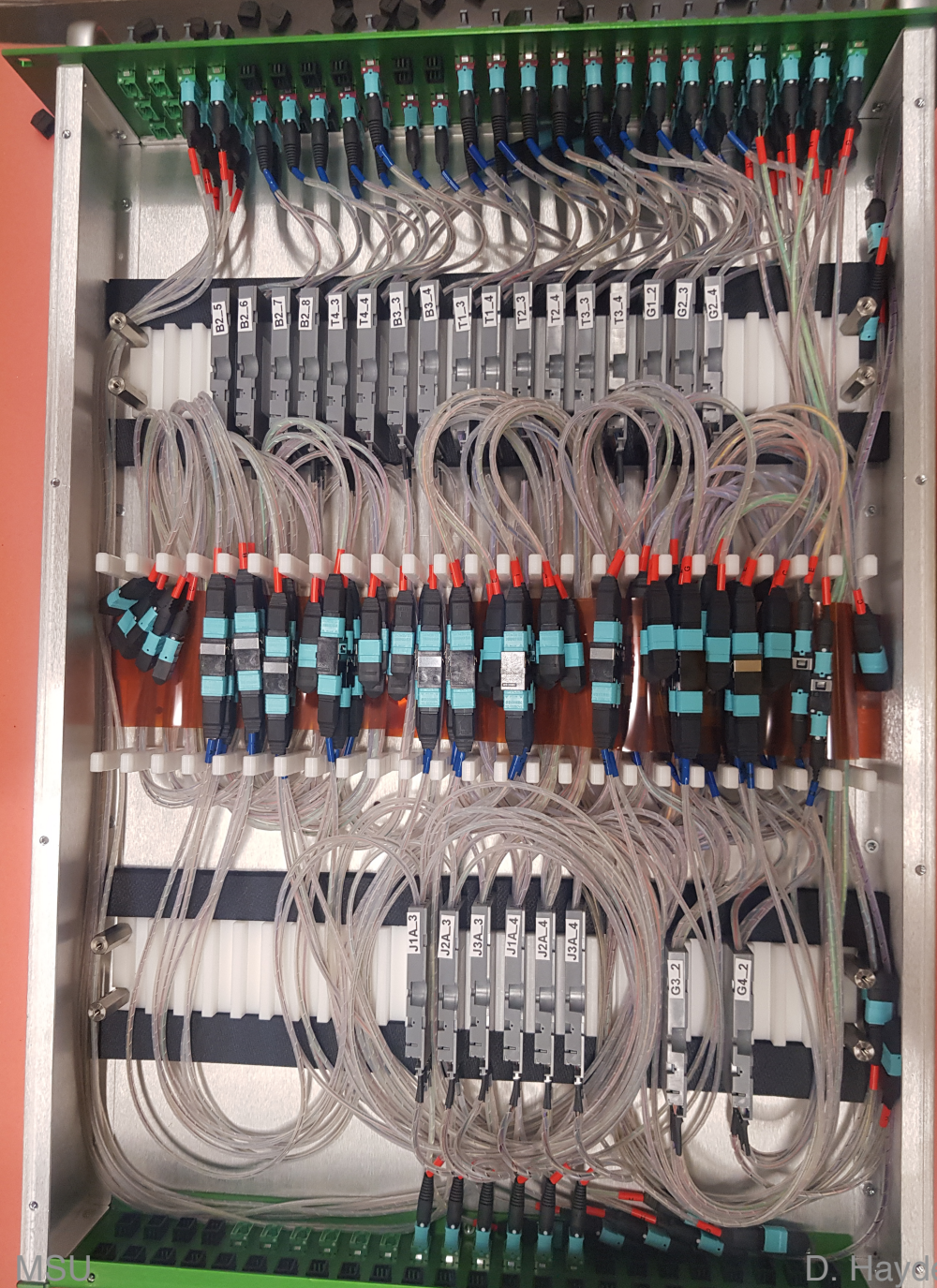
B2 / B3 / T4 Modules





First J2A Module





Mapping Test per
J-Module (jFEX)
(All Okay)

Finished Box



Lessons Learned

Lesson 1

Came across a strange label on one of the modules.
Out of an abundance of caution I swapped it out for a spare.
Have not tested the module.



Lessons Learned

Lesson 2

One of the screw threads came out of its housing. This was probably due to the screw being slightly offset, and the force required to screw it in causing the thread to come away from box. There are other deliberate (similar) holes in the box so not a problem. Have taped the screw into the hole in this case.

