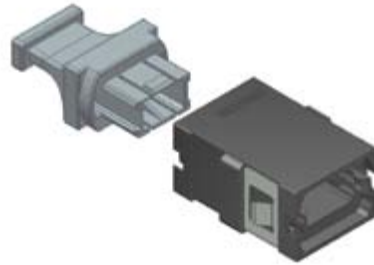


Standard Footprint



SC Footprint

US Conec manufactures durable MTP® brand adapters that provide quick connection for up to 72 optical fibers. Connection integrity is provided by adapter latches which are locked into place by a spring loaded sliding mechanism on the MTP® brand connector plug. Precision alignment is achieved with patented MTP brand connector guide pins combined with the tightly controlled guide pin holes on US Conec's MT ferrules. Numerous single port and ganged configurations are available to satisfy a variety of applications. US Conec's MTP brand adapters are fully compliant with IEC Standard 61754-7 and TIA 604-5 - Type MPO.

### Features:

- One piece adapter design maximizes coupling strength while minimizing debris generation
- All adapters compatible with MTP Elite® brand connectors and standard grade MTP® brand connectors
- Available in black, red, aqua, beige, green, blue magenta and gray
- Supplied with either one or two thermoplastic non-debris generating dust plugs
- Compatible with all US Conec MTP® brand connectors in fiber counts ranging from 4 to 72
- Optimal coarse alignment to minimize pin to ferrule debris generation
- EMI versions available

### Applications

- Array trunk cabling
- Array fiber to single fiber cassettes
- High fiber density card edge access
- Optical switching interframe connections
- Meets IEC Standard 61754-7
- Meets TIA/EIA 604-5 Type MPO
- Structured cabling per TIA-568-C
  - Parallel Optics
    - 40G and 100G IEEE 802.3
    - QSFP
    - PSM4
    - CXP
    - CFP

### Standard Footprint Adapter

Part Number (with 1 dust plug)	Part Number (with 2 dust plugs)	Flange Type	Color	Key Orientation*
MTP-ADPT	MTP-ADPT-2	Full Flange	Black	Opposed
6496	9220	Full Flange	Beige	Opposed
7868	8852	Full Flange	Green	Opposed
7869	9218	Full Flange	Aqua	Opposed
6531	9135	Full Flange	Blue	Opposed
5306	12196	Full Flange	Gray	Aligned
13569	13570	Full Flange	Red	Opposed
13770	13771	Full Flange	Magenta	Opposed
15659	15660	Full Flange	Yellow	Opposed
MTP-RF-ADPT	12075	Reduced Flange	Black	Opposed
12197	12202	Reduced Flange	Beige	Opposed
12198	12203	Reduced Flange	Green	Opposed
9574	12204	Reduced Flange	Aqua	Opposed
12200	12205	Reduced Flange	Blue	Opposed
12035	12206	Reduced Flange	Gray	Aligned
13571	13572	Reduced Flange	Red	Opposed
13850	13851	Reduced Flange	Magenta	Opposed
15661	15662	Reduced Flange	Yellow	Opposed

\*Opposed: Key Option 1, TIA 604-5D

\*Aligned: Key Option 2, TIA 604-5D

### SC Footprint Adapter

Part Number (with 1 dust plug)	Part Number (with 2 dust plugs)	Flange Type	Color	Key Orientation*
12036	12216	Full Flange	Black	Opposed
12212	12217	Full Flange	Beige	Opposed
12213	12218	Full Flange	Green	Opposed
12214	12219	Full Flange	Aqua	Opposed
12215	12220	Full Flange	Blue	Opposed
12037	12221	Full Flange	Gray	Aligned
13573	13574	Full Flange	Red	Opposed
13772	13773	Full Flange	Magenta	Opposed
12041	12226	Reduced Flange	Black	Opposed
12222	12227	Reduced Flange	Beige	Opposed
12223	12228	Reduced Flange	Green	Opposed
12224	12229	Reduced Flange	Aqua	Opposed
12225	12230	Reduced Flange	Blue	Opposed
12042	12231	Reduced Flange	Gray	Aligned
13575	13576	Reduced Flange	Red	Opposed
13852	13853	Reduced Flange	Magenta	Opposed

\*Opposed: Key Option 1, TIA 604-5D

\*Aligned: Key Option 2, TIA 604-5D

Main: 828.323.8883 • Toll Free: 800.769.0944 • www.usconec.com

MTP®, MTP Elite®, Conec®, MT Elite®, IBC™, PRIZM®, LightTurn®, PRIZM® MT and Slimfan™ are trademarks or registered trademarks of US Conec Ltd.

### SC Duplex Footprint Adapter

Part Number (with 2 dust plug)	Part Number (with 4 dust plugs)	Flange Type	Color	Key Orientation*
14974	14992	Full Flange	Black	Opposed
14975	14993	Full Flange	Beige	Opposed
14977	14994	Full Flange	Green	Opposed
14978	14995	Full Flange	Aqua	Opposed
14979	14996	Full Flange	Blue	Opposed
14980	14997	Full Flange	Gray	Aligned
14981	14998	Full Flange	Red	Opposed
14982	15000	Full Flange	Magenta	Opposed
14983	15001	Reduced Flange	Black	Opposed
14984	15002	Reduced Flange	Beige	Opposed
14985	15003	Reduced Flange	Green	Opposed
14986	15004	Reduced Flange	Aqua	Opposed
14987	15005	Reduced Flange	Blue	Opposed
14988	15006	Reduced Flange	Gray	Aligned
14989	15007	Reduced Flange	Red	Opposed
14990	15008	Reduced Flange	Magenta	Opposed

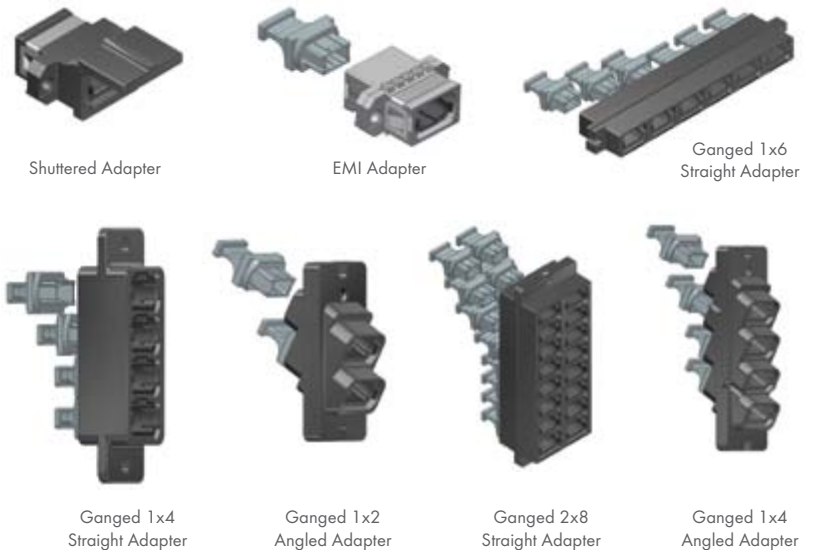


SC Duplex Footprint

\*Opposed: Key Option 1, TIA 604-5D  
\*Aligned: Key Option 2, TIA 604-5D

### Specialty Adapters

Part Number	Description	Color	Key Orientation
8835	Shuttered Adapter	Black	Opposed
9518	Shuttered Adapter	Gray	Aligned
12431	Shuttered Adapter	Aqua	Opposed
5702	EMI Adapter, Full Flange	Silver	Opposed
6156	EMI Adapter, Reduced Flange	Silver	Opposed
9578	Ganged 1 x 4 Straight Adapter	Black	Opposed
12697	Ganged 1 x 6 Straight Adapter	Black	Opposed
12698	Ganged 2 x 8 Straight Adapter	Black	Opposed
12278	Ganged 1 x 2 Angled Adapter	Black	Opposed
9299	Ganged 1 x 4 Angled Adapter	Black	Opposed



Shuttered Adapter

EMI Adapter

Ganged 1x6  
Straight Adapter

Ganged 1x4  
Straight Adapter

Ganged 1x2  
Angled Adapter

Ganged 2x8  
Straight Adapter

Ganged 1x4  
Angled Adapter

For additional information about MTP® Brand or Specialty Adapters or help finding a local distributor, please contact Customer Service at 828-323-8883 or visit our web site at [www.usconec.com](http://www.usconec.com)

Main: 828.323.8883 • Toll Free: 800.769.0944 • [www.usconec.com](http://www.usconec.com)

MTP®, MTP Elite®, Conec®, MT Elite®, IBC™, PRIZM®, LightTurn®, PRIZM® MT and Slimfan™ are trademarks or registered trademarks of US Conec Ltd.