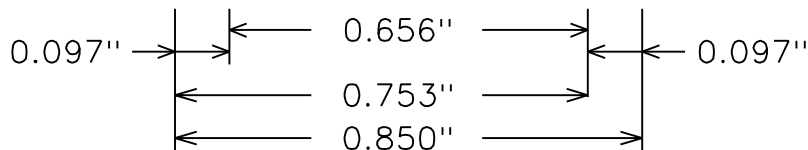
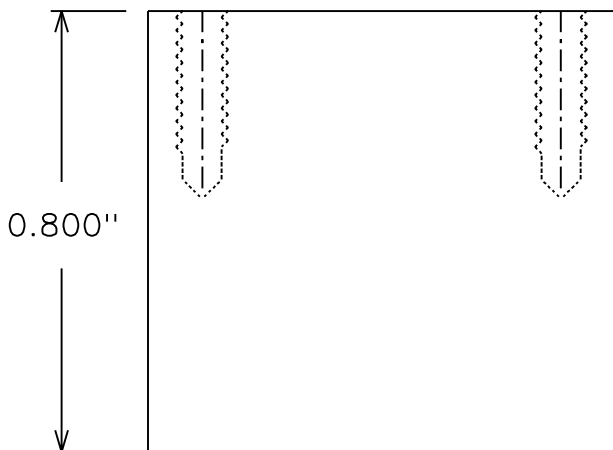
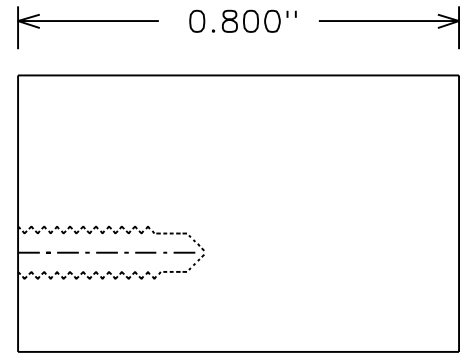
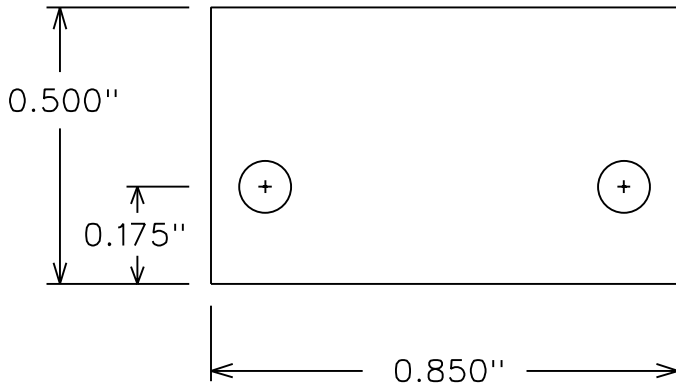


Hub MPO Filler Bracket

The 0.500" dimension of the finished parts may be left at the nominal thickness of the bar stock.



The two holes are drilled and tapped for 2-56 with $\frac{1}{4}$ " minimum of good threads. You may make these through holes if you want to.

Material:
Rectangular Delrin Bar Stock
 $\frac{1}{2}$ " x 1" Cross Section

Drw: M34

Rev.

7-Dec-2017

Quantity Needed: 56

All Dimensions Are in Inches