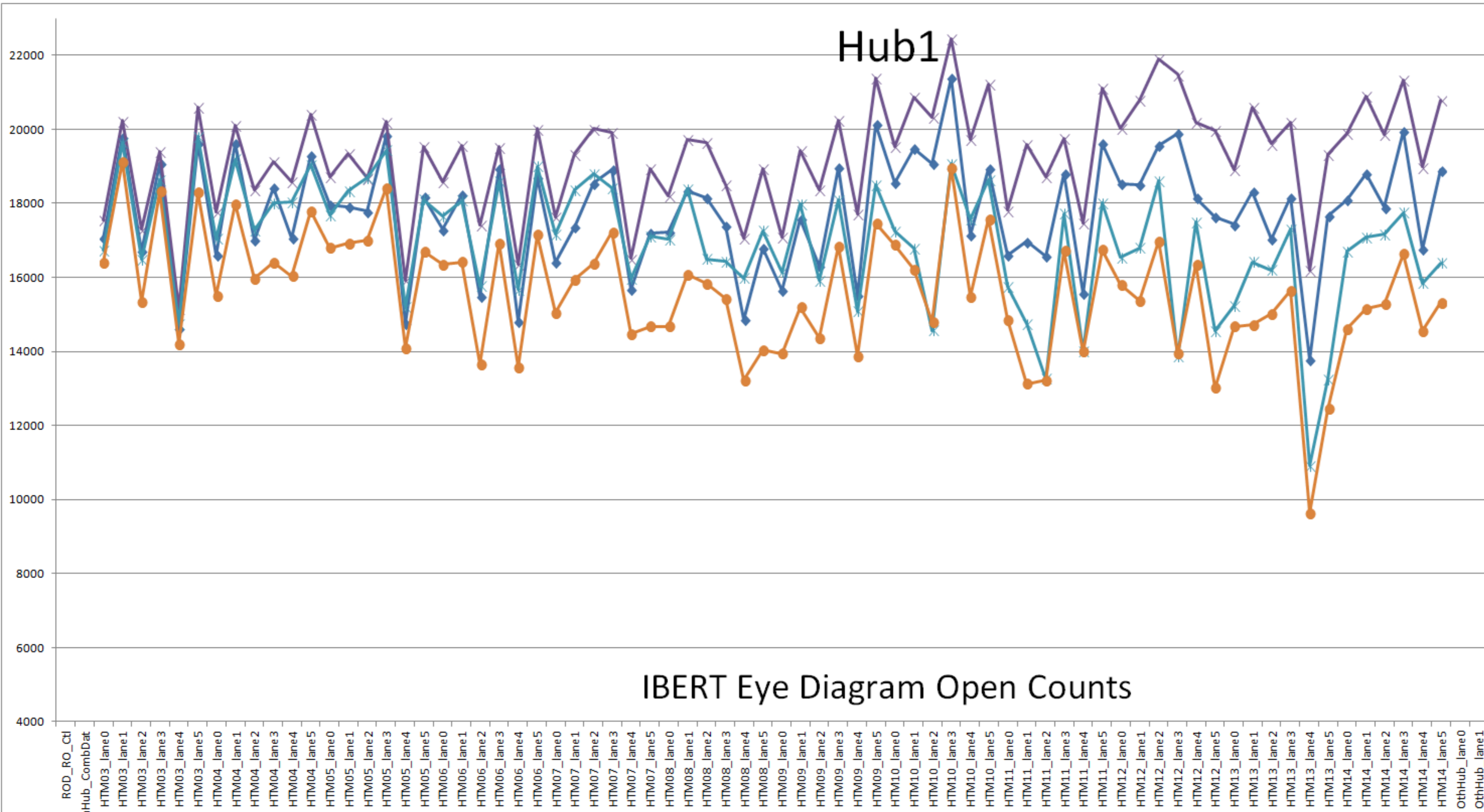


# Hub1

IBERT  
@6.4Gbps  
PRBS-31

DFE ON vs OFF  
Equalizer ON vs OFF



## IBERT Eye Diagram Open Counts

- O Hub1 06-Nov-2018\_d noDFE & EqOFF
- O Hub1 07-Nov-2018\_b noDFE & EqON
- O Hub1 07-Nov-2018\_a DFE & EqON
- O Hub1 06-Nov-2018\_e DFE & EqOFF
- O
- O
- O

**Hub1:** SN04  
FW: IBERT+IPbus  
rev 06-Nov-2018

**Hub2:** SN05  
FW: IBERT+IPbus  
rev 06-Nov-2018

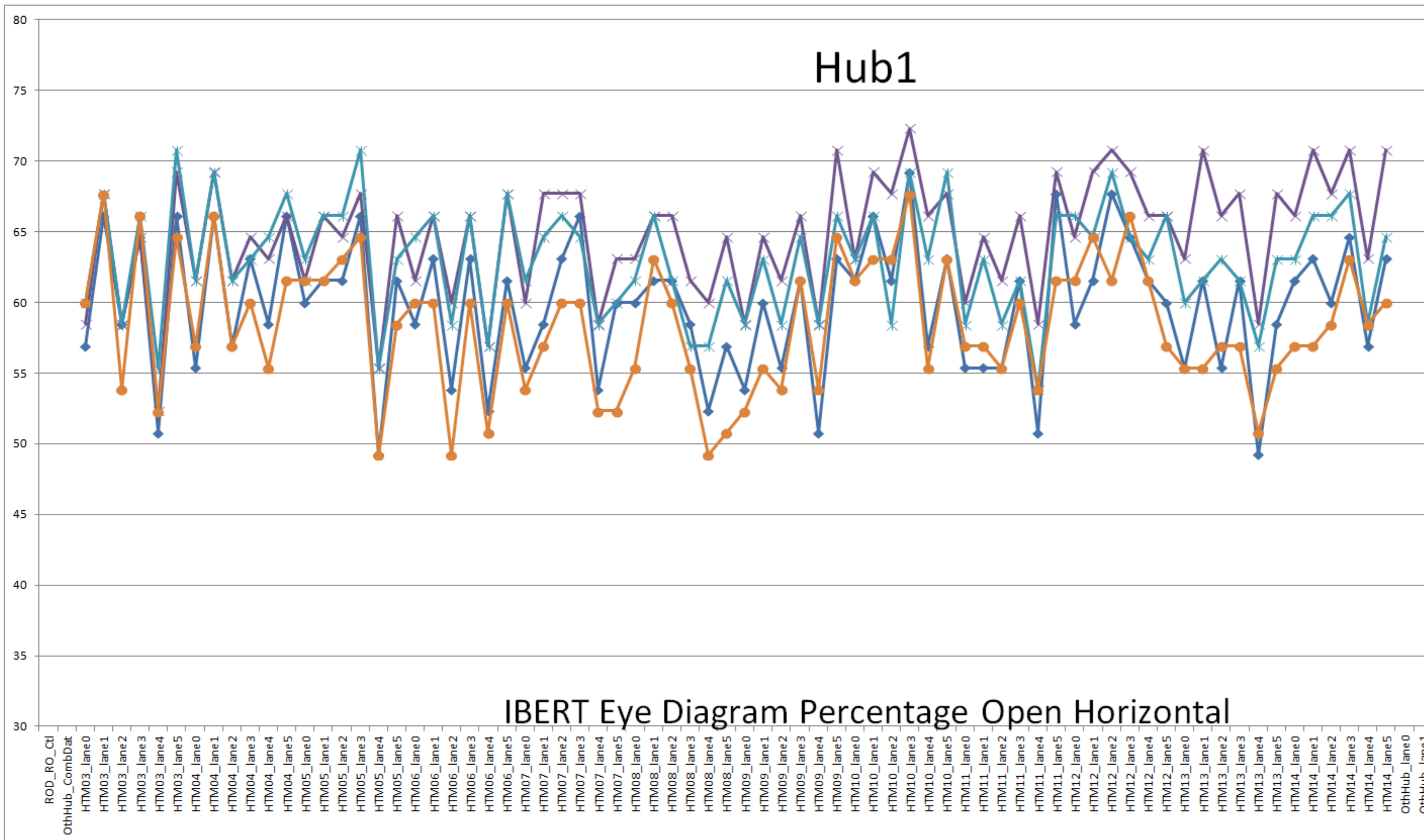
**ROD2:** SN00  
FW: IBERT 03/05-Aug-2017

**HTM3-14:**  
S/N 9,6,1,7,4,8,  
5,11,10,12,3,13  
FW: IBERT+IPbus  
rev 07-Sep-2018

# Hub1

IBERT  
@6.4Gbps  
PRBS-31

DFE ON vs OFF  
Equalizer ON vs OFF



- ◆ H% Hub1 06-Nov-2018\_d noDFE & EqOFF
- ✕ H% Hub1 07-Nov-2018\_b noDFE & EqON
- \* H% Hub1 07-Nov-2018\_a DFE & EqON
- H% Hub1 06-Nov-2018\_e DFE & EqOFF
- H%
- ▲ H%
- ◆ H%

**Hub1:** SN04  
FW: IBERT+IPbus  
rev 06-Nov-2018

**Hub2:** SN05  
FW: IBERT+IPbus  
rev 06-Nov-2018

**ROD2:** SN00  
FWIBERT 03/05-Aug-2017

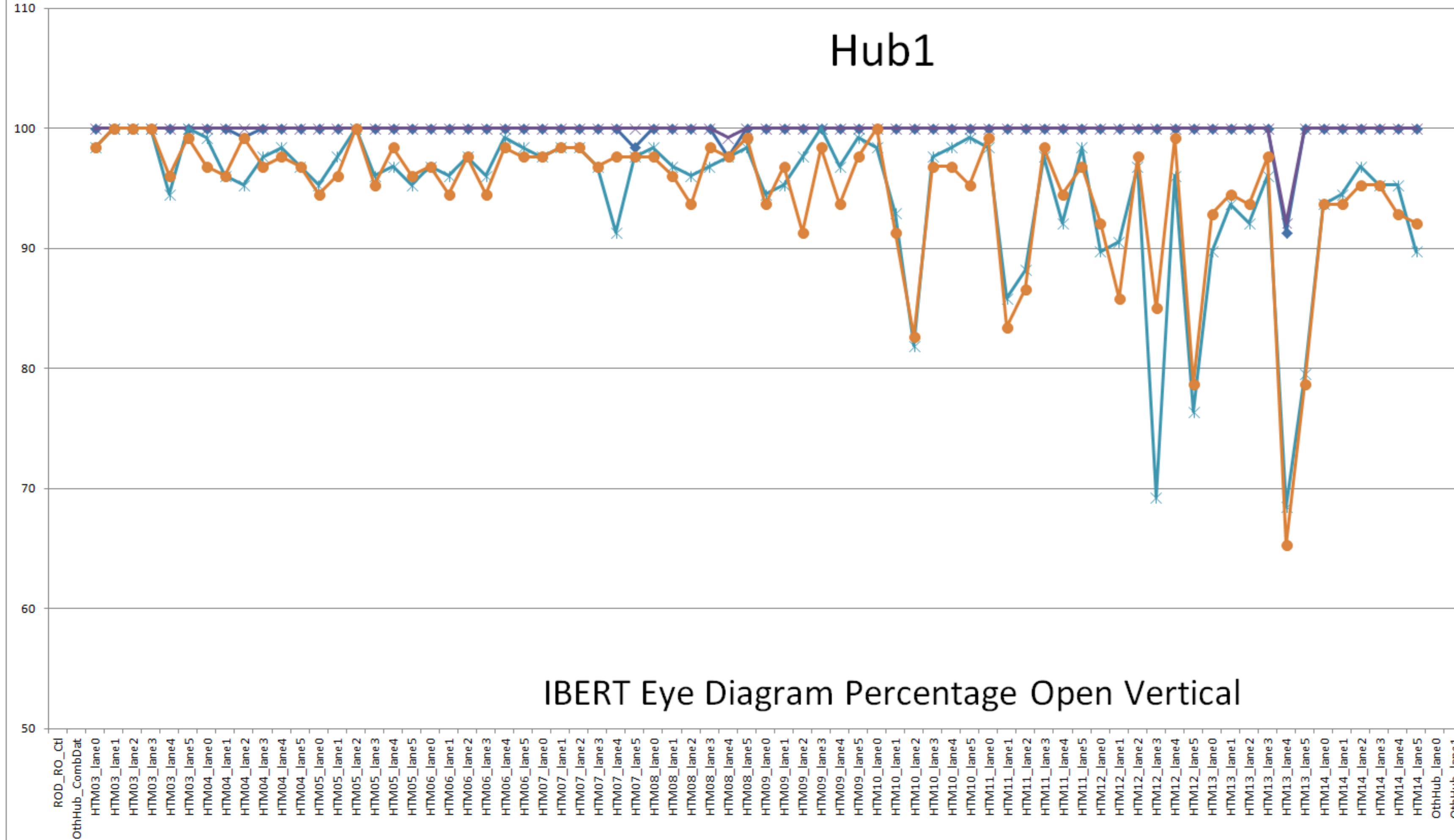
**HTM3-14:**  
S/N 9,6,1,7,4,8,  
5,11,10,12,3,13  
FW: IBERT+IPbus  
rev 07-Sep-2018

## IBERT Eye Diagram Percentage Open Horizontal

# Hub1

IBERT  
@6.4Gbps  
PRBS-31

DFE ON vs OFF  
Equalizer ON vs OFF



- V% Hub1 06-Nov-2018\_d noDFE & EqOFF
- V% Hub1 07-Nov-2018\_b noDFE & EqON
- V% Hub1 07-Nov-2018\_a DFE & EqON
- V% Hub1 06-Nov-2018\_e DFE & EqOFF
- V%
- V%
- V%

**Hub1:** SN04  
FW: IBERT+IPbus  
rev 06-Nov-2018

**Hub2:** SN05  
FW: IBERT+IPbus  
rev 06-Nov-2018

**ROD2:** SN00  
FWIBERT 03/05-Aug-2017

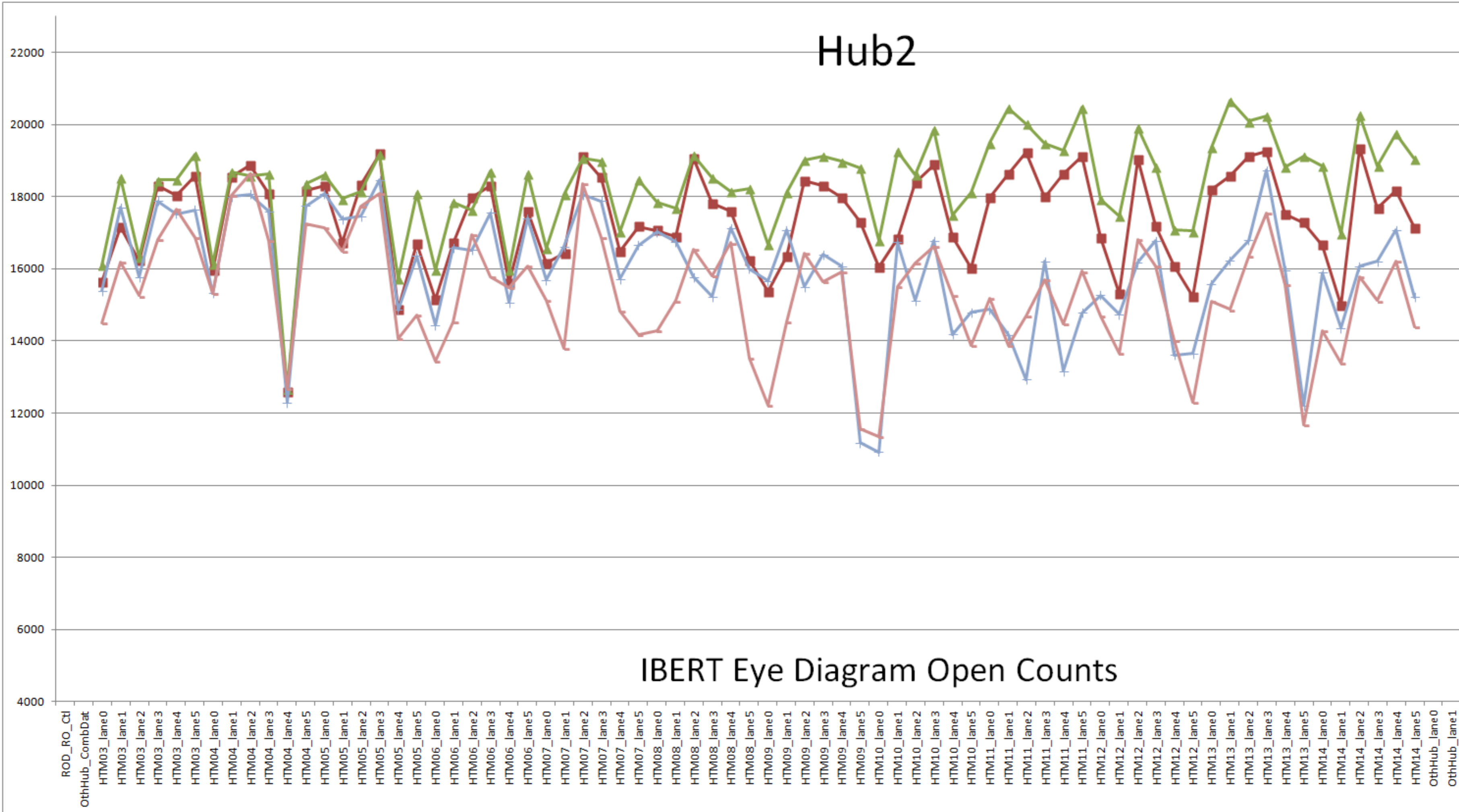
**HTM3-14:**  
S/N 9,6,1,7,4,8,  
5,11,10,12,3.13  
FW: IBERT+IPbus  
rev 07-Sep-2018

## IBERT Eye Diagram Percentage Open Vertical

# Hub2

IBERT  
@6.4Gbps  
PRBS-31

DFE ON vs OFF  
Equalizer ON vs OFF



- O Hub2 06-Nov-2018\_d noDFE & EqOFF
- ▲ O Hub2 07-Nov-2018\_b noDFE & EqON
- + O Hub2 07-Nov-2018\_a DFE & EqON
- O Hub2 06-Nov-2018\_e DFE & EqOFF
- ◆ O
- ✕ O
- ✱ O

**Hub1:** SN04  
FW: IBERT+IPbus  
rev 06-Nov-2018

**Hub2:** SN05  
FW: IBERT+IPbus  
rev 06-Nov-2018

**ROD2:** SN00  
FW IBERT 03/05-Aug-2017

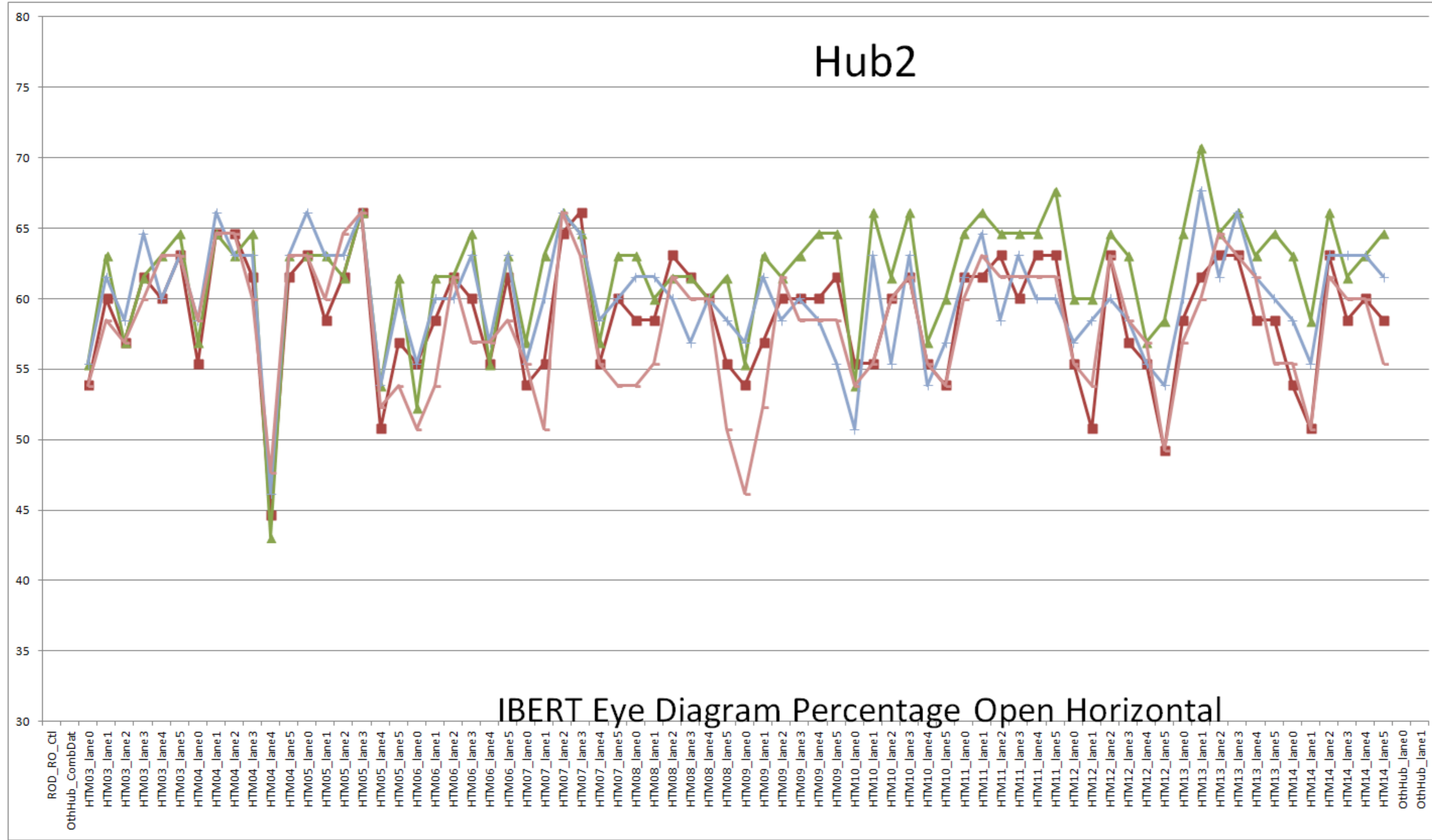
**HTM3-14:**  
S/N 9,6,1,7,4,8,  
5,11,10,12,3,13  
FW: IBERT+IPbus  
rev 07-Sep-2018

## IBERT Eye Diagram Open Counts

# Hub2

IBERT  
@6.4Gbps  
PRBS-31

DFE ON vs OFF  
Equalizer ON vs OFF



- H% Hub2 06-Nov-2018\_d noDFE & EqOFF
- ▲ H% Hub2 07-Nov-2018\_b noDFE & EqON
- + H% Hub2 07-Nov-2018\_a DFE & EqON
- H% Hub2 06-Nov-2018\_e DFE & EqOFF
- ◆ H%
- × H%
- \* H%

**Hub1:** SN04  
FW: IBERT+IPbus  
rev 06-Nov-2018

**Hub2:** SN05  
FW: IBERT+IPbus  
rev 06-Nov-2018

**ROD2:** SN00  
FWIBERT 03/05-Aug-2017

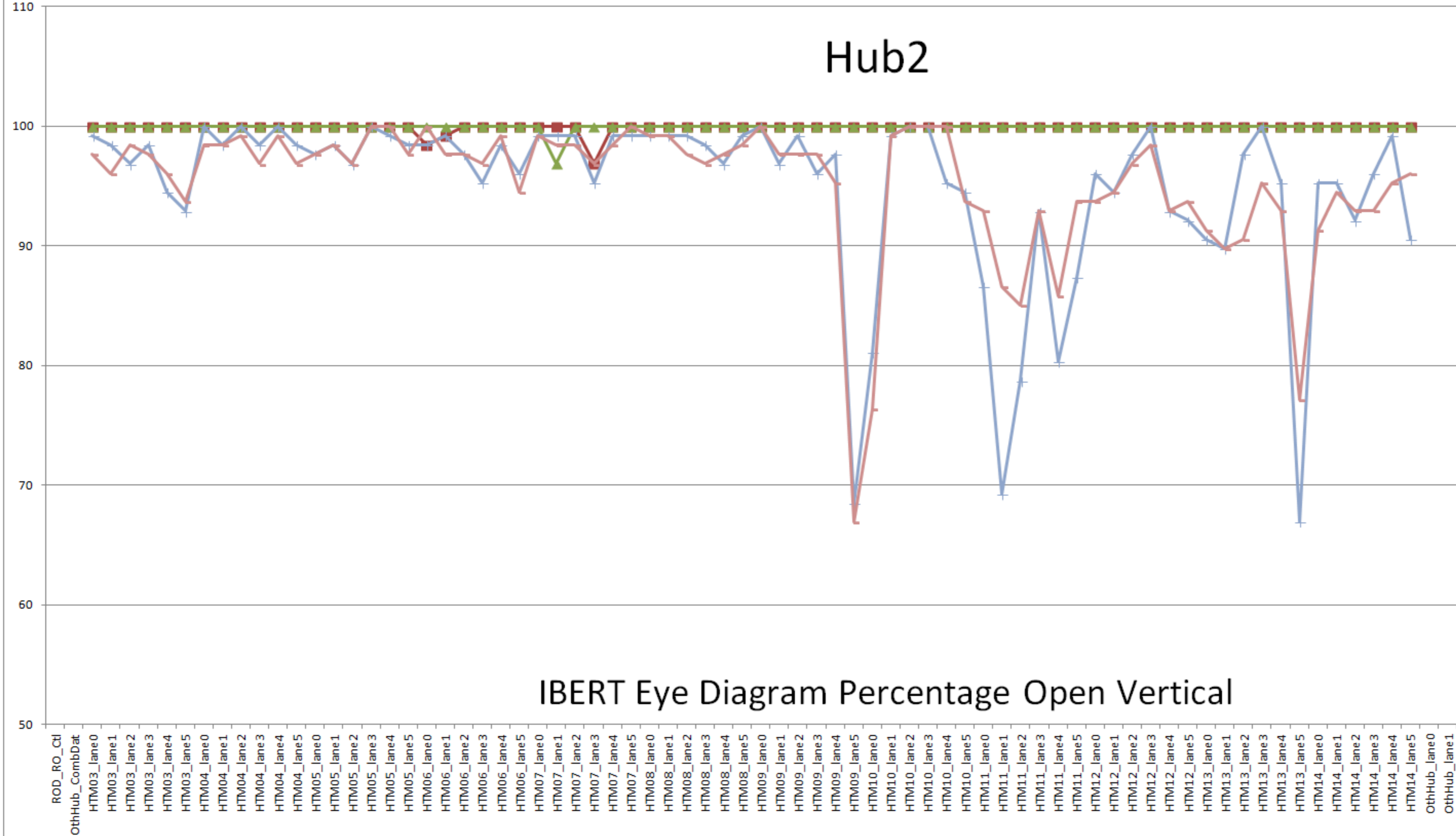
**HTM 3-14:**  
S/N 9,6,1,7,4,8,  
5,11,10,12,3.13  
FW: IBERT+IPbus  
rev 07-Sep-2018

## IBERT Eye Diagram Percentage Open Horizontal

# Hub2

IBERT  
@6.4Gbps  
PRBS-31

DFE ON vs OFF  
Equalizer ON vs OFF



- V% Hub2 06-Nov-2018\_d noDFE & EqOFF
- ▲ V% Hub2 07-Nov-2018\_b noDFE & EqON
- + V% Hub2 07-Nov-2018\_a DFE & EqON
- V% Hub2 06-Nov-2018\_e DFE & EqOFF
- ◆ V%
- × V%
- \* V%

**Hub1:** SN04  
FW: IBERT+IPbus  
rev 06-Nov-2018

**Hub2:** SN05  
FW: IBERT+IPbus  
rev 06-Nov-2018

**ROD2:** SN00  
FW: IBERT 03/05-Aug-2017

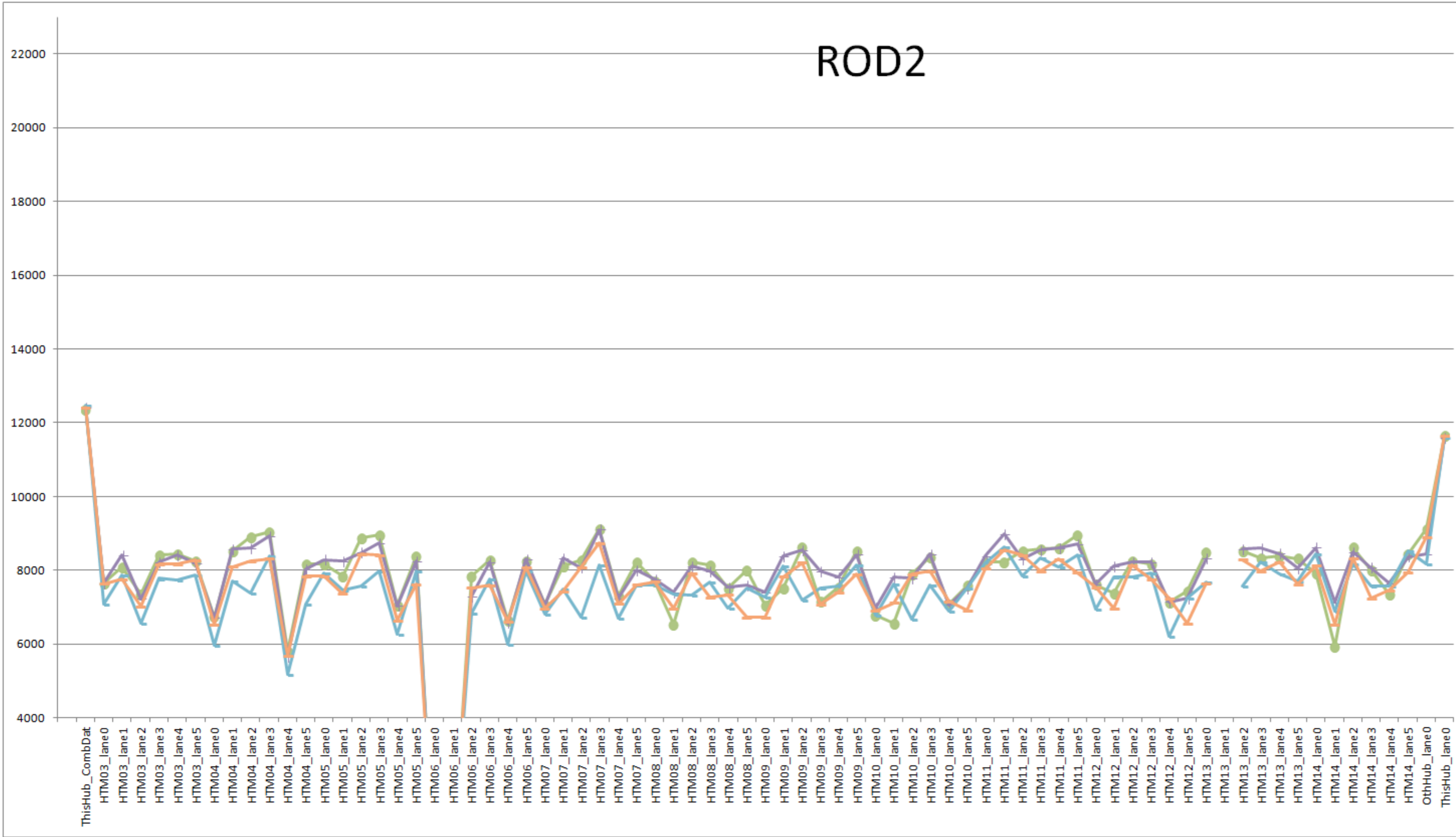
**HTM3-14:**  
S/N 9,6,1,7,4,8,  
5,11,10,12,3,13  
FW: IBERT+IPbus  
rev 07-Sep-2018

## IBERT Eye Diagram Percentage Open Vertical

# ROD2

IBERT  
@6.4Gbps  
PRBS-31

DFE ON vs OFF  
Equalizer ON vs OFF



- O ROD2 06-Nov-2018\_d noDFE & EqOFF
- O ROD2 07-Nov-2018\_b noDFE & EqON
- O ROD1 07-Nov-2018\_a DFE & EqON
- O ROD2 06-Nov-2018\_e DFE & EqOFF
- O
- O
- O

**Hub1:** SN04  
FW: IBERT+IPbus  
rev 06-Nov-2018

**Hub2:** SN05  
FW: IBERT+IPbus  
rev 06-Nov-2018

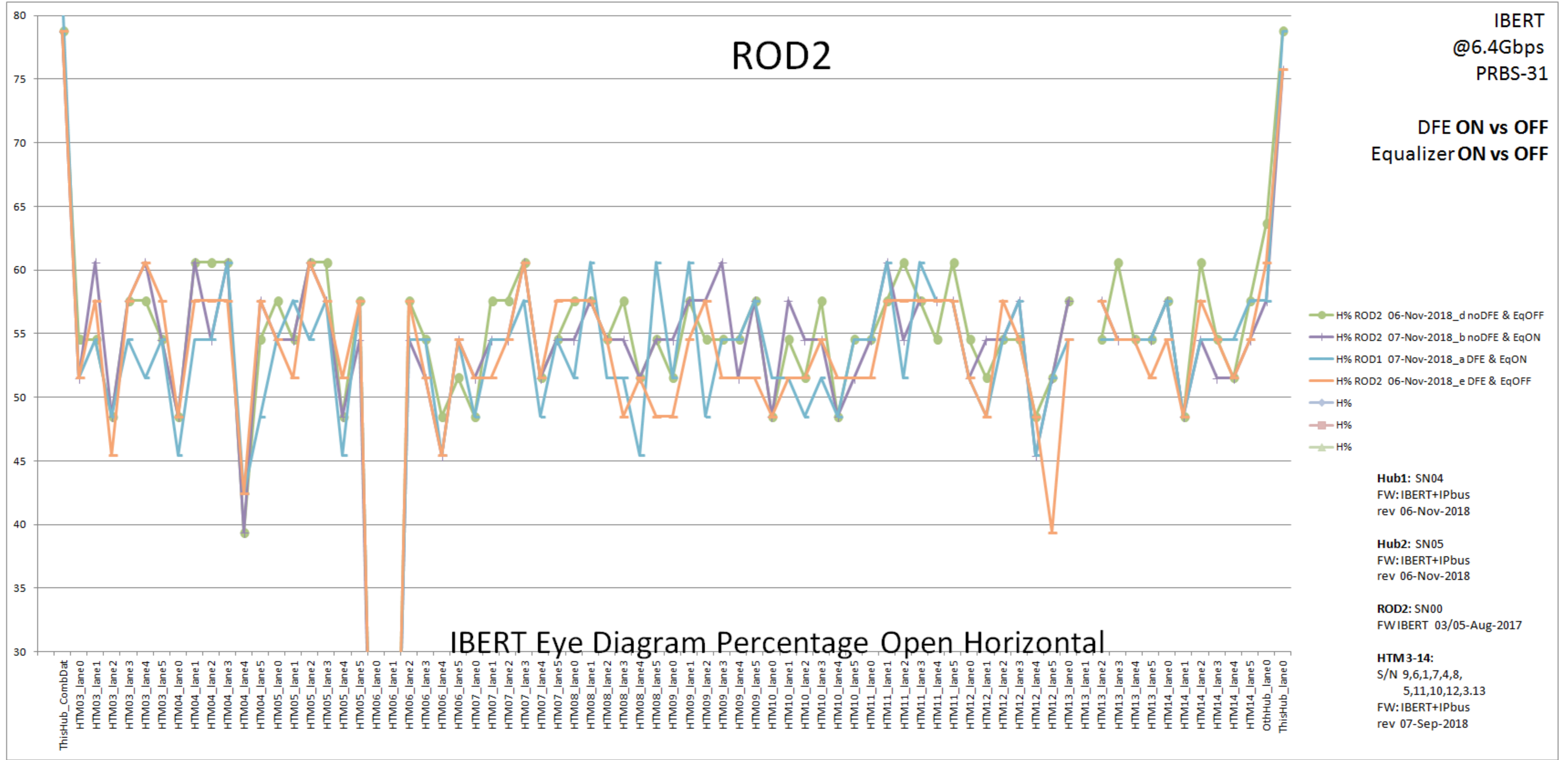
**ROD2:** SN00  
FW: IBERT 03/05-Aug-2017

**HTM3-14:**  
S/N 9,6,1,7,4,8,  
5,11,10,12,3,13  
FW: IBERT+IPbus  
rev 07-Sep-2018

# ROD2

IBERT  
@6.4Gbps  
PRBS-31

DFE ON vs OFF  
Equalizer ON vs OFF

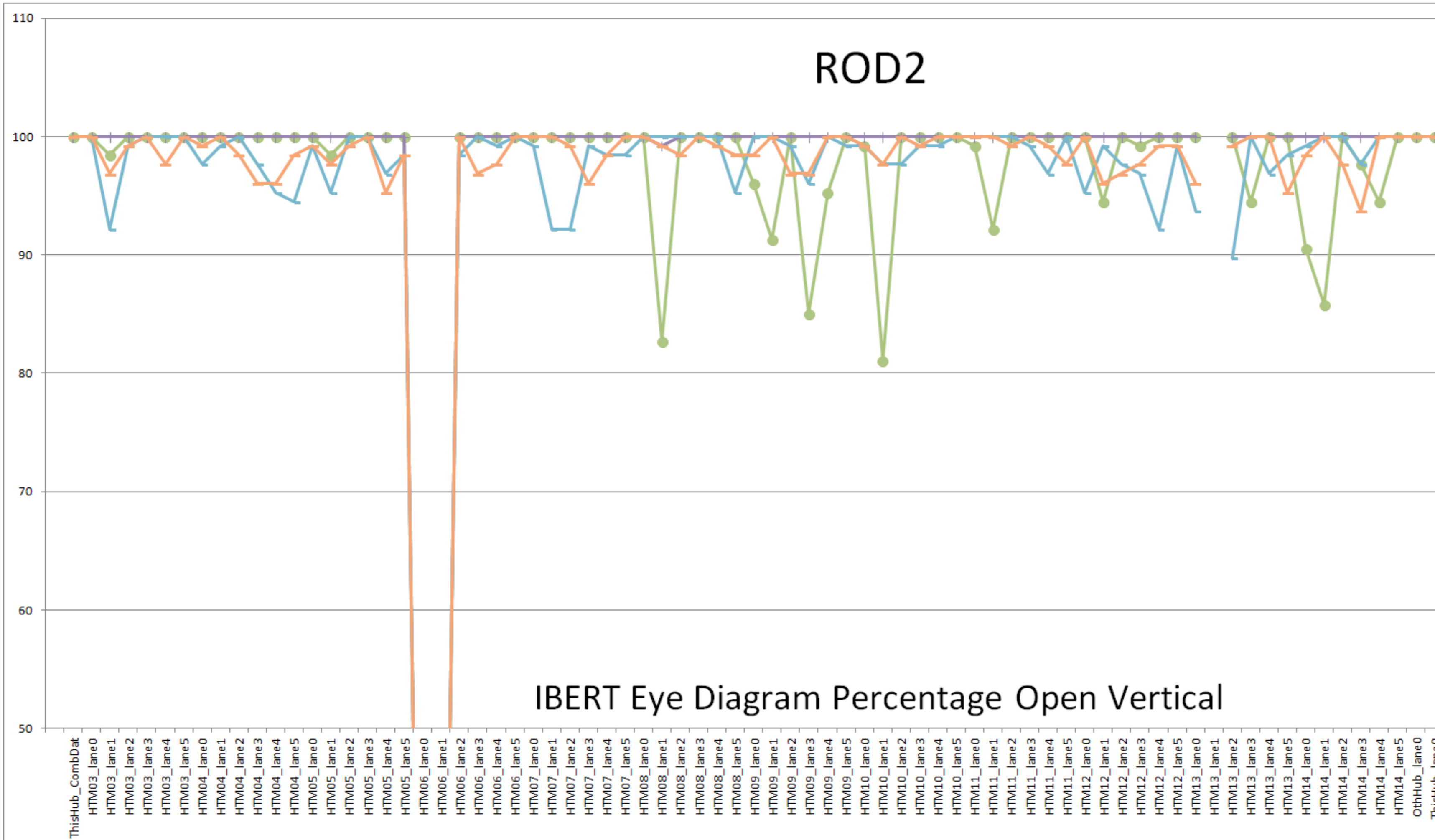




# ROD2

IBERT  
@6.4Gbps  
PRBS-31

DFE ON vs OFF  
Equalizer ON vs OFF



- V% ROD2 06-Nov-2018\_d noDFE & EqOFF
- V% ROD2 07-Nov-2018\_b noDFE & EqON
- V% ROD1 07-Nov-2018\_a DFE & EqON
- V% ROD2 06-Nov-2018\_e DFE & EqOFF
- V%
- V%
- V%

**Hub1:** SN04  
FW: IBERT+IPbus  
rev 06-Nov-2018

**Hub2:** SN05  
FW: IBERT+IPbus  
rev 06-Nov-2018

**ROD2:** SN00  
FW: IBERT 03/05-Aug-2017

**HTM3-14:**  
S/N 9,6,1,7,4,8,  
5,11,10,12,3,13  
FW: IBERT+IPbus  
rev 07-Sep-2018

## IBERT Eye Diagram Percentage Open Vertical