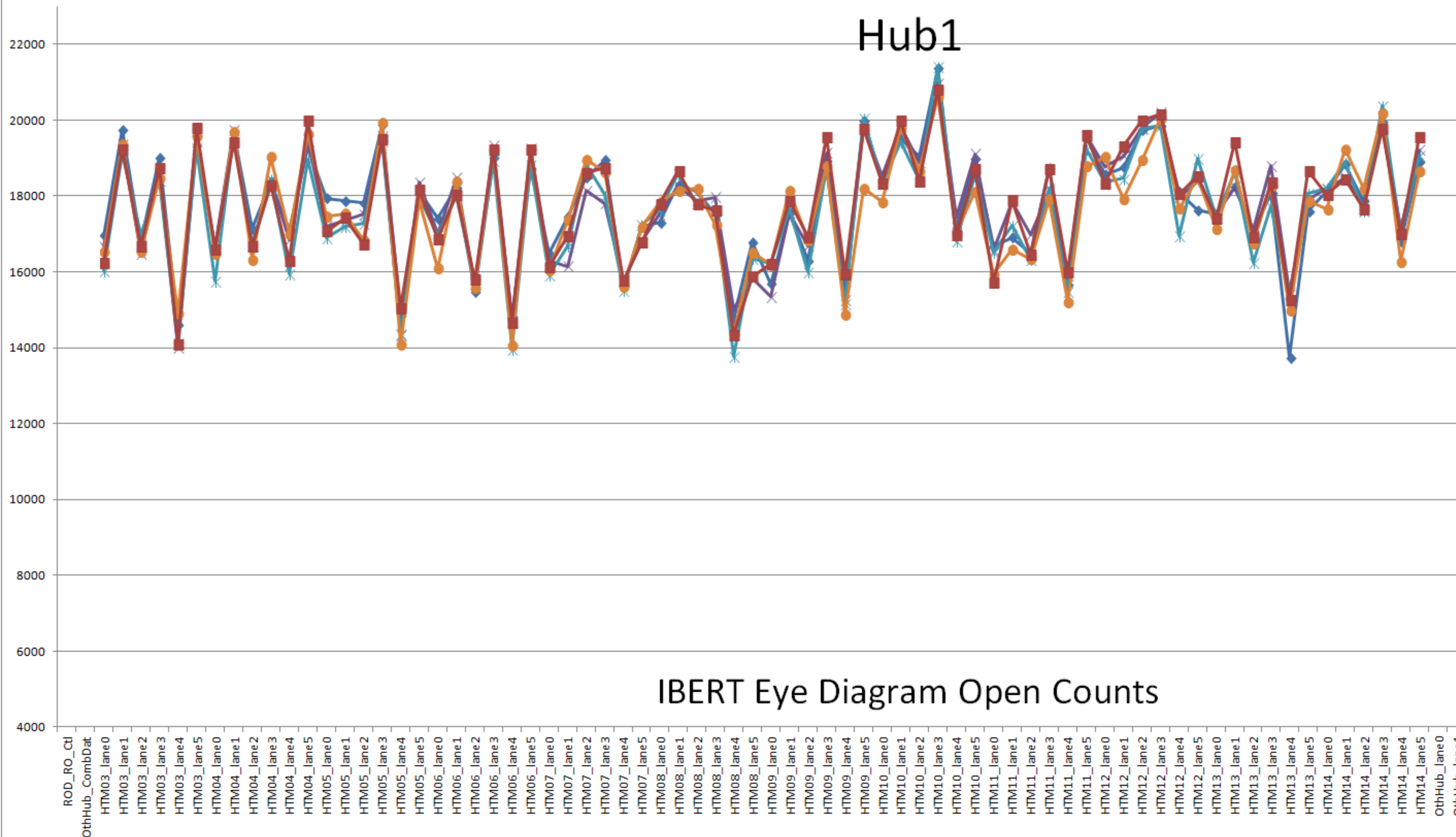


# Hub1

IBERT  
@6.4Gbps  
PRBS-31

DFE OFF  
Equalizer OFF



## IBERT Eye Diagram Open Counts

- O HUB1 SN04 05:06-Nov-2018\_avg noDFE&EqOFF
- O HUB1 SN05 02:03-Nov-2018\_avg noDFE&EqOFF
- O HUB1 SN06 26:27-Oct-2018\_avg noDFE&EqOFF
- O HUB1 SN07 23:26-Oct-2018\_avg noDFE&EqOFF
- O HUB1 SN08 16:18-Nov-2018\_avg noDFE&EqOFF
- O
- O

**Hub1:** SN04,05,06,07 or 08  
FW: IBERT+IPbus  
rev 12-Sep-2018  
or 06-SNov2018

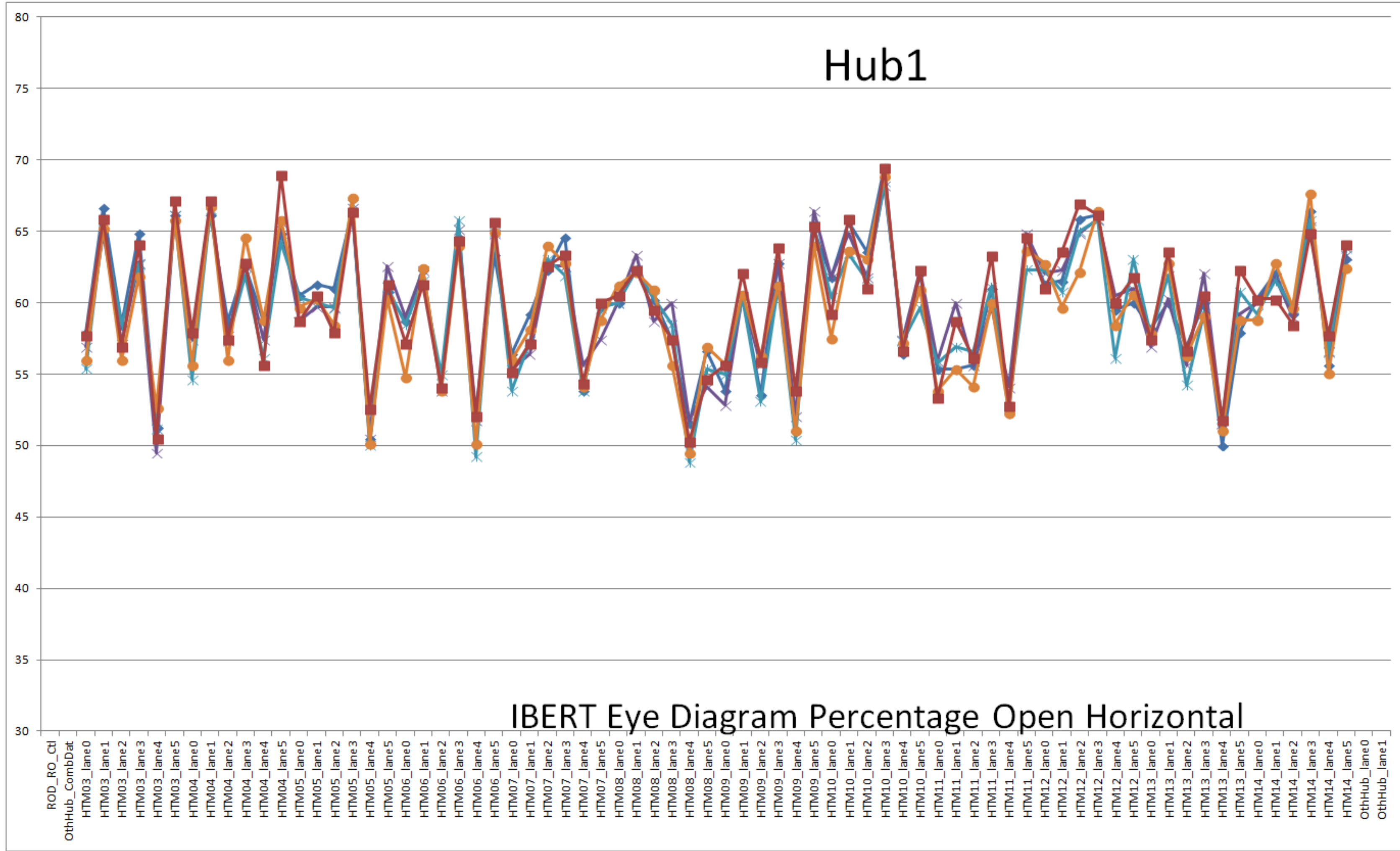
**Hub2:** SN04,05,06,07 or 08  
FW: IBERT+IPbus  
rev 12-Sep-2018  
or 06-SNov2018

**HTM3-14:**  
S/N 9,6,1,7,4,8,  
5,11,10,12,3,13  
FW: IBERT+IPbus  
rev 07-Sep-2018

# Hub1

IBERT  
@6.4Gbps  
PRBS-31

DFE OFF  
Equalizer OFF



- H% HUB1 SN04 05:06-Nov-2018\_avg noDFE&EqOFF
- H% HUB1 SN05 02:03-Nov-2018\_avg noDFE&EqOFF
- H% HUB1 SN06 26:27-Oct-2018\_avg noDFE&EqOFF
- H% HUB1 SN07 23:26-Oct-2018\_avg noDFE&EqOFF
- H% HUB1 SN08 16:18-Nov-2018\_avg noDFE&EqOFF
- H%
- H%

**Hub1:** SN04,05,06,07 or 08  
FW: IBERT+IPbus  
rev 12-Sep-2018  
or 06-SNov2018

**Hub2:** SN04,05,06,07 or 08  
FW: IBERT+IPbus  
rev 12-Sep-2018  
or 06-SNov2018

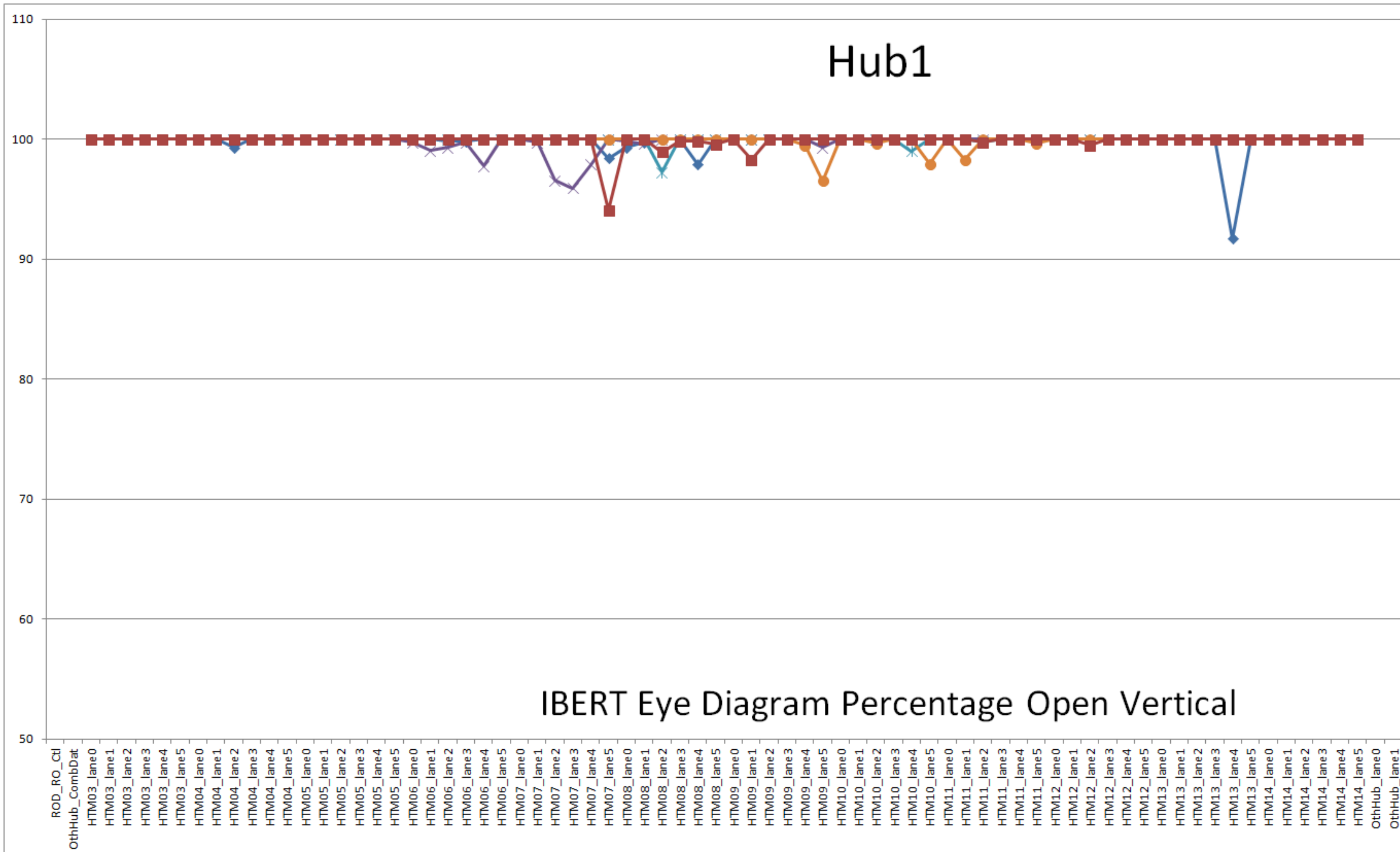
**HTM3-14:**  
S/N 9,6,1,7,4,8,  
5,11,10,12,3,13  
FW: IBERT+IPbus  
rev 07-Sep-2018

IBERT Eye Diagram Percentage Open Horizontal

# Hub1

IBERT  
@6.4Gbps  
PRBS-31

DFE OFF  
Equalizer OFF



- V% HUB1 SN04 05:06-Nov-2018\_avg noDFE&EqOFF
- V% HUB1 SN05 02:03-Nov-2018\_avg noDFE&EqOFF
- V% HUB1 SN06 26:27-Oct-2018\_avg noDFE&EqOFF
- V% HUB1 SN07 23:26-Oct-2018\_avg noDFE&EqOFF
- V% HUB1 SN08 16:18-Nov-2018\_avg noDFE&EqOFF
- V%
- V%

## IBERT Eye Diagram Percentage Open Vertical

**Hub1:** SN04,05,06,07 or 08  
FW: IBERT+IPbus  
rev 12-Sep-2018  
or 06-SNov2018

**Hub2:** SN04,05,06,07 or 08  
FW: IBERT+IPbus  
rev 12-Sep-2018  
or 06-SNov2018

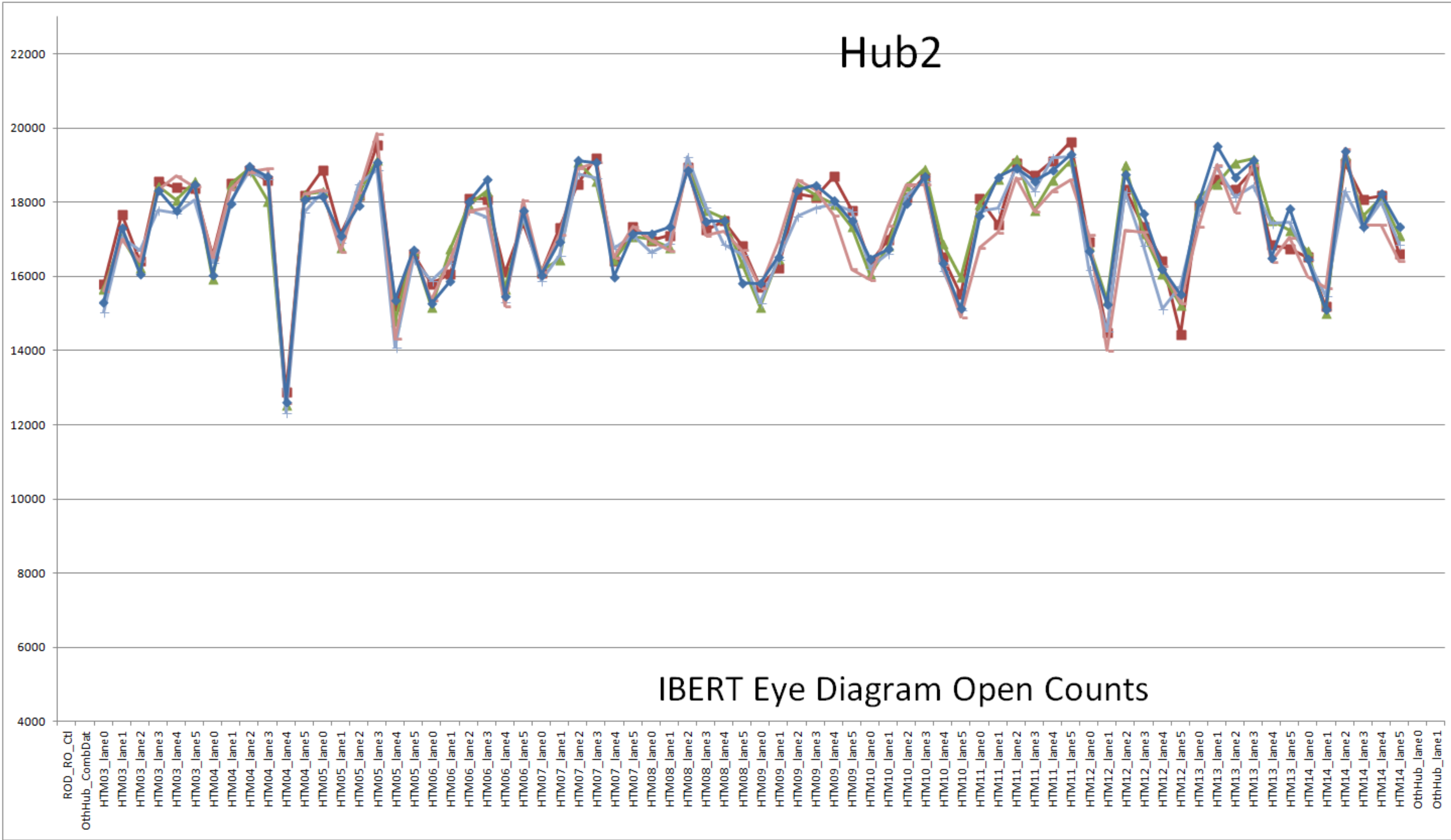
**HTM3-14:**  
S/N 9,6,1,7,4,8,  
5,11,10,12,3.13  
FW: IBERT+IPbus  
rev 07-Sep-2018



# Hub2

IBERT  
@6.4Gbps  
PRBS-31

DFE OFF  
Equalizer OFF



- O HUB2 SN04 02:03-Nov-2018\_avg noDFE&EqOFF
- ▲ O UB2 SN05 05:06-Nov-2018\_avg noDFE&EqOFF
- + O HUB2 SN06 23:26-Oct-2018\_avg noDFE&EqOFF
- O HUB2 SN07 26:27-Oct-2018\_avg noDFE&EqOFF
- ◆ O HUB2 SN08 09:10-Nov-2018\_avg noDFE&EqOFF
- × O
- \* O

**Hub1:** SN04,05,06,07 or 08  
FW: IBERT+IPbus  
rev 12-Sep-2018  
or 06-SNov2018

**Hub2:** SN04,05,06,07 or 08  
FW: IBERT+IPbus  
rev 12-Sep-2018  
or 06-SNov2018

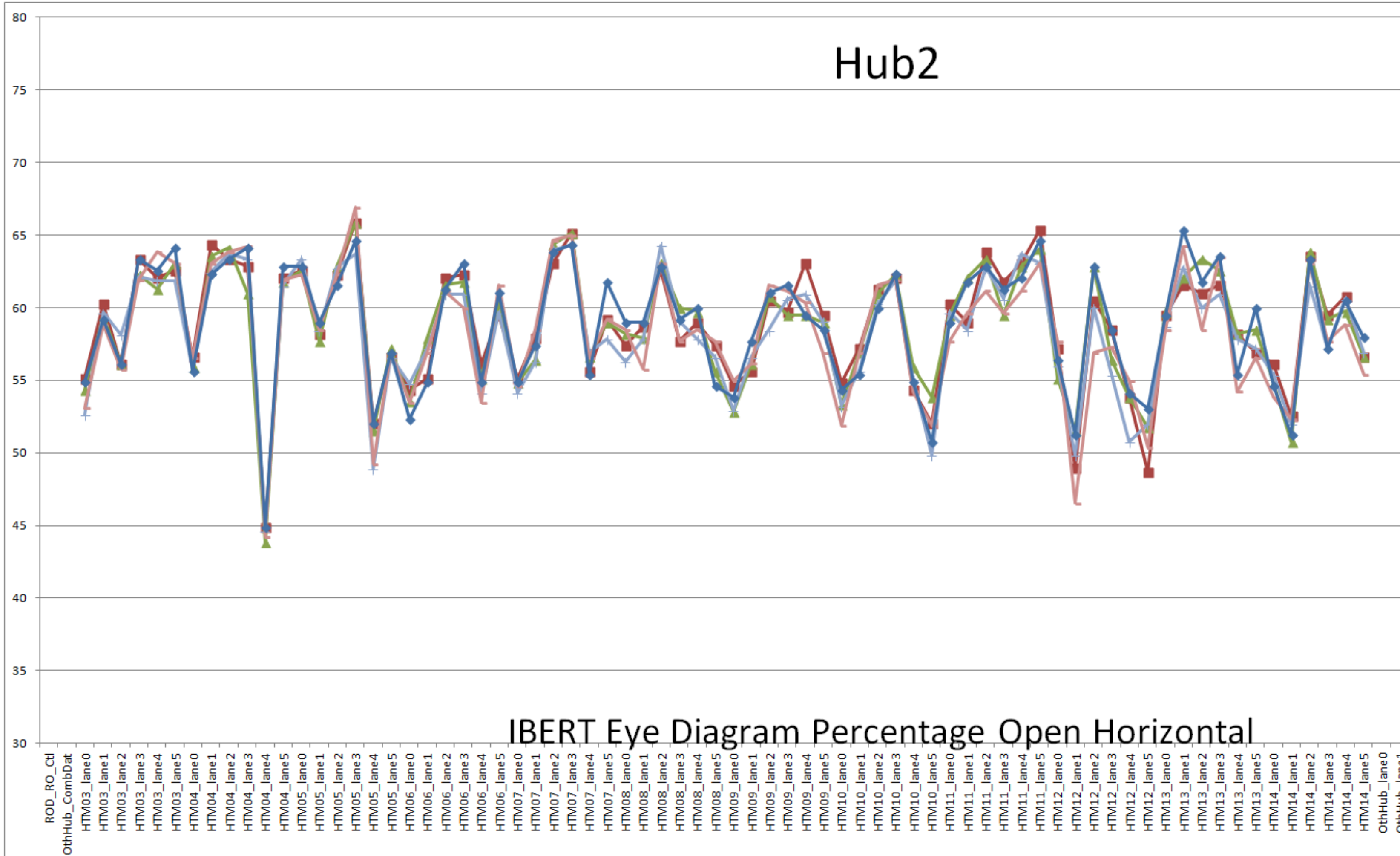
**HTM 3-14:**  
S/N 9,6,1,7,4,8,  
5,11,10,12,3.13  
FW: IBERT+IPbus  
rev 07-Sep-2018

## IBERT Eye Diagram Open Counts

# Hub2

IBERT  
@6.4Gbps  
PRBS-31

DFE OFF  
Equalizer OFF



- H% HUB2 SN04 02:03-Nov-2018\_avg noDFE&EqOFF
- ▲ H% UB2 SN05 05:06-Nov-2018\_avg noDFE&EqOFF
- + H% HUB2 SN06 23:26-Oct-2018\_avg noDFE&EqOFF
- H% HUB2 SN07 26:27-Oct-2018\_avg noDFE&EqOFF
- ◆ H% HUB2 SN08 09:10-Nov-2018\_avg noDFE&EqOFF
- × H%
- \* H%

**Hub1:** SN04,05,06,07 or 08  
FW: IBERT+IPbus  
rev 12-Sep-2018  
or 06-SNov2018

**Hub2:** SN04,05,06,07 or 08  
FW: IBERT+IPbus  
rev 12-Sep-2018  
or 06-SNov2018

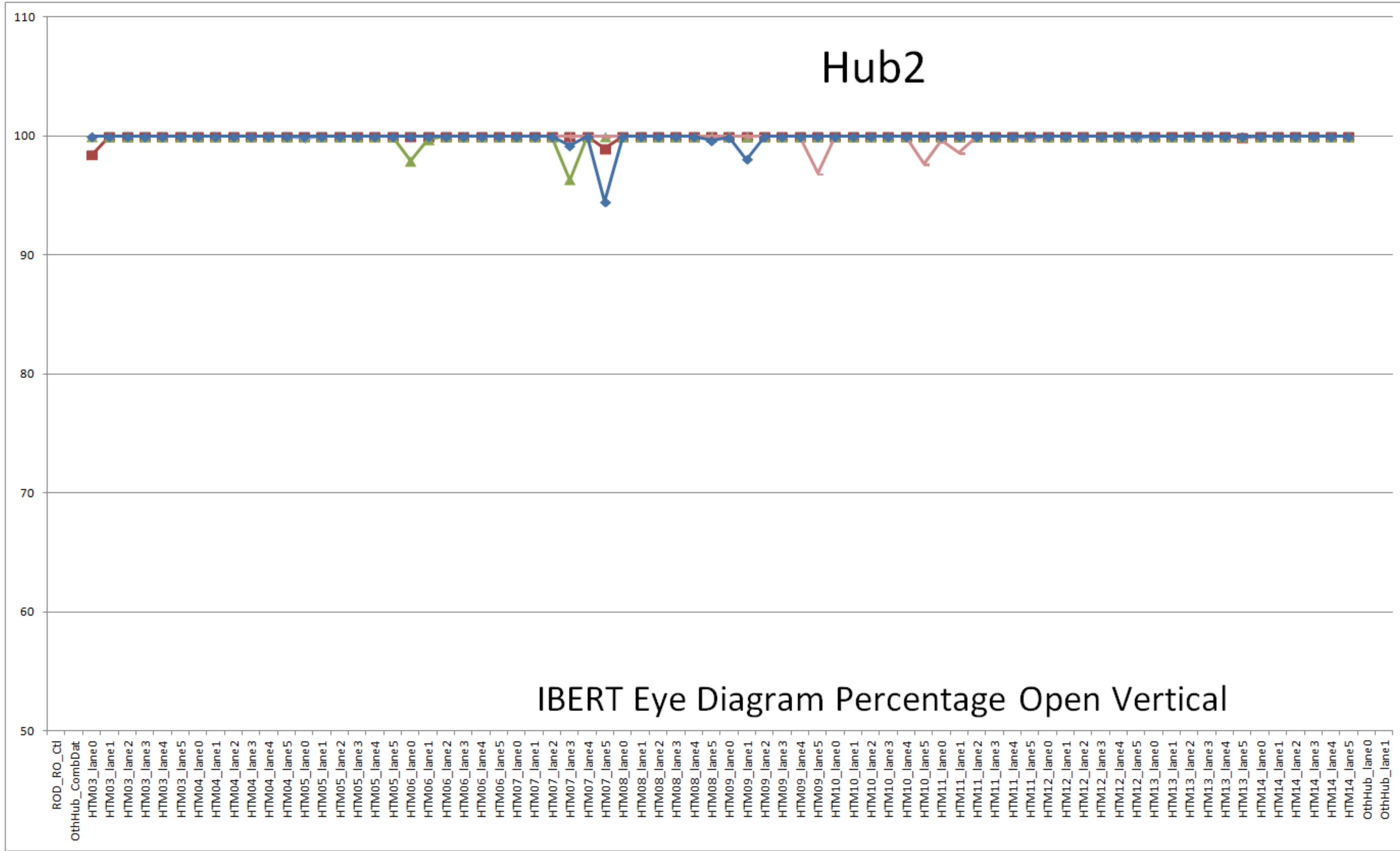
**HTM3-14:**  
S/N 9,6,1,7,4,8,  
5,11,10,12,3.13  
FW: IBERT+IPbus  
rev 07-Sep-2018

IBERT Eye Diagram Percentage Open Horizontal

# Hub2

IBERT  
@6.4Gbps  
PRBS-31

DFE OFF  
Equalizer OFF



- V% HUB2 SN04 02:03-Nov-2018\_avg noDFE&EqOFF
- ▲ V% UB2 SN05 05:06-Nov-2018\_avg noDFE&EqOFF
- ◆ V% HUB2 SN06 23:26-Oct-2018\_avg noDFE&EqOFF
- V% HUB2 SN07 26:27-Oct-2018\_avg noDFE&EqOFF
- ◆ V% HUB2 SN08 09:10-Nov-2018\_avg noDFE&EqOFF
- ✕ V%
- ✱ V%

**Hub1:** SN04,05,06,07 or 08  
FW: IBERT+IPbus  
rev 12-Sep-2018  
or 06-SNov2018

**Hub2:** SN04,05,06,07 or 08  
FW: IBERT+IPbus  
rev 12-Sep-2018  
or 06-SNov2018

**HTM3-14:**  
S/N 9,6,1,7,4,8,  
5,11,10,12,3,13  
FW: IBERT+IPbus  
rev 07-Sep-2018

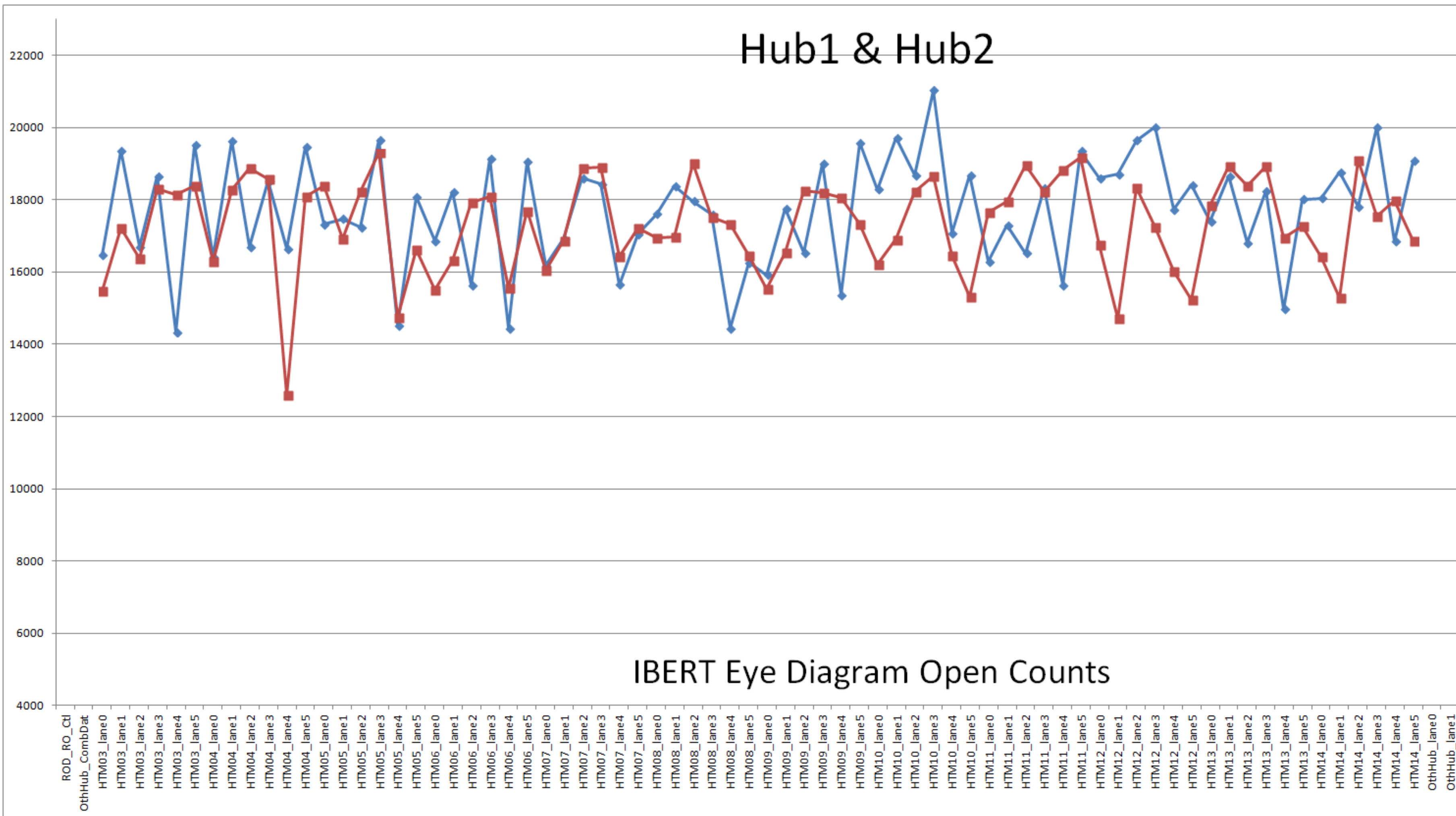
## IBERT Eye Diagram Percentage Open Vertical



# Hub1 & Hub2

IBERT  
@6.4Gbps  
PRBS-31

DFE OFF  
Equalizer OFF



◆ O HUB1 SN04:SN08 avg noDFE&EqOFF  
■ O HUB2 SN04:SN08 avg noDFE&EqOFF

**Hub1:** SN04,05,06,07 or 08  
 FW: IBERT+IPbus  
 rev 12-Sep-2018  
 or 06-SNov2018

**Hub2:** SN04,05,06,07 or 08  
 FW: IBERT+IPbus  
 rev 12-Sep-2018  
 or 06-SNov2018

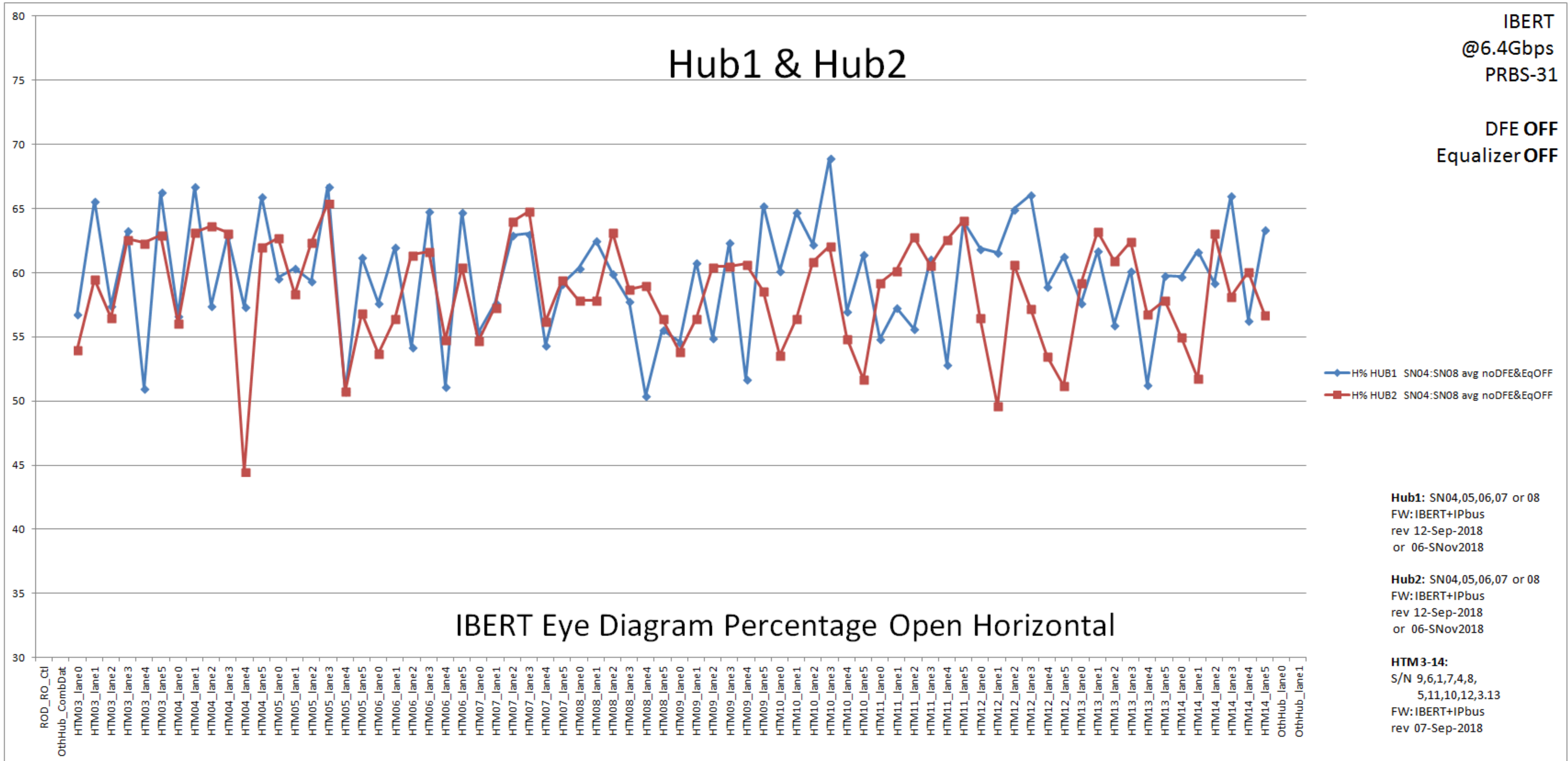
**HTM3-14:**  
 S/N 9,6,1,7,4,8,  
           5,11,10,12,3.13  
 FW: IBERT+IPbus  
 rev 07-Sep-2018

# IBERT Eye Diagram Open Counts

# Hub1 & Hub2

IBERT  
@6.4Gbps  
PRBS-31

DFE OFF  
Equalizer OFF



## IBERT Eye Diagram Percentage Open Horizontal

**Hub1:** SN04,05,06,07 or 08  
FW: IBERT+IPbus  
rev 12-Sep-2018  
or 06-SNov2018

**Hub2:** SN04,05,06,07 or 08  
FW: IBERT+IPbus  
rev 12-Sep-2018  
or 06-SNov2018

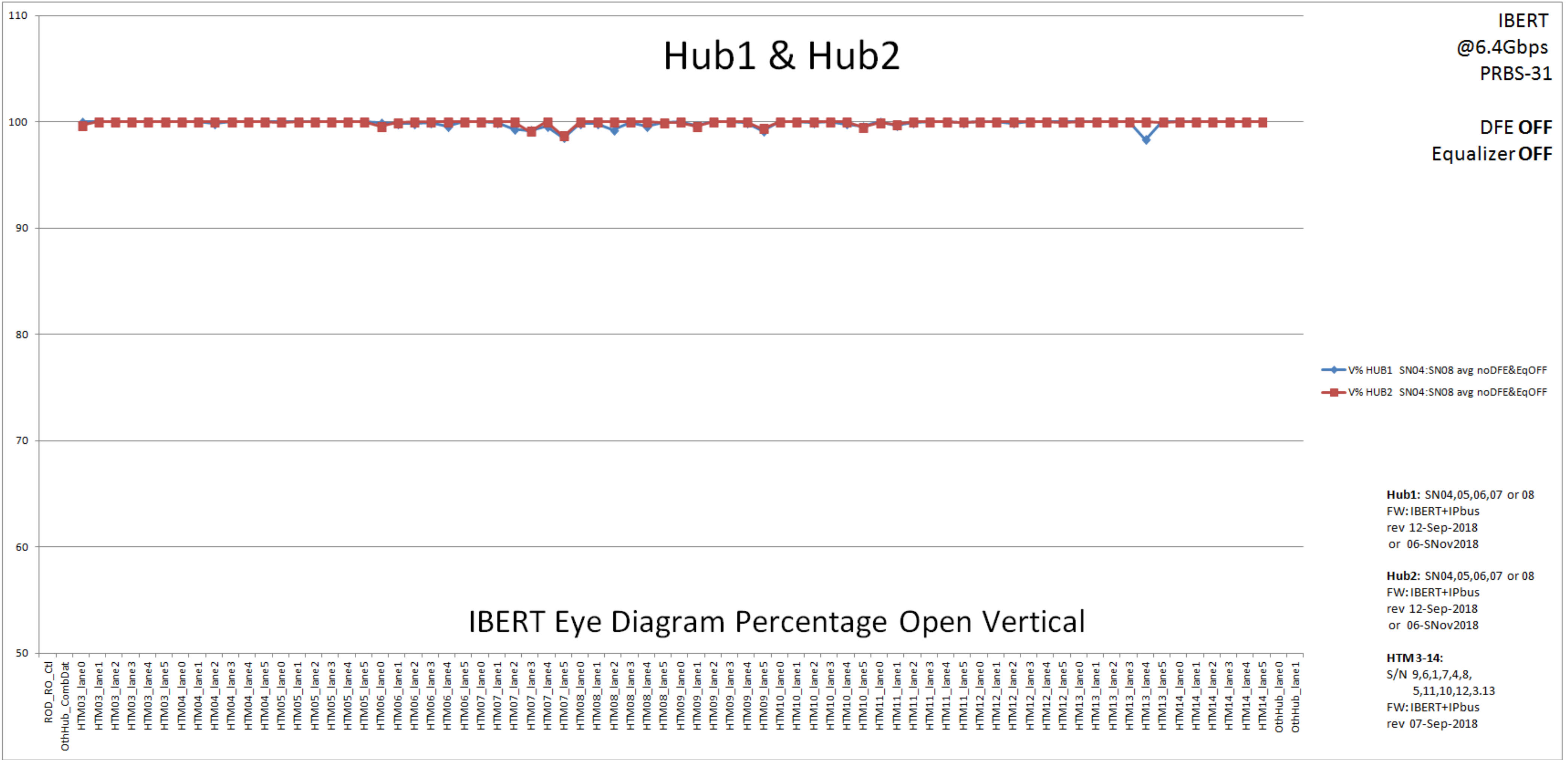
**HTM 3-14:**  
S/N 9,6,1,7,4,8,  
5,11,10,12,3,13  
FW: IBERT+IPbus  
rev 07-Sep-2018



# Hub1 & Hub2

IBERT  
@6.4Gbps  
PRBS-31

DFE OFF  
Equalizer OFF



## IBERT Eye Diagram Percentage Open Vertical

**Hub1:** SN04,05,06,07 or 08  
FW: IBERT+IPbus  
rev 12-Sep-2018  
or 06-SNov2018

**Hub2:** SN04,05,06,07 or 08  
FW: IBERT+IPbus  
rev 12-Sep-2018  
or 06-SNov2018

**HTM3-14:**  
S/N 9,6,1,7,4,8,  
5,11,10,12,3,13  
FW: IBERT+IPbus  
rev 07-Sep-2018