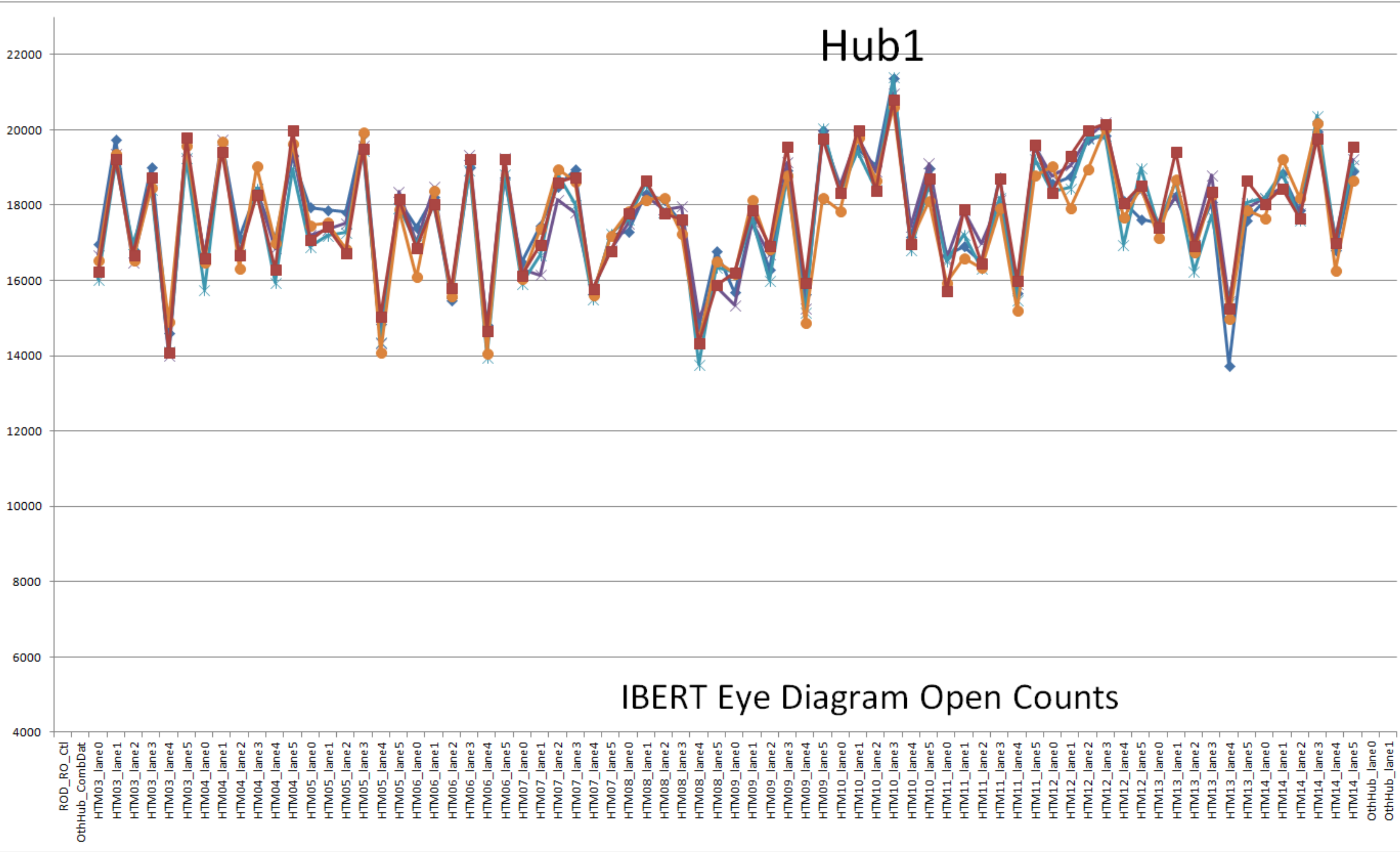


Hub1

IBERT
@6.4Gbps
PRBS-31

DFE OFF
Equalizer OFF



- ◆ O HUB1 SN04 05:06-Nov-2018_avg noDFE&EqOFF
- ✕ O HUB1 SN05 02:03-Nov-2018_avg noDFE&EqOFF
- * O HUB1 SN06 26:27-Oct-2018_avg noDFE&EqOFF
- O HUB1 SN07 23:26-Oct-2018_avg noDFE&EqOFF
- O HUB1 SN08 16:18-Nov-2018_avg noDFE&EqOFF
- ▲ O
- + O

Hub1: SN04,05,06,07 or 08
FW: IBERT+IPbus
rev 12-Sep-2018
or 06-SNov2018

Hub2: SN04,05,06,07 or 08
FW: IBERT+IPbus
rev 12-Sep-2018
or 06-SNov2018

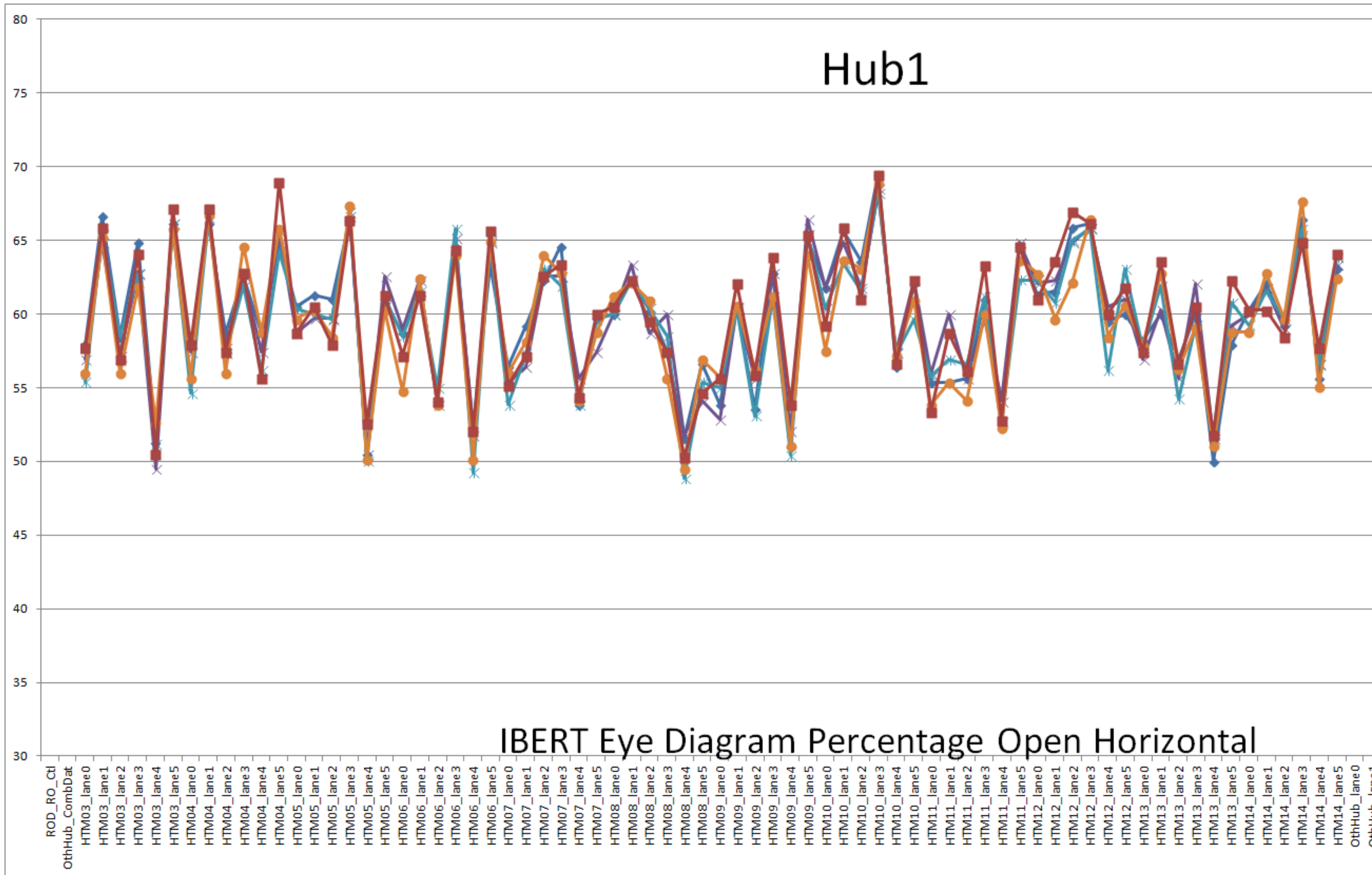
HTM3-14:
S/N 9,6,1,7,4,8,
5,11,10,12,3,13
FW: IBERT+IPbus
rev 07-Sep-2018

IBERT Eye Diagram Open Counts

Hub1

IBERT
@6.4Gbps
PRBS-31

DFE OFF
Equalizer OFF



- H% HUB1 SN04 05:06-Nov-2018_avg noDFE&EqOFF
- H% HUB1 SN05 02:03-Nov-2018_avg noDFE&EqOFF
- H% HUB1 SN06 26:27-Oct-2018_avg noDFE&EqOFF
- H% HUB1 SN07 23:26-Oct-2018_avg noDFE&EqOFF
- H% HUB1 SN08 16:18-Nov-2018_avg noDFE&EqOFF
- H%
- H%

Hub1: SN04,05,06,07 or 08
FW: IBERT+IPbus
rev 12-Sep-2018
or 06-SNov2018

Hub2: SN04,05,06,07 or 08
FW: IBERT+IPbus
rev 12-Sep-2018
or 06-SNov2018

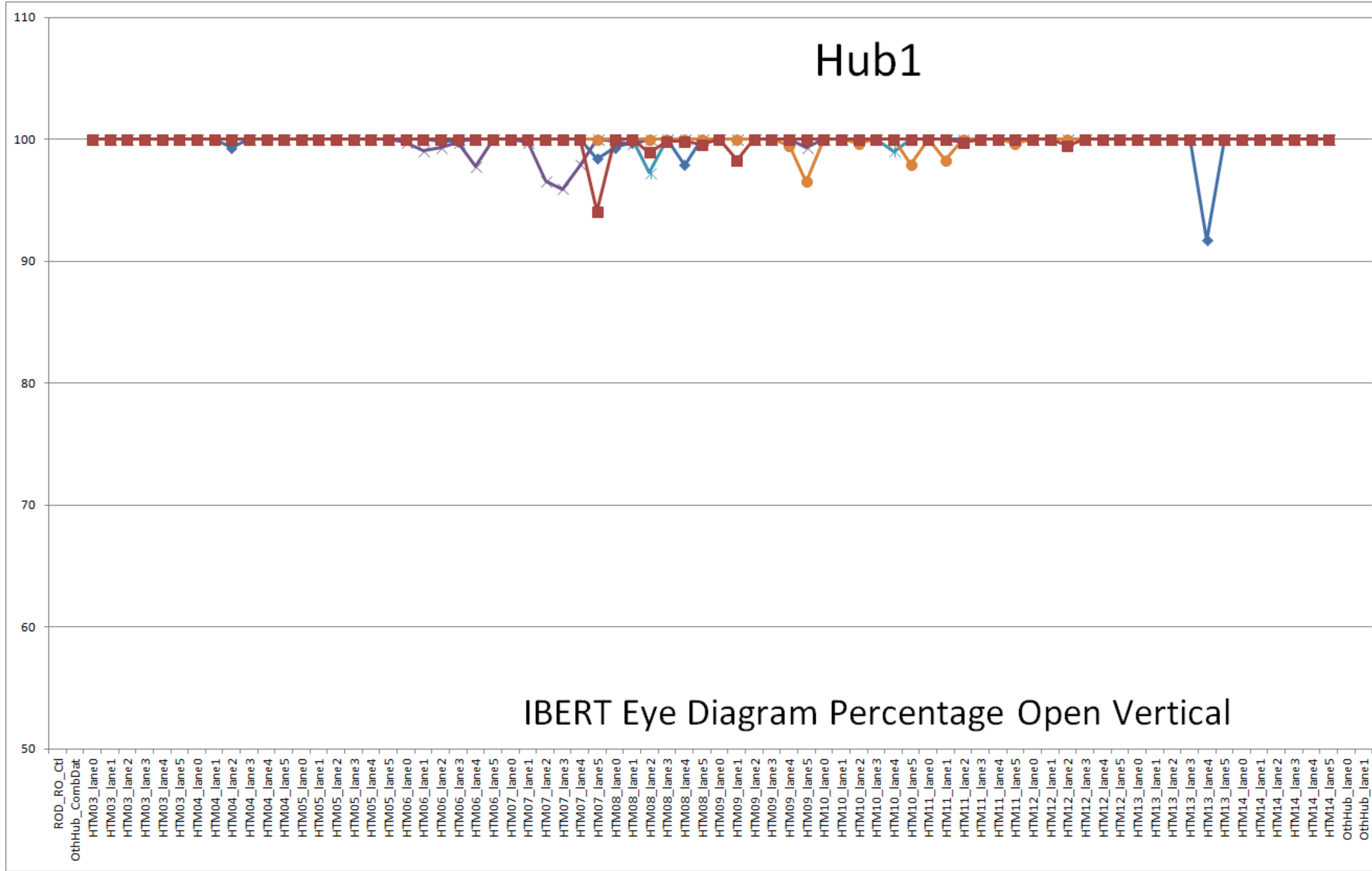
HTM3-14:
S/N 9,6,1,7,4,8,
5,11,10,12,3,13
FW: IBERT+IPbus
rev 07-Sep-2018

IBERT Eye Diagram Percentage Open Horizontal

Hub1

IBERT
@6.4Gbps
PRBS-31

DFE OFF
Equalizer OFF



- ◆ V% HUB1 SN04 05:06-Nov-2018_avg noDFE&EqOFF
- ✕ V% HUB1 SN05 02:03-Nov-2018_avg noDFE&EqOFF
- ✱ V% HUB1 SN06 26:27-Oct-2018_avg noDFE&EqOFF
- V% HUB1 SN07 23:26-Oct-2018_avg noDFE&EqOFF
- V% HUB1 SN08 16:18-Nov-2018_avg noDFE&EqOFF
- ▲ V%
- + V%

Hub1: SN04,05,06,07 or 08
FW: IBERT+IPbus
rev 12-Sep-2018
or 06-SNov2018

Hub2: SN04,05,06,07 or 08
FW: IBERT+IPbus
rev 12-Sep-2018
or 06-SNov2018

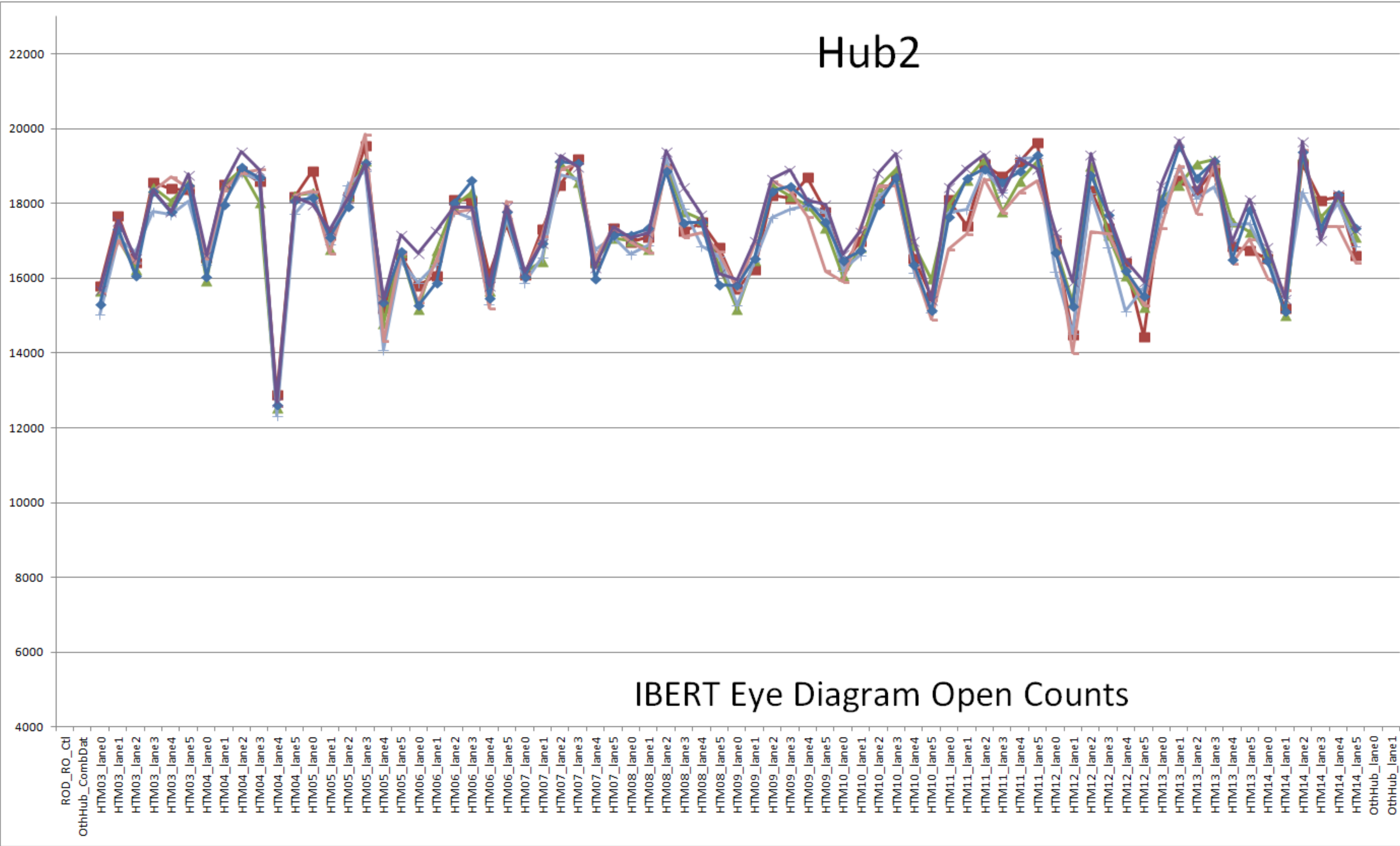
HTM3-14:
S/N 9,6,1,7,4,8,
5,11,10,12,3,13
FW: IBERT+IPbus
rev 07-Sep-2018

IBERT Eye Diagram Percentage Open Vertical

Hub2

IBERT
@6.4Gbps
PRBS-31

DFE OFF
Equalizer OFF



- O HUB2 SN04 02:03-Nov-2018_avg noDFE&EqOFF
- ▲ O HUB2 SN05 05:06-Nov-2018_avg noDFE&EqOFF
- + O HUB2 SN06 23:26-Oct-2018_avg noDFE&EqOFF
- O HUB2 SN07 26:27-Oct-2018_avg noDFE&EqOFF
- ◆ O HUB2 SN08 09:10-Nov-2018_avg noDFE&EqOFF
- ✕ O HUB2 SN09 10:11-Dec-2018_avg noDFE&EqOFF
- ✱ O

Hub1: SN04,05,06,07 or 08
FW: IBERT+IPbus
rev 12-Sep-2018
or 06-SNov2018

Hub2: SN04,05,06,07 or 08
FW: IBERT+IPbus
rev 12-Sep-2018
or 06-SNov2018

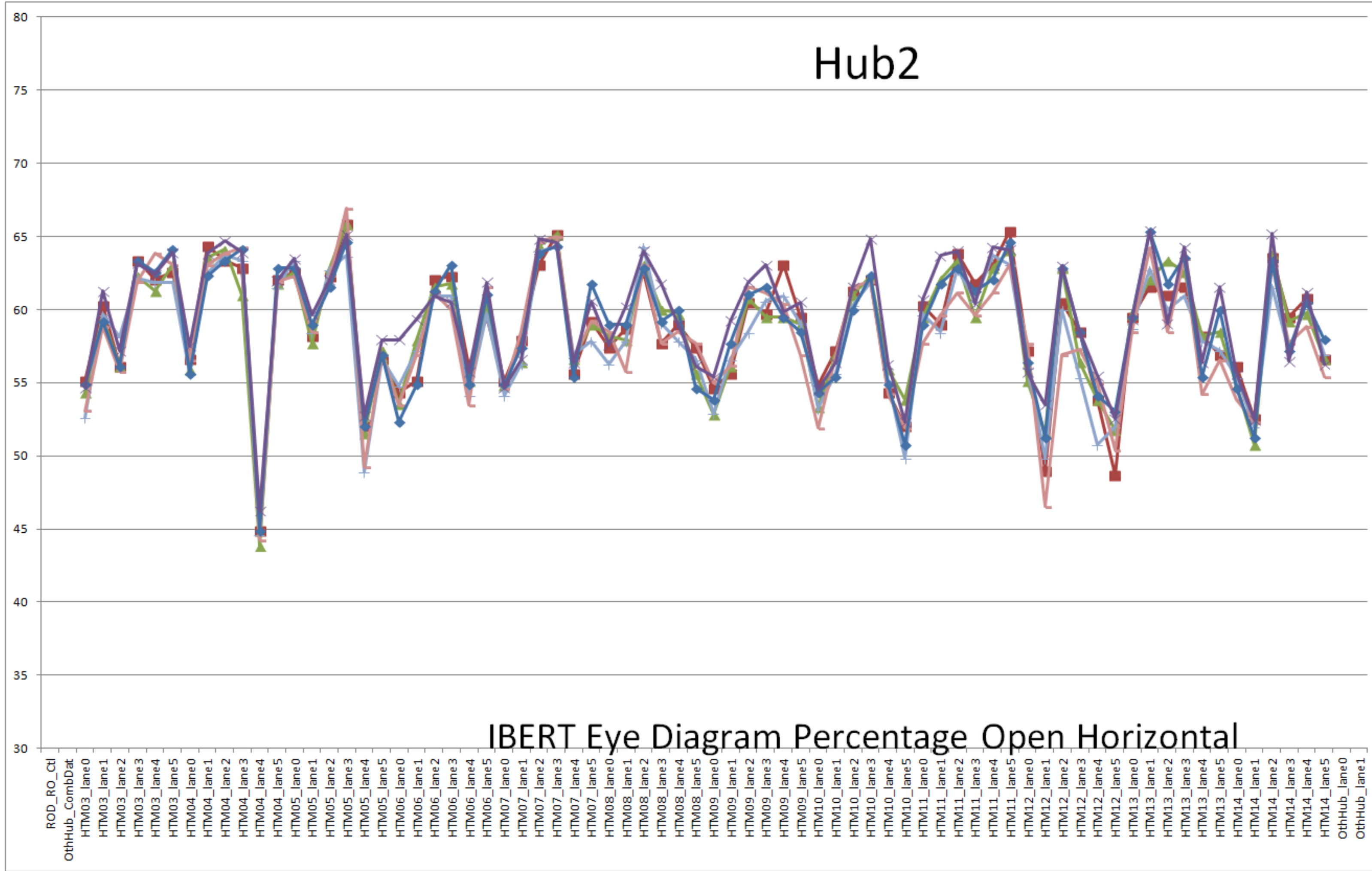
HTM3-14:
For Hub2 SN04:08
S/N 9,6,1,7,4,8,
5,11,10,12,3,13
For Hub2 SN9 HTM6 was S/N 7
FW: IBERT+IPbus
rev 07-Sep-2018

IBERT Eye Diagram Open Counts

Hub2

IBERT
@6.4Gbps
PRBS-31

DFE OFF
Equalizer OFF



- H% HUB2 SN04 02:03-Nov-2018_avg noDFE&EqOFF
- ▲ H% HUB2 SN05 05:06-Nov-2018_avg noDFE&EqOFF
- + H% HUB2 SN06 23:26-Oct-2018_avg noDFE&EqOFF
- H% HUB2 SN07 26:27-Oct-2018_avg noDFE&EqOFF
- ◆ H% HUB2 SN08 09:10-Nov-2018_avg noDFE&EqOFF
- ✕ H% HUB2 SN09 10:11-Dec-2018_avg noDFE&EqOFF
- ✕ H%

Hub1: SN04,05,06,07 or 08
FW: IBERT+IPbus
rev 12-Sep-2018
or 06-SNov2018

Hub2: SN04,05,06,07 or 08
FW: IBERT+IPbus
rev 12-Sep-2018
or 06-SNov2018

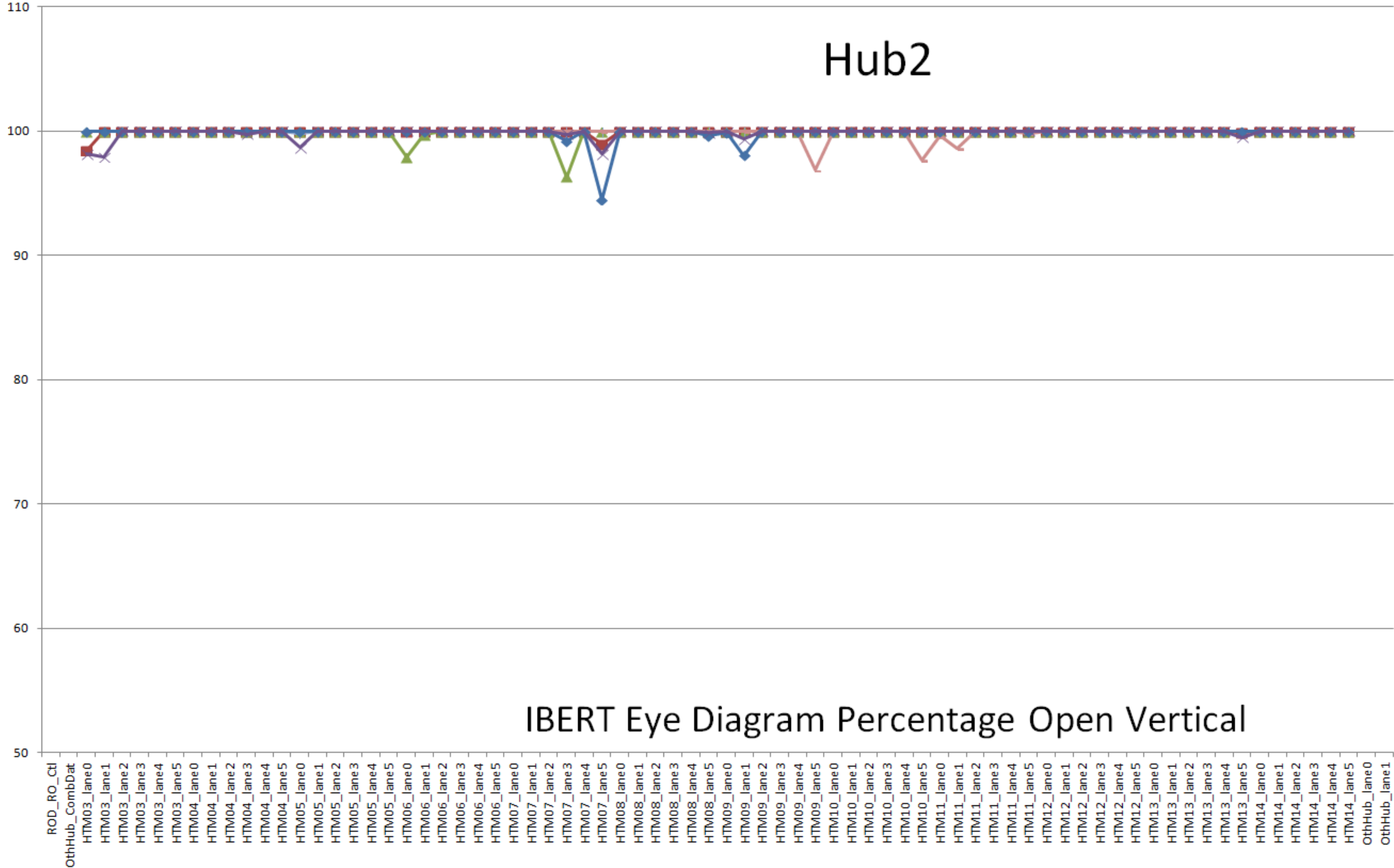
HTM3-14:
For Hub2 SN04:08
S/N 9,6,1,7,4,8,
5,11,10,12,3,13
For Hub2 SN9 HTM6 was S/N 7
FW: IBERT+IPbus
rev 07-Sep-2018

IBERT Eye Diagram Percentage Open Horizontal

Hub2

IBERT
@6.4Gbps
PRBS-31

DFE OFF
Equalizer OFF



- V% HUB2 SN04 02:03-Nov-2018_avg noDFE&EqOFF
- V% HUB2 SN05 05:06-Nov-2018_avg noDFE&EqOFF
- V% HUB2 SN06 23:26-Oct-2018_avg noDFE&EqOFF
- V% HUB2 SN07 26:27-Oct-2018_avg noDFE&EqOFF
- V% HUB2 SN08 09:10-Nov-2018_avg noDFE&EqOFF
- V% HUB2 SN09 10:11-Dec-2018_avg noDFE&EqOFF
- V%

Hub1: SN04,05,06,07 or 08
FW: IBERT+IPbus
rev 12-Sep-2018
or 06-SNov2018

Hub2: SN04,05,06,07 or 08
FW: IBERT+IPbus
rev 12-Sep-2018
or 06-SNov2018

HTM3-14:
For Hub2 SN04:08
S/N 9,6,1,7,4,8,
5,11,10,12,3,13
For Hub2 SN9 HTM6 was S/N 7
FW: IBERT+IPbus
rev 07-Sep-2018

IBERT Eye Diagram Percentage Open Vertical