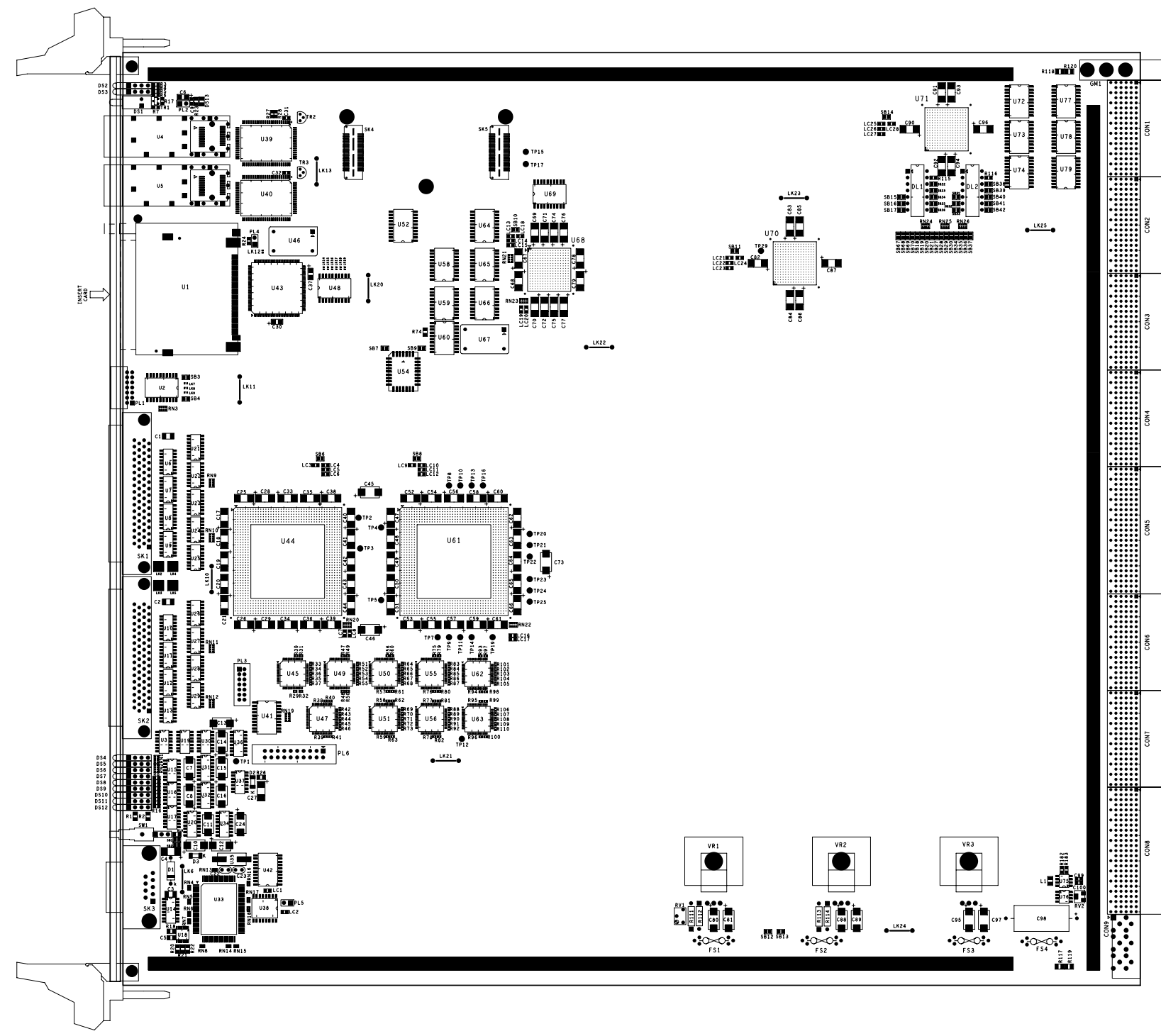


BOARD VIEWED ON 'A' FACE



- ASSEMBLY NOTES**
- SOLDER PASTE MASTERS AVAILABLE FOR ASSEMBLY OF SURFACE MOUNT COMPONENTS.  
 TOP SOLDER PASTE - PC3203M/S S FACE  
 BOTTOM SOLDER PASTE - PC3203M/S T FACE  
 BOTTOM ASSEMBLY DRG. AVAILABLE - A1-TE-0073-068-02-E
- 1 - ENSURE CORRECT ORIENTATION OF COMPONENTS.
  - 2 - CHECK FULL PART NUMBERS OF FPGAs U44, U61, U68, U70 AND U71 BEFORE ASSEMBLY.
  - 3 - MOUNT GROUND BARS LK8,10,11,13,20-25 AS HIGH OFF THE BOARD AS POSSIBLE.
  - 4 - ASSEMBLE U4 AND U5 BY SOLDERING THE CONNECTOR (TYCO 1367073-1) FIRST THEN ADDING THE CAGE (MOLEX 73927-0009) AFTER.
  - 5 - MOUNT FUSES FS2-FS4 IN OUTERMOST HOLES. DO NOT ASSEMBLE FS1.
  - 6 - ASSEMBLE VR1-VR3 WITH HEATSINKS DETAILED ON BOM.
  - 7 - ATTACH ADHESIVE HEATSINKS TO U39 AND U49. DETAILED ON BOM.
  - 8 - DO NOT ASSEMBLE CAPACITORS C1 AND C2.

E	20-09-2006	TE294	D. J. BECKETT	D. J. BALLARD	I. BRAUN V. PERERA	
D	20-06-2006	TE293	D. J. BECKETT	D. J. BALLARD	I. BRAUN V. PERERA	
C	02-09-2005	TE258	D. J. BECKETT	D. J. BALLARD	I. BRAUN V. PERERA	
B	13-03-2003	TE222	D. J. BECKETT	D. J. BALLARD	I. BRAUN P. APOSTOLOGLLOU	
A	10-12-2001	- - - - -	D. J. BECKETT	D. J. BALLARD	I. BRAUN P. APOSTOLOGLLOU	
ISSUE	DATE	MOD NO.	DRAWN	CHECKED	APPROVED	STATUS
TOLERANCE UNLESS STATED			FINISH		ORIGINAL SCALE 1:1	
MATERIAL & SPEC			REMOVE ANY BURRS		DO NOT SCALE	
			SURFACE TEXTURE micro m		0 50mm	
			✓ UNLESS STATED			
USED ON ATLAS LEVEL 1 CALORIMETER TRIGGER					© CCLRC 2001	
CCLRC COUNCIL FOR THE CENTRAL LABORATORY RUTHERFORD APPLETON LABORATORY, CHILTON, OXON. OX11 0OX OF THE RESEARCH COUNCILS						
TITLE			PC3203M TOP ASSEMBLY COMMOM MERGER MODULE (CMM)			
A1-TE-0073-068-01-E						

A1-TE-0073-068-01-E