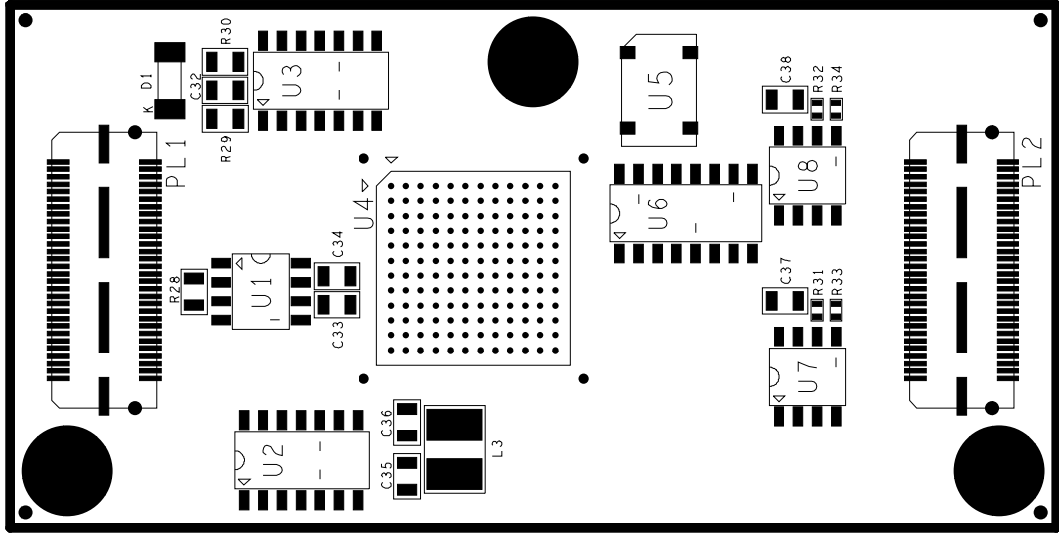


BOARD VIEWED ON 'F' FACE

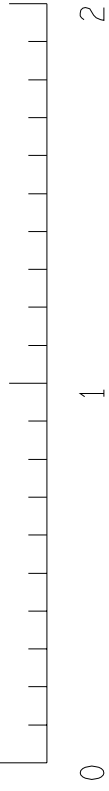


COMPONENT LOCATOR SCALE

### BOTTOM ASSEMBLY NOTES

SOLDER PASTE MASTERS AVAILABLE FOR ASSEMBLY OF SURFACE MOUNT COMPONENTS.  
 TOP SOLDER PASTE - PC3260M/3 'K' FACE  
 BOTTOM SOLDER PASTE - PC3260M/3 'L' FACE  
 TOP ASSEMBLY DRG. AVAILABLE - A3-TE-0097-072-01-C

1. ENSURE CORRECT ORIENTATION OF COMPONENTS.  
 FIT VALUES CLEARLY VISIBLE WHERE POSSIBLE.



COMPONENT LOCATOR SCALE

TOLERANCE UNLESS STATED	FINISH	ORIGINAL SCALE 2:1
MATERIAL & SPEC	REMOVE ANY BURRS SURFACE TEXTURE micro m	DO NOT SCALE
		0 25mm
	UNLESS STATED	

C	19-11-2005	TE282	R.BRUMFITT	M.ROBERTS	V.PERERA	
B	08-04-2005	TE264	R.BRUMFITT	M.ROBERTS	V.PERERA	
A	15-09-2003	- - - -	R.BRUMFITT	M.ROBERTS	W.QIAN	
ISSUE	DATE	MOD NO.	DRAWN	CHECKED	APPROVED	STATUS
USED ON ATLAS CALORIMETER LEVEL 1 TRIGGER			© CCLRC 2003			
CCLRC COUNCIL FOR THE CENTRAL LABORATORY RUTHERFORD APPLETON LABORATORY, CHILTON, OXON. OX11 00X OF THE RESEARCH COUNCILS						
TITLE		PC3260M				
		BOTTOM ASSEMBLY				
		TTC DECODER CARD				
		54/05				
A	3-TE-0097-072-02-C				TOTAL NO. OF SHEETS 2	