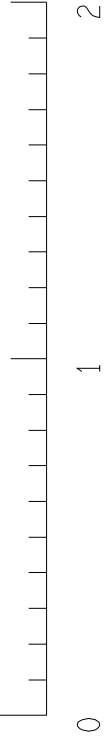
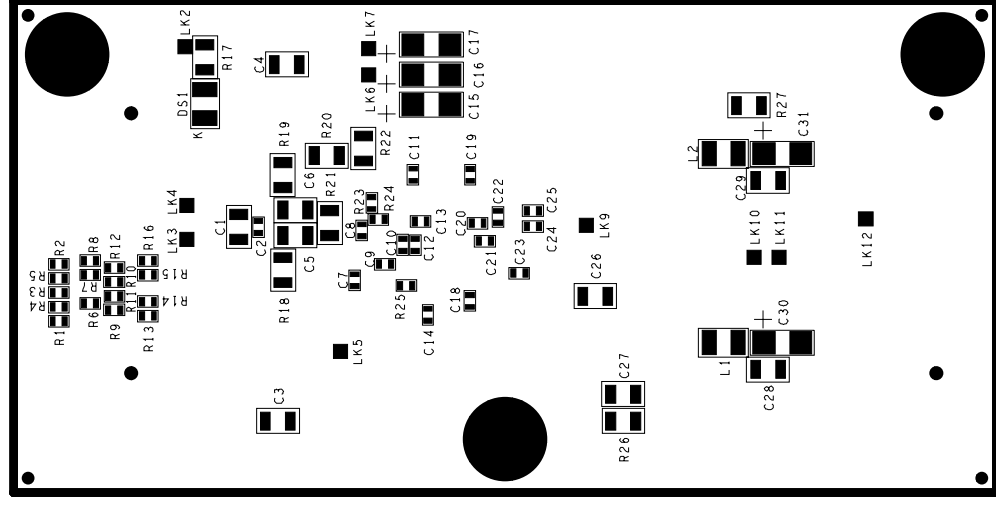


BOARD VIEWED ON 'A' FACE



COMPONENT LOCATOR SCALE

TOP ASSEMBLY NOTES

SOLDER PASTE MASTERS AVAILABLE FOR ASSEMBLY OF SURFACE MOUNT COMPONENTS .
 TOP SOLDER PASTE - PC3260M/3 'K' FACE
 BOTTOM SOLDER PASTE - PC3260M/3 'L' FACE
 BOTTOM ASSEMBLY DRG. AVAILABLE - A3-TE-0097-072-02-C

1. ENSURE CORRECT ORIENTATION OF COMPONENTS .
 FIT VALUES CLEARLY VISIBLE WHERE POSSIBLE .

| | | | | | | |
|---|------------|---------|------------------|------------|-----------|--------|
| C | 19-11-2005 | TE282 | R. BRUMFITT | M. ROBERTS | V. PERERA | |
| B | 08-04-2005 | TE264 | R. BRUMFITT | M. ROBERTS | V. PERERA | |
| A | 15-09-2003 | - - - | R. BRUMFITT | M. ROBERTS | W. O'IAN | |
| ISSUE | DATE | MOD NO. | DRAWN | CHECKED | APPROVED | STATUS |
| USED ON ATLAS CALORIMETER LEVEL 1 TRIGGER | | | © CCLRC 2003 | | | |
| CCLRC COUNCIL FOR THE CENTRAL LABORATORY RUTHERFORD APPLETON LABORATORY, CHILTON, OXON. OX11 00X OF THE RESEARCH COUNCILS | | | | | | |
| TITLE | | | TOP ASSEMBLY | | | |
| PC3260M | | | TTC DECODER CARD | | | |
| A 3 - T E - 0 0 9 7 - 0 7 2 - 0 1 - C | | | 54/05 | | | |

| | | |
|-------------------------|---|----------------------|
| TOLERANCE UNLESS STATED | FINISH | ORIGINAL SCALE 2 : 1 |
| MATERIAL & SPEC | REMOVE ANY BURRS SURFACE TEXTURE micro m | DO NOT SCALE |
| | UNLESS STATED | 0 25mm |