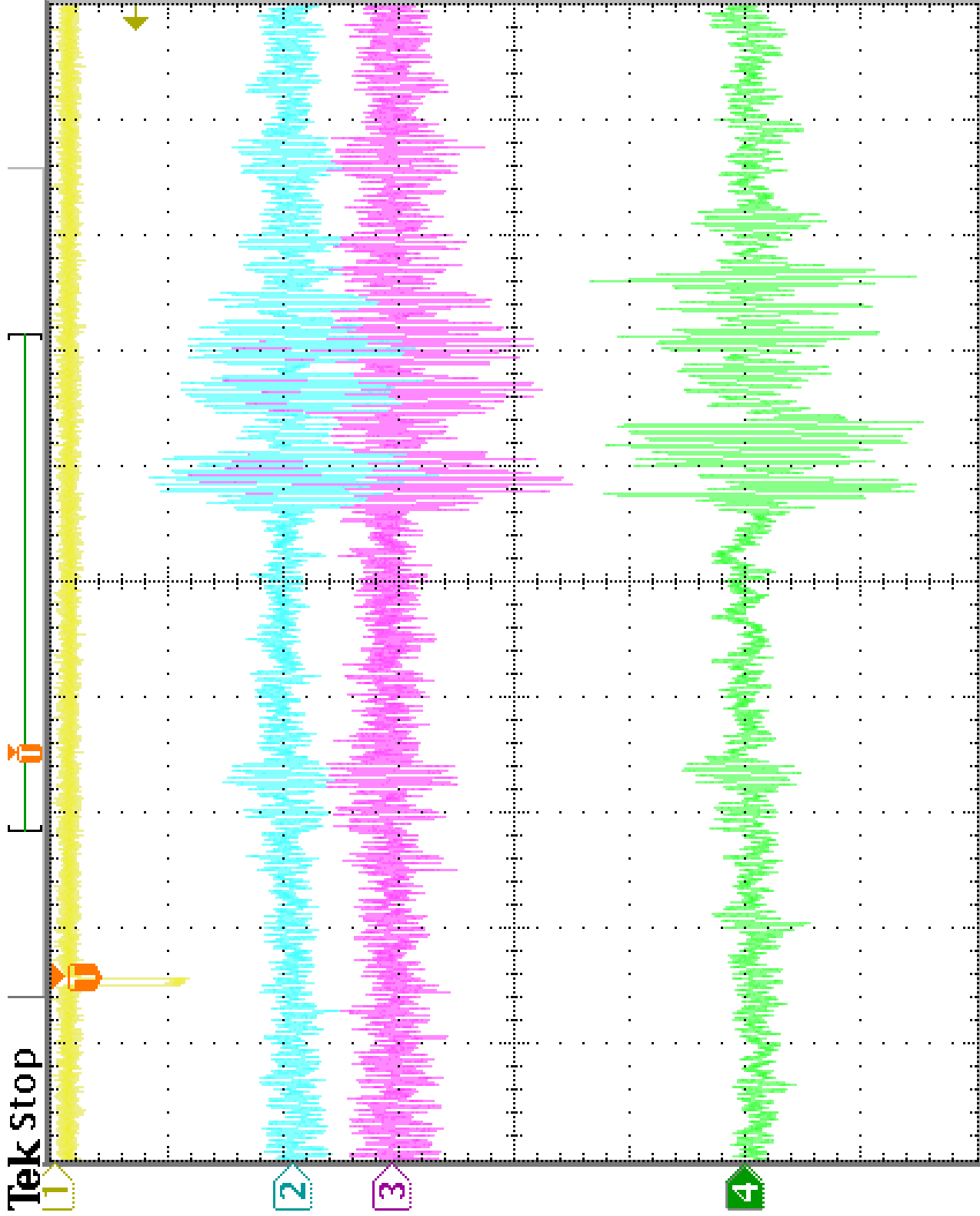


Tek Stop



Ch1 1.00 V  $\Omega$  Ch2 50.0 mV  $\Omega$  M 2.00  $\mu$ s A Ch1  $\mathcal{F}$  - 700 mV

Ch3 50.0 mV  $\Omega$  Ch4 50.0 mV  $\wedge$

15.80 %



12 Sep 2002  
14:56:41