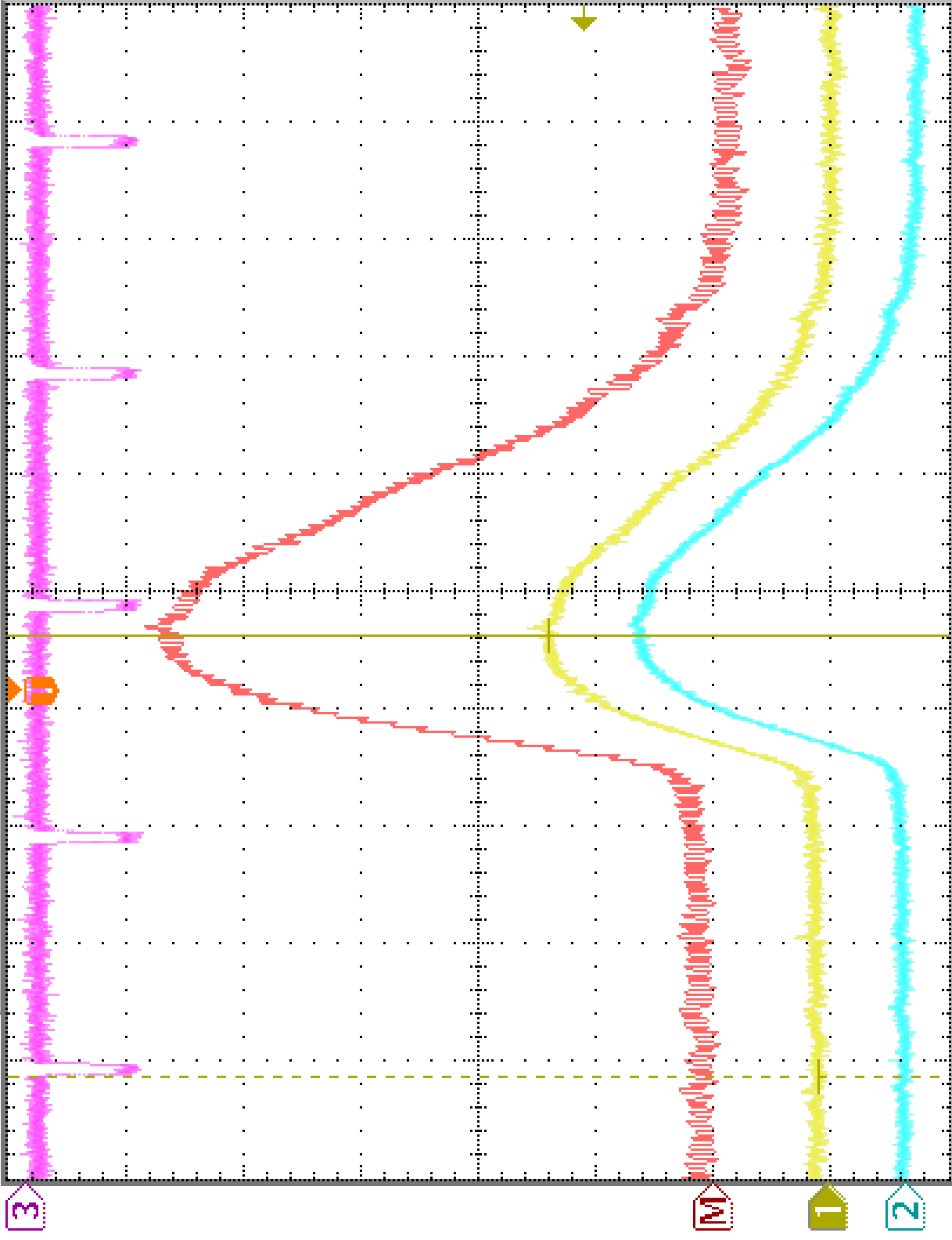


Tek Stop



$\Delta$ : 460mV  
 $@$ : 476mV  
 $\Delta$ : 752ns  
 $@$ : 92.0ns

3

M

1

2

Ch1 200mV  $\Omega_{B_{in}}$  Ch2 + 200mV  $\Omega_{B_{in}}$  M 200ns A Ch1  $\mathcal{F}$  416mV

Ch3 1.00 V  $\Omega$

Math 200mV 200ns 41.60 %

20 Sep 2001  
 22:50:52