

The Muon System of the Run II DØ Detector

V.M. Abazov^g, B.S. Acharya^f, G.D. Alexeev^g, G. Alkhozov^k,
 V.A. Anosov^g, B. Baldinⁿ, S. Banerjee^f, O. Bardon^r,
 J.F. Bartlettⁿ, M.A. Baturitsky^{g,u}, D. Beutel^o, V.A. Bezzubov^j,
 V. Bodyaginⁱ, J.M. Butler^q, H. Ceaseⁿ, E. Chiⁿ, D. Denisovⁿ⁽¹⁾,
 S.P. Denisov^j, H.T. Diehlⁿ, S. Doulas^r, S.R. Dugad^f,
 O.V. Dvornikov^{g,v}, A. Dyshkant^o, M. Eads^o, A. Evdokimov^h,
 V.N. Evdokimov^j, T. Fitzpatrickⁿ, M. Fortner^o, V. Gavrilov^h,
 Y. Gershtein^m, V. Golovtsov^k, R. Goodwinⁿ,
 Yu.A. Gornushkin^g, D.R. Greenⁿ, A. Gupta^f, S.N. Gurzhiev^j,
 G. Gutierrezⁿ, H. Haggertyⁿ, P. Hanlet^r, S. Hansenⁿ, E. Hazen^q,
 D. Hedin^o, B. Hoeneisen^e, A.S. Itoⁿ, R. Jayanti^l, K. Johns^l,
 N. Jouravlev^g, A.M. Kalinin^g, S.D. Kalmani^f, Y.N. Kharzheev^g,
 N. Kirsch^r, E.V. Komissarov^g, V.M. Korablev^j, A. Kostitsky^j,
 A.V. Kozelov^j, M. Kozlovskyⁿ, N.P. Kravchuk^g,
 M.R. Krishnaswamy^f, N.A. Kuchinsky^g, S. Kuleshov^h,
 A. Kupco^d, M. Larwillⁿ, R. Leitner^b, V.V. Lipaev^j,
 A. Lobodenko^k, M. Lokajicek^d, H.J. Lubatti^t, E. Machado^q,
 M. Maity^q, V.L. Malyshev^g, H.S. Mao^a, M. Marcus^r,
 T. Marshall^p, A.A. Mayorov^j, R. McCroskey^l, Y.P. Merkov^g,
 V.A. Mikhailov^{g,u}, N. Mokhovⁿ, N.K. Mondal^f, P. Nagaraj^f,
 V.S. Narasimham^f, A. Narayanan^l, P. Neustroev^k,
 A.A. Nozdrin^g, B. Oshinowoⁿ, N. Parashar^r, N. Parua^f,
 V.M. Podstavkovⁿ, P. Polozov^h, S.Y. Porokhovoi^g,
 I.K. Prokhorov^g, M.V.S. Rao^f, J. Raskowski^o, L.V. Reddy^f,
 T. Reganⁿ, C. Rotoloⁿ, N.A. Russakovich^g, B.M. Sabirov^g,
 B. Satyanarayana^f, Y. Scheglov^k, A.A. Schukin^j,
 H.C. Shankar^f, A.A. Shishkin^g, D. Shpakov^r, M. Shupe^l,
 V. Simak^c, V. Sirotenkoⁿ, G. Smithⁿ, K. Smolek^c,
 K. Soustruznik^b, A. Stefanikⁿ, J. Steinberg^l, V. Stolin^h,
 D.A. Stoyanova^j, L. Stutteⁿ, J. Temple^l, N. Terentyev^k,
 V.V. Teterin^g, V.V. Tokmenin^g, D. Tompkins^l, L. Uvarov^k,
 S. Uvarov^k, I.A. Vasilyev^j, L.S. Vertogradov^g,
 P.R. Vishwanath^f, A. Vorobyov^k, V.B. Vysotsky^{g,w},
 H. Willutzki^s, M. Wobischⁿ, D.R. Wood^r, R. Yamadaⁿ,

Y.A. Yatsunenکو^g, F. Yoffeⁿ, M. Zanabriaⁿ, T. Zhao^t,
D. Zieminska^p, A. Zieminski^p, S.A. Zvyagintsev^j ¹

^a*Institute of High Energy Physics, Beijing, People's Republic of China*

^b*Center for Particle Physics, Charles University, Prague, Czech Republic*

^c*Czech Technical University, Prague, Czech Republic*

^d*Institute of Physics, Academy of Sciences, Center for Particle Physics, Prague, Czech Republic*

^e*Universidad San Francisco de Quito, Quito, Ecuador*

^f*Tata Institute of Fundamental Research, Mumbai, India*

^g*Joint Institute for Nuclear Research, Dubna, Russia*

^h*Institute for Theoretical and Experimental Physics, Moscow, Russia*

ⁱ*Moscow State University, Moscow, Russia*

^j*Institute for High Energy Physics, Protvino, Russia*

^k*Petersburg Nuclear Physics Institute, St. Petersburg, Russia*

^l*University of Arizona, Tucson, Arizona 85721*

^m*Florida State University, Tallahassee, Florida 32306*

ⁿ*Fermi National Accelerator Laboratory, Batavia, Illinois 60510*

^o*Northern Illinois University, DeKalb, Illinois 60115*

^p*Indiana University, Bloomington, Indiana 47405*

^q*Boston University, Boston, Massachusetts 02215*

^r*Northeastern University, Boston, Massachusetts 02115*

^s*Brookhaven National Laboratory, Upton, New York 11973*

^t*University of Washington, Seattle, Washington 98195*

^u *Visitors from Institute of Nuclear Problems of the Belarusian State University, Minsk, Belarus*

^v *Visitor from National Scientific and Educational Centre of Particle and High Energy Physics, Belarusian State University, Minsk, Belarus*

^w *Visitor from Research and Production Corporation "Integral", Minsk, Belarus*

Abstract

We describe the design, construction and performance of the upgraded DØ muon system for Run II of the Fermilab Tevatron collider. Significant improvements have been made to the major subsystems of the DØ muon detector: trigger scintillation counters, tracking detectors, and electronics. The Run II central muon detector has a new scintillation counter system inside the iron toroid and an improved scintillation counter system outside the iron toroid. In the forward region, new scintillation counter and tracking systems have been installed. Extensive shielding has been added in the forward region. A large fraction of the muon system electronics is also new.

¹ Corresponding author. Tel.: + 630-840-3851; Fax: + 630-840-8886; *E-mail address*: denisovd@fnal.gov

1 Introduction

The DØ detector [1] collected approximately 120 pb^{-1} of data during Run I of the Fermilab Tevatron collider from 1992 to 1996. While the Tevatron was shut down for improvements from 1996 to the beginning of Run II in 2001, the DØ collaboration undertook and completed a substantial detector modification program in order to exploit fully the potential of the upgraded Fermilab collider including an increase in instantaneous luminosity up to $3 \times 10^{32} \text{ cm}^{-2} \text{ s}^{-1}$, an increase in center of mass energy from 1.8 to 1.96 TeV, and a reduction in bunch spacing from $3.5 \mu\text{s}$ to 396 ns. With improvements to the Tevatron, we expect to collect $4\text{--}8 \text{ fb}^{-1}$ of data by the end of Run II in 2009. In this paper we describe the design, construction and performance of the DØ Run II muon system.

The muon system of a general-purpose collider detector should provide efficient muon triggering and identification with extensive solid angle and momentum coverage and low backgrounds. Stable and reliable performance over many years of operation and radiation hardness in the high luminosity hadron collider environment are critical for the muon system as well. The Run II DØ muon system was designed with the above goals in mind while also taking into account existing technical constraints of the Run I detector [2] and available resources.

The main components of the DØ muon system are identified in the cross-sectional view of the Run II DØ detector shown in Fig. 1. The DØ coordinate system has the z -axis along the Tevatron proton beam direction, x -axis horizontal and pointing out of the Tevatron ring, and y -axis pointing straight up. The center of the coordinate system is located in the central tracking detector center. We use pseudorapidity defined as $\eta = -\ln[\tan(\theta/2)]$, where θ is the polar angle measured relative to the z -axis. The Run I DØ muon system [2] consisted of two subsystems: the Wide Angle MUon System (WAMUS) and the Small Angle MUon System (SAMUS). WAMUS, covering the pseudorapidity region $|\eta| < 2.0$, consisted of proportional drift tubes (PDTs) and three large iron toroidal magnets: a central toroid (CF) and two end toroids (EFs). The PDT chambers were arranged in three layers: the A-layer inside the toroids and the B and C-layers outside the toroids. SAMUS, covering $2.0 < |\eta| < 3.0$, consisted of a set of drift tube planes and two small iron toroids. For Run II, the PDT chambers in the forward region ($1.0 < |\eta| < 2.0$) were replaced by a new tracking system and the SAMUS magnets were replaced by shielding assemblies. The three main toroids in the DØ muon magnet system, the CF and the two EFs, were not changed. The Run II DØ muon magnet system is discussed in Section 2.

Simulation studies and experience from Run I demonstrated that additional

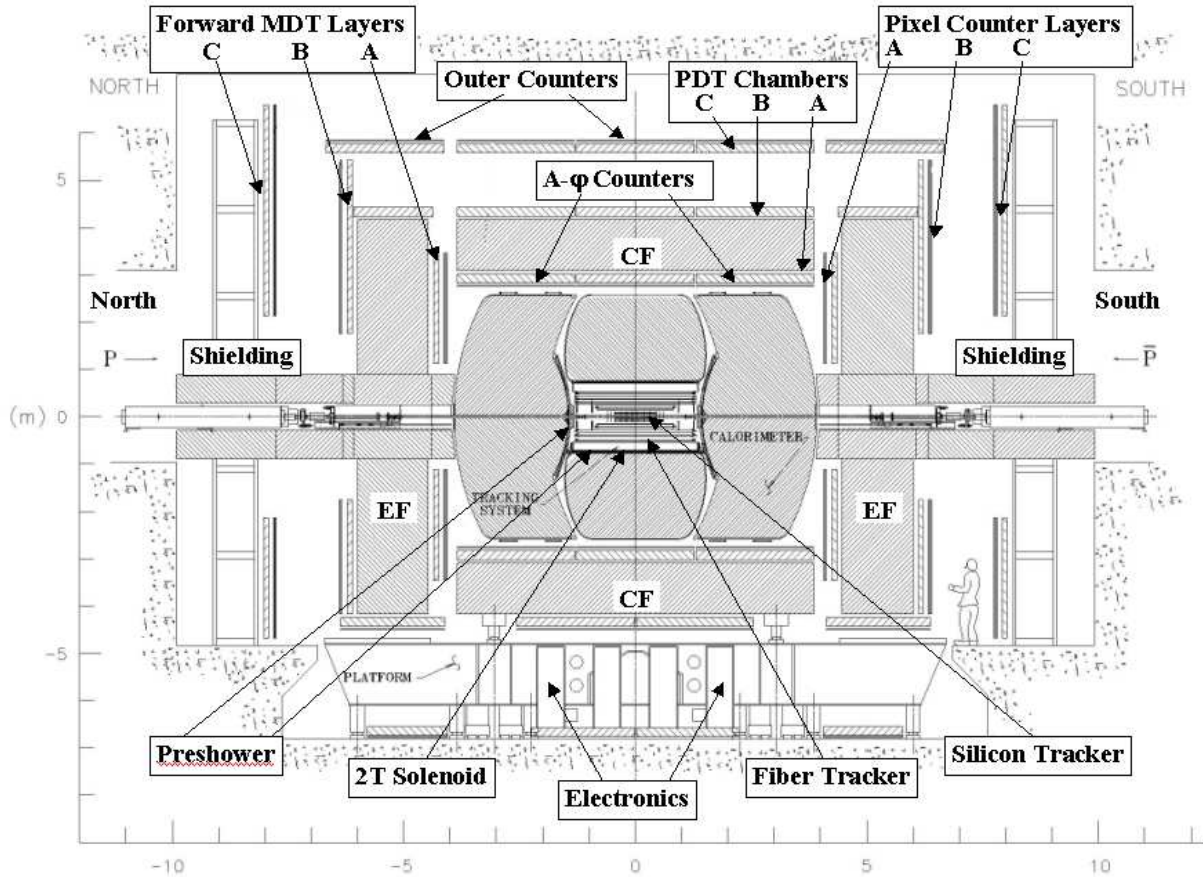


Fig. 1. Cross-sectional view of the DØ Run II detector.

shielding was needed to protect the muon system and other components of the DØ detector from the increased background expected in Run II. Two sets of shielding assemblies consisting of layers of iron, polyethylene and lead were installed in the existing apertures of the end iron toroids and around the accelerator quadrupole magnets. The design of the new shielding system is discussed in Section 3.

In Section 4 we discuss three scintillation counter systems added to the original DØ detector. Triggering on muons and identifying them in the Run II environment with shortened bunch spacing and increased luminosity requires the use of scintillation counters with fine segmentation and good time resolution. The effort to improve the muon trigger began in the latter part of Run I when 240 scintillation counters covering the region $|\eta| < 1.0$ and six of the eight octants in azimuth were installed. The solid angle coverage of these counters has now been extended to the bottom of the detector with the installation of 132 additional counters. This counter system is discussed in Section 4.1. In addition to the counters outside of the central iron toroid, two new scintillation trigger counter systems have been added for Run II: a set of 630 scintillation counters called $A\phi$ counters are located inside the central toroid

and another 4214 counters called “pixel” counters are installed in the forward region ($1.0 < |\eta| < 2.0$) [3]. The $A\varphi$ counter system is discussed in Section 4.2 and the pixel counter system is discussed in Section 4.3.

In Section 5 we describe the muon tracking detector which consists of PDTs in the central rapidity region $|\eta| < 1.0$ and mini drift tubes (MDTs) in the forward region ($1.0 < |\eta| < 2.0$). The MDT system is a new tracking system that replaces the WAMUS PDT chambers in the forward region.

In Section 6 we discuss the electronics design of the $D\emptyset$ muon system, describe methods of electronics synchronization to the accelerator, and present the parameters of the major electronics modules designed for Run II. A summary is given in Section 7.

2 Muon toroidal magnets

The three magnets of the Run II muon detector magnet system [4]; the central iron toroid and the two end iron toroids; are mounted on the platform that moves the entire detector between detector assembly hall and the collision hall. These toroids account for about 65% of the total 5500 ton weight of the detector. A cross-sectional view of the Run II $D\emptyset$ magnet system is presented in Fig. 2. End views of the CF and EF magnets are shown in Fig. 3. Two small toroids that were located inside the square apertures of the two end toroids as part of SAMUS in Run I were removed and replaced by two shielding assemblies that are discussed in the next section.

As indicated in the end view of the CF toroid in Fig. 3, the CF toroid yoke is made of two side pieces of steel plus a central segment at the bottom. The separating lines of the three pieces are indicated by the thick solid vertical lines (one at the top and two at the bottom of the sketch of the CF). The central segment of the CF is mounted on the detector platform. The calorimeter, the superconducting solenoid, and the central tracking systems are supported by this central segment. The two side toroid segments move laterally when the detector is opened to permit access to the inner detector systems. Stainless steel shim plates, 0.48 cm thick at the top parting line and 0.32 cm thick at the two bottom parting lines, prevent the three magnet elements from “bonding” together magnetically due to residual induction in the steel. Penetrations are provided through the lower sections of the CF yoke for the passage of the cables of the tracking system. The yokes of the EFs are made of steel with central openings.

The central toroid has twenty coils; each end toroid has eight coils. Each CF coil has ten turns and each EF coil has eight turns. All coils in the toroidal

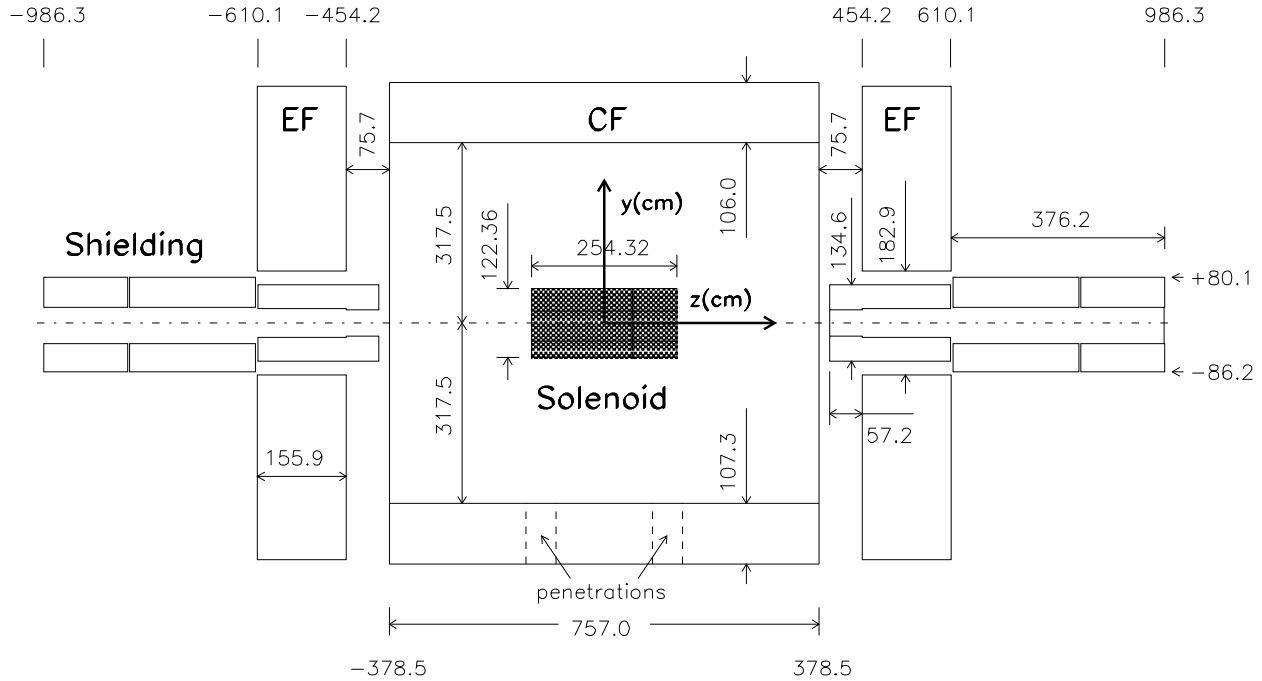


Fig. 2. Cross-sectional view of the magnet system and the two shielding assemblies.

magnets are connected in series and powered by a power supply with a rating of 2500 A at 200 V. This power supply is connected in series with a 0.83 m Ω choke and a reversing switch. The operating current of the toroid coils in Run I was 2500 A; it has been reduced to 1500 A in Run II providing substantial operational cost savings. As a result, the average magnetic field strength in the toroidal magnets is reduced by approximately 6%. Since precision muon momentum measurement in Run II is based on information from the central tracker, this minor reduction in magnetic field strength does not adversely affect muon triggering or reconstruction.

As a major upgrade to the D \emptyset magnet system for Run II, a superconducting solenoidal magnet with a 2 T magnetic field was added inside the inner cavity of the calorimeter. The diameter of the superconducting coil is about 122 cm and the total length is about 254 cm. The magnetic field lines of the central solenoid are returned by the iron toroidal magnets and by iron in the shielding assemblies. Due to the addition of this solenoidal magnet, the magnetic environment of the inner muon detector system and the field distributions in the iron toroids are modified. The magnetic field of the Run II D \emptyset detector mag-

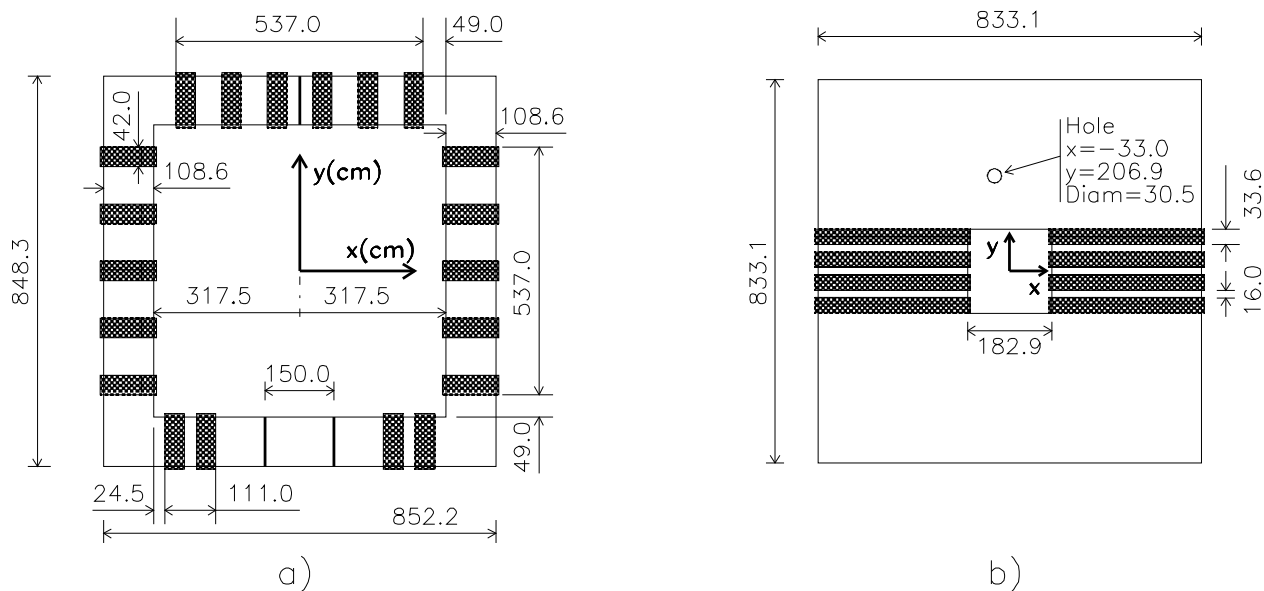


Fig. 3. a) End view of the CF magnet; b) End view of the EF magnet. The hole at $x = -33$ cm, $y = 206.9$ cm is for bypass of the Run I accelerator beam pipe.

net system is calculated using the program TOSCA [5] and corrected using measured values of the field in the steel of the toroids. The estimated errors of the field map are 1% for the iron magnets and 0.1% for the solenoid. The magnetic field associated with the solenoidal magnet is shown in Fig. 4. The magnetic field inside the CF and EF yokes is shown in Figs. 5 and 6.

Both toroidal and solenoidal magnets have current reversing switches which are reversed regularly so that the experiment collects approximately equal amounts of data in each of the four possible field configurations.

3 Backgrounds and Shielding

Studies performed during Run I led us to understand that most hits in the Run I muon detectors did not originate from colliding-beam-produced muons. Rather, there were several sources of particles that accounted for the high detector occupancies observed. First, associated with proton and antiproton beams losses in the Tevatron and their subsequent interaction with the accelerator components, there was a background of particles coming from the accelerator tunnel into the DØ collision hall. To suppress this background, two protective measures have been developed based on MARS [6] calculations

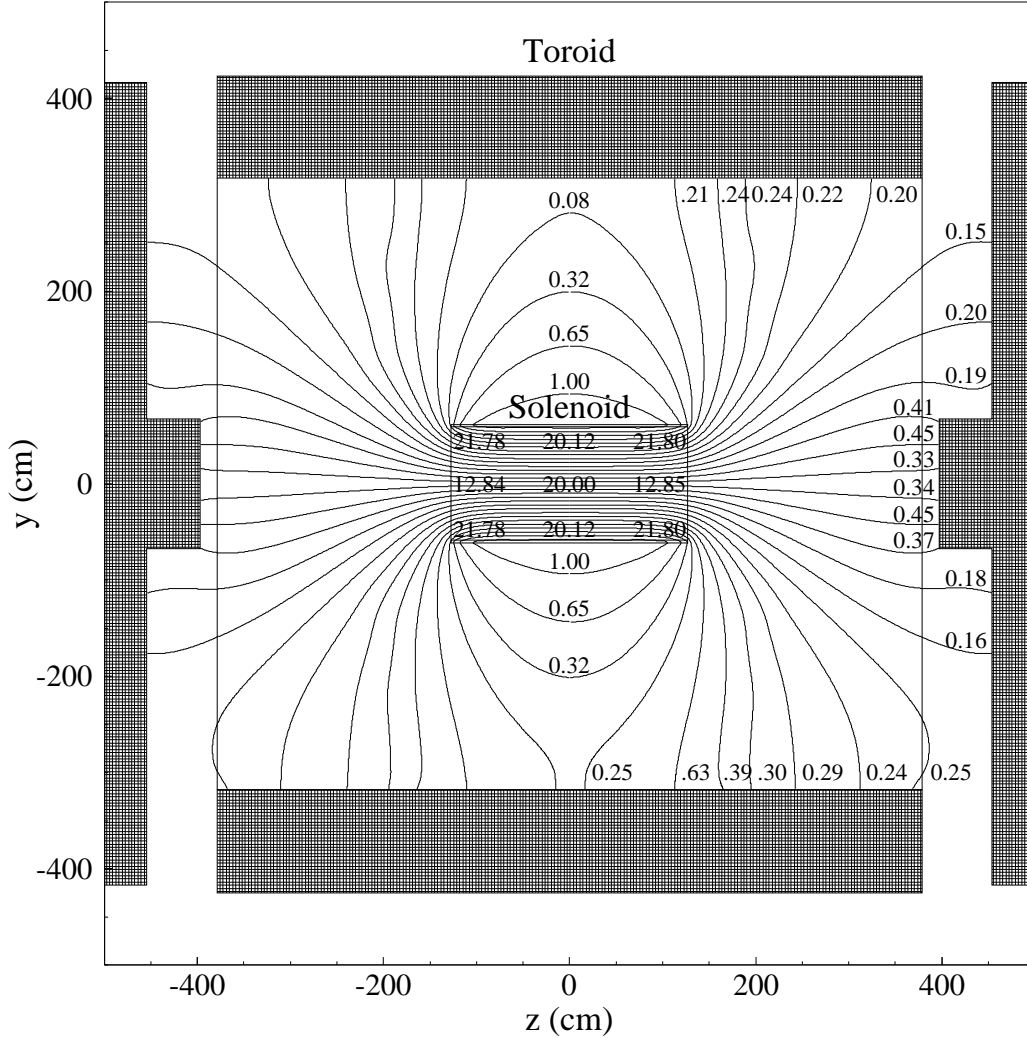


Fig. 4. Solenoid magnetic field in the $y - z$ plane of the detector. The magnetic field is in kG.

and implemented during the 1994 Tevatron shutdown [7]: (i) two 2-m-thick concrete walls were installed in the tunnel on both sides of the DØ collision hall; (ii) the accelerator A0 scraper was replaced with a new one with two thin scattering targets. After these steps, the Tevatron halo backgrounds became negligible compared to other backgrounds [7,8]. Second, the remnants of the proton and antiproton, after their collision at the interaction point, interact with the beam pipe, the edges of the forward calorimeter near the beam pipe, and the accelerator’s low-beta quadrupole magnets. The background from the forward calorimeter edges was seen in all muon detector components inside the toroid, including the central muon detectors. The time spectrum of these particles was measured with scintillation counters. The arrival time was as expected for particles originating near the beam pipe at the calorimeter edges. Because the path was longer than that of muons originating from collisions, the background particles arrive measurably later than muons originating in

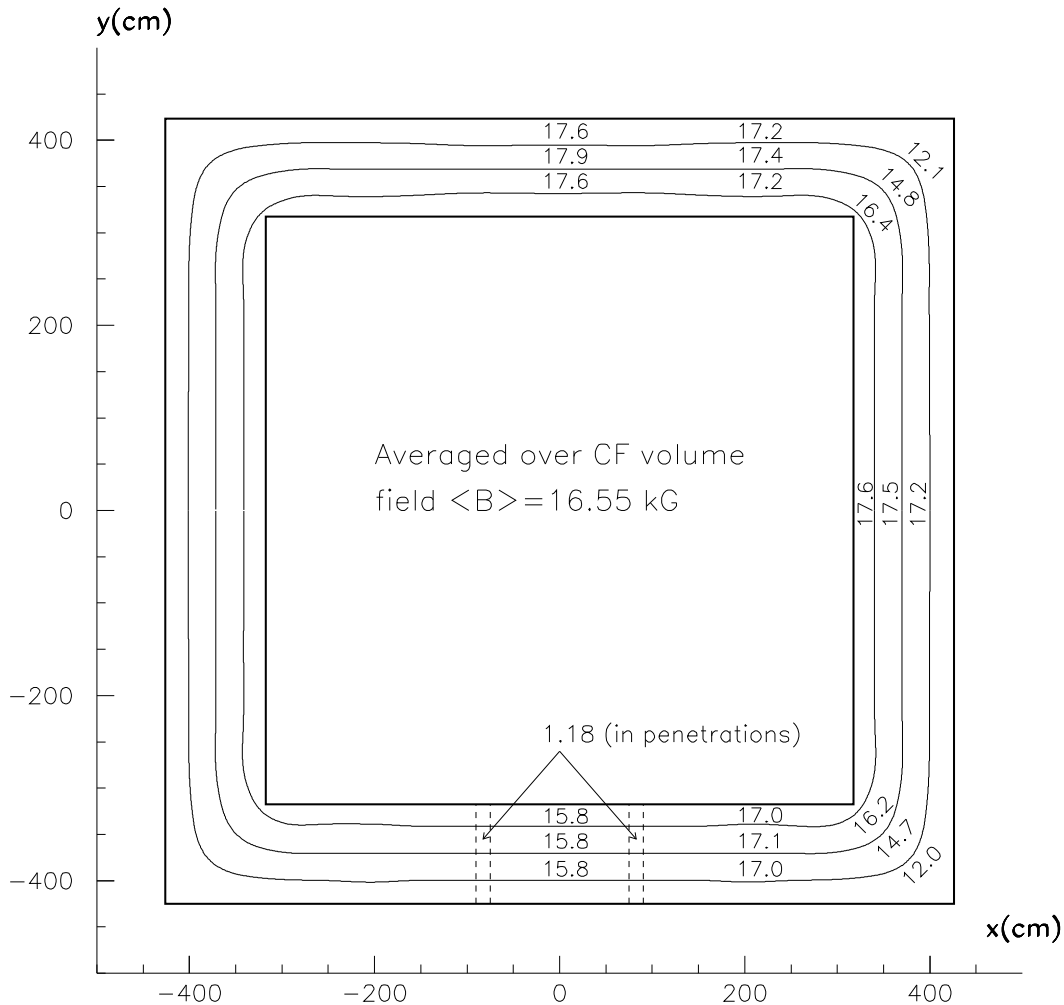


Fig. 5. Magnetic field in the central toroid magnet. The magnetic field is in kG.

the detector center. The background from the low-beta quadrupole magnets was detected in all parts of the forward muon detector and in those parts of the central muon system not protected by the EF magnets. Cosmic ray muons are only a small contributor to the detectors' occupancy.

In response to the experience in Run I, we have performed a detailed analysis of shielding for the Run II muon detector [8,9]. Simulations were performed with GEANT [10] and MARS Monte Carlo codes. The new shielding design includes two 100-ton assemblies surrounding the beam pipe and the low-beta quadrupole magnets on both ends of the detector. The shielding assembly extends from the end of the calorimeter to the wall of the collision hall. To permit articulation of the detector during opening and roll-in, each of the two shielding assemblies is made in three overlapping segments. Fig. 7 shows a shielding assembly in the detector operating position. During the detector

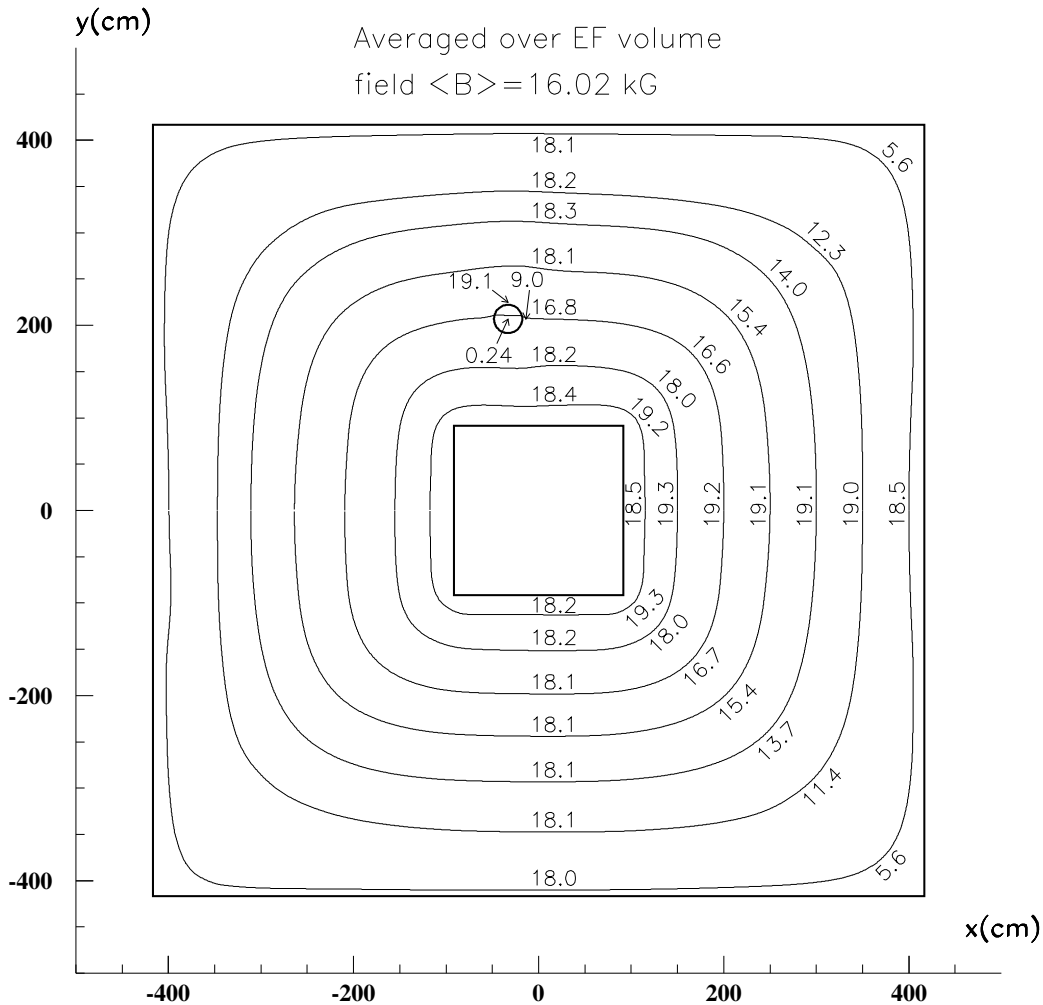


Fig. 6. Magnetic field in the end toroid magnet. The magnetic field is in kG.

opening process, the end section of the shielding assembly is first split open and the middle section is moved away from detector center on its support rails. The front section of the shielding assembly is supported by the EF toroid and moves together with the EF toroid.

The shielding assemblies consist of layers of iron, polyethylene, and lead. The innermost layer is made of iron because it has reasonably short interaction (16.8 cm) and radiation (1.76 cm) lengths, and is relatively inexpensive. The optimal thickness of the individual layers is determined by Monte Carlo simulations (GEANT and MARS). The iron absorbs electromagnetic and hadronic showers that make up the majority of the background. However, iron is almost transparent to low energy neutrons. Polyethylene is used as a neutron absorber because it is rich in hydrogen and effective in moderating neutrons. Neutron capture in the polyethylene results in gamma rays. They are, in turn,

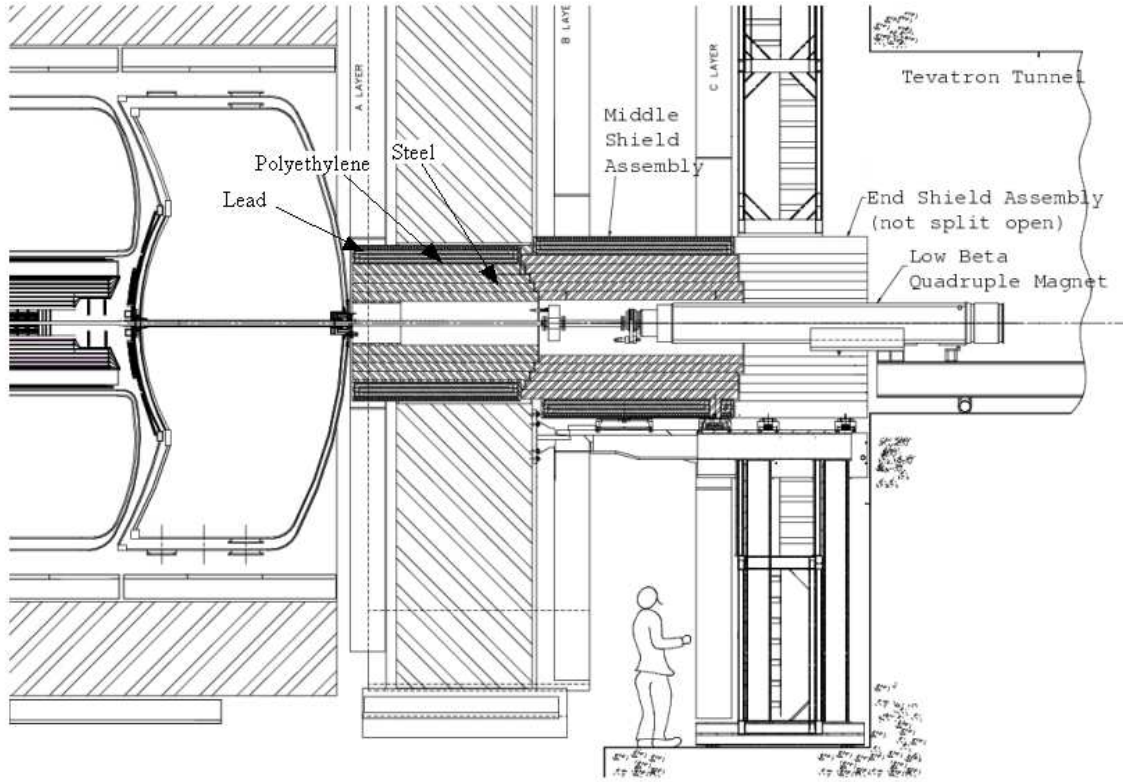


Fig. 7. Shielding assembly.

absorbed by the outermost lead layer. The shielding is a square tube with wall thickness of 51 cm of iron followed by 15 cm of polyethylene and 5 cm of lead.

The comparison between simulated energy depositions from hadron and electromagnetic showers at an instantaneous luminosity of $2 \times 10^{32} \text{ cm}^{-2} \text{ s}^{-1}$ can be seen in Figs. 8 and 9. Fig. 8 shows the muon system without and Fig. 9 with the shielding system. The three scintillation counter layers in the detector forward region (seen as vertical lines in the figures) are located approximately 400, 690 and 830 cm from the interaction region. The grayscale of the detector areas indicates the level of the radiation dose. Using the Monte Carlo simulation, we find that the energy deposition in the scintillator planes is reduced by a factor of approximately 10^2 . As a result, the number of background hits in the muon counters is reduced by a factor of between 40 and 10^2 [8,9]. Background rates obtained during Run II agree with the Monte Carlo simulation within 50%. For example, occupancy of the B and C-layers of the forward trigger scintillation counters (Section 4.3) for minimum bias event at a luminosity of $2 \times 10^{31} \text{ cm}^{-2} \text{ s}^{-1}$ is 0.02%.

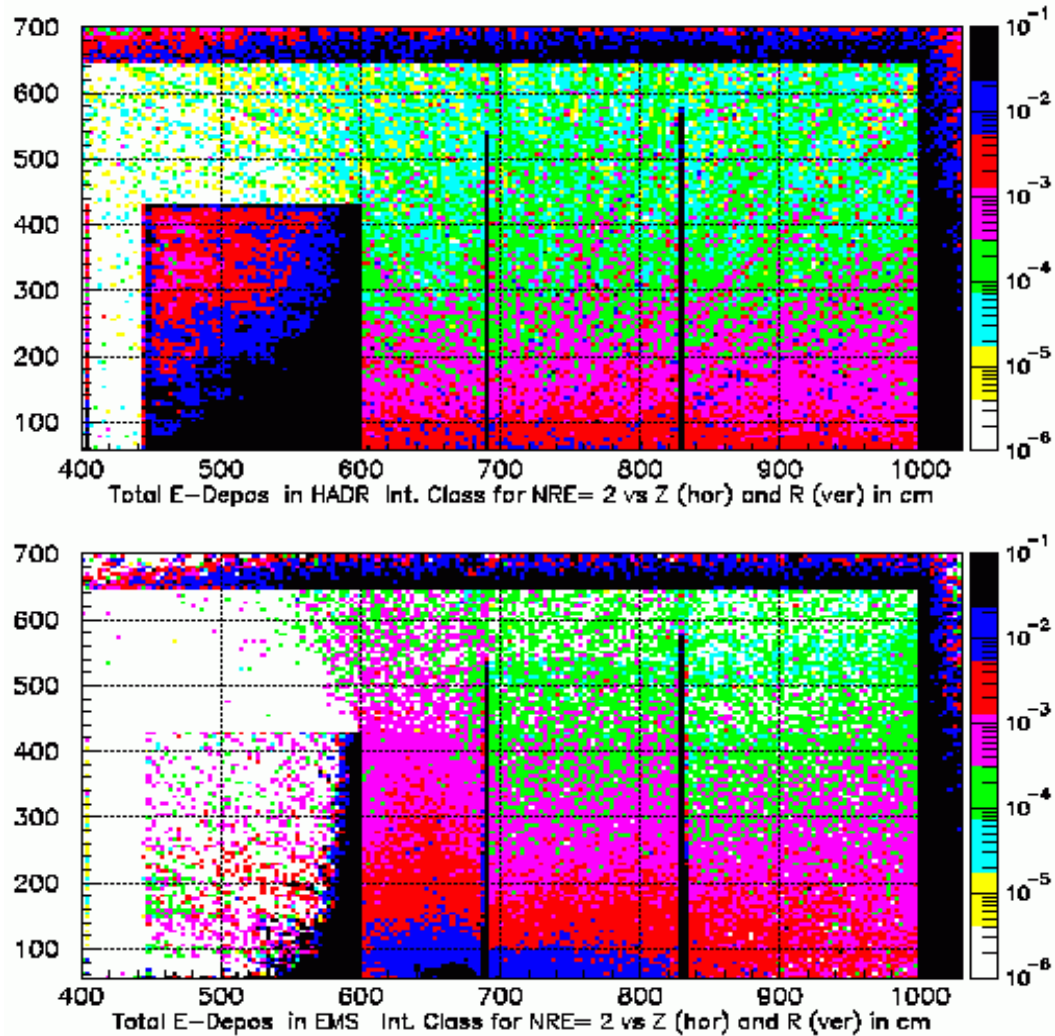


Fig. 8. Energy depositions from hadron (top) and electromagnetic showers (bottom) in the DØ muon detector without the shielding system. The units of the energy deposition scale shown on the right side of the figure are GeV/cm^3 per sec for an instantaneous luminosity of $2 \times 10^{32} \text{ cm}^{-2}\text{s}^{-1}$. The darker shades indicate higher energy deposition. Vertical axis is y and horizontal axis is z coordinate in the DØ coordinate system given in cm.

4 Scintillation trigger counters

The triggering capability of the Run II DØ muon system has been greatly enhanced by the addition of scintillation counters with fine segmentation and good time resolution. The central region ($|\eta| < 1.0$) of the Run II DØ detector is covered by two layers of scintillation counters, one layer outside of the central toroid and one layer inside. The forward regions ($1.0 < |\eta| < 2.0$) are covered by three layers of scintillation counters, one layer inside the end toroid and two layers outside. These counters are used to trigger on muons associated

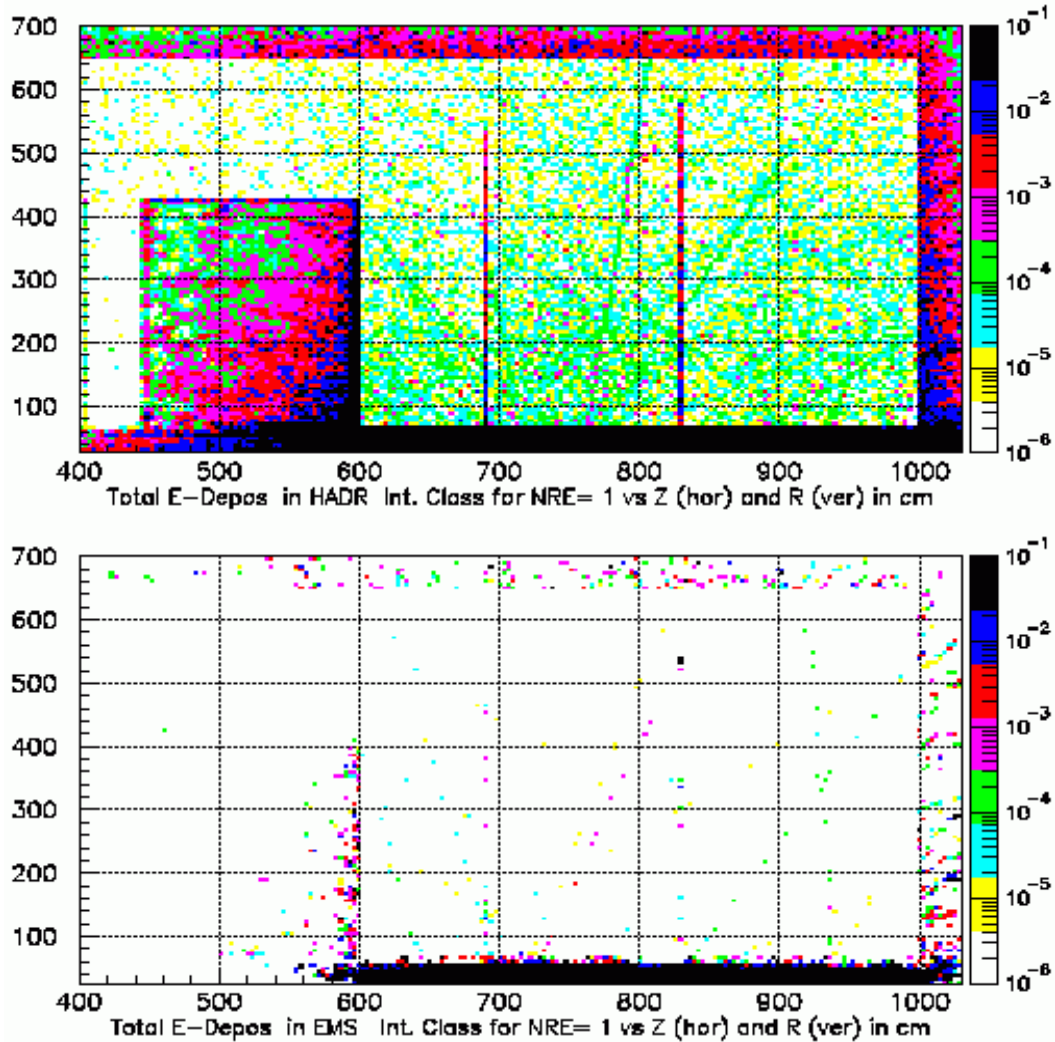


Fig. 9. Energy depositions from hadron (top) and electromagnetic showers (bottom) in the DØ muon detector with the shielding system. The units of the energy deposition scale shown on the right side of the figure are GeV/cm^3 per sec for an instantaneous luminosity of $2 \times 10^{32} \text{ cm}^{-2}\text{s}^{-1}$. The darker shades indicate higher energy deposition. Vertical axis is y and horizontal axis is z coordinate in the DØ coordinate system given in cm.

with proton-antiproton collisions and to provide precise timing information for reconstructing muon trajectories using the muon tracking chambers. Fine segmentation and good timing resolution of these counters are essential for rejecting cosmic ray muons and other out-of-time backgrounds discussed previously.

The design p_T threshold for the unrescaled muon triggers in Run II is $6 \text{ GeV}/c$ for a single muon trigger and $3 \text{ GeV}/c$ for a dimuon trigger. The Level 1 muon trigger combines track candidates in the central fiber tracker [11] with information in the muon scintillation counter system. Therefore, the layout of

the scintillation counters is required to match the 4.5° trigger segmentation in φ of the fiber tracker. More information about the DØ three-level trigger system is given in Section 6.

4.1 Scintillation counters outside the central toroid

During the latter part of Run I, 240 scintillation counters for muon triggering were installed on the top and two sides of the C-layer PDT chambers. Details of this counter system are given in Ref. [12]. These scintillation counters span $|\eta| < 1.0$ and cover six octants (top and sides) in azimuth.

For Run II, an additional 132 scintillation counters covering the two bottom octants were installed under the central toroid and the two end toroids. The design of these counters is similar to the counters installed previously. They are made of scintillator sheets with embedded wavelength shifting (WLS) fibers for light collection. EMI 9902K [13] photomultiplier tubes 38 mm in diameter are used to read out the light produced by the counters. The size of these counters is approximately $200 \text{ cm} \times 40 \text{ cm}$. They are arranged in two layers (B and C) and are oriented with the short dimension (40 cm) along the φ direction, so that each counter covers approximately 4.5° in φ .

4.2 $A\varphi$ scintillation counters inside the central toroid

The $A\varphi$ counter system added for Run II has 630 counters mounted on the A-layer PDT chambers between the central iron toroid and the calorimeter covering $|\eta| < 1.0$. Each counter approximately matches the 4.5° φ -segmentation of the central fiber tracker. There are nine counter barrels located within $-1.0 < \eta < 1.0$. Combining the “in-time” hits from the $A\varphi$ counters with tracks in the central fiber tracker is a key element of muon triggers with low p_T thresholds. The time gate for $A\varphi$ counters signals is 24 ns at the Level 1 trigger. In addition, the $A\varphi$ counters provide timestamps to reconstruct muon tracks in the A-layer PDT chambers. This is particularly important for low- p_T muons that do not penetrate the toroidal magnet.

4.2.1 Counter design

The $A\varphi$ counters are made from 12.7-mm-thick BICRON 404A scintillator with BICRON BCF 92 wavelength shifter fiber [14] embedded in machined grooves [15] (see Fig. 10). This WLS has a fast (2.7 ns) decay time and its absorption spectrum matches the 420 nm emission peak of the 404A scintillator. The grooves are machined 4.5 cm apart and 6 mm deep and run from

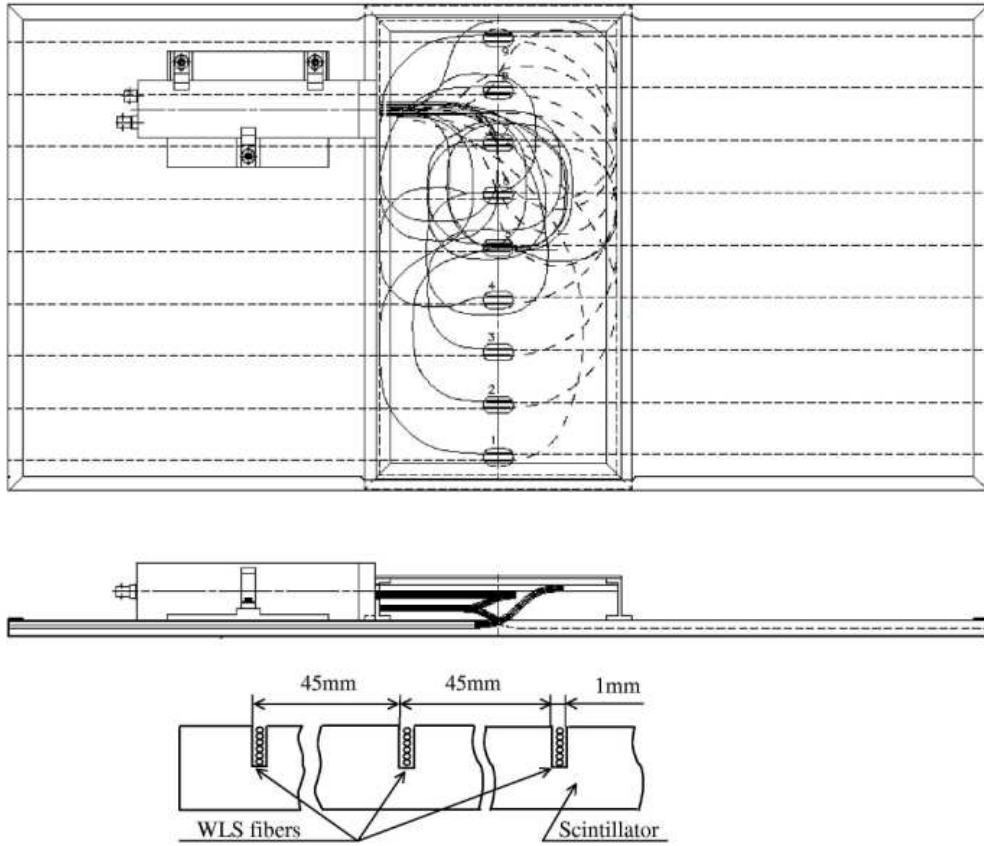


Fig. 10. Top and side views of an $A\phi$ counter and counter cross section.

the center of the counter to its edge. Six individual fibers are glued into each groove and tapered out of the groove at the middle of the counter. Fibers from 10 to 16 grooves are combined into a single bundle that directs light to a 25-mm-diameter green-extended 115M phototube made by MELZ [16]. This phototube has an average quantum efficiency of 15% at 500 nm with a maximum gain around 10^6 . The sensitivity peak of the 115M photocathode matches the 480 nm emission peak of the WLS fibers. The phototube is secured to the counter case at the center of the counter. All fibers are within 5 mm of being the same length. Each counter is wrapped in a layer of TYVEK [17] type 1056D sheet with a layer of black TEDLAR [17] over the TYVEK for light-tightness. The counter case is an aluminium box with welded corners. The light-tight case provides mechanical protection for the counter, supports the PMT assembly, and provides counter mounts.

The $A\phi$ counters operate in the 200 to 350 G residual magnetic field of the muon toroidal and central solenoidal magnets. Studies of magnetic shielding have been performed [18] with the goal of reducing the magnetic field in the phototube region to about 1 G, which is necessary for high gain operation. The shielding consists of a 6-mm-thick soft steel tube and a 1.2-mm-thick μ -metal

Table 1
Numbers and sizes of $A\varphi$ counters.

Number	Length (cm)	Width (cm)
216	84.5	36.7
144	84.5	27.5
270	84.5	23.1

Table 2
Segmentation of the $A\varphi$ counters in a quadrant.

Counter Width (cm)	Top quadrant	Side quadrants	Bottom quadrant
36.7	3	3	3
27.5	1	3	1
23.1	12	8	2
27.5	1	3	1
36.7	3	3	3
Total number	9×20	$2 \times 9 \times 20$	9×10

cylinder. With this shielding, the phototubes can operate without significant gain reduction in a 700 G magnetic field perpendicular to the phototube axis. For fields parallel to the tube axis, the gain reduction is less than 5% at 250 G and less than 10% at 350 G.

4.2.2 Counter arrangement and mounting

The $A\varphi$ counters cover the four quadrants of the A-layer PDT chambers. The length of the A-layer PDT chambers in the beam direction is approximately 7.6 m. Nine barrels of counters cover the entire span $|\eta| < 1.0$ in the beam direction. The length of each $A\varphi$ counter is 84.5 cm. Twenty counter columns, of three different widths, cover one quadrant in the azimuthal direction. Three different widths; large, medium and small; allow each column of counters to cover approximately 4.5° in φ , matching the φ -segmentation of the fiber tracker trigger. The numbers and dimensions of the three differently sized counters are given in Table 1. Fig. 11 shows the counter arrangement in a quadrant and Table 2 summarizes the counters' segmentation.

The edges between neighboring counters in azimuth overlap to prevent inefficiency. The average overlap between counters is about 3% of the counter width. In the longitudinal direction, the counters are mounted end-to-end with a 10 mm gap between scintillators. The bottom quadrant is instrumented with

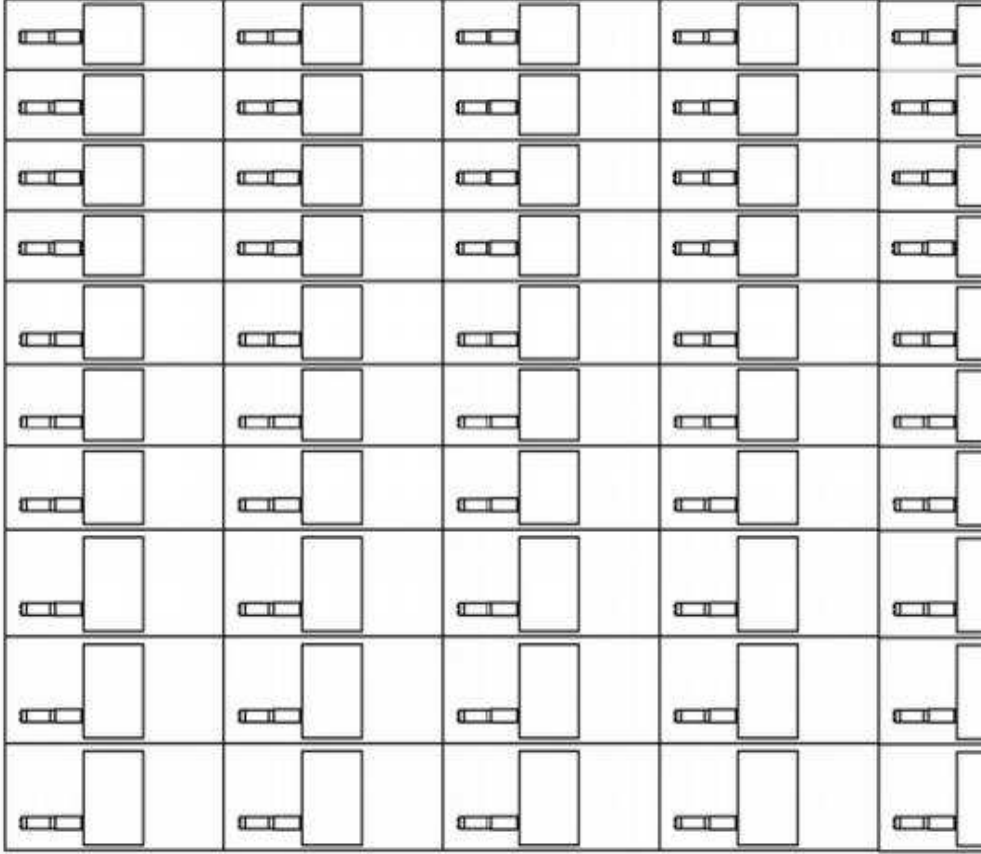


Fig. 11. The arrangement of $A\varphi$ counters in one of the side quadrants. One quarter of a quadrant (four and one half barrels and 10 columns) is shown.

only ten counter columns because of the calorimeter support and other mechanical obstructions. The counters are mounted on aluminium cross members attached to steel brackets that are secured to the edges of the PDT chambers. The mounting system of the $A\varphi$ counters ensures that the relative positions of the counters are fixed to within about 1 mm. The actual position of each counter is measured to an accuracy of 3 mm.

4.2.3 Aging of counters

The $A\varphi$ counters are shielded by the calorimeter and consequently the expected Run II radiation dose is less than 1 krad in the hottest region. From studies of the radiation effects on the light output and attenuation length for three different types of scintillation materials and three WLS materials [18], we concluded that the best performance in terms of radiation hardness is obtained by using the combination of BICRON 404A scintillator and BCF 91A WLS fibers [14]. After 20 krad, the light output from counters made from BICRON 404A plus BCF 91A fiber decreases by only 1% compared to 15%

for a counter that uses BCF 92 fiber. This is caused mainly by the decreased attenuation length in the WLS fibers due to radiation damage. Since the expected dose is less than 1 krad in the highest dose location (for total delivered luminosity of 10 fb^{-1}), BCF 92 fibers were selected for better light output and timing. We expect no significant performance degradation of $A\varphi$ counters in Run II due to radiation damage.

The effect of phototube aging is also expected to be small. The gain reduction of phototubes after 100 C charge deposition on the phototube anode is about 10%. The charge deposition for the phototubes in the $A\varphi$ counters is expected to be well below 100 C. Any small gain reduction can be compensated for by adjusting the signal discrimination threshold or phototube operating voltage.

4.2.4 Counter performance

During prototype counter tests the average integrated pulse height was measured to be approximately 55 photoelectrons for cosmic ray muons that penetrate the middle of the counter. The measured reduction of signal amplitude for the area that is farthest away from the phototube is approximately 7%. The time resolution of the counter is measured to be 0.8 ns, for 20 mV discrimination threshold, while muon signal amplitude is adjusted to be approximately 0.10 V.

During counters production, the light yield for each scintillation counter was measured using cosmic muons and the gain of each phototube was measured on a test stand. Phototube-to-counter matching was then done to obtain the same signal amplitudes in each group of fifteen counters connected to the same high voltage power supply during detector operation.

The performance of the installed $A\varphi$ counter system during Run II has been monitored using muons from proton-antiproton collisions. The time-of-arrival of hits using all $D\bar{O}$ triggers is shown in Fig. 12a and the time-of-arrival of hits using muon triggers based on the central scintillation counters only is shown in Fig. 12b. The peaks around zero in both figures are from muons originating at the interaction region. The time-of-arrival distribution shown in Fig. 12a includes a significant number of late hits from the various background sources discussed in Section 3. A secondary peak near 10 ns that is visible in Fig. 12b is caused by backscattered particles from the edges of calorimeter. The time resolution of all 630 $A\varphi$ counters combined is $\sigma_t = 2.5 \text{ ns}$ without corrections for differences in time-of-flight, light propagation in the counters or cable length within each group of fifteen counters. Other factors that contribute to the measured time resolution of the $A\varphi$ counters include the intrinsic resolution of the counter and variations in the z -position of the interaction vertex.

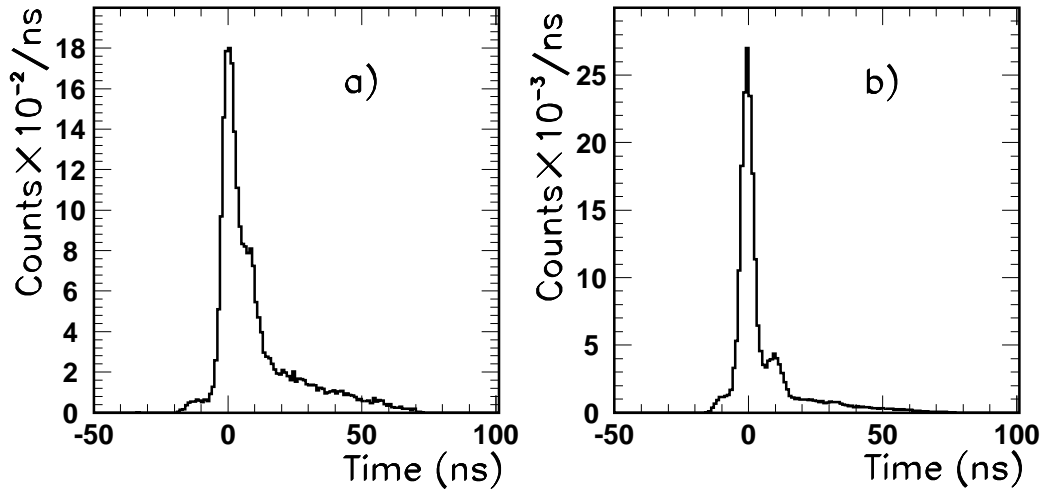


Fig. 12. The time-of-arrival distributions recorded by $A\phi$ counters in events triggered by a) all triggers; b) muon triggers only.

4.3 Scintillation Trigger Counters in Forward Regions

4.3.1 System layout

The “pixel” counter system covering $1.0 < |\eta| < 2.0$ consists of 4214 trapezoidal-shaped scintillation counters. These are arranged so that muons originating at the interaction region traverse the three counter layers, A, B and C, shown in Fig. 1. The A-layers and the B-layers are mounted on the inside and outside faces of the two EF toroids respectively, while the C-layers are mounted on two separate steel structures mounted on sidewalks of the detector hall. The C-layer, the largest among the three layers, is approximately $12 \times 10 \text{ m}^2$. A photograph of C-layer pixel counters is shown in Fig. 13 where the shielding around the beam pipe described in Section 3 is also clearly seen.

In each layer, the trapezoidal-shaped counters are arranged in an $r - \phi$ geometry in about twelve concentric zones in the radial direction. The η -segmentation is 0.12 for the nine inner zones and 0.07 for the three outer zones. The ϕ -segmentation is 4.5° . The choice of the segmentation is driven by the ϕ -segmentation of the central fiber tracker trigger, the minimum muon trigger momentum threshold, muon multiple scattering in the toroids, background trigger rates due to accidental coincidences, and the total number of counters required. In the forward region where the background rates are high, the granularity must be sufficiently fine to keep the combinatoric background trigger

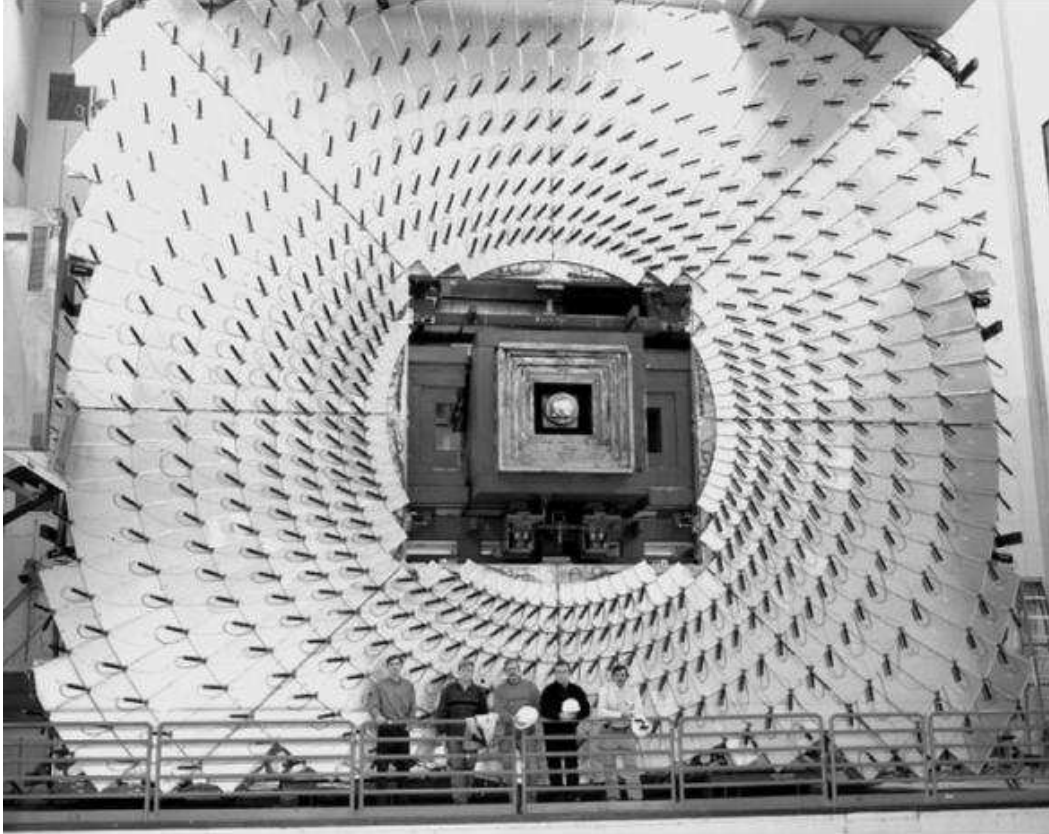


Fig. 13. A photograph of C-layer pixel counters.

rate low. For three layers of N counters, the combinatoric background rejection scales as N^3 assuming hits in the layers are uncorrelated, so small changes in granularity have a big effect on the combinatoric background.

The size of the smallest counters in the A-layer is $9 \times 14 \text{ cm}^2$ and the size of the largest counters in the C-layer is $60 \times 110 \text{ cm}^2$. The minimum size of the pixel counters is defined by the 3° multiple scattering angular spread of a $p_T = 3 \text{ GeV}/c$ muon through the end toroid. As mentioned earlier, triggering on muons down to $p_T = 3 \text{ GeV}/c$ is one of the basic requirements for the $D\bar{O}$ muon trigger system.

4.3.2 Pixel counter design and mounting

Several light collection methods were studied in order to optimize the pixel counters for light yield, uniformity, time resolution, and background rejection while maintaining a reasonable production cost. From measurements [15], we concluded that for the geometry of our counters, WLS bars give better light collection efficiency and allow a simpler construction procedure than WLS fibers. The design using WLS bars for light collection was chosen as the basic option for the large majority of the counters [18].

The counters use Kumarin 30 type WLS bars [19] for light collection and 12.7-mm-thick BICRON 404A scintillator plates of trapezoidal shape. BICRON 404A scintillation light emission peak is 420 nm, its decay time is 2.0 ns, and its attenuation length is 1.7 m. The absorption peak of the Kumarin 30 WLS bar matches the emission peak of the scintillator. The light emission peak of the Kumarin 30 WLS bar is 480 nm, the decay time is 2.7 ns, and the attenuation length is 1.4 m.

Effects of radiation damage on the light output of Kumarin 30 WLS bars and BICRON 404A scintillator were studied using sample counters of different sizes [18]. We concluded that the expected integrated Run II radiation level of 1 krad for an integrated luminosity of 10 fb^{-1} is significantly below what would degrade pixel counter performance.

Fig. 14 shows the details of the counter design. All four sides of the trapezoidal scintillator plate are machined but not polished. Our studies concluded that the less expensive unpolished design has better photoelectron yield and uniformity [15,18]. Two WLS bars, 4.2 mm thick and 12.7 mm wide, are placed along two edges of the scintillator plate with air gaps provided by narrow strips of adhesive tape attached to the scintillator plate as spacers. The end sections of both bars are bent by 44° to deliver light to the 25-mm-diameter MELZ 115M phototube [16]. The opposite ends of bars are made reflective using aluminized Mylar tape. To provide light tightness, the scintillator and WLS bars are wrapped in a layer of TYVEK material [17] (type 1056D) and two layers of black paper. The wrapped counter assembly is secured in a box made of two aluminium plates and an extruded aluminium profile along the perimeter.

A different light collection design was used for approximately 150 counters located in cramped areas. These counters have twelve WLS fibers along the edges of 12.7-mm-thick Bicron 404A scintillator plates for collecting the scintillation light. These fibers are BCF 92 multicladd fibers [14]. Both ends of the fibers are glued into plexiglass light-collector tubes, polished, and brought to a MELZ 115M phototube located on top of the counter assembly. This design provides 60 to 110 photoelectrons per minimum ionizing particle, depending on the counter's size. Using multicladd instead of singlecladd BCF 92 fiber [15] increases the light yield 1.4 and 1.7 times for counter sizes $13 \times 18 \text{ cm}^2$ and $38 \times 44 \text{ cm}^2$, respectively.

A phototube assembly; containing a phototube, magnetic shielding, and tube base; is attached to the counter case by a threaded connection. The residual magnetic field of the muon toroids and the central solenoidal magnet is typically 150 G for A-layer pixel counters but can reach 300 G in some locations. For the B-layer pixel counters, the typical value is 100 G. The phototube magnetic shielding is similar to the shielding used for the phototubes of the $A\varphi$

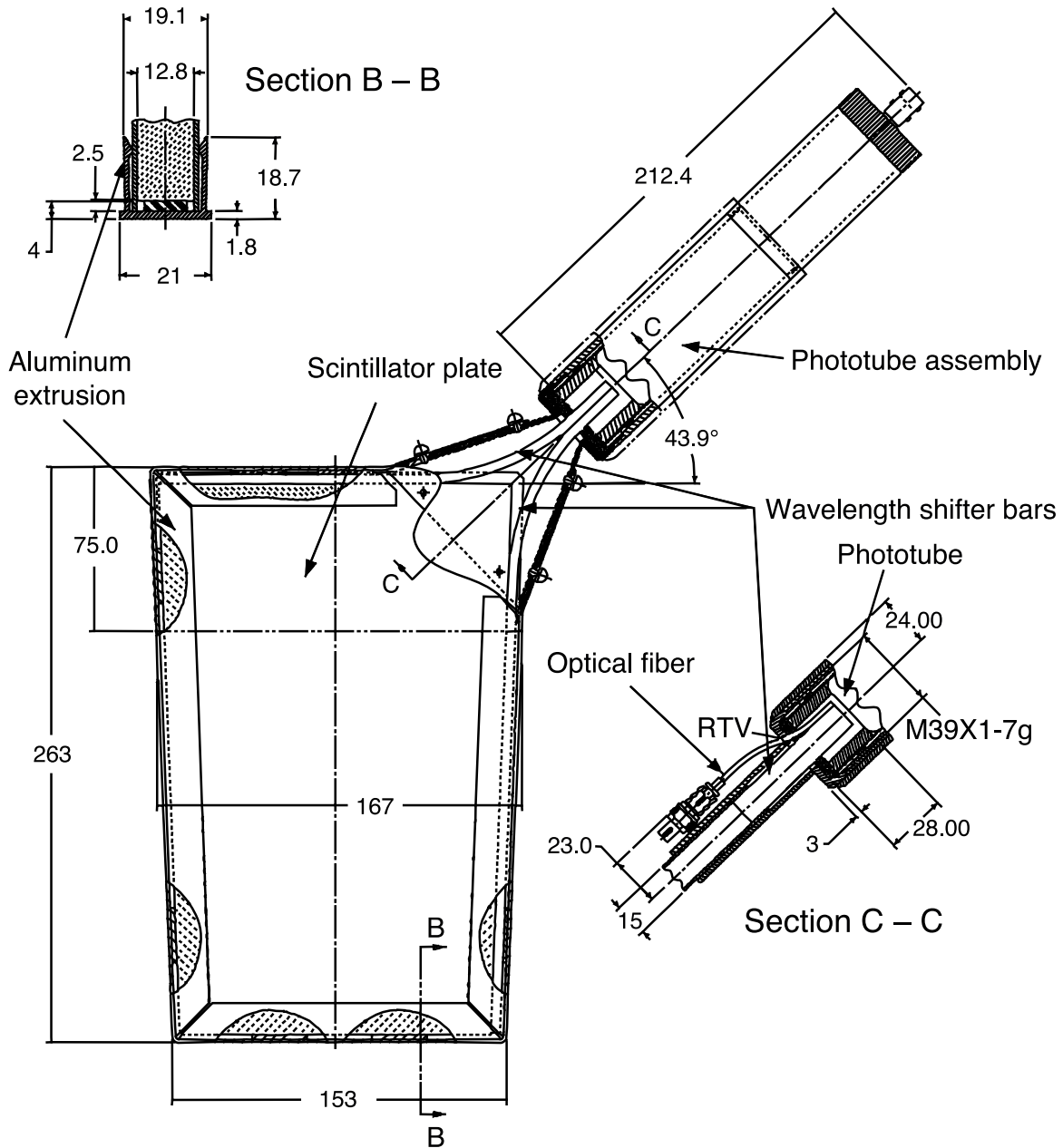


Fig. 14. The design of a pixel scintillation counter. Dimensions are given in mm.

counters. A resistive phototube base optimized for high gain and high time resolution is mounted at the end of the phototube.

The counters are installed on the frames using a “fish scale” design as shown in Fig. 15. On the flat support frame, counters are tilted and supported by aluminium mounting brackets to achieve gapless coverage. All four edges of a counter overlap with the edges of neighboring counters. This novel design makes the procedure for assembling the pixel counter octants straightforward and also made access to phototubes easy. Eight octants are assembled into a

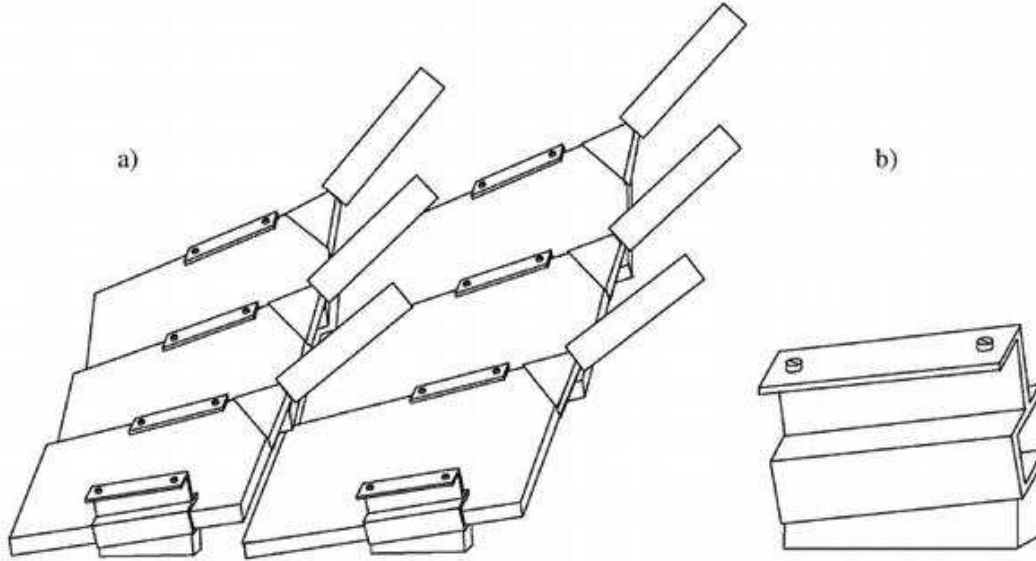


Fig. 15. Fish scale design of the pixel counter mounting: a) counters arrangement; b) an aluminium mounting bracket.

pixel counter layer in the DØ assembly hall and then a complete pixel counter layer is mounted on the detector as shown in Fig. 13. Placement accuracy of the octants is 3 mm and location of each layer is surveyed using optical methods to 1 mm accuracy. After parts of the DØ detector are moved to provide access for service or repairs, the location of moved pixel counter layers is resurveyed with 1 mm precision.

4.3.3 Pixel counter performance

Performance studies have been done at the Fermilab 125 GeV/ c test beam using prototype counters with WLS bar readout. Three different sizes; large ($60 \times 106 \text{ cm}^2$), typical ($24 \times 34 \text{ cm}^2$), and small ($17 \times 24 \text{ cm}^2$); were tested. The measured efficiencies and time resolutions shown in Fig. 16 indicate that the pixel counters' peak efficiency is greater than 99.9% and the time resolution, depending on counter size, ranges from 0.5 ns to 1 ns. The average light yield for 125 GeV/ c pions was measured to be 60 photoelectrons for the large counter and 184 for the small counter.

The production procedure for pixel counters included tests to check size tolerances and light yield measurements using a ^{60}Co radioactive source. Some counters of each size have been tested using cosmic ray muons to calibrate radioactive source measurements to the number of photoelectrons. According to the cosmic test, the number of photoelectrons varies from 240 for small A-layer counters to 70 for the largest C-layer counters. The uniformity of light collection for particles irradiating the full surface of the counters is $\pm 10\%$.

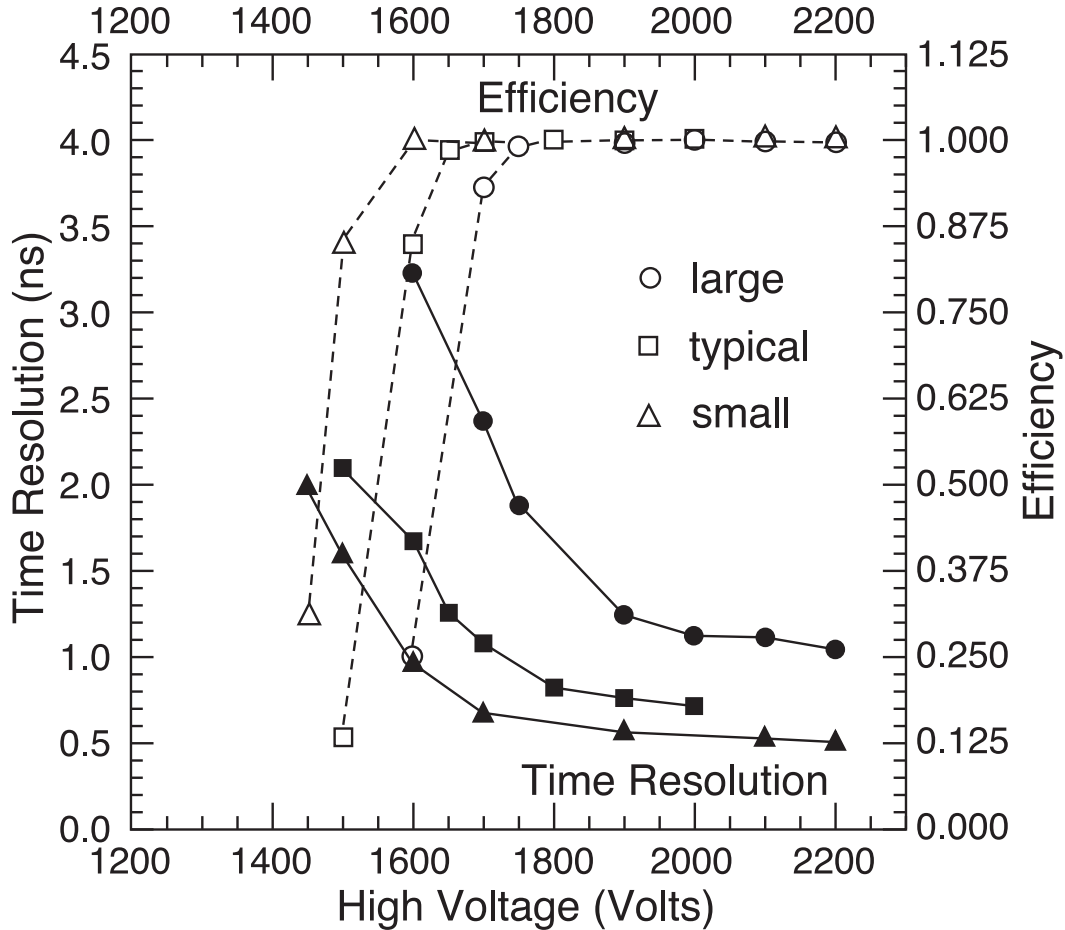


Fig. 16. Efficiency and time resolution of pixel counters. Open signs represent efficiency, closed signs time resolution.

Phototube-to-counter matching has been performed to get close signal amplitudes for each counter connected to the same high voltage power supply in a group of sixteen. This matching included the use of phototube test stand results obtained using LED and ^{60}Co measurements. A final matching check was made by pulse height measurements using a ^{90}Sr beta source. The uniformity of ^{90}Sr amplitudes for groups of sixteen counters achieved using the matching procedure is $\pm 25\%$ (full width). High voltage values selected during the matching process are used for Run II data taking. Uniformity in signal amplitudes as well as a reasonable choice of discriminator thresholds are illustrated in Fig. 17. This figure shows the amplitude distribution for reconstructed muons from proton-antiproton collisions for all 4214 counters. The discriminator threshold is equal to 7 mV or about 25 ADC channels.

Time distributions of pixel counters hits during proton-antiproton collisions run are shown in Fig. 18. The time distribution of muon hits originating in the collision region peaks at zero. The time distribution of events selected with a minimum bias trigger, Fig. 18a, has a broad peak that ranges from zero to

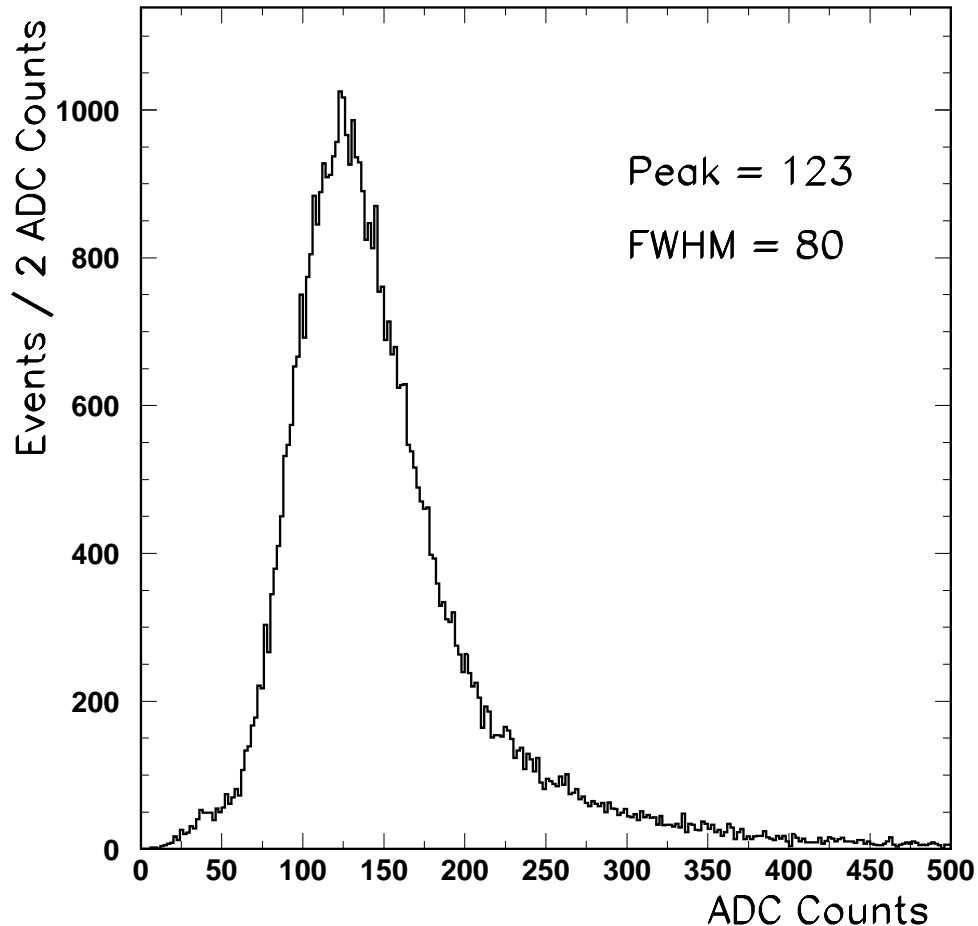


Fig. 17. Muon pulse height distribution for all 4214 pixel counters.

about 70 ns, mainly due to the late-arriving background particles discussed in Section 3. Hits in the 30 ns time gate are sent to the Level 1 trigger. The distribution obtained for events selected with a Level 1 muon trigger, Fig. 18b, shows a peak at zero with some background remaining. The time distribution for hits from reconstructed muon tracks, Fig. 18c, has a clean peak at zero with a time resolution of all counters combined $\sigma_t = 2.2$ ns. These results demonstrate the power of the $D\phi$ forward muon trigger counters for selecting muons in high rate proton-antiproton collisions. In $D\phi$, about 50% of Level 1 forward muon triggered events have a muon reconstructed off-line. Additional rejection from the Level 2 trigger provides the capability of recording forward muon data sample with 80% purity and efficiency of about 90%.

Pixel counters are demonstrating stable operation and high reliability during physics data collection. Figure 19 shows the change in timing of 4214 counters in a one year interval measured by the LED calibration system (see Section

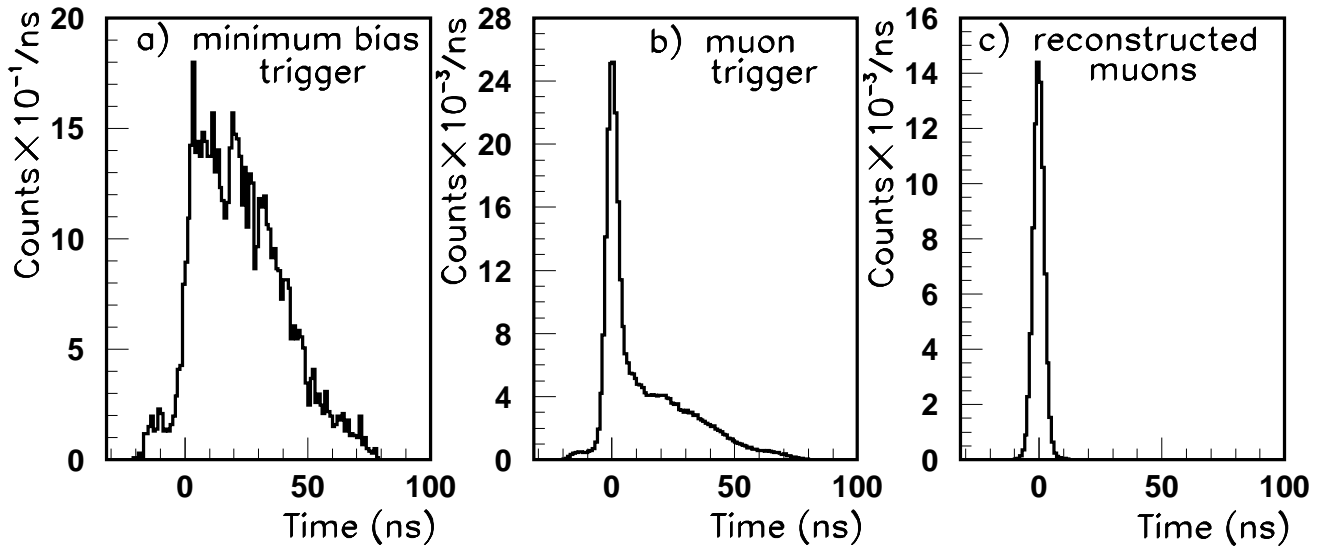


Fig. 18. Time spectra of hits recorded by pixel counters: a) minimum bias trigger; b) muon trigger; c) reconstructed muons.

4.5). Timing is stable within 0.5 ns for all 4214 counters. The stability of the counter amplitudes is also measured by the LED pulser system. We found that amplitude stability is about 10% for individual counters in three years of operation. The stability of the signal amplitude, averaged over all phototubes, is better than 1%.

About fifteen counters have failed over three years of operation primarily due to bad connectors and bases. Long-enough access to the collision hall to repair failed counters occurs every 3–6 months. Movers designed to roll out fully assembled A and B-layers of the pixel counters to provide access to all detector parts for repairs are mounted on the top of the layers. The typical duration of opening/closing a pixel counter layer including repairs is one day. The typical number of non-working counters during physics data taking is about two or 0.05%.

4.4 High voltage and readout electronics for scintillation counters

A total of 46 negative high voltage power supply modules [20] located in a VME crate provide high voltage to the 630 $A\varphi$ counters in the central region. Another 288 negative high voltage power supply modules placed in six VME crates supply high voltage to the 4214 forward pixel counters. The power

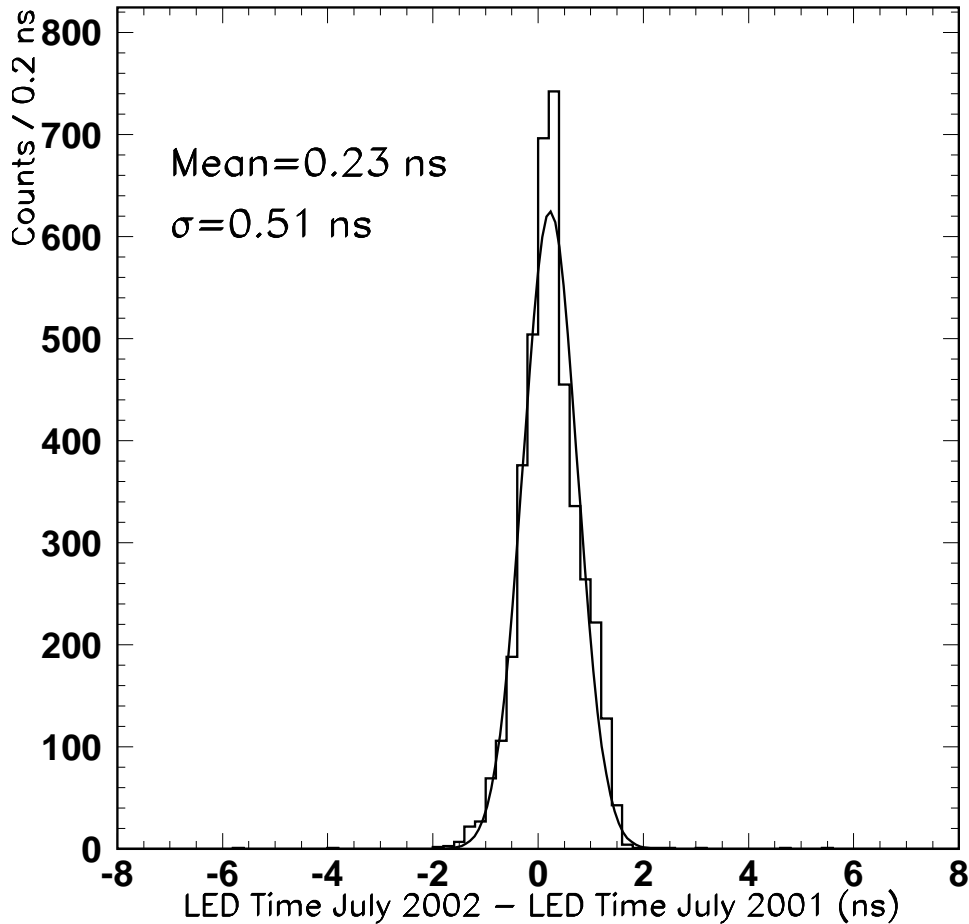


Fig. 19. Timing stability of pixel counters monitored by the LED calibration system over one year.

supplies are rated at 3.5 kV with a maximum current 3.0 mA. Typical current per phototube base is $145 \mu\text{A}$ at 1.85 kV and the total current per power supply is approximately 2 mA.

Signals from phototubes are transmitted via 50Ω coaxial cables to the VME based front-end electronics. This electronics system is discussed in more detail in Section 6. The amplified signals are sent to a 10-bit ADC (one ADC for 16 channels, multiplexed) and to discriminators with a variable threshold (1–250 mV range, individually adjustable for each channel). Discriminated and gated signals from the fired counters are sent to the Level 1 trigger electronics system and to the TDCs with a 1.03 ns bin size. After digitization, the amplitude and time information is sent to the Level 2 trigger system and the DØ data acquisition system.

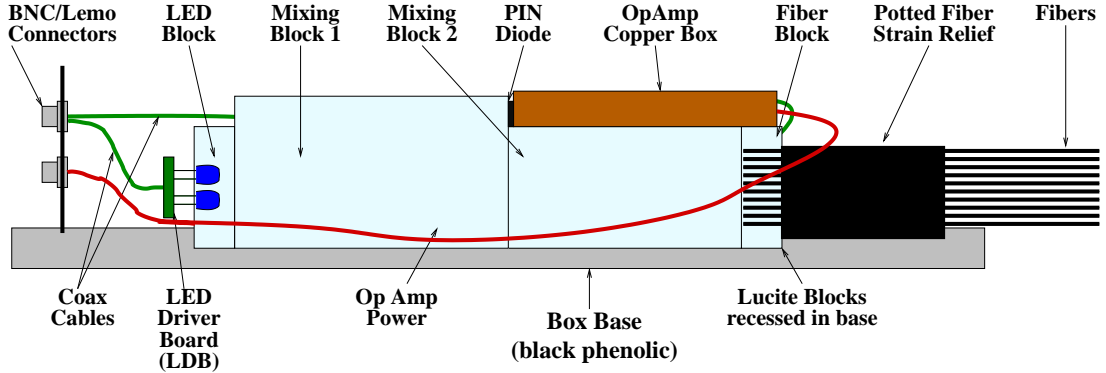


Fig. 20. Design of the LED pulser module.

4.5 Scintillation counters monitoring and calibration

Calibration of various electronic components is performed periodically by using precision pulsers that inject charge directly into electronics inputs. In addition to the electronics calibration, a specially designed LED-based calibration system was developed for monitoring the timing and gain of counters [21]. This system illuminates phototubes with light pulses similar to those of muon signals in amplitude and shape. The light pulses are generated by two types of LED pulser modules. Blue LED pulser modules distribute light signals to 100 separate fiber optics cables which are connected to MELZ phototubes. Modules using blue-green LEDs have 54 fibers to distribute the light pulses which are connected to EMI phototubes.

A sketch of an LED pulser module is shown in Fig. 20. An external pulser sends signals to the LED driver board that generates current pulses to drive the LED. The waveform of the current pulse creates a signal that imitates a muon passing through the counter. To create a uniformly illuminated field, the light pulse generated by the LED goes through two stages of light mixing blocks. A PIN diode is mounted on the first light mixing block to provide an internal measure of the light intensity being distributed to the phototubes. The light pulses are split by the fiber block and fed to phototubes via clear plastic optical fibers with 1 mm diameter. The light splitter is located directly downstream of the second mixing block as shown in Fig. 20. An optical connector is mounted on each counter for connecting the optical fiber.

The performance of the scintillation counters is monitored on a regular basis during collider runs. Voltages and currents of the phototube high voltage power supplies are checked during every data taking shift using the DØ online monitoring system. Using large samples of muons produced in the proton-antiproton collisions, hit distributions, efficiencies, signal amplitude and tim-

ing distributions of counters are monitored online.

5 Muon tracking system

The Run II DØ muon tracking system consists of the original PDT chambers in the central region and new MDT detectors in the forward region. The muon momentum resolution in the central rapidity region is dominated by the inner tracking system which includes the silicon microstrip tracker and the scintillating fiber tracker. The muon tracking system provides muon identification and an independent, confirming momentum measurement. The MDT system in the forward region plays a more important role in determining the muon momentum for $|\eta| > 1.6$ where the performance of the central tracker is reduced.

5.1 Central muon tracking system

The central muon tracking system consists of 94 PDT chambers with 6624 cells covering the region $|\eta| < 1.0$. As shown in Fig. 1, the PDT chambers are grouped into three layers. The inner A-layer chambers are mounted on the inside surfaces of the central iron toroidal magnet. The B-layer and the C-layer chambers are placed outside the toroidal magnets.

The PDT chambers are assembled from three or four decks of proportional drift tubes [2]. Each proportional drift tube consists of a rectangular shaped aluminium enclosure, an anode wire at the center and two cathode pads above and below the anode wire. The cathode pads are made of thin copper-clad Glasteel [22] strips with etched copper vernier pads to determine the longitudinal position of the muon hits. The copper-clad Glasteel is made of glass-fiber reinforced polyester with catalysts added to promote copper bonding. The Glasteel electrodes outgas and, in a high radiation environment, coat the anode wire with a sheath of insulating material. A procedure for removing the sheath material [23] was developed in Run I that returns the chambers to nominal performance. Because access to the A-layer PDTs is difficult, we replaced the electrodes in those chambers with copper-clad G-10 as part of the Run II upgrade.

A fast, non-flammable gas mixture consisting of 84% Argon, 8% CF₄, and 8% CH₄ is used for the PDT chambers in Run II. The maximum electron drift time in the 10 cm wide drift cell is 450 ns. With this gas mixture, anode wires are operated at 4.7 kV and the cathode pad electrodes at 2.3 kV. The single-wire resolution is approximately 1 mm due to the electron diffusion in

the drift cell with its 5 cm half-cell width and signal amplitude fluctuations.

The total gas volume of the PDT chambers is 10^2 m^3 and the gas mixture is recirculated. The design of the gas circulation system takes into account the outgasing problem due to the Glasteel electrodes in the B and C-layer PDTs by providing two separate gas circulation systems, one for the A-layer PDT chambers and the other for the B and C-layer PDT chambers. The recirculated gas mixture in both systems goes through molecular filters that removes contaminants from the Glasteel electrodes and other sources. Both gas circulation systems are able to circulate the gas mixture rapidly to remove the contaminants. The average flow rate per PDT chamber is 2 liters per minute resulting in one volume change in about 8 hours. The wire cleaning procedure has not been necessary after accumulating 0.8 fb^{-1} luminosity during Run II due to increased gas flow, improved shielding, and installation of G-10 electrodes in A-layer chambers.

5.2 *Forward muon tracking system*

During the Run II upgrade, the original PDT chambers in the forward region ($1.0 < |\eta| < 2.0$) were replaced by a new forward muon tracking system. Increased luminosity and reduced beam bunch spacing are the two main reasons for building this new system. The new $D\bar{O}$ forward muon tracking system is based on a mini drift tube technology similar to the one described in Ref. [24].

5.2.1 *Mini drift tubes*

A cross-sectional view of a mini drift tube is shown in Fig. 21. Each mini drift tube has eight $50\text{-}\mu\text{m}$ gold-plated tungsten anode wires suspended in a comb-shaped thin-wall aluminium profile. The wire tension is 200 g and the wire spacing is 10 mm. The wires are supported by plastic spacers at intervals of one meter. The wall thickness of the aluminium profile is 0.6 mm. A 0.15-mm-thick stainless steel cover, placed on top of the aluminium profile, completes the cathode enclosure for the eight $9.4 \times 9.4 \text{ mm}^2$ drift cells. The metal structure is enclosed in a 1-mm-thick plastic envelope made of polyvinyl chloride (PVC) that provides the electrical insulation for the metal cathode operated at negative high voltage. Two plastic end plugs are bonded to the two ends of the PVC envelope forming a gas-tight enclosure. Fig. 22 shows a mini drift tube with its cover partially removed. The lengths of the tubes range from approximately 1 m to 6 m. The mini drift tubes are operated in the proportional mode and drift times from the anode wires are recorded.

The gas mixture for the MDT system is 90% CF_4 and 10% CH_4 . The selection of this mixture as the working gas for the MDTs was based on the

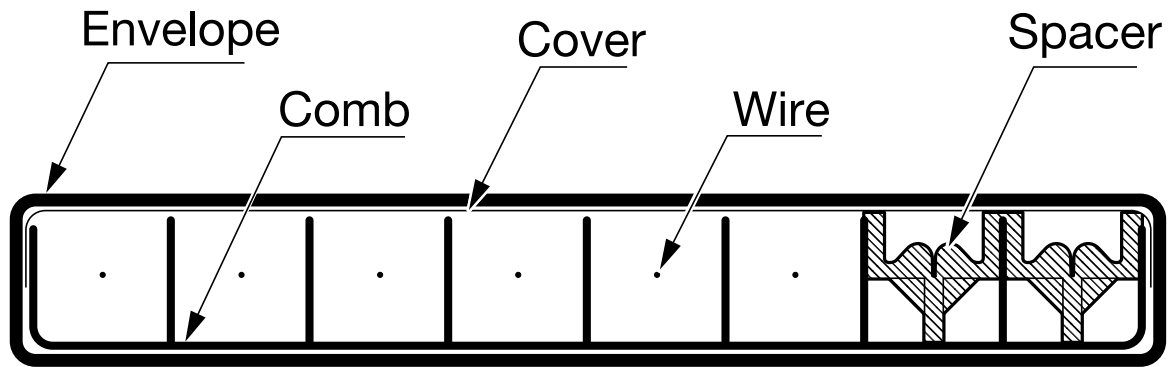


Fig. 21. The cross-sectional view of a mini drift tube.

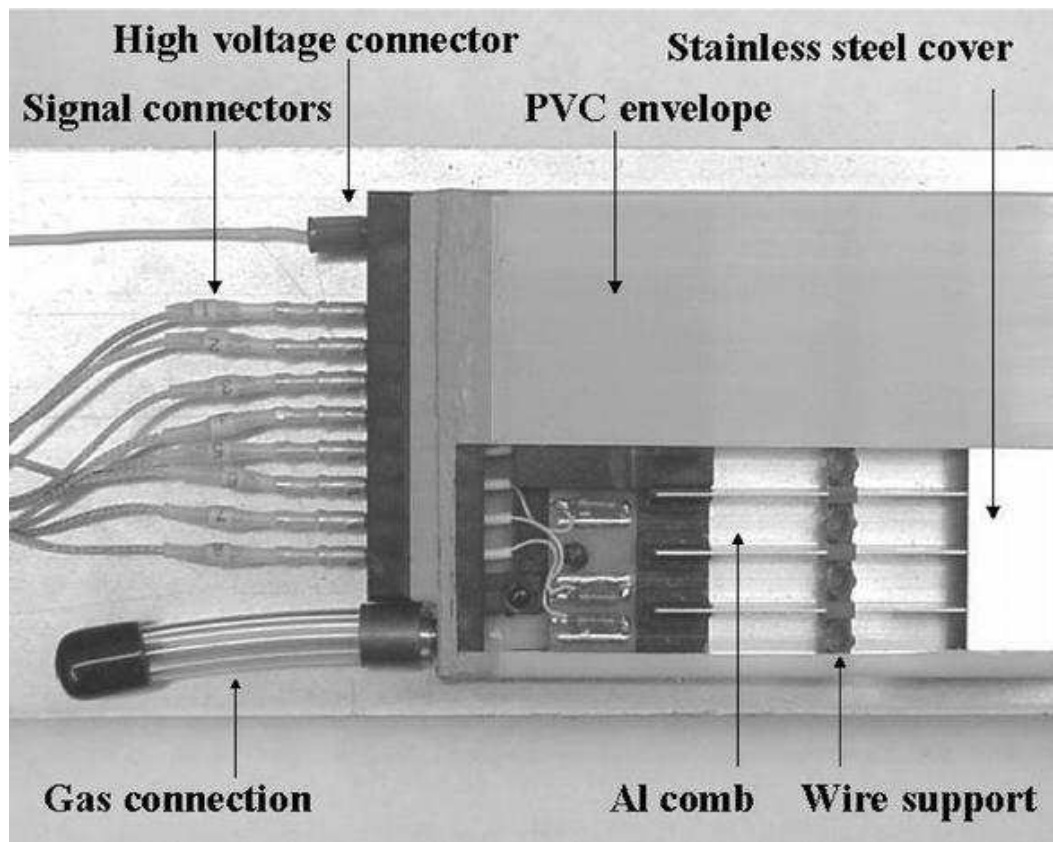


Fig. 22. The signal and high voltage end of a mini drift tube with cover partially removed.

following considerations. The gas mixture must be non-flammable for safety reasons. The electron drift speed must be fast enough so that the maximum drift time plus the signal propagation time in the longest drift tube is less than the beam bunch spacing. And, the gas mixture must not result in wire aging in a high radiation environment. The 90% CF_4 /10% CH_4 mixture satisfies all these requirements. The muon efficiency plateau is measured to be approximately 0.40 kV (from -3.0 kV to -3.4 kV). The operating MDT voltage is -3.2 kV with a signal discrimination threshold of $2.0 \mu\text{A}$ and a muon

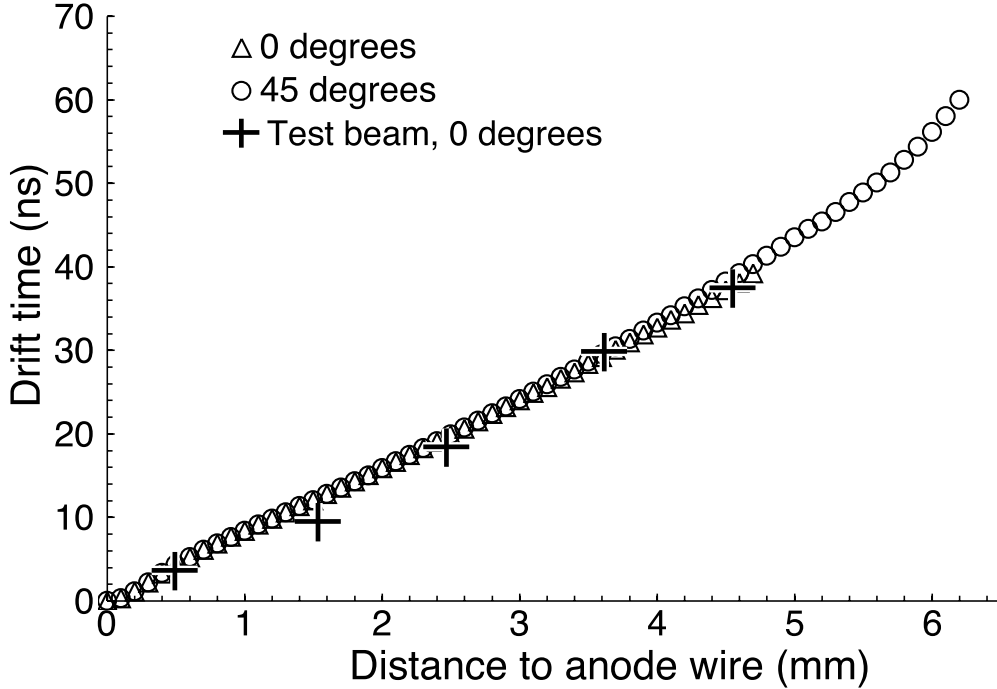


Fig. 23. Time-to-distance relation for a mini drift tube. The data labeled as triangles and circles are calculated using GARFIELD. The gas mixture is 90% CF_4 and 10% CH_4 and the cathode voltage is -3.2 kV.

detection efficiency greater than 99%.

Aging tests using radioactive sources have shown no detectable aging effects up to 2.5 C/cm accumulated charge on the anode wire. The total accumulated charge for an integrated luminosity of 10 fb^{-1} is expected to be 0.02 C/cm in the MDTs closest to the beam line.

The electron drift time-to-distance relations calculated by the simulation program GARFIELD [25] and experimentally measured are shown in Fig. 23. To investigate the effect of the square cell geometry, the time-to-distance relations were calculated for two drift paths in a drift cell of the MDT. The data labeled with triangles is for tracks that enter the drift cell perpendicular to the surface of the MDT detector plane. The data labeled with circles is for tracks entering along the diagonal direction of the square cell. The maximum drift distance for 0° tracks is 4.7 mm and the calculated maximum drift time is approximately 38 ns. In the 45° case, the maximum drift time for a drift distance of 6.2 mm is about 60 ns. As shown in Fig. 23, the 0° and 45° curves mostly coincide. This implies that different drift fields in these two directions do not significantly affect the electron drift velocity.

Table 3
Channel count for MDT system.

Layer	A	B	C
Number of MDTs	2048	1944	2088
Number of readout channels	16384	15552	16704
η_{\max}	2.15	2.13	2.16
η_{\min}	1.00	1.02	1.13
Maximum tube length (mm)	3571	5066	5830

5.2.2 MDT system design and construction

The MDT system consists of 6080 mini drift tubes that are assembled into six layers of eight octants each. The total number of anode wires is 48,640. Vigorous quality assurance procedures were implemented at every level of the construction. Before the MDTs were assembled into octants, the anode wire tension, the response uniformity, and the gas tightness were tested. Cosmic ray tests were performed for every MDT to verify its operational characteristics. MDTs that passed quality tests were mounted on frames made of aluminium honeycomb plates and then assembled into octants. The flatness of the aluminium honeycomb plates was required to be within 1 mm over their entire surfaces. The MDTs are held in place by rows of plastic blades. The spacing of the blades is tightly controlled to ensure the tube's placement accuracy. The outside surfaces of an octant are enclosed by thin aluminium sheets that form a Faraday cage and also protect the MDTs mechanically. Gas tightness and cosmic ray tests were performed for every completed octant.

The forward muon tracking system is arranged as A, B and C-layers similar to the configuration of the pixel counter system discussed in Section 4.3.1. Each layer has eight octants. An A-layer octant contains four planes of tubes with each plane having 32 MDTs. The four tube planes are mounted on two aluminium honeycomb frames. Each B-layer octant has three MDT planes and each plane consists of 44 MDTs, except the two bottom octants that have only 30 MDTs. Each C-layer octant has three planes and each plane consists of 48 MDTs, except the two bottom octants that have only 30. The parameters of the MDT system are summarized in Table 3.

A-layer MDT octants are mounted on the inside faces of the end iron toroids and B-layer octants are mounted on the outside faces. The C-layer octants are mounted on two steel structures placed against the walls of the collision hall (Fig. 1). Placement accuracy of MDT octants on the detector is 5 mm. After octants are mounted in the detector, their locations are measured using an optical survey with 0.5 mm precision. After parts of the DØ detector are moved to provide access for service or repairs, the position of MDT octants is re-

surveyed. The MDTs in each layer are oriented in such a way that the bending angle in the toroid magnet of a muon's trajectory can be measured precisely. A crude determination of the muon trajectory in the direction transverse to the magnetic bend direction is provided by the pixel scintillation counters.

Amplifier-discriminator boards (ADBs) [26] are mounted near the edge of the octant closest to the MDT signal end plug on the aluminium covers. The ADBs are protected and shielded by aluminium enclosures. Each ADB has 32 channels that amplify and discriminate the signals from the 32 anode wires. The output differential signals of the ADBs are sent via flat cables to digitization boards in VME crates.

5.2.3 Gas system

The MDT gas system consists of the gas recirculation, flow rate monitoring, and gas purification systems [27]. The total gas volume of the MDT system is 18 m³. The CF₄/CH₄ mixture is recirculated to minimize operating cost with a flow rate of 6 l/min. This flow rate provides a gas exchange rate of approximately 0.5 volumes per day. The gas output pressure of the octants is kept to approximately 5 cm of H₂O above atmospheric pressure. A gas purification system that removes water vapor and oxygen in the return gas mixture prevents the accumulation of such impurities during gas circulation. Fresh gas is added into the MDT gas circulation at an average rate of 0.5 l/min to compensate for losses due to small leaks in the system and to refresh the gas.

The gas flow through the MDTs in each plane (up to 48 tubes) is in series. Gas flow sensors are installed at the gas inlet and outlet of each MDT plane within an octant to monitor the flow rates. There are 160 planes of MDTs (four in each A-layer octant and three in each B and C-layer octant) and 320 gas flow sensors are used. The sensors are model AWM3300V mass flow sensors made by Honeywell Inc. [27]. These flow sensors are mounted on the octants. The flow rates of the 48 MDT octants can be individually adjusted by precision valves.

5.2.4 MDT system performance

The MDT muon tracking efficiency measured during collider operation is greater than 99% in the active gas volume of the tube cells. The average per plane muon hit detection efficiency is $(95 \pm 2)\%$. Inefficiency of the MDT planes is mainly caused by geometric factors that include the 0.6 mm thick aluminium comb wall between drift cells and gaps between adjacent tubes (1 mm thick plastic blade plus the walls of the two tubes). At the beginning of operation in 2001, 0.16% of the MDT system channels were non-functional.

After three years of running, the percentage of dead channels has increased to approximately 0.24%. The major sources of non-working channels are broken and noisy wires.

The coordinate accuracy of the MDT system is limited by the 18.8 ns bin size of the drift time digitization. The design goal of the single cell resolution of the MDT system is 1 mm. The single cell resolution can be measured by fitting a straight line through the three muon hits detected in the three or four planes of an MDT octant. Coordinate resolution obtained using this method is $\sigma = 0.8$ mm.

6 Muon front-end and readout electronics

Design of the Run II front-end and readout muon electronics is based on the following requirements:

- the ability to run with a 132 ns bunch spacing (original specification for Run II, later changed to 396 ns)
- continuous digitization of the input signals
- digital pipelines to store data during the Level 1 trigger decision time
- deadtimeless Level 1 trigger processing
- use of DSPs for data preprocessing and data buffer management
- high speed serial cable links to transfer trigger and data information
- stand-alone calibration and test capabilities.

All muon detector subsystems have a common readout interface based on a commercial VME processor and two custom VME modules: the muon readout card (MRC) and the muon fanout card (MFC) described in Ref. [28]. The readout electronics is housed in eighteen 9U×280 mm VME crates. A block diagram of the muon electronics is shown in Fig. 24.

The DØ trigger framework (TFW) is the source of timing and control signals for the entire experiment. The detector electronics is subdivided into Geographic Sectors (GS) associated with the front-end detector electronics. Timing and trigger information is distributed to the GSs using 1 Gbit/s serial links (SL1). Each link is capable of transferring 96 bits of information within 132 ns. A similar 1 Gbit/s link is used to transfer information from the front-end electronics to the Level 1 trigger system.

All of the front-end crates are synchronized to the accelerator RF frequency (53.1047 MHz) allowing for accurate timing of the electronics to the collider beam. Detector signals are continuously digitized by charge-integrator/ADC or discriminator/time-digitizer signal processing chains and stored in circular

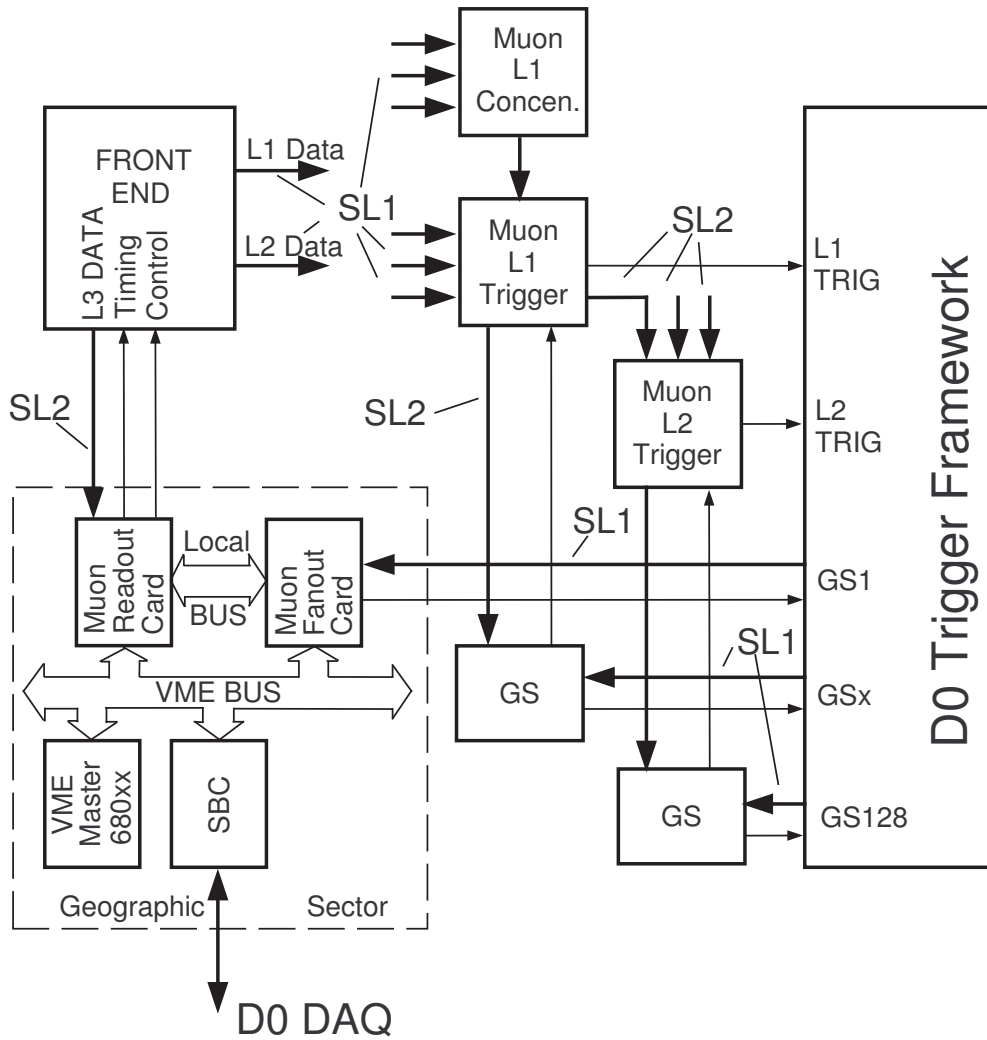


Fig. 24. Block diagram of the DØ muon readout electronics.

buffers (pipelines) thus achieving deadtimeless operation [28]. The depth of the buffers is adjusted to match the propagation time of the Level 1 trigger decision. Upon arrival of the Level 1 trigger decision, the stored information is copied to the Level 1 FIFO and awaits the next level of the trigger decision. Depending on the Level 2 trigger decision generated by the TFW, the stored information is processed and transferred to the MRC using a 160 Mbit/s serial link (SL2) or discarded. From the MRC memory, event data is sent to the DØ data acquisition system under control of the VME processor to be analyzed by the Level 3 trigger system before selected events are written to tape.

Collider beam bunches are separated by 21 periods of the RF frequency (396 ns). Seven periods of the RF frequency (132 ns) are used as a unit of TFW timing. There are 159 such intervals around one accelerator orbit starting from the beginning of the synchronization gap (Fig. 25). The DØ exper-

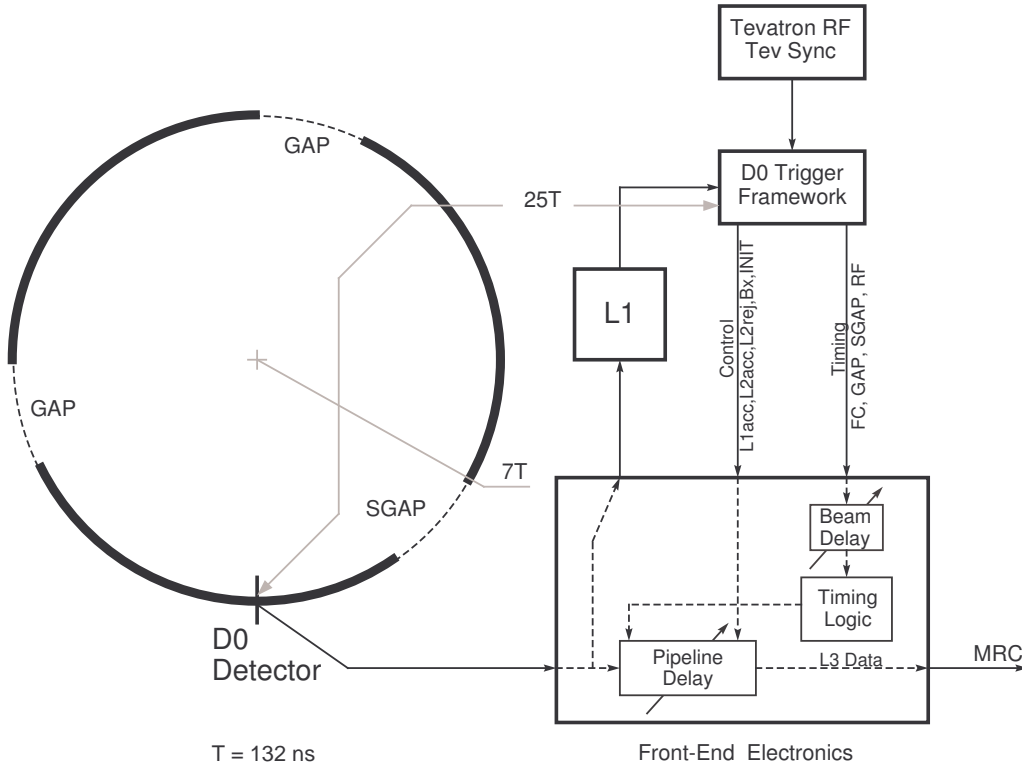


Fig. 25. DØ muon detector timing. The circle represents the Tevatron ring filled with particle bunches (solid line) with abort and synchronization gaps.

iment uses the Tevatron crossing number scheme to guarantee proper event synchronization. The seventh crossing after the beginning of synchronization gap contains the first particle bunch. The specified delay between a beam collision and the arrival of the trigger signal from the Level 1 system at the TFW input is twenty-five 132 ns intervals.

One of the important features of the muon electronics design is the achievement of proper synchronization of all the elements of the system. To do this, the muon electronics has two variable digital delays implemented in the front-ends. The DØ TFW receives timing information from the accelerator and generates two sets of timing signals representing the timing structure of the colliding beams: one for its own logic and the other for the DØ detector subsystems (see Fig. 25). The latter has a timing offset to compensate for propagation delay in the cables. The offset is chosen so that timing signals arrive at the front-end electronics at approximately the same time as the corresponding detector signals arrive at the electronics inputs. Fine adjustments have to be done using the so-called beam delay. The pipeline delay setting is affected by the beam delay setting and vice versa. To overcome this difficulty, a procedure involving the internal test pulser is used to set the correct pipeline delay value. After the pipeline delay is selected, the beam delay value is adjusted using beam data to compensate for cable delay differences. Any change in the

beam delay adjustment must be followed by an equal change of the pipeline delay.

The muon front-end electronics includes PDT electronics, scintillation counter electronics, and MDT electronics. The readout controllers for these subsystems have similar designs and an Analog Devices ADSP-21csp01 50 MHz DSP. The time digitizers used in the PDT and scintillation counter electronics are based on Toshiba TMC-TEG3 chips [29].

The PDTs have up to 96 signal wires per chamber. Attached to these chambers are four 24-channel front-end boards (FEB) and one control board (CB). The FEBs digitize the time of arrival of the wire signal and the charge of the pad electrodes. The TMC chip is running at $RF/2$ frequency, providing 1.18 ns bin resolution. The digital delays and Level 1 FIFO buffers are also located on FEBs. Each FEB is connected to the CB via an 18 bit uni-directional data bus and an 8-bit control bus. The CB has a readout controller, which fetches data sequentially from each FIFO. Upon receiving a Level 1 trigger, the controller accepts data and stores it in the DSP memory.

The front-end electronics of the scintillation counter system includes 48-channel 9U VME scintillation counter front-end cards (SFE). These cards measure the arrival time of the scintillation counter signals. The TMC chip runs at $4/7$ RF frequency with a timing bin resolution of 1.03 ns. There are three charge integrators on each SFE with outputs digitized by ADCs. Each integrator input can be connected (multiplexed) to one of sixteen input channels to measure pulse height from the photomultiplier tube. The Level 1 FIFO buffers are read out by a DSP-based readout controller over a custom high speed data bus using the VME J2 backplane. Each VME crate houses up to ten SFE cards, the readout controller card, LED calibration electronics, and a Motorola 68EC040-based [30] VME processor to provide parameters downloading and testing.

The front-end electronics cards (ADB) of the MDTs are located on the MDT chambers near the signal ends. Each ADB has 32 channels of amplifiers and discriminators. The digitization of the MDT wire signals is accomplished by a VME-based system. The digitization cards are 9U VME cards. Each card contains 192 channels. The MDT digitizing cards (MDCs) perform a low resolution (18.8 ns/bin) measurement of the drift time. The MDC also has a digital pipeline and Level 1 FIFO buffers to store event data. A DSP-based readout controller reads out data over a custom VME J3 back plane. The MDT crates can accommodate up to twelve MDCs, a readout controller, and a VME processor to perform tasks similar to those of the scintillation counter system.

Table 4
Channel counts of the DØ Run II muon system.

Item	Layer A	Layer B	Layer C	Total
PDT chambers	18	38	38	94
Drift cells	1584	2424	2616	6624
Central scintillation counters	630	96	276	1002
PMTs	630	192	552	1374
MDT octants	16	16	16	48
Drift cells	16384	15552	16704	48640
Pixel octants	16	16	16	48
Counters	1518	1420	1276	4214

7 Summary

This paper describes the upgraded DØ muon system for Run II of the Fermilab Tevatron collider. In the central region, a new $A\varphi$ trigger counter system is located inside the central iron toroid and the angular coverage of the counter system outside the iron toroids is improved. In the forward region, a new scintillation trigger counter system and a new mini drift tube tracking system are installed. All muon electronics is upgraded. The new shielding system is an important component of the muon upgrade that ensures that the DØ muon system can operate efficiently in the background environment of a hadron collider. The channel counts for the Run II DØ muon system are given in Table 4. Because of these upgrades, the muon identification and triggering capability is significantly enhanced, compared to that of the DØ Run I muon detector. The performance of the DØ Run II muon detector during physics data collection demonstrates that design goals of the muon detector upgrade have been accomplished [31–33]. The invariant mass distribution of dimuon pairs corresponding to an integrated luminosity of 0.20 fb^{-1} is shown in Fig. 26 and demonstrates the powerful triggering and identification capabilities of the Run II DØ muon system.

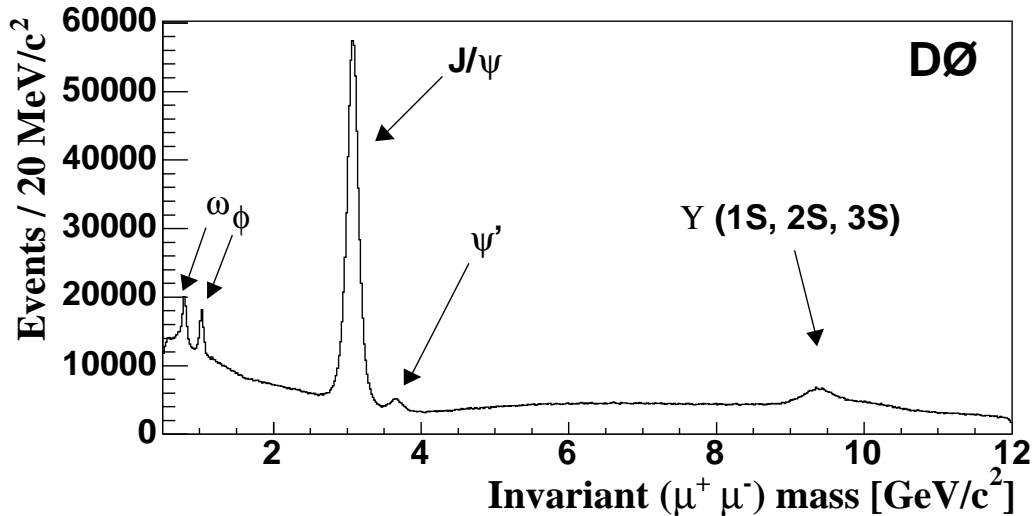


Fig. 26. Invariant mass of $\mu^+\mu^-$ pairs detected by the DØ experiment in Run II.

References

- [1] S. Abachi, et al., Nucl. Instr. and Meth. A 338 (1994) 185.
- [2] C. Brown, et al., Nucl. Instr. and Meth. A 279 (1989) 331;
Yu. Antipov, et al., Nucl. Instr. and Meth. A 297 (1990) 121.
- [3] V. Abramov, et al., Nucl. Instr. and Meth. A 419 (1998) 660.
- [4] R. Yamada, et al., IEEE Trans. Magnetics 28 (1) (1992) 520.
- [5] Vector Fields Limited, 24 Bankside, Kidlington, Oxford, OX5 1JE, England.
- [6] N. V. Mokhov, The MARS Code System User's Guide, Fermilab-FN-0628, 1995;
N. V. Mokhov, Status of MARS Code, Fermilab-Conf-03/053, 2003;
<http://www-ap.fnal.gov/MARS/>.
- [7] J. M. Butler, et al., Reduction of Tevatron and Main Ring Induced Backgrounds in the DØ Detector, Fermilab-FN-0629, 1995.
- [8] H. T. Diehl, Aggressive Shielding Strategies for the Muon Upgrade, DØ Note 2713, Fermilab, 1995;
V. I. Sirotenko, D. S. Denisov, H. T. Diehl, DØ Shielding Optimization: Simulations and Measurements, DØ Note 3417, Fermilab, 1998.
- [9] N. V. Mokhov, V. I. Sirotenko, Possible Minimal Solutions for DØ Detector Shielding Based on GCALOR and MARS13 Simulations, DØ Note 2601, Fermilab, 1995.
- [10] G. Cosmo, S. Giani, N. J. Høimyr, et al., CERN-LHCC-95-70, CERN, Geneva, Switzerland, 1995.
- [11] A. Bross, et al., The DØ Scintillating Fiber Tracker, Proceedings of the SCIFI 97 Conference, p. 221, South Bend, Indiana, November, 1997.

- [12] B. S. Acharya, et al., Nucl. Instr. and Meth. A 401 (1997) 45;
V. Abramov, et al., IEEE Trans. Nucl. Sci. NS-46 (4) (1999) 865.
- [13] EMI 9902K, Thorn EMI Gencom Inc., 23 Madison Rd., Fairfield, NJ 07006.
- [14] Bicron Corporation, 12345 Kinsman Rd, Newbury, OH 44065-9677.
- [15] V. Evdokimov, Light Collection from Scintillation Counters using WLS Fibers and Bars, Proceedings of the SCIFI 97 Conference, p. 300, South Bend, Indiana, November, 1997.
- [16] MELZ, Electrozavodskaya str., 23, Moscow, Russia, 105023.
- [17] Dupont De Nemours & Co., 705 Canter Rd., Rt. 141, Wilmington, DE 19810-1025.
- [18] V. Bezzubov, et al., Fast Scintillation Counters with WLS Bars, Proceedings of the SCIFI 97 Conference, p. 210, South Bend, Indiana, November, 1997.
- [19] S. Belikov, et al., Physical Characteristics of the SOFZ-105 Polymethyl Methacrylate Secondary Emitter, Instruments and Experimental Technique, 36 (1993) p. 390.
- [20] S.-C. Ahn, et al., IEEE Nucl. Sci. Symposium, Vol. 2 (1991) 984.
- [21] P. Hanlet, et al., Nucl. Instr. and Meth. A 521 (2004) 343.
- [22] Glasteel Tennessee, Inc., 175 Commerce Rd, Collierville, TN 38017.
- [23] T. Marshall, Nucl. Instr. and Meth. A 515 (2003) 50.
- [24] W. Busza, Nucl. Instr. and Meth. A 265 (1988) 210.
- [25] R. Veenhof, GARFIELD, A Drift Chamber Simulation Program, CERN Program Library. <http://garfield.web.cern.ch/garfield/>
- [26] G. D. Alexeev, et al., Nucl. Instr. and Meth. A 473 (2001) 269.
- [27] T. Zhao, et al., IEEE Trans. Nucl. Sci. NS-49 (3) (2002) 1092.
- [28] B. Baldin, et al., IEEE Trans. Nucl. Sci. NS-42 (4) (1995) 736.
- [29] Y. Arai, F. Sudo and T. Emura, Developments of time memory cell VLSI's, KEK Preprint 93-49, 1993.
- [30] <http://gocct.com/products/vme/motorola680x0.htm>
- [31] V. M. Abazov, et al., Phys. Rev. Lett. 93 (2004) 141801.
- [32] V. M. Abazov, et al., Phys. Rev. Lett. 93 (2004) 162002.
- [33] V. M. Abazov, et al., hep-ex/0409043; Fermilab-Pub-04/225-E (2004).