



Classic



Innovative



Versatile

# Microwave Push-on Interconnects



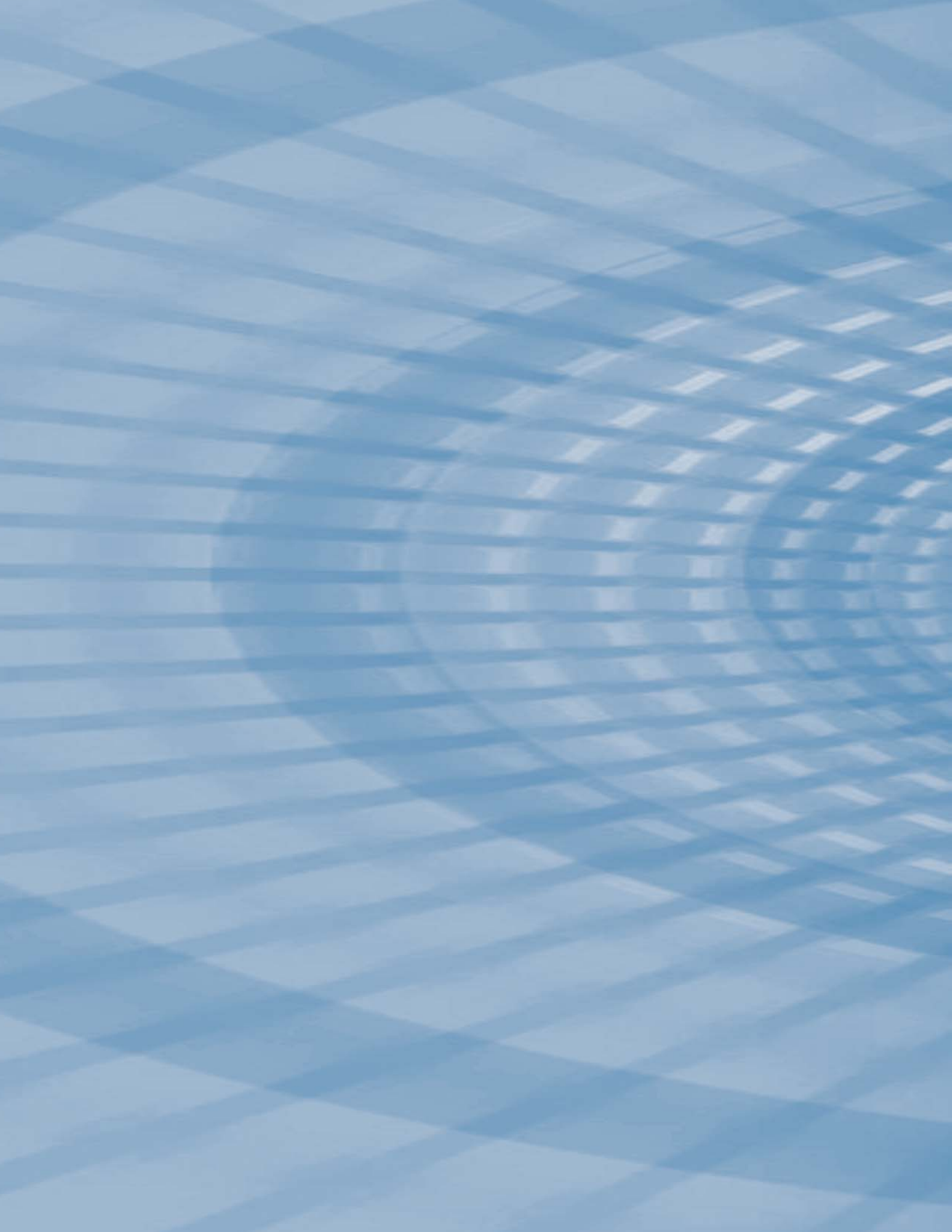
Simplified



Integrated



Adaptable



# Table of Contents

## General Information

- II Who We Are
- III Custom Designs
- IV Reference Guide

## GPO® Products

- 2 GPO Specifications
- 3 Flange Mounts
- 5 Thread-In Shrouds
- 9 Press-In Shrouds
- 11 Hermetic Shrouds
- 13 PCB Mounts
- 16 Right Angle PCB Mounts
- 17 Edge Mounts
- 19 Surface Mounts
- 21 Cable Connectors
- 34 Loads
- 35 Hermetic Seals
- 35 Blindmate Interconnects
- 38 Pins

## GPPO® Products

- 40 GPPO Specifications
- 41 Flange Mounts
- 41 Thread-In Shrouds
- 44 Hermetic Shrouds
- 46 PCB Mounts
- 48 Edge Mounts
- 51 Surface Mounts
- 52 Cable Connectors
- 60 Loads
- 61 Hermetic Seals
- 62 Blindmate Interconnects
- 64 Pins

## G3PO™ Products

- 66 G3PO Specifications
- 67 PCB Mounts
- 67 Edge Mounts
- 68 Surface Mount
- 69 Cable Connectors
- 70 Loads
- 71 Blindmate Interconnects
- 72 Pin

## GMS® Products

- 74 GMS Specifications
- 75 Flange Mounts
- 79 Thread-In Shrouds
- 80 Edge Mount
- 81 Cable Connectors
- 91 Loads
- 92 ESD

## SGMS™ Products

- 95 Flange Mounts
- 96 Thread-in Shrouds
- 97 Cable Connectors
- 98 Blindmate Interconnect

## Multiposition Block Products

- 100 GPO Multiposition Blocks
- 101 GPPO Multiposition Blocks
- 107 G3PO Multiposition Blocks
- 109 SGMS Multiposition Blocks

## Adapters

- 112 GPO Within Series Adapters
- 114 GPO Between Series Adapters
- 123 GPPO Within Series Adapters
- 123 GPPO Between Series Adapters
- 128 G3PO Adapters
- 128 GMS Adapters
- 134 GMS ESD Adapters

## Tools

- 138 GPO Tools
- 143 GPPO Tools
- 146 G3PO Tools
- 147 GMS Tools
- 148 Miscellaneous Tools

## Appendix

- 150 Cable Assemblies
- 151 Test Capabilities
- 152 Connector Evaluation Kits
- 153 Adapter Matrices
- 154 Assembly Procedures
- 159 Application Notes
- 170 Index

## Who We Are

With 50 years of leading-edge design experience, Corning Gilbert exceeds industry standards with high performance coaxial connectors for broadband telecommunication and microwave systems. Corning Gilbert pioneered the GPO® GPPO® and G3PO™ connectors—setting the industry gold standard for coaxial push-on interconnects. First developed for demanding military applications, these systems are increasingly seen as the high frequency interconnects of choice for military, satellite, wireless and telecommunications applications.

Our goal is to provide design engineers with high performance interconnect solutions that can be easily integrated into today's sophisticated applications. Our dedicated facility for microwave products enables us to provide exceptional customer and design services with excellent delivery and unparalleled quality. Our manufacturing facility is designed to provide both design flexibility and cost effective components that are controlled to extremely tight tolerances.

Corning Gilbert operates its manufacturing facilities under the ISO 9001 quality system. Headquartered in Glendale, AZ, its state-of-the art facilities adhere to stringent production guidelines to provide our customers with the highest level of reliability, consistency and quality, while meeting applicable military and commercial standards.

Corning Gilbert is a wholly owned subsidiary of Corning Incorporated. Established in 1851, Corning creates leading edge technologies for the fastest

growing markets of the world's economy. Corning manufactures optical fiber, cable and photonic products for the telecommunications industry, and high performance display components for computers, television, and their communications related industries. Corning also uses advanced materials to manufacture products for scientific, semiconductor and environmental markets.

## Customer Care

Our knowledgeable staff is available Monday - Friday to provide prompt assistance with your order placement and shipment inquiries. Let our customer care team answer your questions or suggest alternative, efficient ways of achieving your interconnect objectives.

phone: 800 651 8869 (U.S. and Canada)  
(01) 623 845 5613 (International)  
e-mail: [pushon-info@corning.com](mailto:pushon-info@corning.com)

## Custom Designs

Custom designs are supported by a team of innovative engineers, technicians, and machinists at Corning Gilbert. Our highly skilled staff will help you define your requirements and customize a design for the application. We understand that the goal is to quickly design and manufacture these specialized interconnects for electrical, mechanical, and environmental evaluation.



Corning Gilbert offers various custom design solutions including multiposition blocks, hermetic shrouds, cable connectors, PCB mounts, blindmate interconnects (BMI), loads, and adapters. Special packaging is also available, such as custom trays and tape & reel for automated pick and placement. Other custom options include selective plating and solder dipping. A typical design cycle begins with a discussion between the applications engineer and the customer to identify the interconnect requirements. Our library of designs are used as a basis for assessing your needs so that your exact requirements may be met with the highest efficiency. After receipt of order, our design engineer will create 3D CAD models which are optimized for electrical performance using electromagnetic simulation software. This allows tuning for a specific frequency range or broadband performance. Complex designs may require mechanical analysis using finite element analysis (FEA) software.

Complete with high precision Swiss turning centers and CNC mills, our dedicated machine shop is equipped to produce the custom designs you need. We also maintain a plating shop which enables same-day passivation or plating of metallic components. Many validation tests are performed in-house. Electrical tests include voltage standing wave ratio (VSWR), dielectric withstanding voltage (DWV) and insulation resistance. Mechanical tests include durability and mating forces. Environmental tests include thermal cycling, humidity, and salt spray. Contact our customer care team for more information.

## How to Reach Us

### Corning Gilbert Inc.

#### Corporate Headquarters

5310 West Camelback Rd.

Glendale, AZ 85301 U.S.A.

phone: 800 651 8869 (U.S. and Canada)  
(01) 623 845 5613 (International)

fax: (01) 623 934 5160

website: [www.corning.com/corninggilbert](http://www.corning.com/corninggilbert)

e-mail: [pushon-info@corning.com](mailto:pushon-info@corning.com)

### International Customer Service Center at Corning Cabelcon

Industriparken 10

4760 Vordinborg

Denmark

phone: +(45) 55 98 55 99

fax: +(45) 55 98 55 04

website: [www.cabelcon.dk](http://www.cabelcon.dk)

e-mail: [cabelcon@cabelcon.dk](mailto:cabelcon@cabelcon.dk)



# Reference Guide

## Symbols

<b>CC</b>	Center Conductor	<b>FD</b>	Full Detent
<b>LD</b>	Limited Detent	<b>mm</b>	Millimeter
<b>MP</b>	Microporous	<b>PCB</b>	Printed Circuit Board
<b>R/A</b>	Right Angle	<b>R/P</b>	Reference Plane
<b>S/R</b>	Semi-Rigid	<b>SB</b>	Smooth Bore
<b>SQ</b>	Square	<b>Ø</b>	Diameter
<b>RF</b>	Radio Frequency	<b>GHz</b>	Gigahertz
<b>dB</b>	Decibels	<b>VSWR</b>	Voltage Standing Wave Ratio
<b>CM</b>	Catchers Mitt		

## Standard Tolerances

All dimensions are in inches, interpretation per ANSI Y14.5.

.XX ± .010

.XXX ± .005

Fractions ± 1/64

Angular ± 5°

Typical machine surface finish 63 micro inches

## Common Materials and Finishes

- Beryllium copper per ASTM B 196 and/or ASTM B 197. Gold plate per ASTM B 488 over electrolytic nickel per SAE AMS QQ N 290.
- CRES 303 per ASTM A 484 and ASTM A 582 or ASTM A 555 and ASTM A 581. Passivate per SAE AMS 2700.
- Brass per ASTM B 16. Gold plate per ASTM B 488 over electrolytic nickel per SAE AMS QQ N 290.
- Virgin TEFLON® PTFE fluorocarbon per ASTM D 1710.
- KOVAR® Iron-nickel-cobalt sealing alloy per ASTM F 15. Gold plate per ASTM B 488 over electrolytic nickel per SAE AMS QQ N 290.
- Corning® 7070 glass.
- Ultem® 1000 (Polyetherimide) per ASTM D 5205.
- Torlon® (Polyamide-Imide) per ASTM D 5204.

## Detent

A captivation system was developed for the GPO®, GPPO®, and G3PO™ interconnect systems that provides predictable levels of retention without the use of bulky coupling nuts. This feature is characterized as the connector's detent.

The GPO product is designed with three available detent levels, and two detents exist within the smaller GPPO and G3PO series. This is accommodated by the incorporation of a ring in the male pin connector (commonly known as the shroud). This 'detent ring' interacts with the mating connector (female contact) to captivate the pair together.

Each of the detent levels, full detent, limited detent (available only in the GPO series), and smooth bore (or zero detent) provide different levels of force required to mate and de-mate the connectors.

	Engage*			Disengage*			Cycles*		
	GPO	GPPO	G3PO	GPO	GPPO	G3PO	GPO	GPPO	G3PO
<b>Full Detent</b>	7.0 lbs	4.5 lbs	2.5 lbs	9.0 lbs	6.5 lbs	4.5 lbs	100 min	100 min	100 min
<b>Limited Detent</b>	5.0 lbs	N/A	N/A	7.0 lbs	N/A	N/A	500 min	N/A	N/A
<b>Smooth Bore</b>	2.0 lbs	2.5 lbs	1.2 lbs	0.5 lbs	1.5 lbs	1.0 lbs	1000 min	500 min	500 min

\* The figures listed for the engage/disengage forces are typical and based upon actual data. Shrouds manufactured from ASTM-F15 sealing alloys will provide increased forces and reduced cycles. Contact the Corning Customer Care Team for more details.

Proper care should be used when designing your system to select the required forces for engaging and disengaging. The level of detent selected will also have an impact on the number of engage/disengage cycles. Note, female cable connectors MUST be used with a full detent male to maintain a fully mated condition during shock and vibration.

## GPO Products

GPO Products



- Center-to-center spacing of 0.170" available for increased package density
- The GPO® blindmate interconnect, Part No. A1A1-0001-01, weighs just 0.17 grams
- Frequency from DC to 40 GHz
- Designed to accommodate both radial and axial misalignment with negligible VSWR change

# GPO Specifications

## General Characteristics

Impedance	50 ohms nominal
Frequency range	DC to 40 GHz
Temperature range	-55°C thru 165°C

## Electrical Characteristics

VSWR	1.15:1 to 26.5 GHz typical; <1.5:1 typical to 40 GHz
Insertion loss	.12 $\sqrt{f}$ GHz
DWV@ Sea Level:	500 Vrms
Insulation resistance	5,000 megohms min.
Contact resistance	
Outer conductor	2 milliohms max.
Inner conductor	6 milliohms max.
RF leakage	-80 dB to 3 GHz, -65 dB to 26.5 GHz

## Mechanical Characteristics

Mate/Demate Cycles	FD - 100min.; LD - 500min.; SB - 1000min.;
Force to engage/disengage	FD - 9.0lbs.typ./7.0lbs.typ.; LD - 7.0lbs.typ./5.0lbs.typ. SB - 2.0lbs.typ./1.5lbs.typ.
Tolerated misalignment	
Radial	+/- 0.010"
Axial	0.010" (flush to 0.010" from the reference plane)

## Environmental Characteristics

Thermal Shock	MIL-STD-202, Method 107, Condition B
Salt Spray	MIL-STD-202, Method 101
Vibration	MIL-STD-202, Method 204
Shock	MIL-STD-202, Method 213, Condition I
Moisture resistance	MIL-STD-202, Method 106, except Step 7B

## Materials (typical)

Bodies	Beryllium Copper per ASTM B196 and or/ASTM B197
Outer contacts	Beryllium Copper per ASTM B196 and or/ASTM B197
Center contacts	Beryllium Copper per ASTM B196 and or/ASTM B197
Insulators	PTFE Fluorocarbon per ASTM D1710 and ASTM D 1457
Springs	17-7 Stainless Steel per ASTM A313-95A

## Finish (typical)

Bodies	Gold plated per MIL-G-45204, Type I, Grade C, Class 1, Over Nickel Plate per QQ-N-290
Contacts	Gold plated per MIL-G-45204, Type I, Grade C, Class 1, Over Nickel Plate per QQ-N-290

\*Note: Corning Gilbert male connectors have a full self-centering mechanism



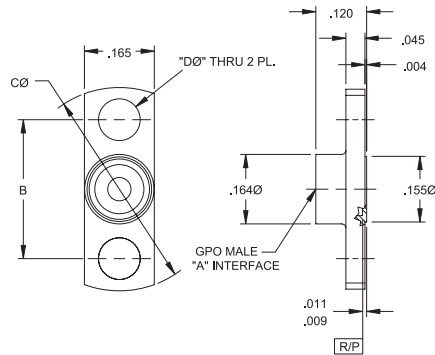
Catalog Number	A	B	C $\phi$	D $\phi$
A001-A23-03	FD	.328	.480	.098
A001-A24-03	LD	.328	.480	.098
A001-A25-03	SB	.328	.480	.098
A001-A23-04	FD	.282	.400	.073
A001-A24-04	LD	.282	.400	.073
A001-A25-04	SB	.282	.400	.073
A001-A23-07	FD	.481	.625	.103
A001-A24-07	LD	.481	.625	.103
A001-A25-07	SB	.481	.625	.103

**Tools Recommended**

- A090-A99-11 (For-03 Series)
- A090-A99-10 (For-04 Series)
- A090-A99-09 (For-07 Series)
- A090-A99-03

**Assembly Procedure**

AP01-009



Male Flange Mount  
Shroud No Center Conductor

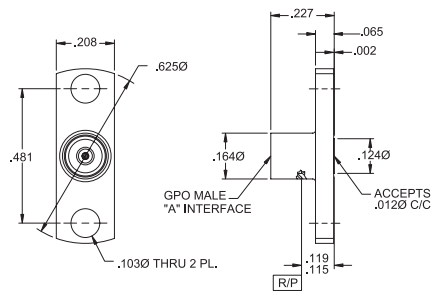
Catalog Number	A
A001-N33-02	FD
A001-N34-02	LD
A001-N35-02	SB

**VSWR (TYP)**

- 1.2:1 to 18 GHz
- 1.35:1 to 26.5 GHz

**Tools Recommended**

A090-A99-09



Male Flange Mount  
Shroud Accepts 0.012 Center Conductor

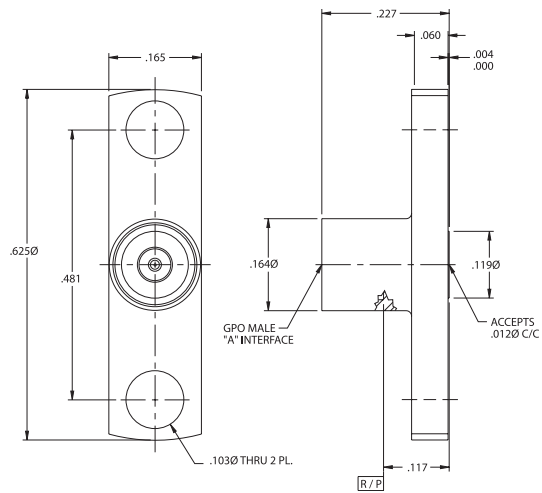
Catalog Number	A
A001-N33-05	FD
A001-N34-05	LD
A001-N35-05	SB

**VSWR (TYP)**

- 1.25:1 to 12 GHz
- 1.35:1 to 26.5 GHz

**Tools Recommended**

A090-A99-09

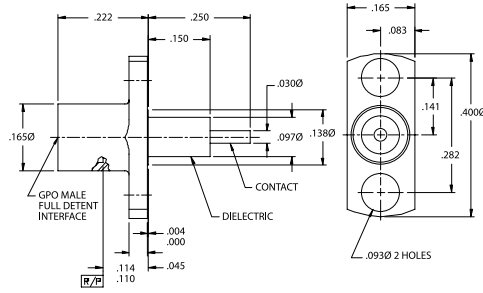


Male 2 Hold Flange Mount

GPO Flange Mounts



Male Full Detent 2 Hole Flange Mount Straight Terminal

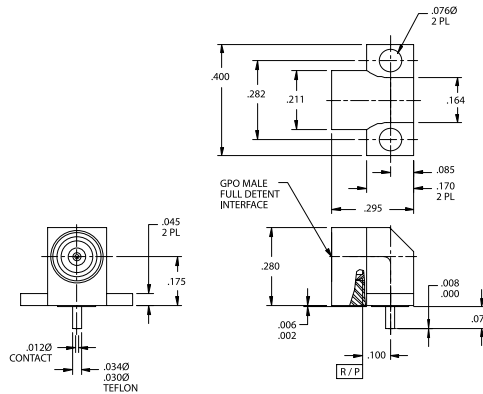


**Catalog Number** A  
0119-441-3 FD

**VSWR (TYP)**  
1.25:1 to 18 GHz  
1.35:1 to 26.5 GHz



Male Full Detent Right Angle Flange Mount

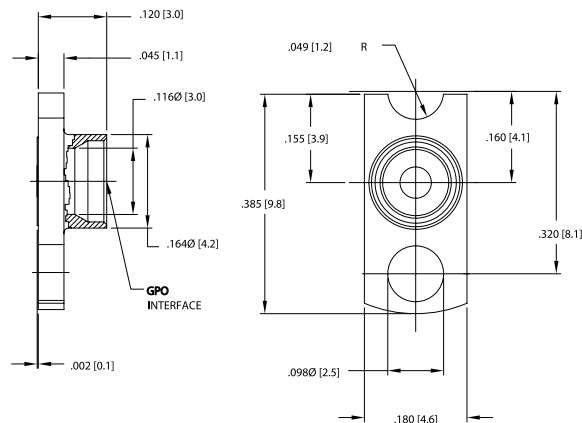


**Catalog Number**  
0119-467-3

**VSWR (TYP)**  
1.25:1 to 18 GHz  
1.35:1 to 26.5 GHz



Male Flange Mount Full Detent Limited Hub 1/2 Hole



**Catalog Number**  
0119-785-3

**Tools Recommended**  
A090-A99-11  
A090-A99-03

**Catalog Number**

0119-857-3

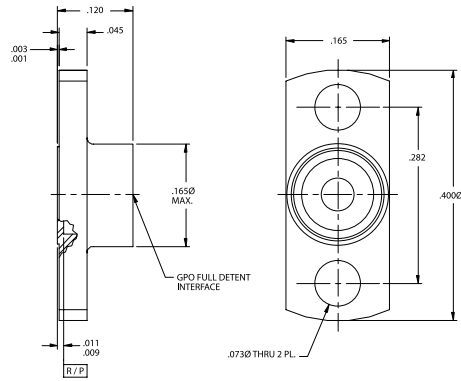
**Tools Recommended**

A090-A99-10

A090-A99-03

**Assembly Procedure**

AP01-009



Male Flange Mount Full Detent Limited Hub

GPO Thread-In Shrouds

**Catalog Number**

A003-A23-01 FD

A003-A24-01 LD

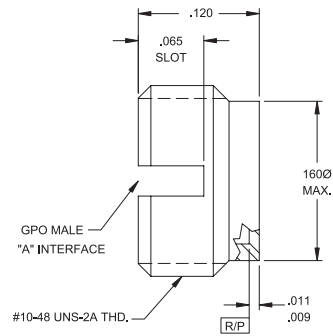
A003-A25-01 SB

**Tools Recommended**

A090-A99-01

**Assembly Procedure**

AP01-024



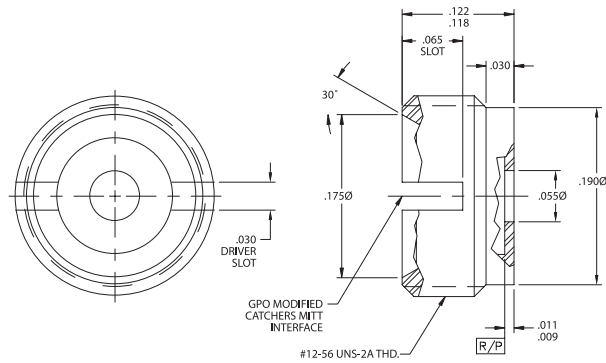
Male Thread-in Shroud No Center Conductor

**Catalog Number**

A003-A27-01

**Tools Recommended**

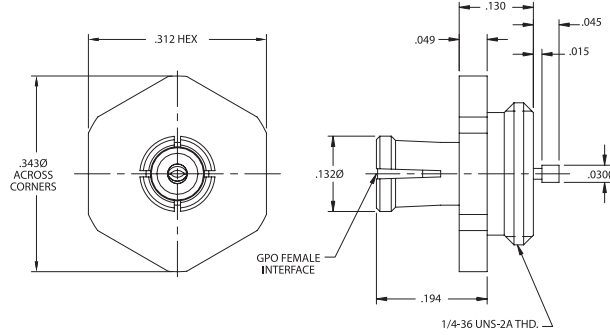
A097-A99-03



Modified Catchers Mitt Thread-in Shroud



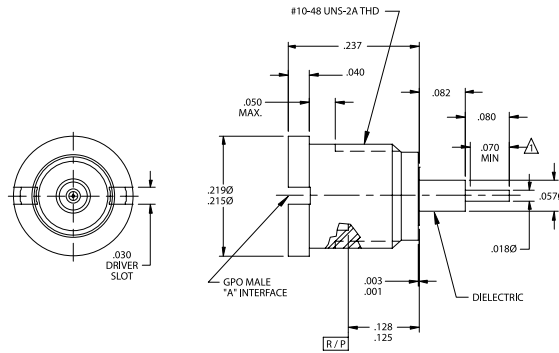
Female Thread-in Waveguide Launch



**Catalog Number**  
A003-L11-01



Male Thread-in Straight Terminal



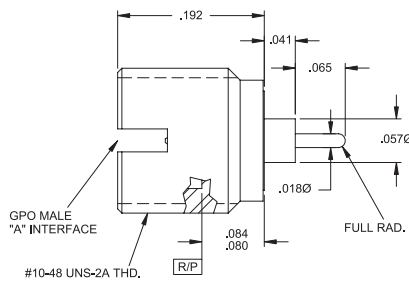
**Catalog Number**    **A**  
A003-L33-01    FD  
A003-L34-01    LD  
A003-L35-01    SB

**VSWR (TYP)**  
1.25:1 to 18 GHz  
1.35:1 to 26.5 GHz

**Tools Recommended**  
A097-A99-01 for FD  
A097-A99-02 for LD  
A097-A99-03 for SB



Male Thread-in Shroud 0.018 Pin Contact



**Catalog Number**    **A**  
A003-L33-02    FD  
A003-L34-02    LD  
A003-L35-02    SB

**VSWR (TYP)**  
1.25:1 to 18 GHz  
1.35:1 to 26.5 GHz

**Tools Recommended**  
A097-A99-01 for FD  
A097-A99-02 for LD  
A097-A99-03 for SB

Catalog Number	A
A003-N33-01	FD
A003-N34-01	LD
A003-N35-01	SB

**VSWR (TYP)**

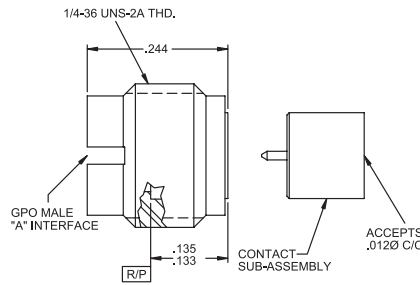
1.25:1 to 18 GHz  
1.35:1 to 26.5 GHz

**Tools Recommended**

A097-A99-01 for FD  
A097-A99-02 for LD  
A097-A99-03 for SB  
A097-A99-07

**Assembly Procedure**

AP01-104



Male Thread-in Shroud 2.92 mm Sparkplug

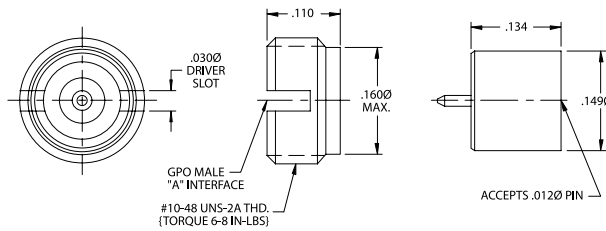
Catalog Number	A
A003-N33-02	FD
A003-N34-02	LD
A003-N35-02	SB

**VSWR (TYP)**

1.25:1 to 18 GHz  
1.35:1 to 26.5 GHz

**Tools Recommended**

A097-A99-01 for FD  
A097-A99-02 for LD  
A097-A99-03 for SB  
A097-A99-07

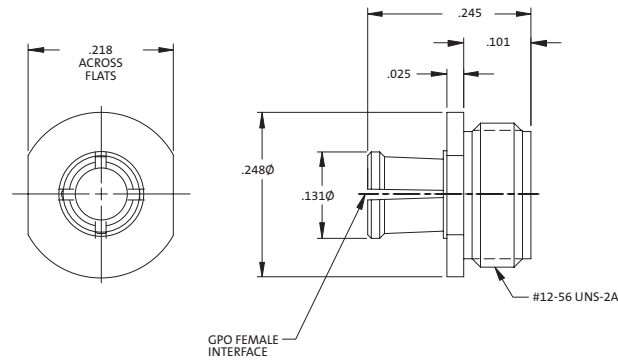


Male Thread-in Shroud Accepts 0.012 Pin

Catalog Number
0119-228-1

**VSWR (TYP)**

1.25:1 to 18 GHz  
1.35:1 to 26.5 GHz

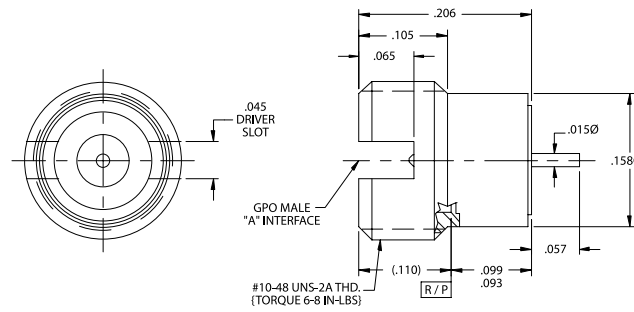


GPO Female Thread-in





Male Thread-in  
Non-hermetic Straight Terminal



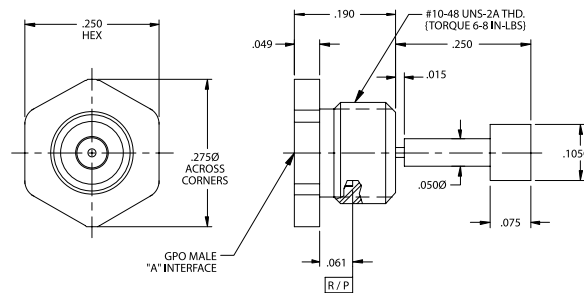
Catalog Number	A
0119-258-3-FD	FD
0119-258-3-LD	LD
0119-258-3-SB	SB

**VSWR (TYP)**  
1.25:1 to 18 GHz  
1.35:1 to 26.5 GHz

**Tools Recommended**  
A090-A99-01 for FD  
A090-A99-02 for LD  
A090-A99-03 for SB



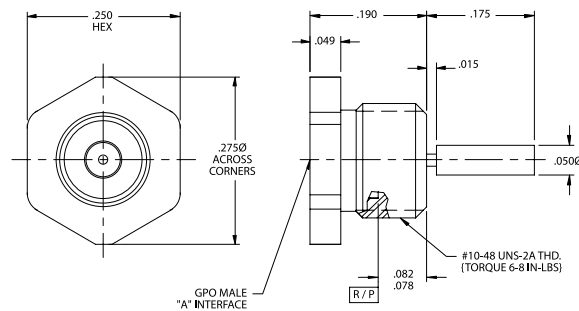
Male Thread-in  
Waveguide Launch



Catalog Number	A
0119-265-3-FD	FD
0119-265-3-LD	LD
0119-265-3-SB	SB



Male Thread-in  
Waveguide Launch



Catalog Number	A
0119-266-3-FD	FD
0119-266-3-LD	LD
0119-266-3-SB	SB

Catalog Number	A	B
0119-424-3-1	.067-.073	.040
0119-424-3-2	.097-.103	.040
0119-424-3-3	.200	.110
0119-424-3-4	.350	.260

**VSWR (TYP)**

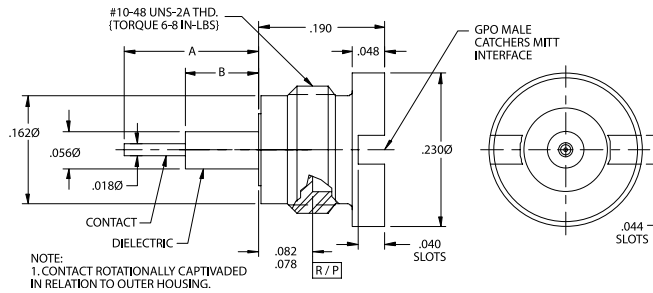
1.35:1 to 18 GHz  
 1.45:1 to 26.5 GHz

**Tools Recommended**

A090-A99-03

**Assembly Procedure**

AP01-057



Male Catchers  
Mitt to Straight Terminal

**Catalog Number**

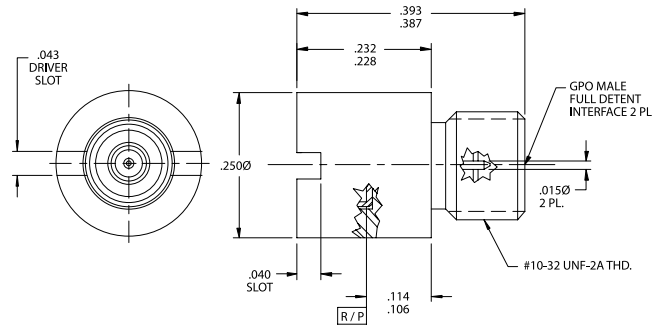
0119-579-3

**VSWR (TYP)**

1.25:1 to 18 GHz  
 1.35:1 to 26.5 GHz

**Tools Recommended**

A090-A99-01



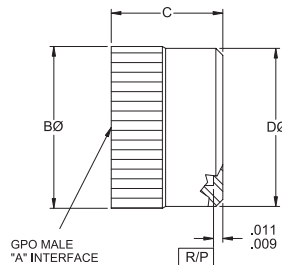
Male to Male Full Detent  
Thread-in

GPO Press-In Shrouds

Catalog Number	A	B $\phi$	C	D $\phi$
A005-A23-01	FD	.174	.120	.170
A005-A24-01	LD	.174	.120	.170
A005-A25-01	SB	.174	.120	.170
A005-A23-02	FD	.154	.080	.143
A005-A24-02	LD	.154	.080	.143
A005-A25-02	SB	.154	.080	.143

**Tools Recommended**

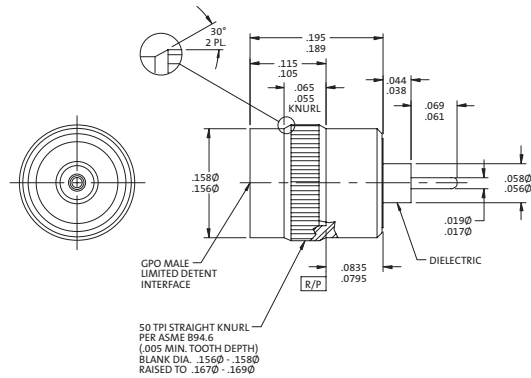
A090-A99-08



Male Press-in Shroud  
No Center Conductor



Male Limited Detent  
Press-in Straight Terminal



**Catalog Number**  
A005-L34-01

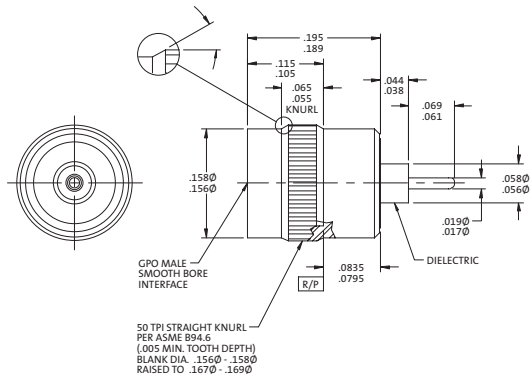
**VSWR (TYP)**  
1.25:1 to 18 GHz  
1.35:1 to 26.5 GHz

**Tools Recommended**  
A090-A99-08

**Assembly Procedure**  
AP01-070



Male Smooth Bore  
Press-in Straight Terminal



**Catalog Number**  
A005-L35-01

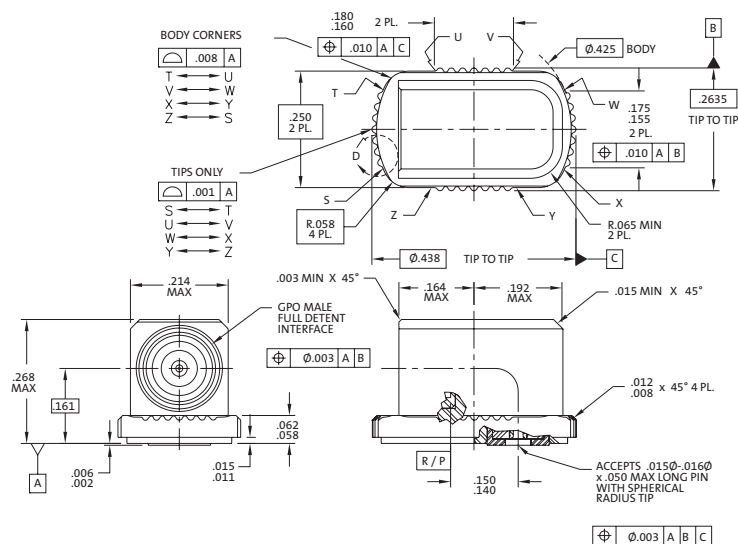
**VSWR (TYP)**  
1.25:1 to 18 GHz  
1.35:1 to 26.5 GHz

**Tools Recommended**  
A090-A99-08

**Assembly Procedure**  
AP01-070



Male Full Detent  
R/A Press-in Accepts 0.015 C/C



**Catalog Number**  
A006-N33-02

**VSWR (TYP)**  
1:3:1 to 18 GHz

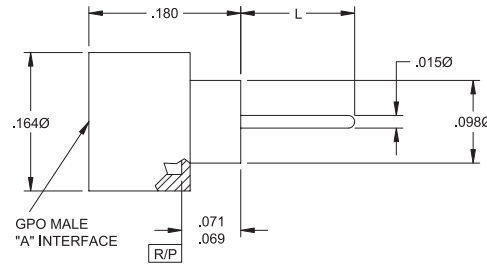
Catalog Number	A	"L" Lengths
A007-L43-01-TAB-X FD		.030/.050/.070/.090
A007-L44-01-TAB-X LD		.030/.050/.070/.090
A007-L45-01-TAB-X SB		.030/.050/.070/.090

TAB = "L" x 10<sup>3</sup> inches

X = Customer defined. Straight (S) or Radius (R) cut.

**VSWR (TYP)**

1.25:1 to 18 GHz  
1.35:1 to 26.5 GHz



Male Hermetic Shroud  
Full Shroud Full Body

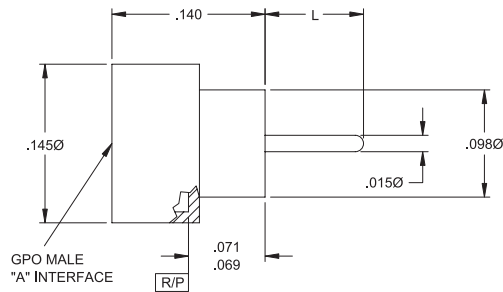
Catalog Number	A	"L" Lengths
A007-L43-02-TAB-X FB		.030/.050/.070/.090
A007-L44-02-TAB-X LD		.030/.050/.070/.090
A007-L45-02-TAB-X SB		.030/.050/.070/.090

TAB = "L" x 10<sup>3</sup> inches

X = Customer defined. Straight (S) or Radius (R) cut.

**VSWR (TYP)**

1.25:1 to 18 GHz  
1.35:1 to 26.5 GHz



Male Hermetic Shroud  
Half Shroud Full Body

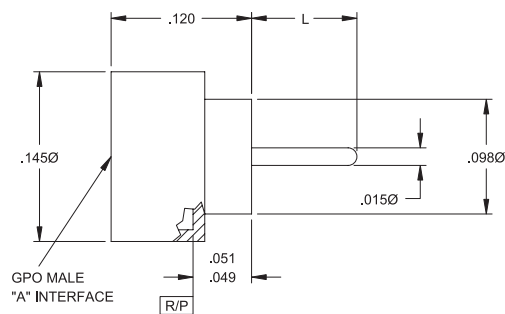
Catalog Number	A	"L" Lengths
A007-L43-03-TAB-X FD		.030/.050/.070/.090
A007-L44-03-TAB-X LD		.030/.050/.070/.090
A007-L45-03-TAB-X SB		.030/.050/.070/.090

TAB = "L" x 10<sup>3</sup> inches

X = Customer defined. Straight (S) or Radius (R) cut.

**VSWR (TYP)**

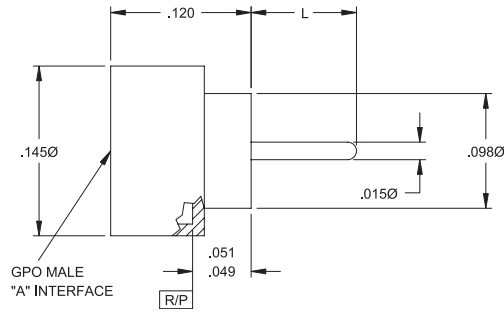
1.25:1 to 18 GHz  
1.35:1 to 26.5 GHz



Male Hermetic Shroud  
Full Shroud Short Body



Male Hermetic Shroud  
Half Shroud Short Body



Catalog Number	A	"L" Lengths
A007-L43-04-TAB-X	FD	.030/.050/.070/.090
A007-L44-04-TAB-X	LD	.030/.050/.070/.090
A007-L45-04-TAB-X	SB	.030/.050/.070/.090

TAB = "L" x 10<sup>3</sup> inches

X = Customer defined. Straight (S) or Radius (R) cut.

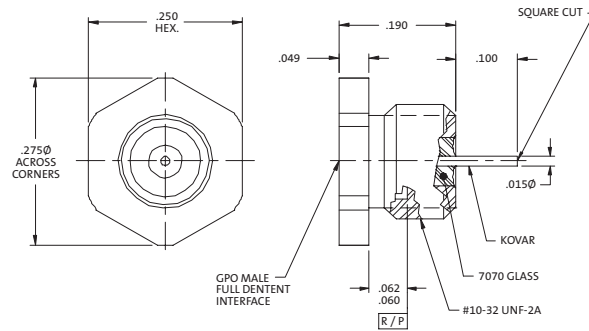
**VSWR (TYP)**

1.25:1 to 18 GHz

1.35:1 to 26.5 GHz



Male Full Detent  
Thread-in Shroud Straight Terminal



**Catalog Number**

A007-L43-14

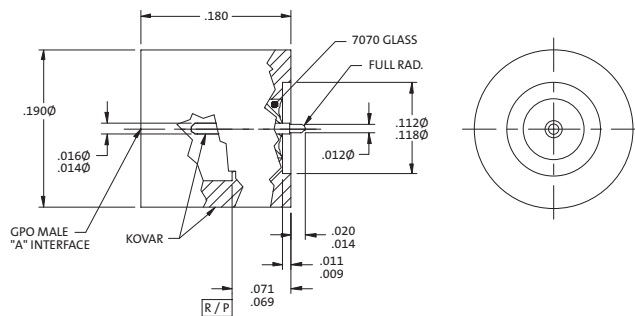
**VSWR (TYP)**

1.25:1 to 18 GHz

1.35:1 to 26.5 GHz



Male Solder-in Hermetic Shroud



Catalog Number	A
0119-248-1-FD	FD
0119-248-1-LD	LD
0119-248-1-SB	SB
0119-248-1-CM	CM

**VSWR (TYP)**

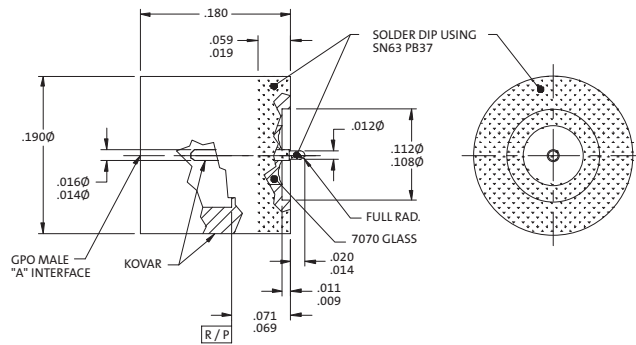
1.25:1 to 18 GHz

1.35:1 to 26.5 GHz



Catalog Number	A
0119-248-1-FD-T	FD
0119-248-1-LD-T	LD
0119-248-1-SB-T	SB
0119-248-1-CM-T	CM

**VSWR (TYP)**  
 1.25:1 to 18 GHz  
 1.35:1 to 26.5 GHz

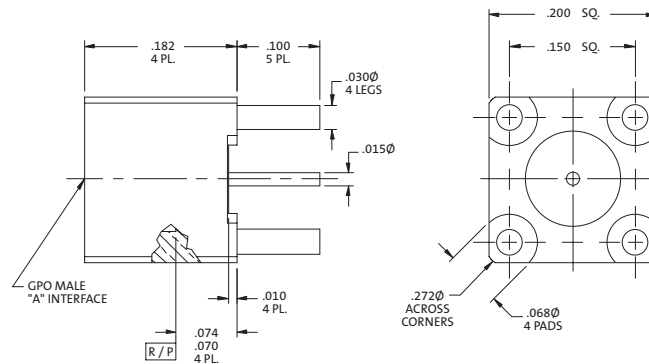


Male Solder-in Hermetic Shroud With Tin Solder Dipping

GPO PCB Mounts

Catalog Number	A
A008-L13-03	FD
A008-L14-03	LD
A008-L15-03	SB

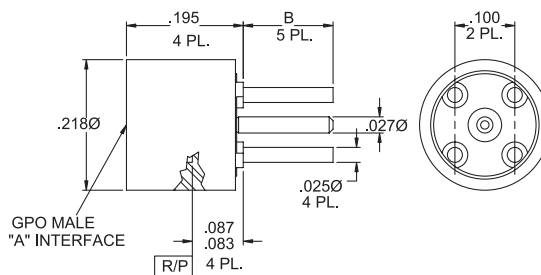
**VSWR (TYP)**  
 1.30:1 to 20 GHz



Male Straight to PCB

Catalog Number	A	B
A008-L33-01	FD	.100
A008-L34-01	LD	.100
A008-L35-01	SB	.100
A008-L33-02	FD	.140
A008-L34-02	LD	.140
A008-L35-02	SB	.140

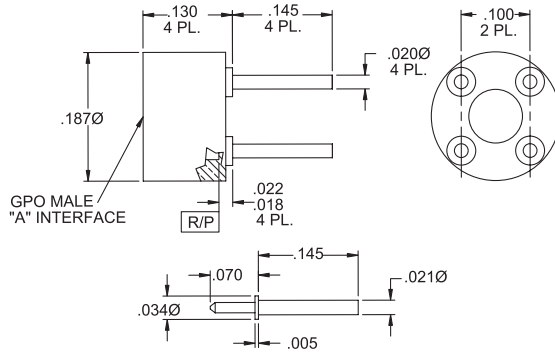
**VSWR (TYP)**  
 1.30:1 to 20 GHz



Male PCB 4 Leg Thru Mount Cap Center Conductor



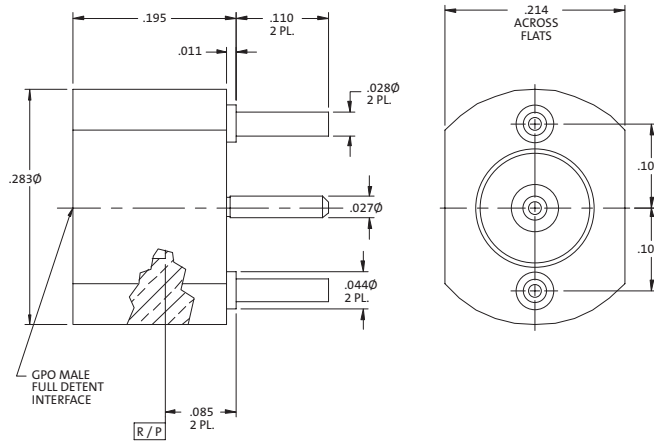
Male PCB 4 Leg  
Thru Mount Sep C/C



<b>Catalog Number</b>	<b>A</b>
A008-L33-05	FD
A008-L34-05	LD
A008-L35-05	SB
<b>VSWR (TYP)</b>	
1.30:1 to 20 GHz	



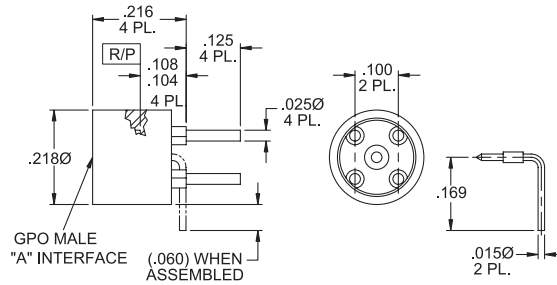
Male Full Detent  
PCB 3 Pin Thru Hole



<b>Catalog Number</b>	
A008-L33-06	
<b>VSWR (TYP)</b>	
1.30:1 to 20 GHz	



Male PCB 4 Leg  
Thru Mount R/A Center Conductor



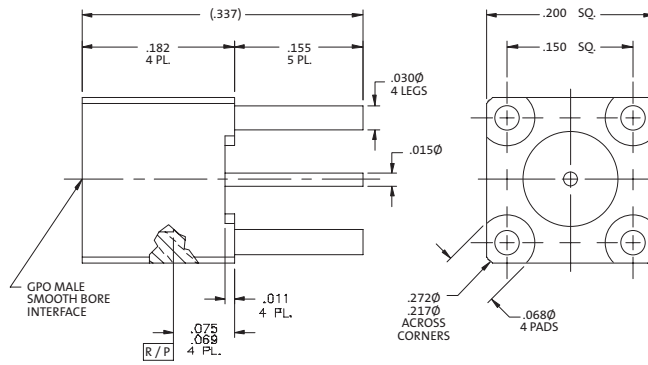
<b>Catalog Number</b>	<b>A</b>
A008-P33-01	FD
A008-P34-01	LD
A008-P35-01	SB
<b>VSWR (TYP)</b>	
1.30:1 to 20 GHz	

**Catalog Number**

0119-411-1

**VSWR (TYP)**

1.30:1 to 20 GHz

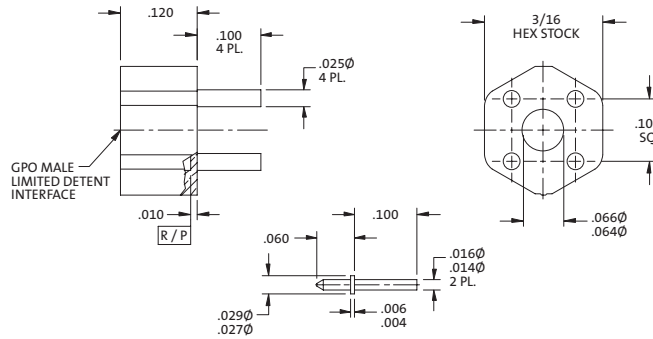


**Catalog Number**

0119-711-1

**VSWR (TYP)**

1.30:1 to 20 GHz



**Catalog Number A**

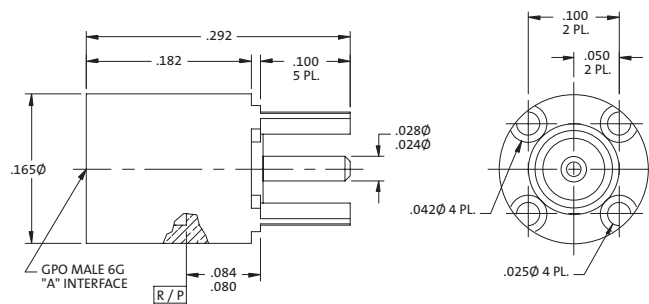
1619-001-1-FD FD

1619-001-1-LD LD

1619-001-1-SB SB

**VSWR (TYP)**

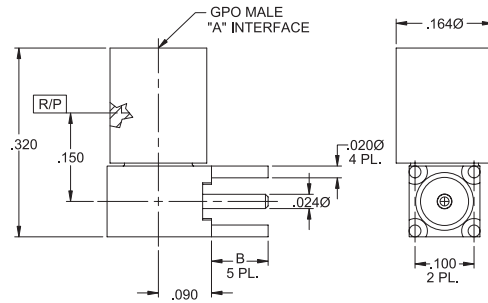
1.30:1 to 20 GHz



## GPO Right Angle PCB Mounts



Male R/A PCB 4 Leg  
Thru Mount Cap C/C

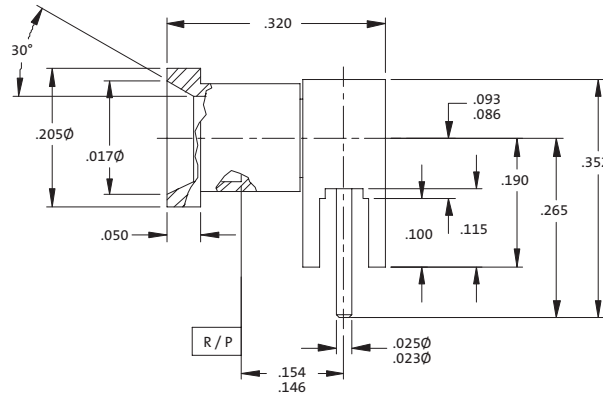


Catalog Number	A	B
A009-P33-01	FD	.096
A009-P34-01	LD	.096
A009-P35-01	SB	.096
A009-P33-03	FD	.140
A009-P34-03	LD	.140
A009-P35-03	SB	.140

VSWR (TYP)  
1.35:1 to 20 GHz



Male Smooth Bore  
Catchers Mitt R/A to PCB

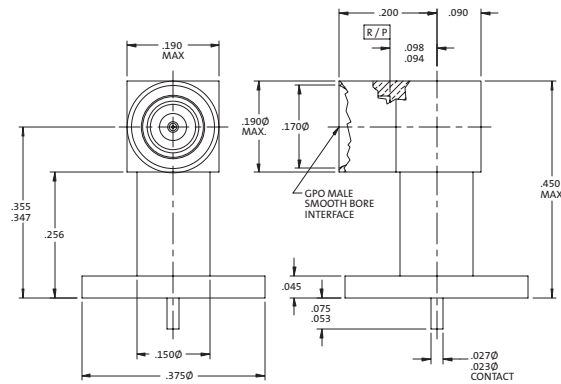


Catalog Number  
0119-397-3-100

VSWR (TYP)  
1.35:1 to 20 GHz



Male Smooth Bore  
Right Angle to PCB



Catalog Number  
0119-588-1

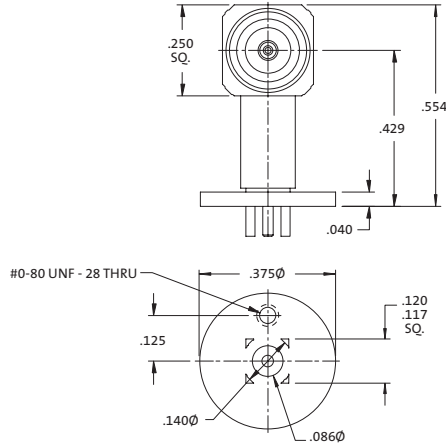
VSWR (TYP)  
1.35:1 to 20 GHz

**Catalog Number**

0119-714-3

**VSWR (TYP)**

1.35:1 to 20 GHz



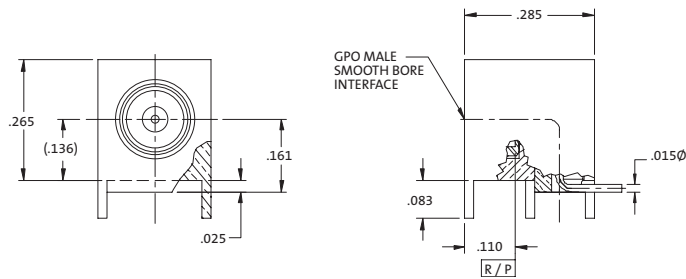
Male Catchers Mitt  
Right Angle to PCB

**Catalog Number**

0119-720-1

**VSWR (TYP)**

1.35:1 to 20 GHz



Male Smooth Bore  
Right Angle to PCB with R/A Launch

GPO Edge Mounts

**Catalog Number**

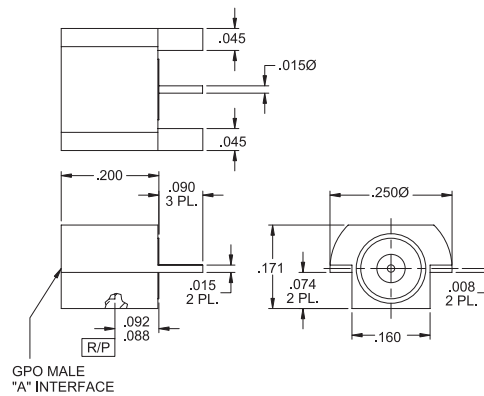
A010-L13-02 FD

A010-L14-02 LD

A010-L15-02 SB

**VSWR (TYP)**

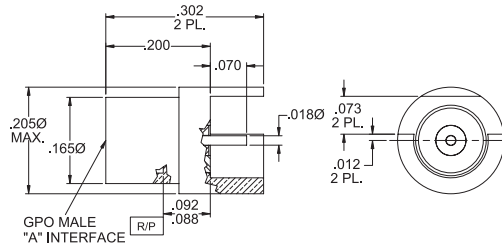
1.25:1 to 26.5 GHz



Male PCB Edge Mount



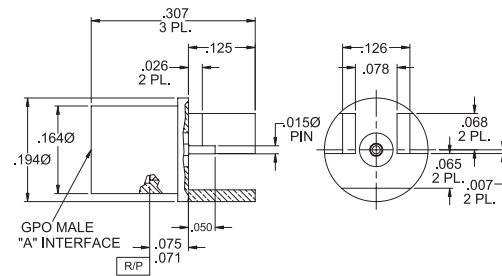
## GPO Edge Mounts



Catalog Number	A
A010-L33-01	FD
A010-L34-01	LD
A010-L35-01	SB

**VSWR (TYP)**  
1.25:1 to 26.5 GHz

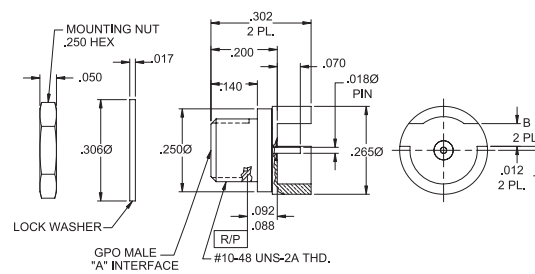
Male PCB Edge Mount



Catalog Number	A
A010-L33-02	FD
A010-L34-02	LD
A010-L35-02	SB

**VSWR (TYP)**  
1.25:1 to 26.5 GHz

Male PCB Edge Mount

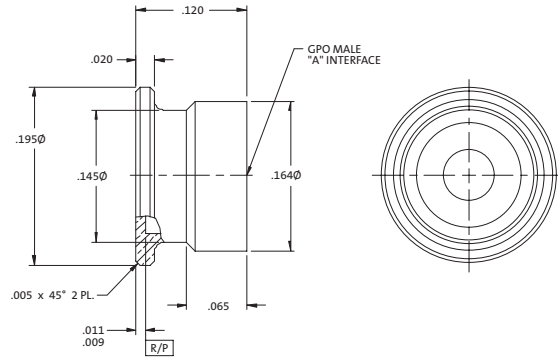


Catalog Number	A	B
A010-L33-03	FD	.099
A010-L34-03	LD	.099
A010-L35-03	SB	.099
A010-L33-04	FD	.069
A010-L34-04	LD	.069
A010-L35-04	SB	.069

**VSWR (TYP)**  
1.25:1 to 26.5 GHz

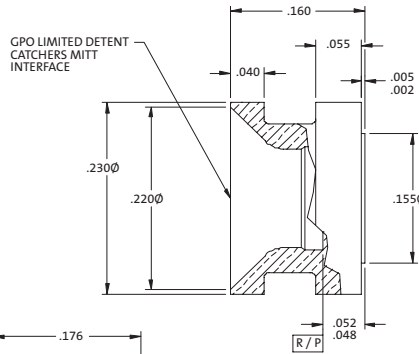
Male PCB Edge Mount with Chassis Mount

Catalog Number	A
A012-A93-01	FD
A012-A94-01	LD
A012-A95-01	SB



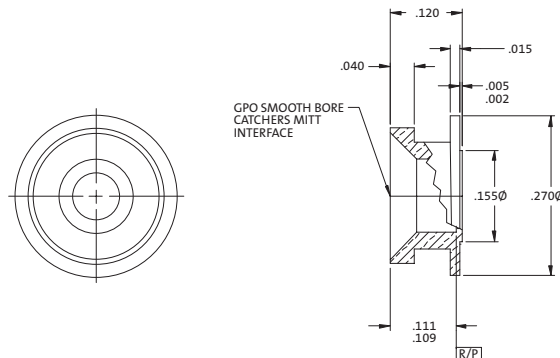
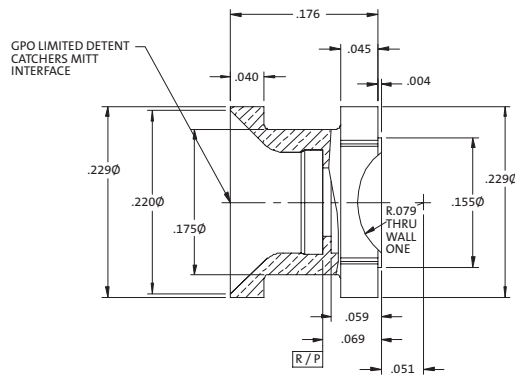
Male Solder-on Shroud

Catalog Number	A012-A97-01
VSWR (TYP)	1.25:1 to 18 GHz 1.35:1 to 26.5 GHz



Male Limited Detent Catchers Mitt Solder-on Shroud

Catalog Number	A012-A97-02
VSWR (TYP)	1.25:1 to 18 GHz 1.35:1 to 26.5 GHz

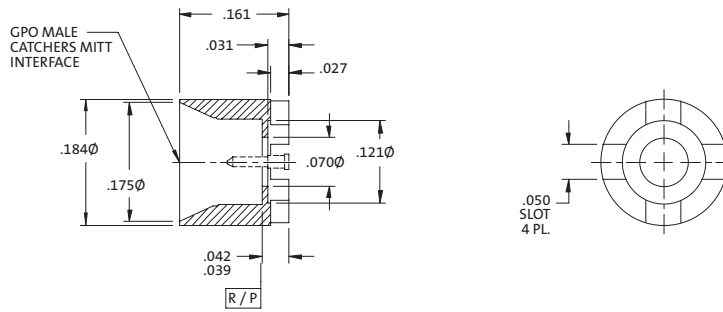


Shroud Solder Mount Smooth Bore Catchers Mitt with Contact and Dielectric

Catalog Number	A012-L76-03
VSWR (TYP)	1.25:1 to 18 GHz 1.35:1 to 26.5 GHz



Shroud Solder Mount Smooth Bore Catchers Mitt with Contact

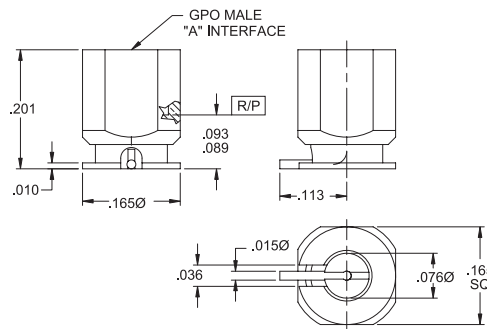


**Catalog Number**  
A012-L96-01

**VSWR (TYP)**  
1.25:1 to 18 GHz  
1.35:1 to 26.5 GHz



Male PCB Surface Mount

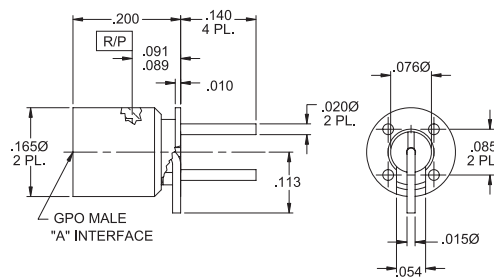


**Catalog Number**    **A**  
A012-P93-01    FD  
A012-P94-01    LD  
A012-P95-01    SB

**VSWR (TYP)**  
1.25:1 to 18 GHz  
1.35:1 to 26.5 GHz



Male PCB 4 Leg Thru Mount R/A C/C



**Catalog Number**    **A**  
A012-P93-04    FD  
A012-P94-04    LD  
A012-P95-04    SB

**VSWR (TYP)**  
1.25:1 to 18 GHz  
1.35:1 to 26.5 GHz

**Catalog Number**

A014-B11-01

**VSWR (TYP)**

1.25:1 to 26.5 GHz

**Tools Recommended**

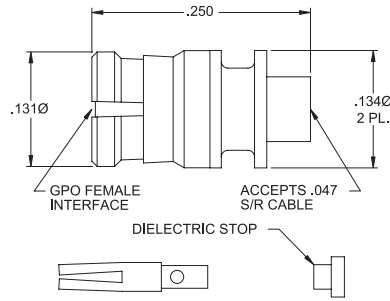
A096-A99-02

L096-A99-02

A096-A99-06

**Assembly Procedure**

AP01-002



Female Straight to 0.047 S/R Cable

**Catalog Number**

A001-B83-01 FD .328 .480 .093

A001-B84-01 LD .328 .480 .093

A001-B85-01 SB .328 .480 .093

A001-B83-02 FD .282 .400 .073

A001-B84-02 LD .282 .400 .073

A001-B85-02 SB .282 .400 .073

**VSWR (TYP)**

1.25:1 to 26.5 GHz

**Tools Recommended**

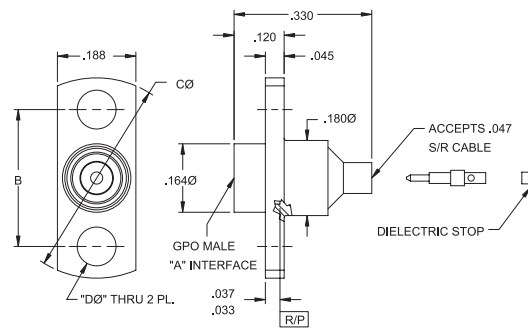
A096-A99-04

L096-A99-02

9001-942-3

**Assembly Procedure**

AP01-014



Male Flange Mount to 0.047 S/R Cable

**Catalog Number**

0119-881-1

**VSWR (TYP)**

1.20:1 to 26.5 GHz

**Tools Recommended**

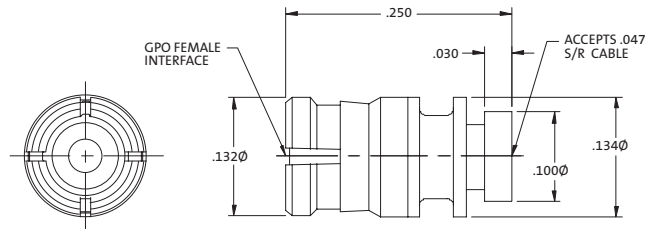
A096-A99-02

L096-A99-02

A096-A99-06

**Assembly Procedure**

AP01-002

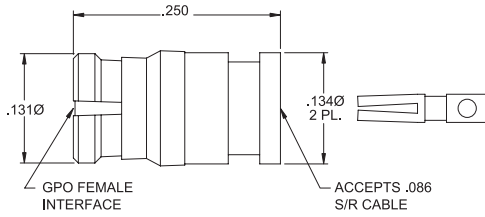


Female Straight to 0.047 S/R Cable Solder Attach Center Conductor



Female Straight  
to 0.086 S/R Cable

\* For a flexible alternative, order A015-K11-06  
to allow for heat shrink sleeve



**Catalog Number**  
A014-D11-01\*

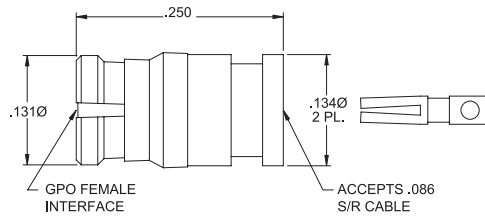
**VSWR (TYP)**  
1.25:1 to 26.5 GHz

**Tools Recommended**  
A096-A99-06  
L096-A99-01

**Assembly Procedure**  
AP01-114



Male Straight  
to 0.086 S/R Microporous Cable



**Catalog Number**  
A014-D11-02

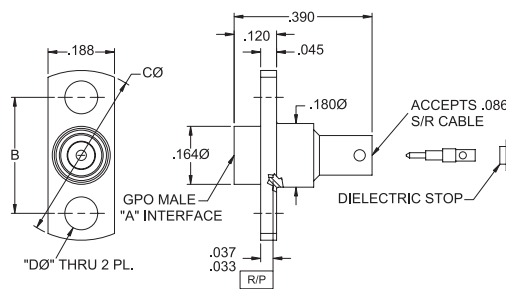
**VSWR (TYP)**  
1.25:1 to 26.5 GHz

**Tools Recommended**  
9001-932-3  
A096-A99-06  
L096-A99-01

**Assembly Procedure**  
AP01-071



Male Flange Mount to  
0.086 S/R Cable



Catalog Number	A	B	CØ	DØ
A001-D83-01	FD	.328	.480	.093
A001-D84-01	LD	.328	.480	.093
A001-D85-01	SB	.328	.480	.093
A001-D83-02	FD	.282	.400	.073
A001-D84-02	LD	.282	.400	.073
A001-D85-02	SB	.282	.400	.073

**VSWR (TYP)**  
1.35:1 to 26.5 GHz

**Tools Recommended**  
L096-A99-01  
A096-A99-04  
9001-942-3

**Assembly Procedure**  
AP01-015

**Catalog Number**

0119-399-1

**VSWR (TYP)**

1.25:1 to 26.5 GHz

**Tools Recommended**

A096-A99-06

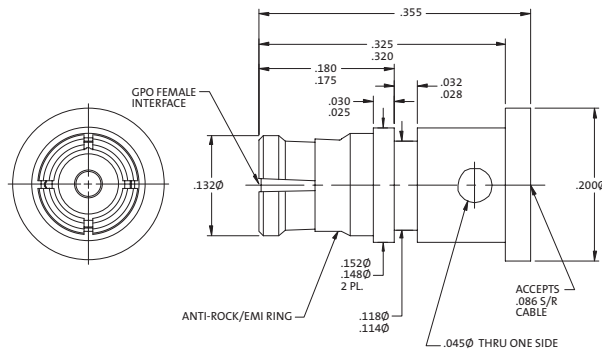
L096-A99-01

9001-932-3

A096-A99-02

**Assembly Procedure**

AP01-131



Female Straight to 0.086 S/R Cable  
Solder Attach Center Conductor

**Catalog Number**

A014-F71-01

**VSWR (TYP)**

1.10:1 to 4 GHz

**Tools Recommended**

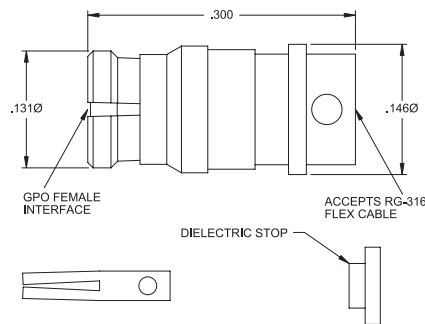
A096-A99-06

L096-A99-01

A096-A99-02

**Assembly Procedure**

IS-7804-1



Female Straight  
to RG-316 Cable

**Catalog Number**

A014-H71-01

**VSWR (TYP)**

1.15:1 to 4 GHz

**Tools Recommended**

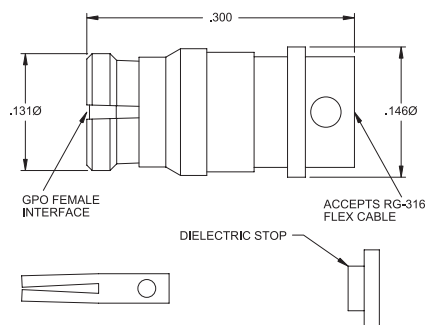
A096-A99-02

L096-A99-01

A096-A99-06

**Assembly Procedure**

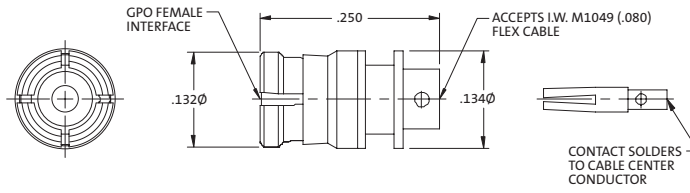
AP01-039



Female Straight  
to RG-178/196 Cable



Female Straight  
to 0.080 Flex Cable



**Catalog Number**

A014-K11-01

**Tools Recommended**

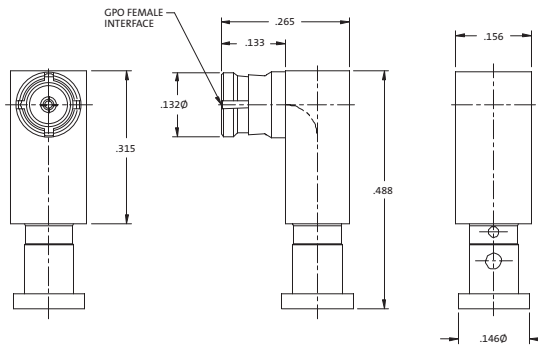
- A096-A99-02
- A096-A99-06
- L096-A99-01

**Assembly Procedure**

AP01-113



Female to  
UFF-070D Flex Cable



**Catalog Number**

0119-202-1

**Tools Recommended**

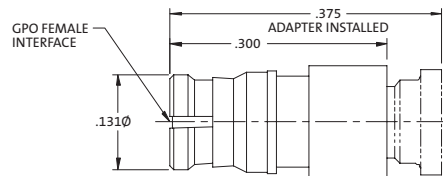
- A096-A99-02
- L096-A99-02
- A096-A99-08

**Assembly Procedure**

AP01-095



Female Straight  
to UFF-070D Flex Cable



**Catalog Number**

0119-203-1

**Tools Recommended**

- A096-A99-02
- L096-A99-02
- A096-A99-06

**Assembly Procedure**

AP01-093

**Catalog Number**

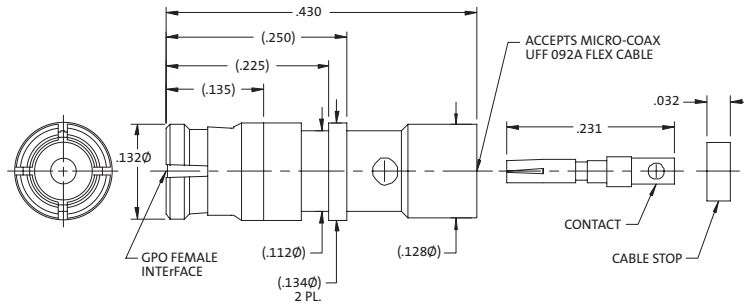
0119-594-1

**Tools Recommended**

A096-A99-02  
L096-A99-01  
A096-A99-06

**Assembly Procedure**

AP01-060



Female Straight to UFF-092A Flex Cable

**Catalog Number**

A015-B11-01

**VSWR (TYP)**

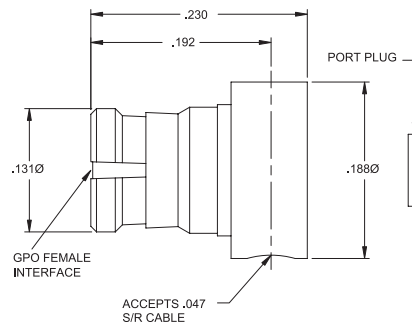
1.20:1 to 18 GHz  
1.30:1 to 26.5 GHz

**Tools Recommended**

A096-A99-07  
L096-A99-02  
A096-A99-01

**Assembly Procedure**

AP01-097



Female R/A to 0.047 S/R Cable

**Catalog Number**

A015-B11-02

**VSWR (TYP)**

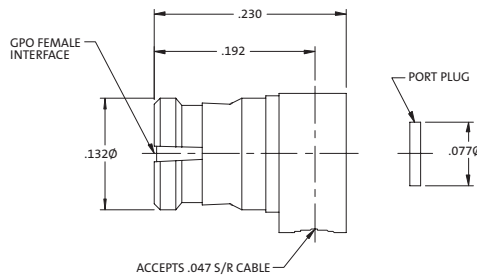
1.25:1 to 26.5 GHz

**Tools Recommended**

A096-A99-01  
A096-A99-07  
L096-A99-02

**Assembly Procedure**

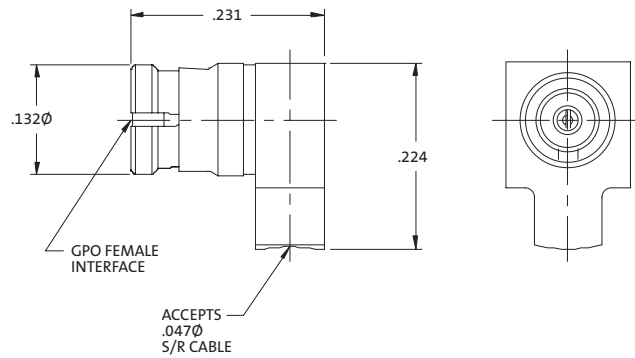
AP01-097



Female R/A to 0.047 S/R Cable



Female R/A to 0.047 S/R Cable  
(High Performance)



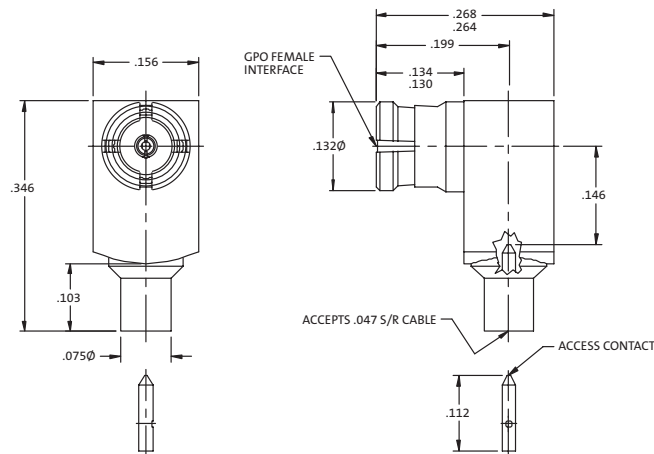
**Catalog Number**  
A015-B71-01

**VSWR (TYP)**  
1.25:1 to 26.5 GHz

**Tools Recommended**  
A096-A99-01  
A096-A99-07  
L096-A99-02

**Assembly Procedure**  
AP01-019

Female Swept R/A  
to 0.047 S/R Cable



**Catalog Number**  
A015-B71-03

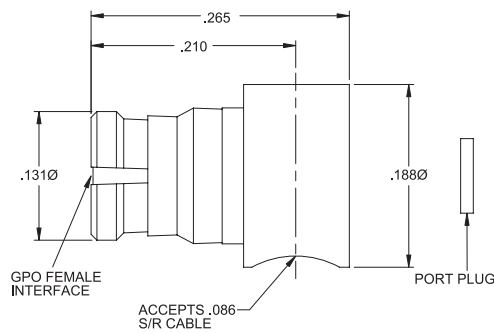
**VSWR (TYP)**  
1.25:1 to 18 GHz  
1.45:1 to 26.5 GHz

**Tools Recommended**  
A096-A99-01  
L096-A99-02  
A096-A99-01

**Assembly Procedure**  
AP01-073



Female R/A  
to 0.086 S/R Cable



**Catalog Number**  
A015-D11-01

**VSWR (TYP)**  
1.20:1 to 18 GHz  
1.35:1 to 26.5 GHz

**Tools Recommended**  
A096-A99-01  
L096-A99-01  
A096-A99-07

**Assembly Procedure**  
AP01-115

**Catalog Number**

A015-D11-03

**VSWR (TYP)**

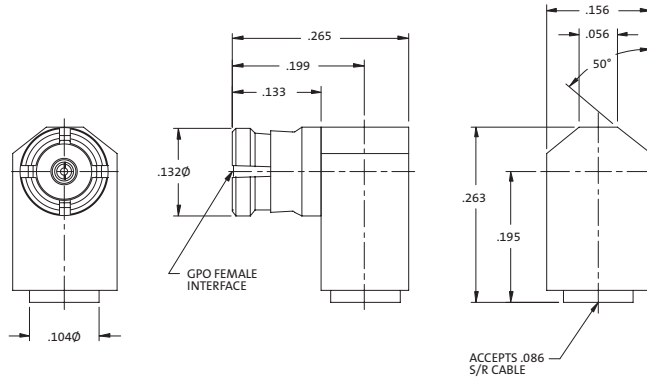
1.20:1 to 18 GHz  
1.35:1 to 40 GHz

**Tools Recommended**

A096-A99-02  
L096-A99-01  
A096-A99-01

**Assembly Procedure**

AP01-072



Female High Performance Swept R/A to 0.086 S/R Cable

**Catalog Number**

0119-300-1

**VSWR (TYP)**

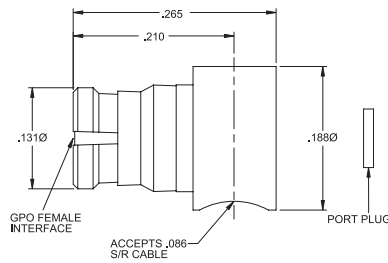
1.35:1 to 18 GHz  
1.45:1 to 26.5 GHz

**Tools Recommended**

A096-A99-02  
L096-A99-01  
A096-A99-01

**Assembly Procedure**

AP01-062



Female R/A to 0.086 S/R Cable

**Catalog Number A**

0119-727-3-FD FD

0119-727-3-LD LD

0119-727-3-SB SB

**VSWR (TYP)**

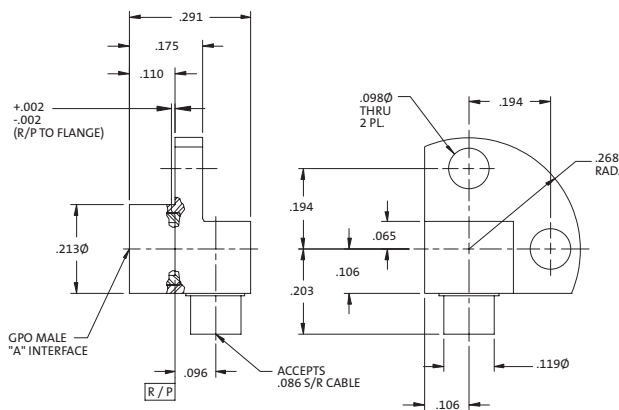
1.25:1 to 26.5 GHz

**Tools Recommended**

A096-A99-04

**Assembly Procedure**

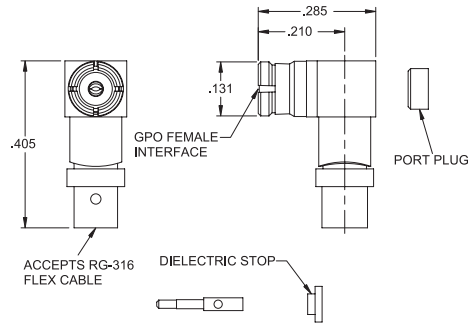
AP01-038



Male R/A to 0.086 S/R Cable



Female R/A to RG-316 Cable



**Catalog Number**

A015-F71-01

**VSWR (TYP)**

1.15:1 to 3 GHz

**Tools Recommended**

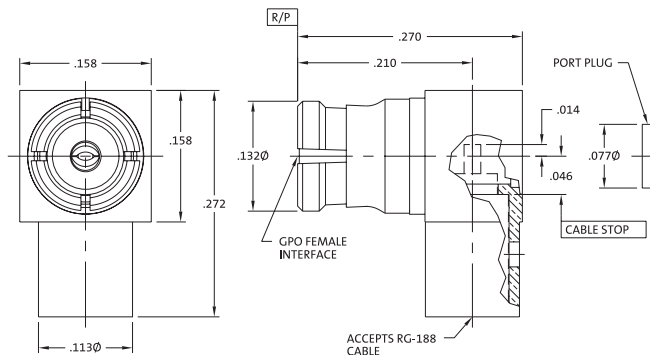
- A096-A99-02
- A096-A99-01
- A096-A99-08
- L096-A99-01

**Assembly Procedure**

AP01-125



Female R/A to RG-178/196 Cable



**Catalog Number**

A015-H71-01

**VSWR (TYP)**

1.30:1 to 3 GHz

**Tools Recommended**

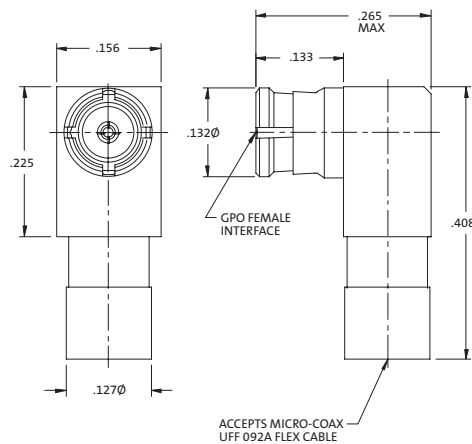
- A096-A99-02
- A096-A99-01
- A096-A99-08
- L096-A99-01

**Assembly Procedure**

AP01-040



Female R/A to UFF-092A Flex Cable



**Catalog Number**

0119-303-1

**VSWR (TYP)**

1.30:1 to 18 GHz  
1.35:1 to 26.5 GHz

**Tools Recommended**

- A096-A99-06
- A096-A99-01
- L096-A99-01

**Assembly Procedure**

AP01-061

Catalog Number	A
A016-B83-01	FD
A016-B84-01	LD
A016-B86-01	CM

**VSWR (TYP)**

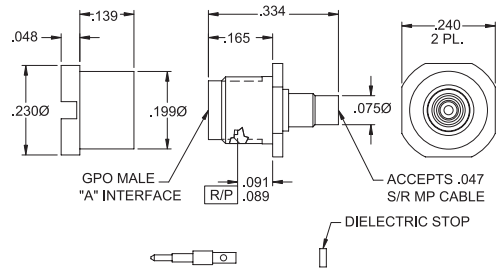
1.20:1 to 26.5 GHz

**Tools Recommended**

- A096-A99-04
- 9001-942-3
- L096-A99-02

**Assembly Procedure**

AP01-063



Male Bulkhead Mount to 0.047 S/R Microporous Cable

**Catalog Number**

0119-546-3

**VSWR (TYP)**

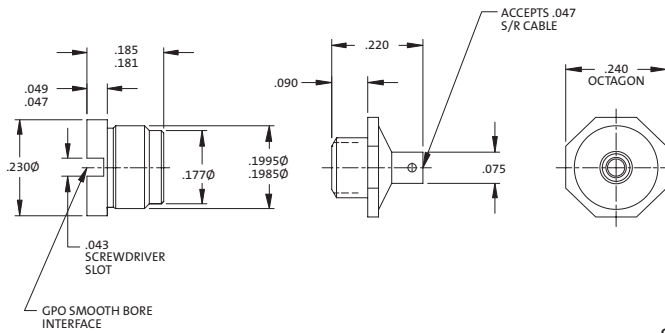
1.20:1 to 26.5 GHz

**Tools Recommended**

- A096-A99-04
- 9001-942-3
- L096-A99-02

**Assembly Procedure**

AP01-023



Male Bulkhead Mount Smooth Bore Thread-on to 0.047 S/R Cable

**Catalog Number**

Catalog Number	A
A016-D53-01	FD
A016-D54-01	LD
A016-D55-01	SB

**VSWR (TYP)**

1.15:1 to 18 GHz

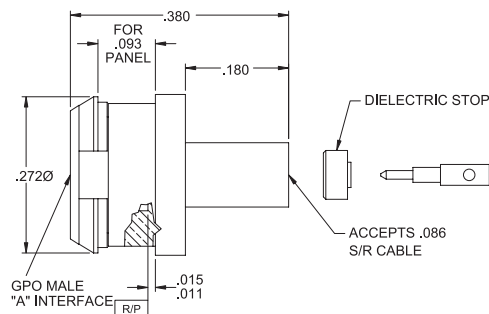
1.30:1 to 26.5 GHz

**Tools Recommended**

- 9001-942-3
- L096-A99-04
- L096-A99-01

**Assembly Procedure**

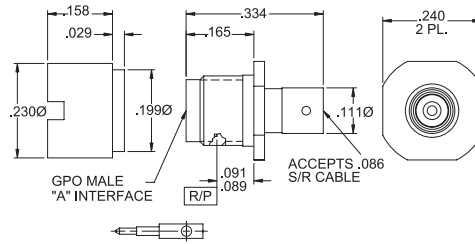
AP01-087



Male Snap-in to 0.086 S/R Cable



Male Bulkhead Mount to 0.086 S/R Cable



Catalog Number	A
A016-D73-03	FD
A016-D74-03	LD
A016-D76-03	CM

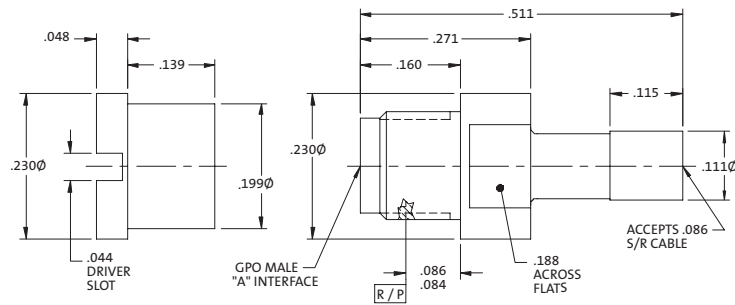
**VSWR (TYP)**  
 1.15:1 to 18 GHz  
 1.25:1 to 26.5 GHz

**Tools Recommended**  
 A096-A99-02  
 9001-932-3  
 A096-A99-03  
 L096-A99-01

**Assembly Procedure**  
 AP01-123



Male Bulkhead Mount to 0.086 S/R Cable



Catalog Number	A
A016-D83-01	FD
A016-D84-01	LD
A016-D86-01	CM

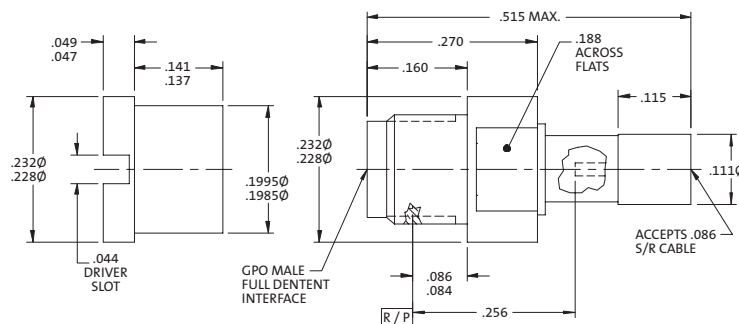
**VSWR (TYP)**  
 1.25:1 to 26.5 GHz

**Tools Recommended**  
 A096-A99-02  
 L096-A99-01  
 A096-A99-03

**Assembly Procedure**  
 AP01-050



Male Full Detent Bulkhead Mount to 0.086 S/R Cable



Catalog Number	A
A016-D83-02	

**VSWR (TYP)**  
 1.20:1 to 18 GHz  
 1.30:1 to 26.5 GHz

**Tools Recommended**  
 A096-A99-02  
 L096-A99-01  
 A096-A99-03

**Assembly Procedure**  
 AP01-050

**Catalog Number**

A016-D87-01

**VSWR (TYP)**

1.25:1 to 18 GHz

1.35:1 to 26.5 GHz

**Tools Recommended**

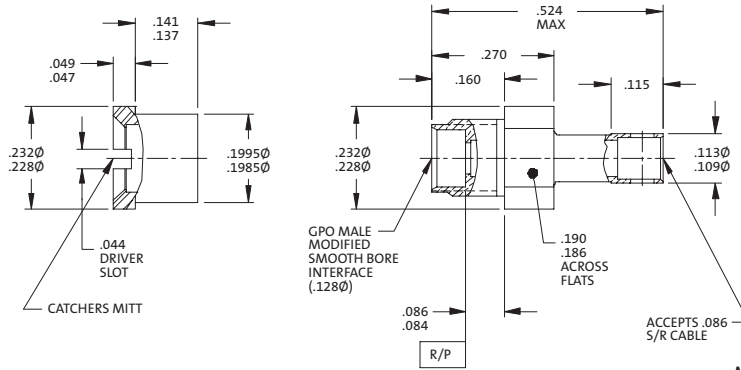
A096-A99-02

L096-A99-01

A096-A99-03

**Assembly Procedure**

AP01-050



Male Modified Smooth Bore Catchers Mitt Bulkhead Mount to 0.086 S/R Cable

**Catalog Number**

O119-447-1

**VSWR (TYP)**

1.20:1 to 10 GHz

1.30:1 to 26.5 GHz

**Tools Recommended**

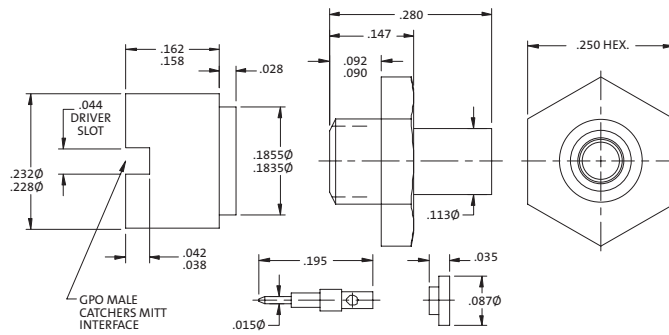
A096-A99-04

L096-A99-01

A096-A99-03

**Assembly Procedure**

AP01-056



Male Catchers Mitt Thread-on Bulkhead Mount to 0.086 S/R Cable

**Catalog Number**

A016-G86-01

**VSWR (TYP)**

1.15:1 to 3 GHz

**Tools Recommended**

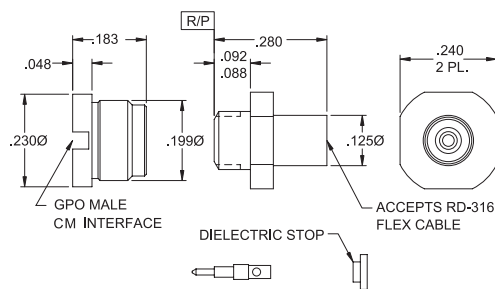
A096-A99-04

L096-A99-01

A096-A99-03

**Assembly Procedure**

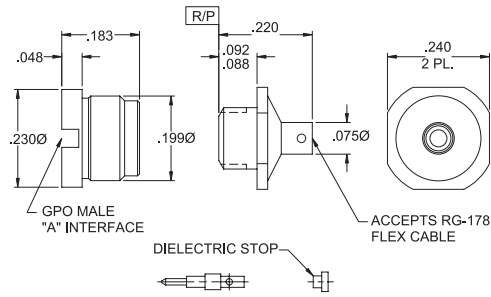
AP01-029



Male Bulkhead Mount to RD-316 Cable



Male Bulkhead Mount to RG-178/196 Cable



Catalog Number	A
A016-H83-01	FD
A016-H84-01	LD
A016-H85-01	SB

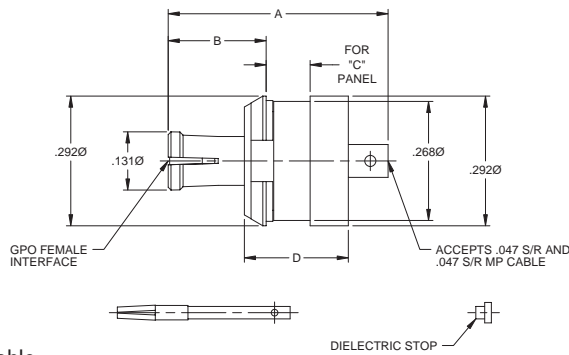
**VSWR (TYP)**  
1.20:1 to 3 GHz

**Tools Recommended**  
A096-A99-04  
L096-A99-01  
A096-A99-03  
A018-B71-01

**Assembly Procedure**  
IS-7095-5



Female Snap-in Float Mount to 0.047 and 0.047 S/R Microporous Cable



Catalog Number	A	B	C	D
A018-B71-01	.495	.221	.093	.234
A018-B71-02	.530	.254	.150	.230

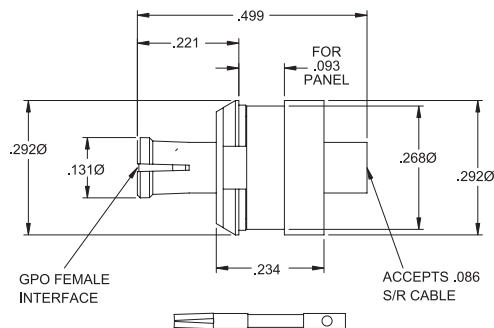
**VSWR (TYP)**  
1.15:1 to 18 GHz  
1.25:1 to 26.5 GHz

**Tools Recommended**  
A096-A99-02  
L096-A99-02  
A096-A99-06

**Assembly Procedure**  
IS-7582-1



Female Snap-in Float Mount to 0.086 S/R Cable



Catalog Number
A018-D11-01

**VSWR (TYP)**  
1.15:1 to 15 GHz  
1.30:1 to 26.5 GHz

**Tools Recommended**  
A096-A99-02  
L096-A99-01  
A096-A99-06

**Assembly Procedure**  
IS-7504-1

**Catalog Number**

A018-F71-01

**VSWR (TYP)**

1.15:1 to 3 GHz

**Tools Recommended**

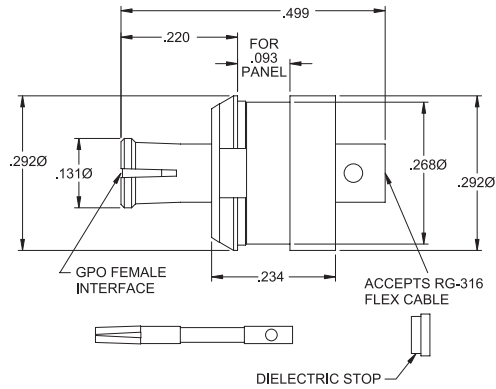
A096-A99-02

L096-A99-01

A096-A99-06

**Assembly Procedure**

AP01-049



Female Snap-in Float Mount to RG-316 Cable

**Catalog Number**

0119-392-3

**VSWR (TYP)**

1.15:1 to 4 GHz

**Tools Recommended**

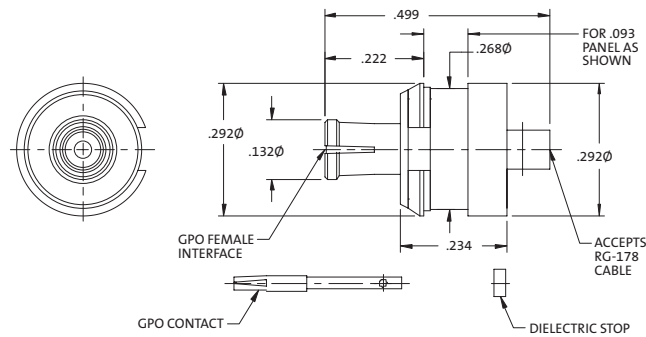
A096-A99-02

L096-A99-01

A096-A99-06

**Assembly Procedure**

AP01-078



Female Straight Float Mount Snap-in to RG-178 Cable

**Catalog Number**

0119-533-3

**VSWR (TYP)**

1.15:1 to 12 GHz

1.20:1 to 26 GHz

**Tools Recommended**

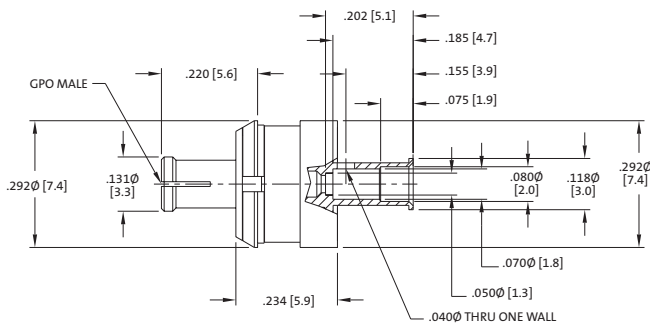
A096-A99-02

L096-A99-02

A096-A99-06

**Assembly Procedure**

IS-7856-1



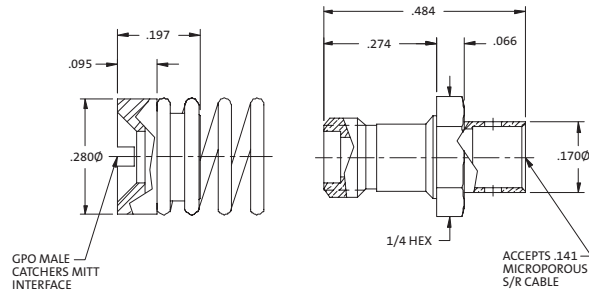
Female Straight Float Mount Snap-in to 421-042 Flex Cable



## GPO Cable Connectors



Male Catchers Mitt Bulkhead Float  
Mount to 0.141 Microporous S/R Cable



### Catalog Number

0119-590-3

### Tools Recommended

A096-A99-02

L096-A99-01

A096-A99-09

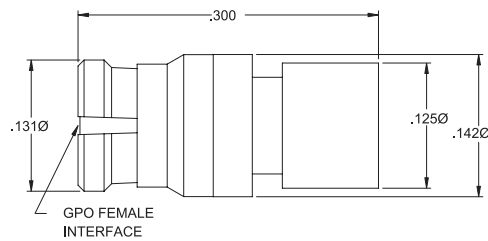
### Assembly Procedure

AP01-045

## GPO Loads



Female 50 Ohm Load



### Catalog Number

A055-A11-01

A055-A11-02

### Grade

TEST GRADE

FIELD GRADE

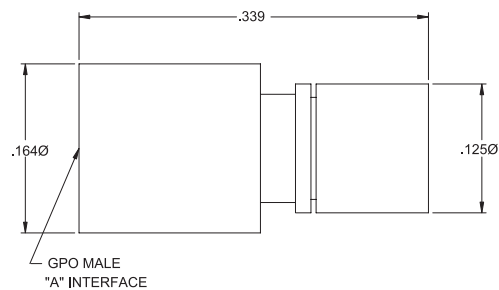
### VSWR (TYP)

TEST GRADE 1.20:1 to 26.5 GHz

FIELD GRADE 1.25:1 to 26.5 GHz



Male 50 Ohm Load



### Catalog Number

A055-A14-01

A055-A15-01

A055-A14-02

A055-A15-02

### A

LD

SB

LD

SB

### Grade

TEST GRADE

TEST GRADE

FIELD GRADE

FIELD GRADE

### VSWR (TYP)

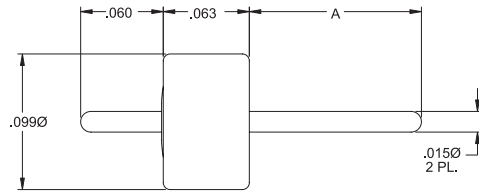
TEST GRADE 1.20:1 to 18 GHz, 1.40:1 to 26.5 GHz

FIELD GRADE 1.30:1 to 18 GHz, 1.50:1 to 26.5 GHz

Catalog Number	A
Y007-L42-03	.050
Y007-L42-02	.125
Y007-L42-04	.200

**VSWR (TYP)**

1.15:1 to 26.5 GHz



50 Ohm Hermetic Seal

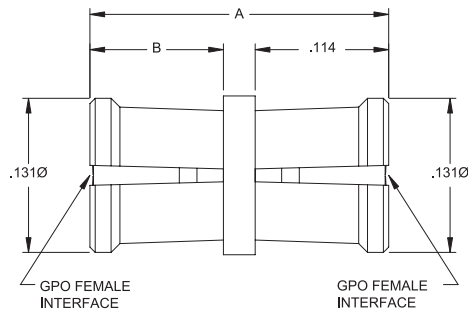
GPO Blindmate Interconnects

Catalog Number	A	B
A1A1-0001-01	.254	.114
A1A1-0001-03	.395	.254

\* Note: Bullets of almost any length can be created to suit your application. Please contact customer service for further information.

**VSWR (TYP)**

1.10:1 to 8 GHz  
1.35:1 to 26.5 GHz



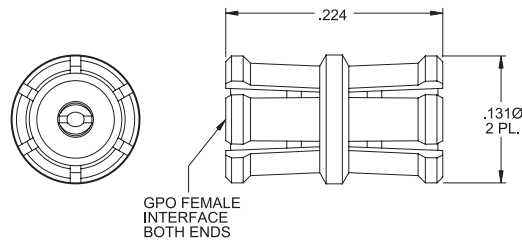
Female Blindmate Interconnect

**Catalog Number**

A1A1-0001-02

**VSWR (TYP)**

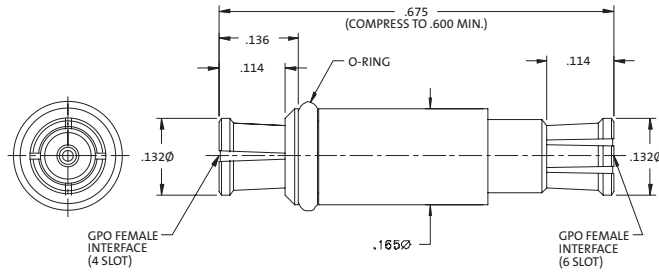
1.10:1 to 12 GHz  
1.40:1 to 26.5 GHz



Female Blindmate Interconnect



Female Blindmate Interconnect  
Self-Adjusting

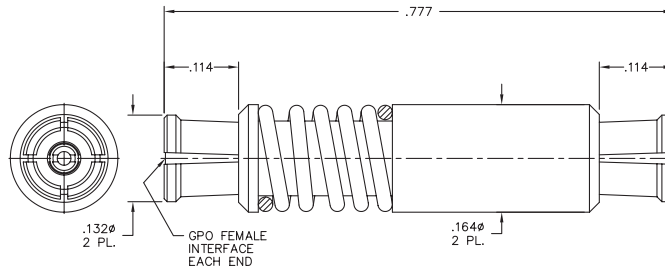


**Catalog Number**  
A1A1-0001-09

**VSWR (TYP)**  
1.20:1 to 8 GHz  
1.40:1 to 26.5 GHz



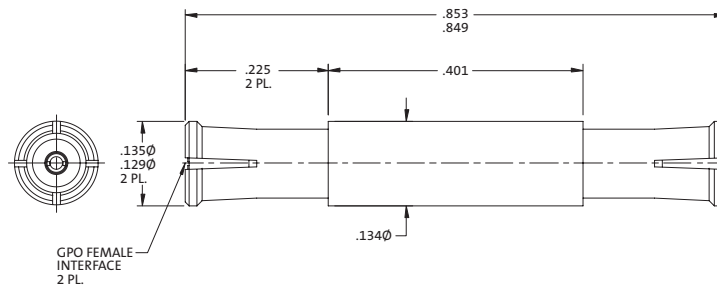
Spring Loaded Bullet



**Catalog Number**  
A1A1-0001-34



Female Blindmate Interconnect



**Catalog Number**  
A1A1-0001-15

**VSWR (TYP)**  
1.50:1 to 26.5 GHz

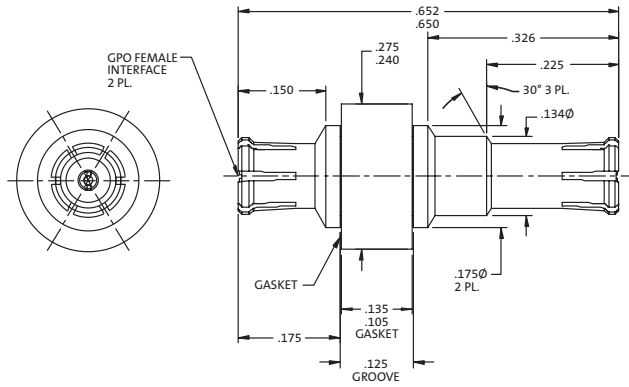
**Catalog Number**

A1A1-0001-24

**VSWR (TYP)**

1.25:1 to 18 GHz

1.35:1 to 26.5 GHz



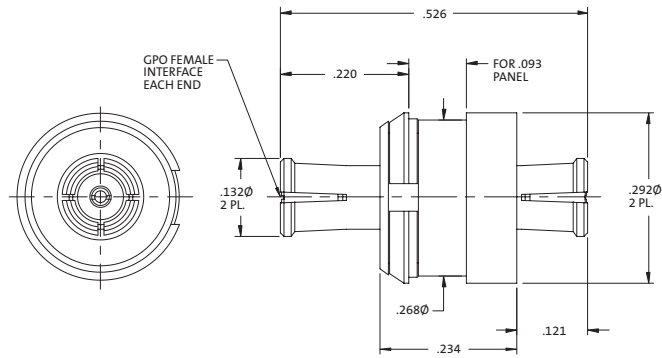
Female Blindmate Interconnect

**Catalog Number**

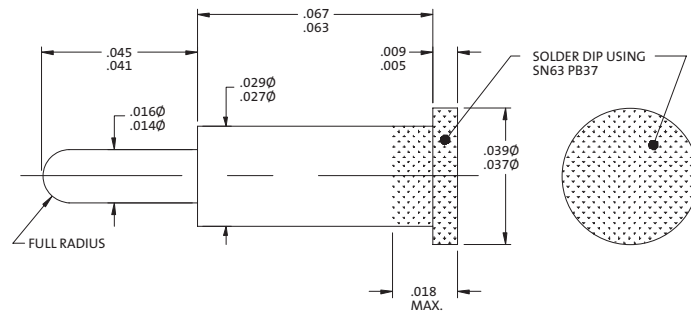
A1A1-0547-01

**VSWR (TYP)**

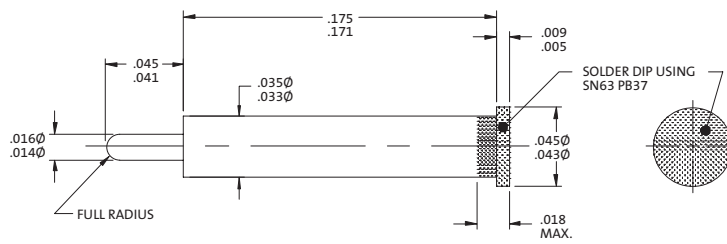
1.35:1 to 26.5 GHz



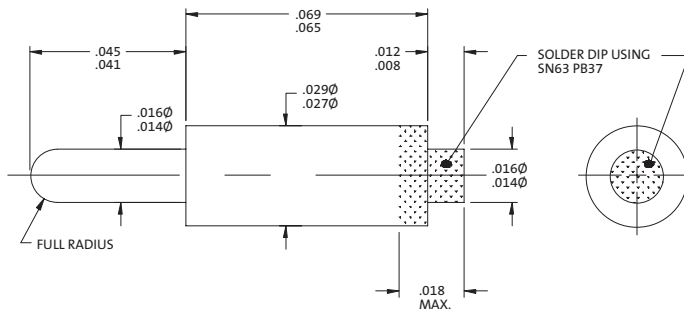
Female Snap-In Float Mount Adapter



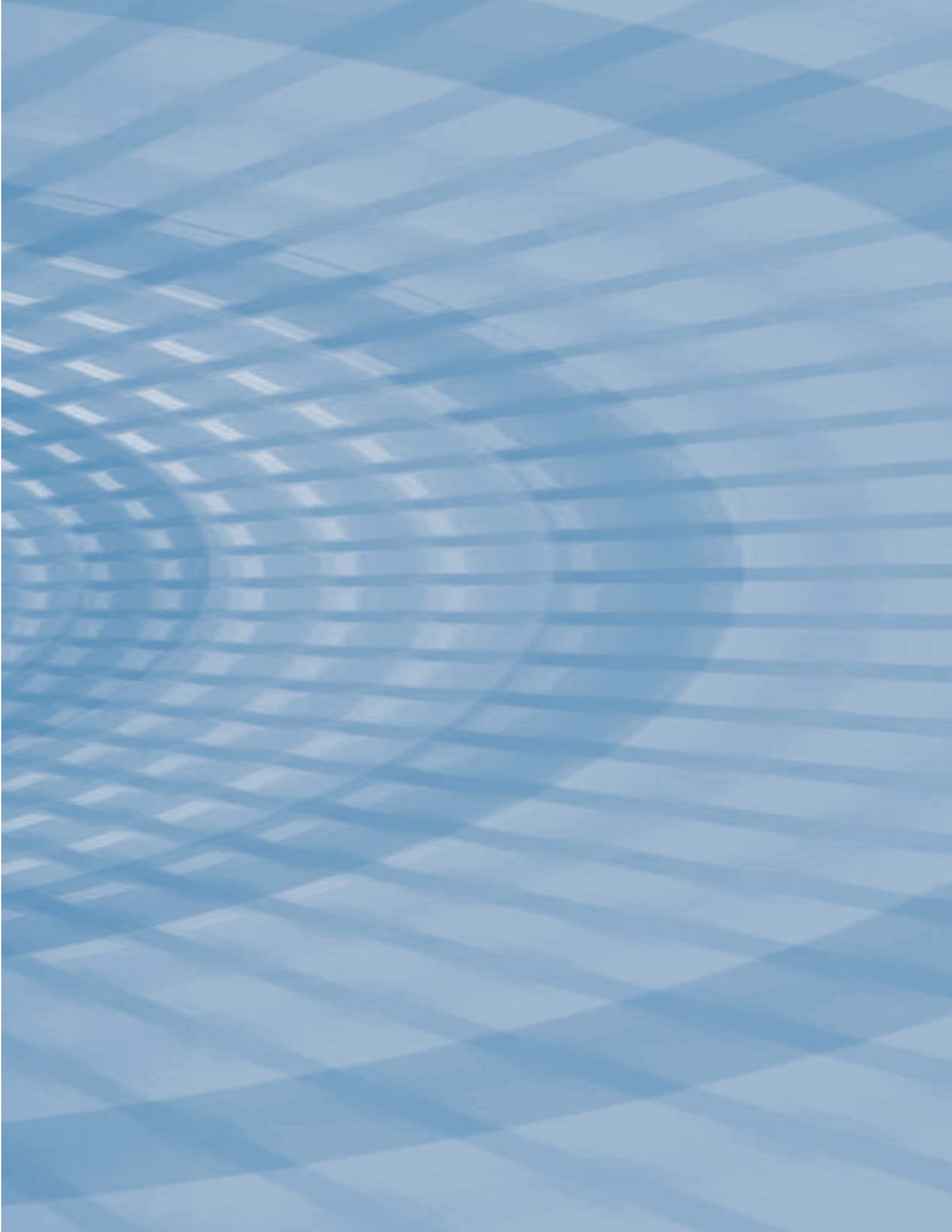
Catalog Number  
Y071-L92-02



Catalog Number  
Y071-L92-03



Catalog Number  
Y071-L92-04



**Corning Gilbert Inc.**  
Microwave Products

5310 West Camelback Road  
Glendale, Arizona 85301 USA

phone: 800 651 8869 (U.S. and Canada)  
(01) 623 845 5613 (International)  
fax: (01) 623 934 5160

website: [www.corning.com/corninggilbert](http://www.corning.com/corninggilbert)  
e-mail: [pushon-info@corning.com](mailto:pushon-info@corning.com)

© Corning Gilbert Inc. G-1500-102 11/06