



SMP Male Smooth Bore CM Connector Solder Attachment  
Surface Mount PCB, with 2 Ground Posts

RF Connectors Technical Data Sheet

PE44944

**Configuration**

- Smooth Bore CM SMP Male Connector
- 50 Ohms
- Straight Body Geometry
- Surface Mount Interface Type
- Solder Attachment

**Features**

- Gold Plated Beryllium Copper Contact
- Contact plating according to MIL-G-45204
- Blind Mate Connector

**Applications**

- General Purpose Test
- PCB Applications

**Description**

Pasternack's PE44944 SMP male smooth bore CM connector with solder attachment for surface mount PCB is part of our full line of RF components available for same-day shipping. The Pasternack blind mate connector is ideal for applications where direct visual or tactile access to the connection point is not possible, for example, when two circuit boards need to be mated.

Our SMP male connector PE44944 datasheet specifications and drawing with dimensions are shown below in this PDF. Pasternack's broad catalog of RF, microwave and millimeter wave connectors allows designers to configure and customize their signal connections however they like. Whether the need is to provide an I/O for a board design, or simply create a custom cable assembly configuration, Pasternack has the right connector for the job. Pasternack can also expertly build your custom cable assemblies for you and ship same-day.

**Mechanical Specifications**

**Size**

Length	0.24 in [6.1 mm]
Width/Dia.	0.22 in [5.59 mm]
Weight	0.002 lbs [0.91 g]

**Material Specifications**

Description	Material	Plating
Contact	Beryllium Copper	Gold MIL-G-45204
Insulation	PAI	
Body	Beryllium Copper	Gold MIL-G-45204

Click the following link (or enter part number in "SEARCH" on website) to obtain additional part information including price, inventory and certifications: [SMP Male Smooth Bore CM Connector Solder Attachment Surface Mount PCB, with 2 Ground Posts PE44944](#)



## SMP Male Smooth Bore CM Connector Solder Attachment Surface Mount PCB, with 2 Ground Posts

### RF Connectors Technical Data Sheet

PE44944

**Compliance Certifications** (see [product page](#) for current document)

#### Plotted and Other Data

Notes:

SMP Male Smooth Bore CM Connector Solder Attachment Surface Mount PCB, with 2 Ground Posts from Pasternack Enterprises has same day shipment for domestic and International orders. Our RF, microwave and millimeter wave products maintain a 99% availability and are part of the broadest selection in the industry.

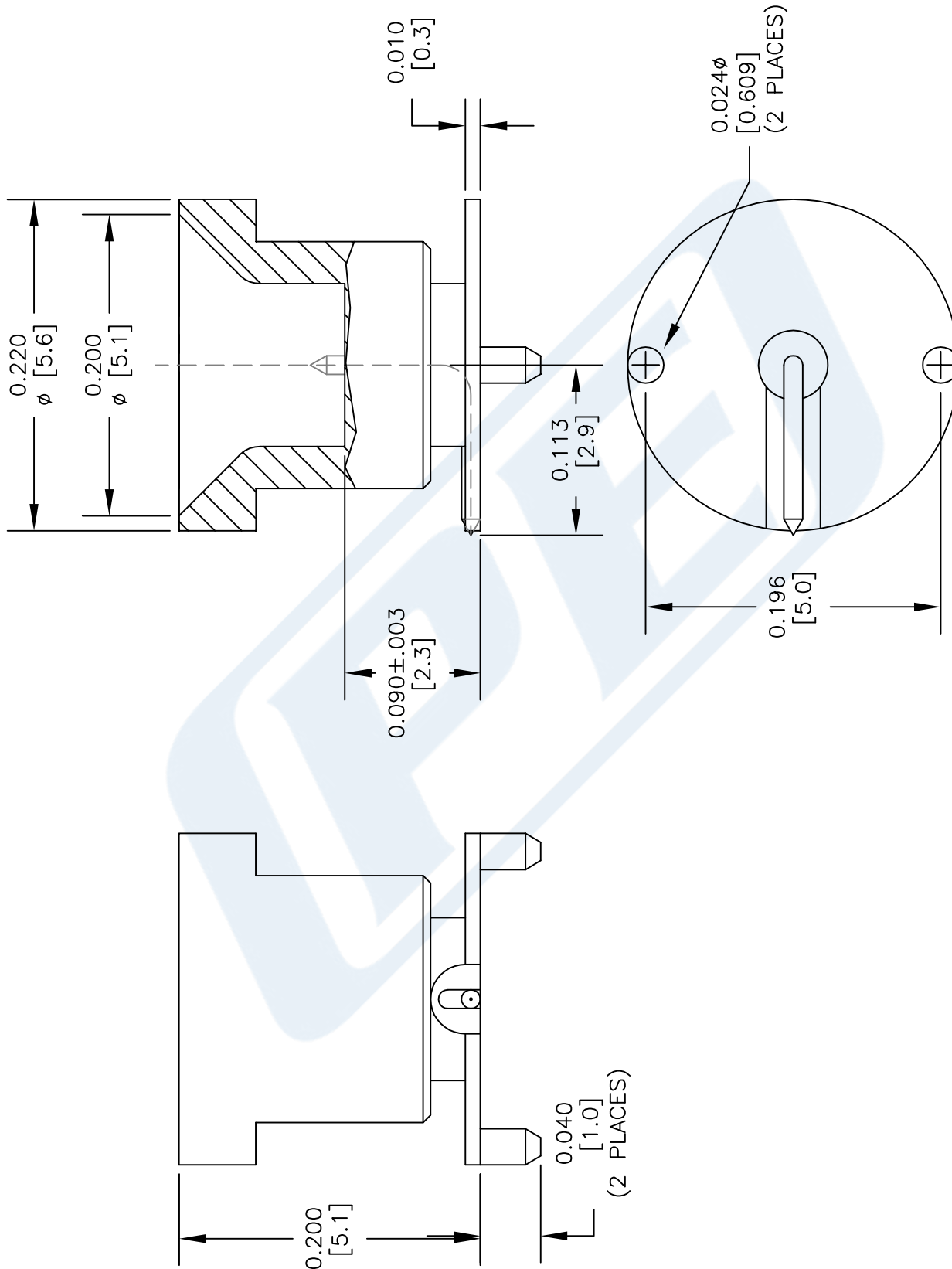
Click the following link (or enter part number in "SEARCH" on website) to obtain additional part information including price, inventory and certifications: [SMP Male Smooth Bore CM Connector Solder Attachment Surface Mount PCB, with 2 Ground Posts PE44944](#)

URL: <https://www.pasternack.com/smp-male-standard-surface-mount-pcb-connector-pe44944-p.aspx>

The information contained in this document is accurate to the best of our knowledge and representative of the part described herein. It may be necessary to make modifications to the part and/or the documentation of the part, in order to implement improvements. Pasternack reserves the right to make such changes as required. Unless otherwise stated, all specifications are nominal. Pasternack does not make any representation or warranty regarding the suitability of the part described herein for any particular purpose, and Pasternack does not assume any liability arising out of the use of any part or documentation.

# PE44944 CAD Drawing

SMP Male Smooth Bore CM Connector Solder Attachment  
Surface Mount PCB, with 2 Ground Posts



DWG TITLE

**PE44944**

NOTES:  
1. UNLESS OTHERWISE SPECIFIED ALL DIMENSIONS ARE NOMINAL.  
2. ALL SPECIFICATIONS ARE SUBJECT TO CHANGE WITHOUT NOTICE AT ANY TIME.  
3. DIMENSIONS ARE IN INCHES [mm].

FSCM NO. 53919

CAD FILE

032014

SCALE N/A

SIZE A

150

**PE PASTERNAK**  
THE ENGINEER'S RF SOURCE

Pasternack Enterprises, Inc.  
P.O. Box 16759 | Irvine | CA | 92623  
Phone: (949) 261-1920 | Fax: (949) 261-7451  
Website: www.pasternack.com | E-Mail: sales@pasternack.com