

ASSEMBLY NOTES:

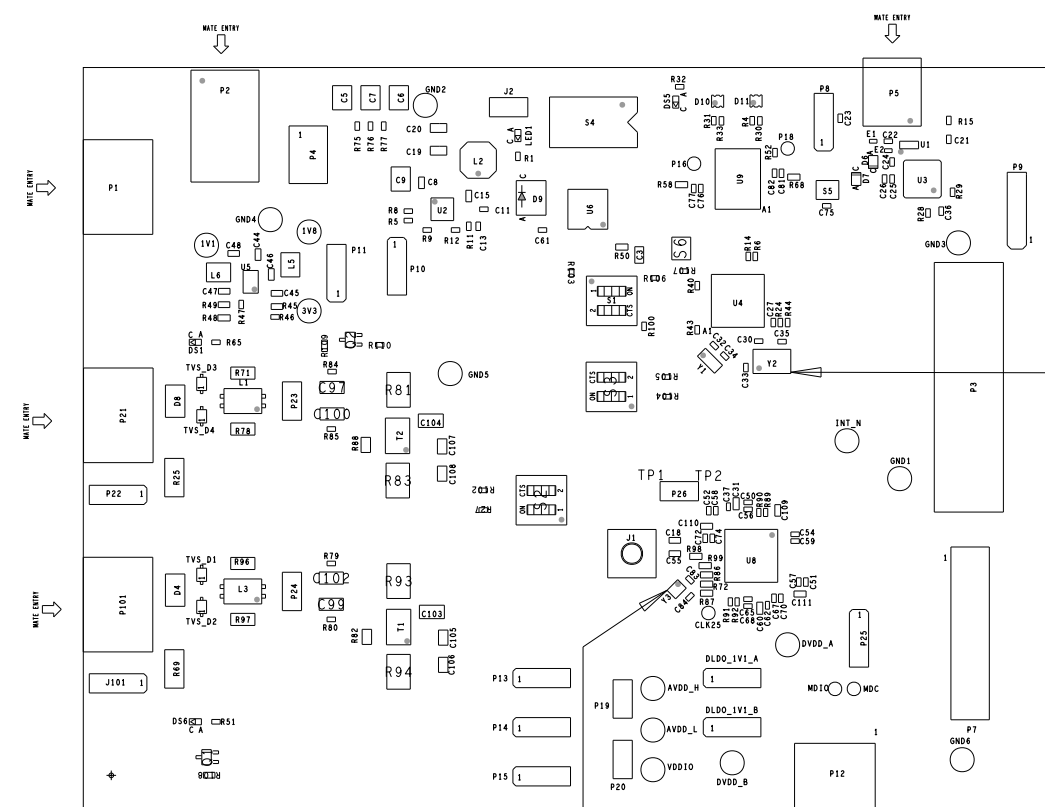
- BOARD ACCEPTABILITY PER ANALOG DEVICES, INC. SPECIFICATION TST00119 (LATEST REVISION).
- REPAIRS PER IPC-7711/21(LATEST REVISION) ARE ALLOWED.
- REPAIRS ARE NOT ALLOWED IN SOLDERMASK FREE AREAS ON EITHER SIDE OF THE BOARD.
- INSERT TERMINAL BLOCK PLUG (M019584) INTO P1, P21 AND P101
- INSERT SHUNTS (M031256) ON THE FOLLOWING CONNECTORS AS SHOWN BELOW...

Positions BEFORE performing test procedure

Ref	Name	Pins	Position	Status
J2	PWR 3.3V	1-2	PWR 3.3V	Removed (Half Inserted)
P4	BOARD PWR	1-2	USB	Inserted
P4	BOARD PWR	3-4	EXT	Inserted
P4	BOARD PWR	5-6	GND	Inserted
P8	uC RESET	1-2	LES_RST	Inserted
P10	LT8619 MODE	2-3	BURST	Inserted
P11	VCCuC	2-3	1V8	Inserted
P13	AVDD_H	2-3	1V8	Inserted
P14	AVDD_L	2-3	1V8	Inserted
P15	VDDIO	2-3	1V8	Inserted
DLDO_1V1_A	DLDO_1V1_A	1-2	EXT_1V1	Inserted
DLDO_1V1_B	DLDO_1V1_B	1-2	EXT_1V1	Inserted
P25	LES_RESET	1-2	RESET_N	Inserted
P22	SH	2-3	"Earth"	Inserted
J101	SH	2-3	"Earth"	Inserted

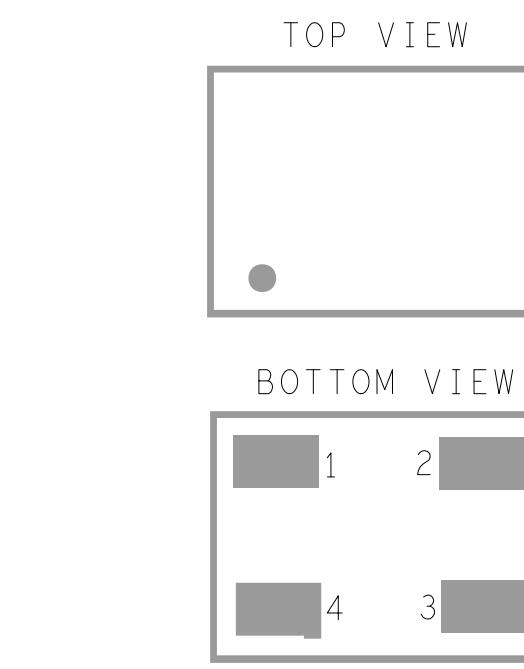
Positions AFTER test procedure for board shipping

Ref	Name	Pins	Position	Status
J2	PWR 3.3V	1-2	PWR 3.3V	Inserted
P4	BOARD PWR	1-2	USB	Inserted
P4	BOARD PWR	3-4	EXT	Inserted
P4	BOARD PWR	5-6	GND	Inserted
P8	uC RESET	1-2	LES_RST	Inserted
P10	LT8619 MODE	2-3	BURST	Inserted
P11	VCCuC	1-2	3V3	Inserted
P13	AVDD_H	1-2	3V3	Inserted
P14	AVDD_L	1-2	3V3	Inserted
P15	VDDIO	1-2	3V3	Inserted
DLDO_1V1_A	DLDO_1V1_A	2-3	DLO_1V1	Inserted
DLDO_1V1_B	DLDO_1V1_B	2-3	DLO_1V1	Inserted
P25	LES_RESET	1-2	RESET_N	Inserted
P22	SH	2-3	"Earth"	Inserted
J101	SH	2-3	"Earth"	Inserted



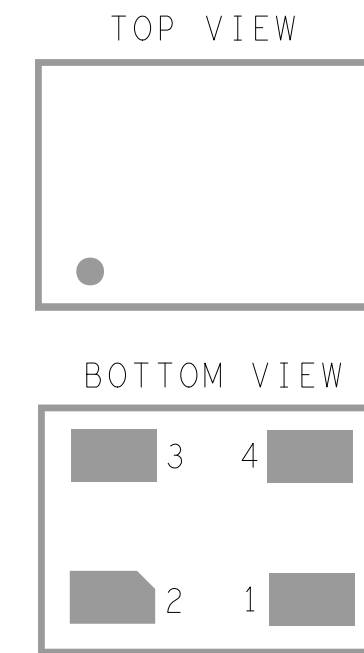
SEE DETAIL A

SEE DETAIL B



YSML197W126H33-ASSY-DETAIL

DETAIL A



YSML79W63H20-ASSY-DETAIL

DETAIL B

REVISIONS			
REV	DESCRIPTION	DATE	APPROVED
A	INITIAL RELEASE	29JUL20	M. RAMOS
B	CHANGES AS PER ECR#100470	24NOV20	M. RAMOS

PRIMARY SIDE

UNLESS OTHERWISE SPECIFIED DIMENSIONS ARE IN MM	APPROVAL	DATE			WWM DIVISION 804 WOBURN STREET WILMINGTON, MA 01887
TOLERANCES	TEMPLATE ENGINEER				
DECIMALS FRACTIONS ANGLES	HARDWARE SERVICES	29JUL20			
.XX -0.254	M. VALE				
.XXX -0.127	HARDWARE SYSTEMS				
.XXXX -0.1270					
MATERIAL	TEST ENGINEER		TITLE		
	COMPONENT ENGINEER	29JUL20	ASSEMBLY		
	M. YAN		EVAL-ADIN2111EBZ		
	TEST PROCESS		CUSTOMER EVAL Z		
	HARDWARE RELEASE	29JUL20			
FINISH	DESIGNER	29JUL20	SIZE	FSCM NO	DRAWING NUMBER
	G. GARCIA		D	24355	01-063822
	PFD ENGINEER	29JUL20			
	M. RAMOS				
	CHECKER				
DO NOT SCALE DWG			SCALE	1/1	SHEET 1 OF 2

8 7 6 5 4 3 2 1

D

D

C

C

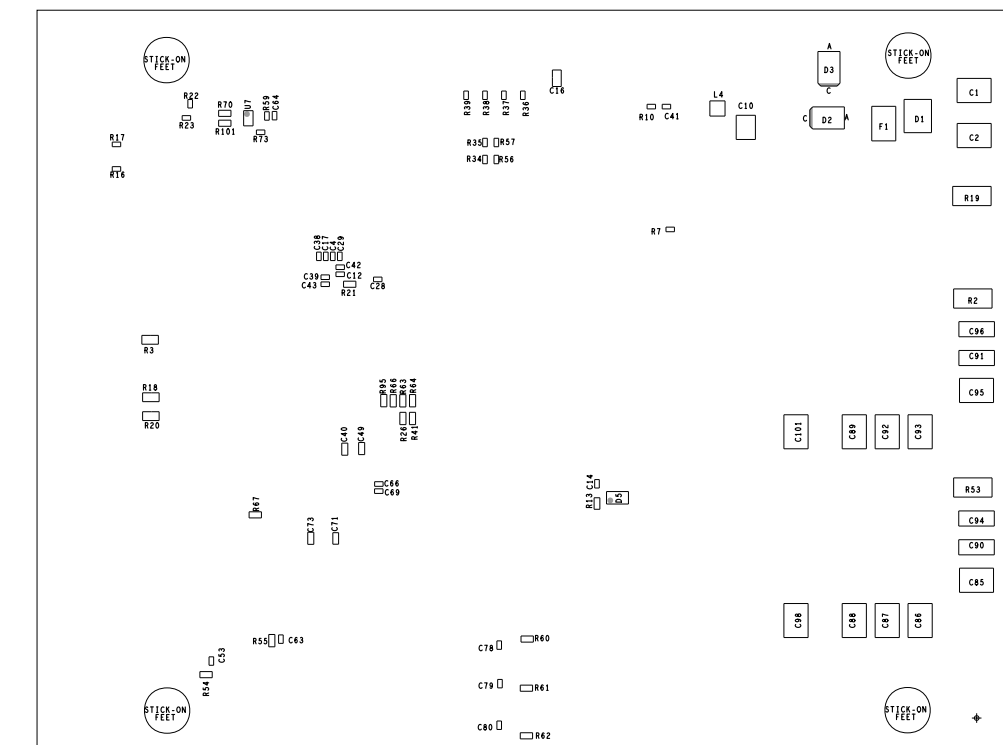
B

B

A

A

6. ATTACH STICK-ON FEET (M018775) ON SECONDARY SIDE AT EACH CORNER.



SECONDARY SIDE



SIZE	FSCM NO	DRAWING NUMBER	REV
D	24355	01-063822	C
SCALE 1/1		SHEET 2 OF 2	

8 7 6 5 4 3 2 1