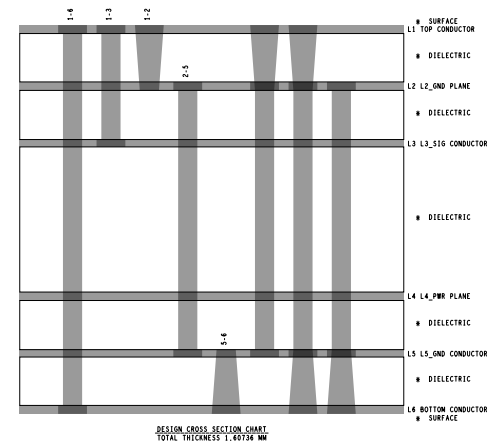
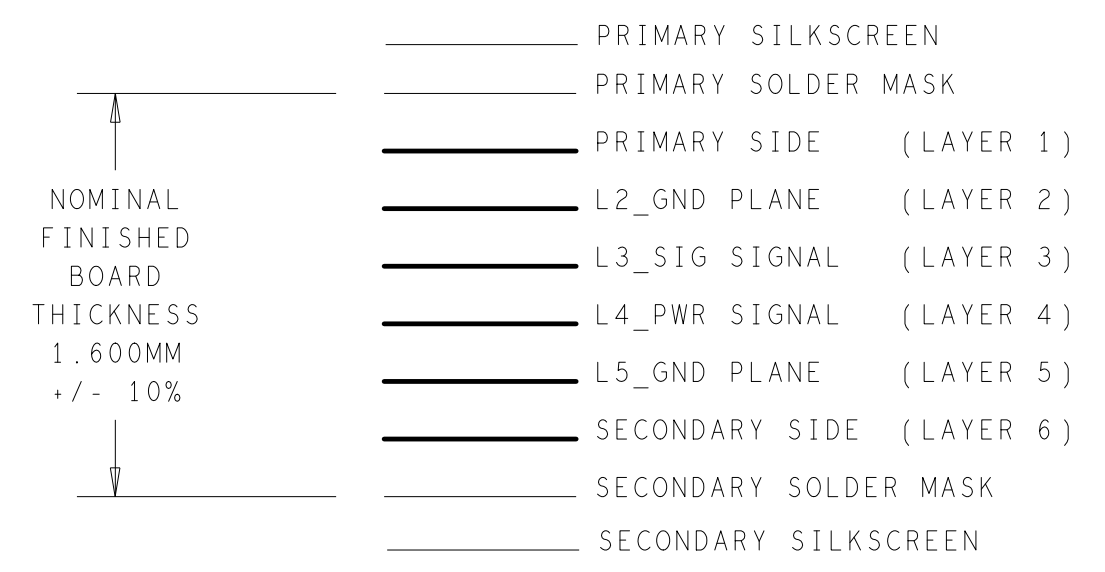


REVISIONS			
REV	DESCRIPTION	DATE	APPROVED
A	INITIAL RELEASE	29JUL20	M.RAMOS
B	CHANGES AS PER ECR#100470	24NOV20	M.RAMOS

6 LAYER STACKUP



SPECIFICATIONS:

ROHS COMPLIANCE NOTE: HOMOGENOUS MATERIALS IN THIS BOARD SHALL BE COMPLIANT THE EU RoHS DIRECTIVE 2002/95/EC

MATERIALS; ALL LAMINATES AND BONDING MATERIALS SHOULD BE SELECTED FROM IPC-4101 OR IPC-4103, MINIMUM Tg>170degC, Td>300degC, U.L. RATING OF 94 V-0

MATERIAL FAMILY; ISOLA 370HR

CLADDING; EXTERNAL LAYERS .5 OZ. COPPER, OVERPLATE TO 1.5 OZ. INTERNAL SIGNAL LAYERS .5 OZ. COPPER. INTERNAL PLANE LAYERS 1 OZ. COPPER.

NOTE: IF THE LAYER STACKUP CONFLICTS WITH THE ABOVE CLADDING SPECIFICATIONS THEN THE LAYER STACKUP SHALL TAKE PRECEDENCE.

SOLDER MASK; SHALL BE LIQUID PHOTOIMAGEABLE (LPI) APPLIED ON BOTH SIDES OVER BARE COPPER OR GOLD AND SHALL MEET IPC-SM-840 (LATEST REV.) CLASS 3. COLOR GREEN.

SILK SCREEN; SHALL BE PERMANENT NON-CONDUCTIVE EPOXY INK, COLOR: WHITE SYNTHETIC INKJET PRINTING ALLOWED FOR DENSE BOARDS, COLOR: WHITE

SURFACE FINISH; ENIG (ELECTROLESS NICKEL/IMMERSION GOLD) PER IPC-4552 LATEST REVISION

INTENTIONAL SHORTS; IF SUPPLIED DATA INCLUDES A FILE "READ_ME.2", THEN INTENTIONAL NET SHORTS EXIST. CUSTOMER REVIEW AND APPROVAL IS REQUIRED IF SUPPLIED DATA REPORTS ANY CONDITION THAT DOES NOT MATCH "READ_ME.2" FILE PROVIDED.

TEST REQUIREMENTS; 100% NETLIST ELECTRICAL VERIFICATION USING CUSTOMER SUPPLIED IPC-D-356 NETLIST FOR OPENS AND SHORTS WHEN "GERBER DATA" IS PROVIDED. THIS VERIFICATION ALSO REQUIRED FOR "ODB++" DATA PER EMBEDDED NETLIST.

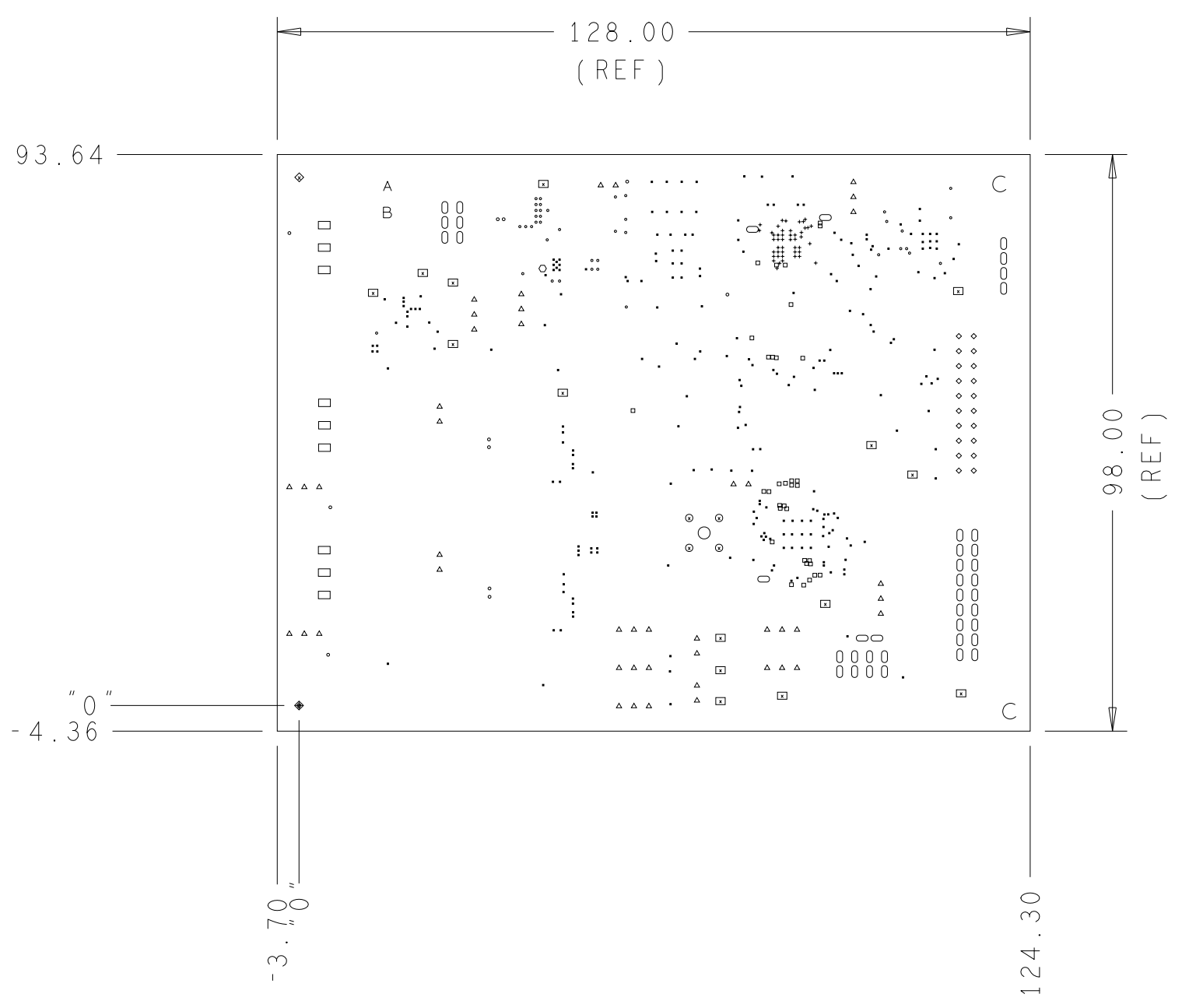
REQUIREMENTS:

- REFER TO IPC-6010 SERIES (LATEST REV.), CLASS 2 FOR FABRICATION UNLESS OTHERWISE SPECIFIED.
- ACCEPTABILITY PER ANALOG DEVICES, INC. SPECIFICATION TST00115, (LATEST REVISION.)
- MODIFICATIONS TO THE ARTWORK ARE NOT ALLOWED WITHOUT WRITTEN AUTHORIZATION.
- HOLE PATTERN TOLERANCES FOR UNDIMENSIONED HOLES SHALL BE A DIAMETER OF 0.127 MM FROM THEIR TRUE POSITION.
- PLATED HOLE WALL THICKNESS SHALL NOT BE LESS THAN 0.0254MM MINIMUM AVERAGE, WITH NO READING LESS THAN 0.02032 BY CROSS SECTION.
- HOLE DIAMETERS APPLY AFTER PLATING.
- FINISHED CONDUCTOR WIDTHS SHALL NOT BE REDUCED FROM THE NOMINAL INDICATED ON THE MASTER PATTERN, BY MORE THAN THE CONDUCTOR THICKNESS.
- MINIMUM DESIGN LINE WIDTH IS 0.1 MM
- MINIMUM DESIGN SPACING IS 0.12 MM.
- NON-FUNCTIONAL PAD REMOVAL FROM INNER SIGNAL LAYERS MAY BE PERFORMED AFTER CUSTOMER APPROVAL.
- IF PAD SIZES PROVIDED ARE NOT LARGE ENOUGH TO MAINTAIN ANNULAR RING REQUIREMENT, MFR. MAY REQUEST APPROVAL TO TEAR DROP PADS TO MAINTAIN ANNULAR RING. (AT PAD TO TRACE INTERSECTION ONLY AND ELECTRICAL INTEGRITY MUST BE MAINTAINED.)
- THIEVING MAY BE ADDED TO COMPENSATE FOR LOW COPPER DENSITY AREAS ON THIS DESIGN ONLY AFTER REVIEW AND APPROVAL FROM THE CUSTOMER:
 - A. THIEVING TO CARD EDGE, FIDUCIALS, NON-PLATED THROUGH HOLES, ALL OTHER FEATURES TO BE 5.08MM MINIMUM.
 - B. THERE SHALL BE NO THIEVING IN ANY AREAS FREE OF SOLDER MASK OR INTERNAL COPPER PLANES.
- MFR. TO LEGIBLY ETCH OR STAMP/SCREEN WITH PERMANENT NON-CONDUCTIVE INK ON SECONDARY SIDE IN A CLEAR AREA UNLESS OTHERWISE INDICATED;
 - A. U.L. CODE-FLAMMABILITY RATING
 - B. DATE CODE (STAMP).
 - C. LOT NUMBER
 - D. MFR LOGO
 - E. SUCCESSFUL ELECTRICAL TEST.
- REPAIRS PER IPC-7711/21 (LATEST REV.) ARE ALLOWED.
- BLIND VIAS TO BE PLATED SHUT AND PLANARIZED

HOLE TOLERANCE

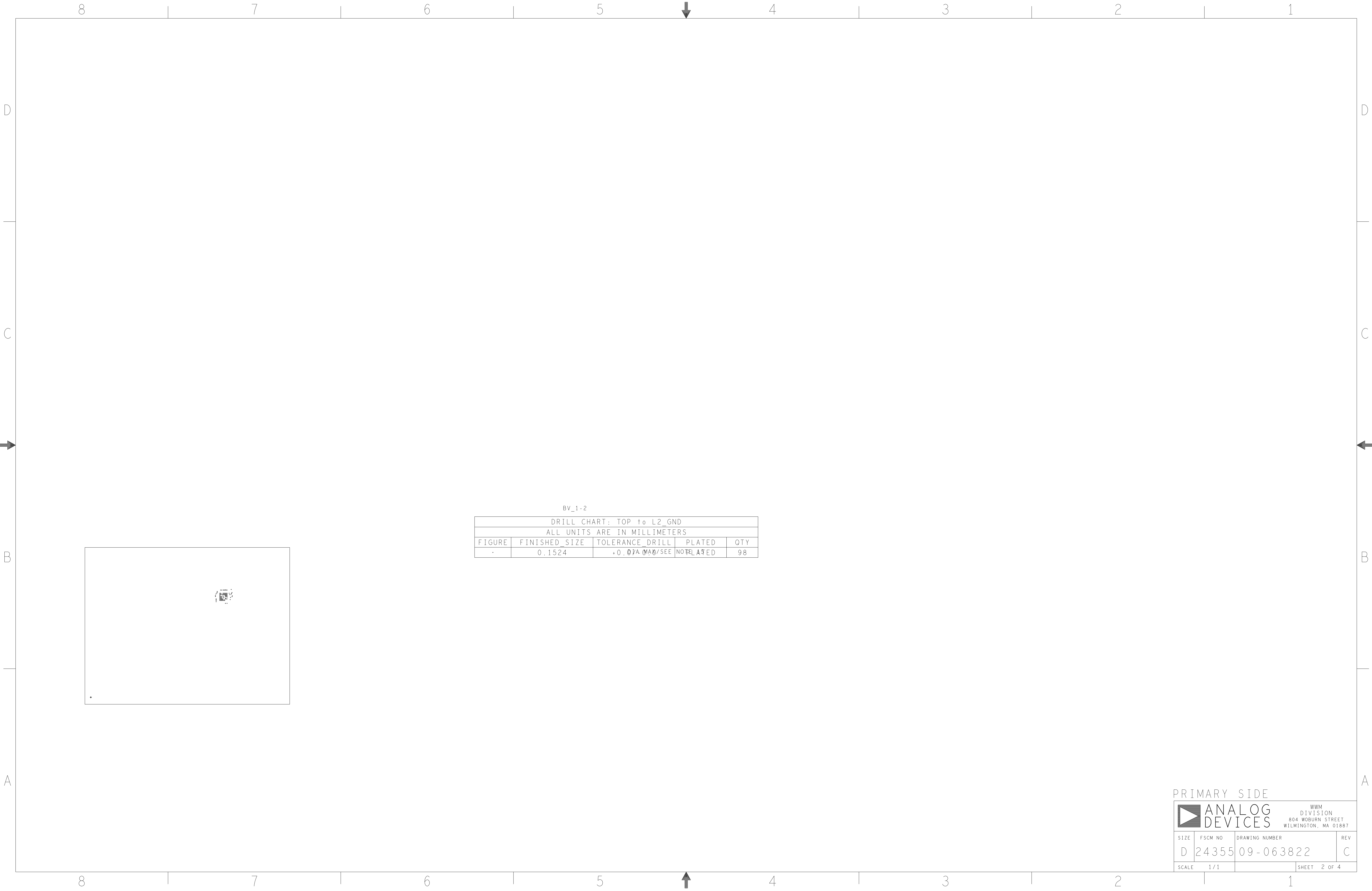
UNLESS SPECIFIED
 PLATED: +/- 0.0762 MM
 NON PLATED: +/- 0.0508 MM

DRILL CHART: TOP +o BOTTOM				
ALL UNITS ARE IN MILLIMETERS				
FIGURE	FINISHED SIZE	TOLERANCE DRILL	PLATED	QTY
.	0.1524	+0.0/-0.010 MAX	PLATED	46
*	0.2032	+0.0/-0.0	PLATED	34
-	0.254	+0.0/-0.0	PLATED	245
o	0.3048	+0.0/-0.0	PLATED	1
.	0.4064	+0.0/-0.0	PLATED	40
-	0.508	+0.0/-0.0	PLATED	11
*	0.889	+0.0/-0.0	PLATED	20
.	1.016	+0.0/-0.0	PLATED	45
o	1.0922	+0.0/-0.0	PLATED	5
o	1.143	+0.0/-0.0	PLATED	36
□	1.27	+0.0/-0.0	PLATED	9
o	1.524	+0.0/-0.0	PLATED	1
□	1.6002	+0.0/-0.0	PLATED	15
*	1.651	+0.0/-0.0	PLATED	4
◆	3.2	+0.07/-0.07	PLATED	2
A	1.6	+0.0/-0.0	NON-PLATED	1
B	1.803	+0.0/-0.0	NON-PLATED	1
C	3.2	+0.07/-0.07	NON-PLATED	2



PRIMARY SIDE

UNLESS OTHERWISE SPECIFIED DIMENSIONS ARE IN MM TOLERANCES DECIMALS FRACTIONS ANGLES .XX +/-0.254 +/-1/32 -- 2 .XXX +/-0.127 .XXXX +/-0.1270	APPROVAL	DATE	 WWM DIVISION 804 WOBURN STREET WILMINGTON, MA 01887
	TEMPLATE ENGINEER	29JUL20	
MATERIAL	HARDWARE SERVICES		TITLE FABRICATION EVAL-ADIN2111EBZ CUSTOMER EVAL Z
	M.VALE		
	HARDWARE SYSTEMS		
FINISH	TEST ENGINEER		SIZE FSCM NO DRAWING NUMBER REV D 24355 09-063822 C
	COMPONENT ENGINEER	29JUL20	
	M.YAN		
DO NOT SCALE DWG	HARDWARE RELEASE	29JUL20	SCALE 1/1 SHEET 1 OF 4
	K.JABATAN		
	DESIGNER	29JUL20	
	G.GARCIA		
	PRO-ENGINEER	29JUL20	
	M.RAMOS		
	CHECKER		



BV_1-2

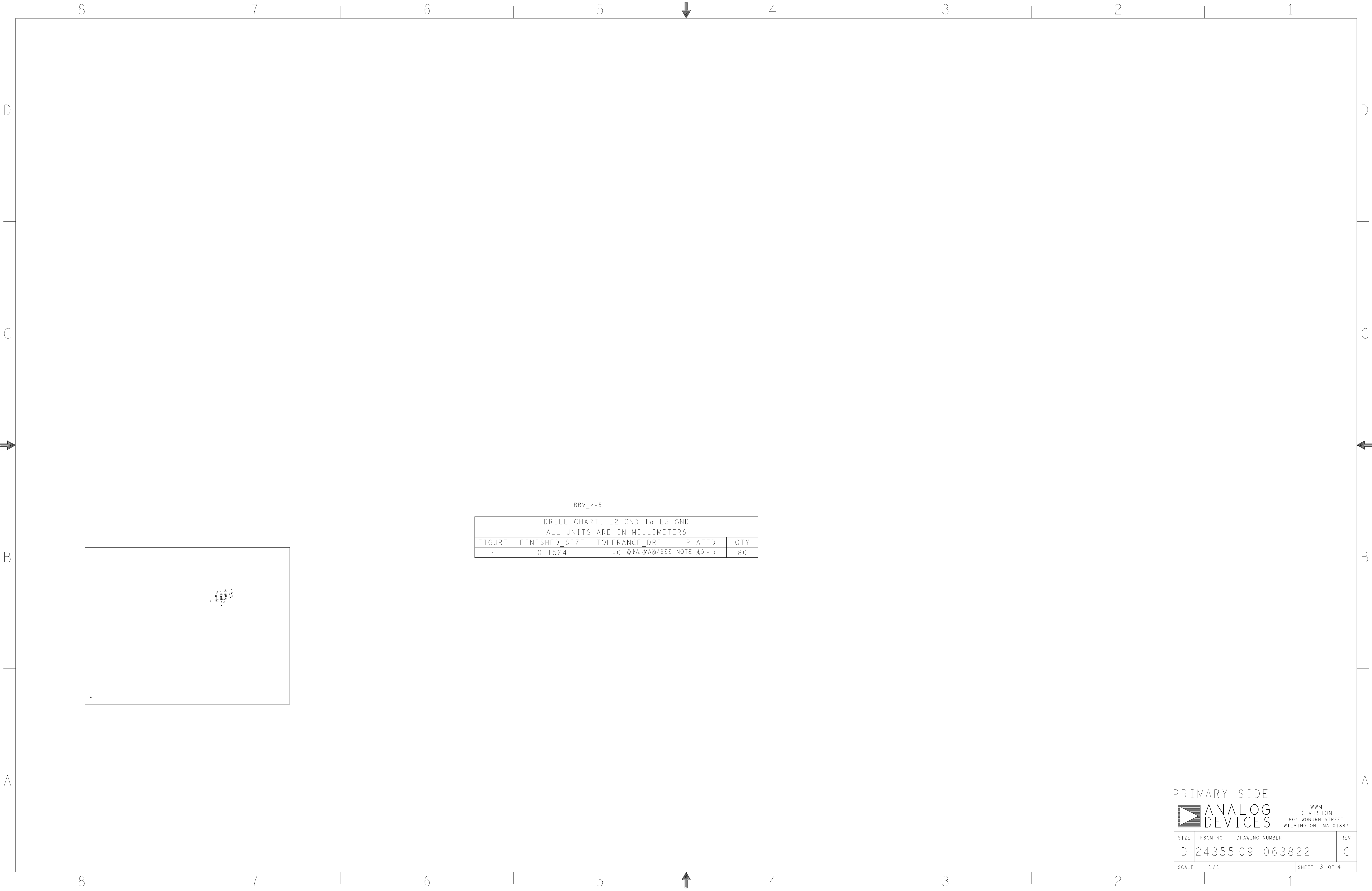
DRILL CHART: TOP to L2_GND				
ALL UNITS ARE IN MILLIMETERS				
FIGURE	FINISHED_SIZE	TOLERANCE_DRILL	PLATED	QTY
·	0.1524	+0.01A MAX/SEE	NOT PLATED	98

PRIMARY SIDE



SIZE	FSCM NO	DRAWING NUMBER	REV
D	24355	09-063822	C

SCALE	1/1	SHEET	2 OF 4
-------	-----	-------	--------



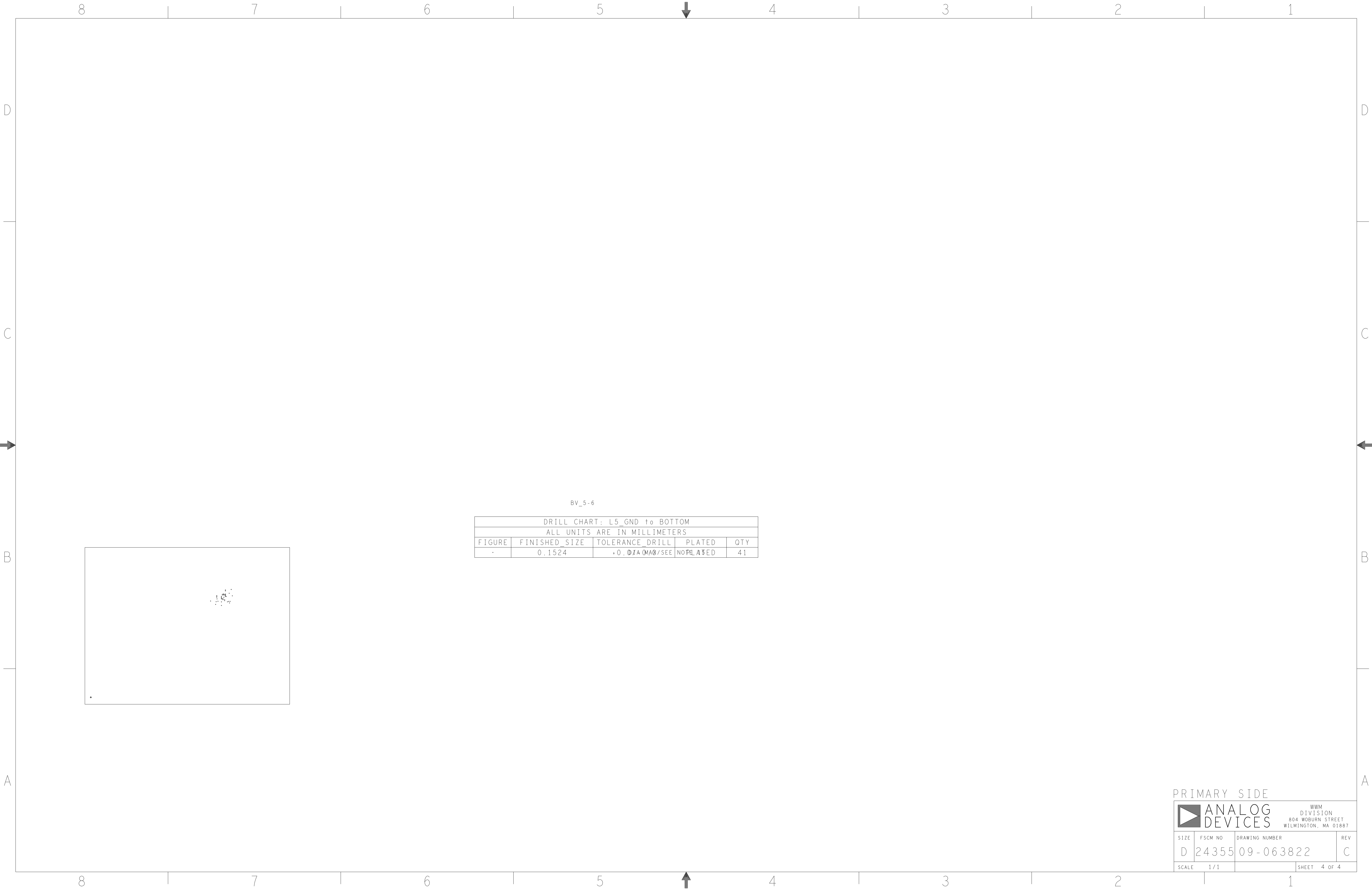
BBV_2-5

DRILL CHART: L2_GND to L5_GND				
ALL UNITS ARE IN MILLIMETERS				
FIGURE	FINISHED_SIZE	TOLERANCE_DRILL	PLATED	QTY
.	0.1524	+0.01A MAX/SEE	NOT PLATED	80

PRIMARY SIDE



SIZE	FSCM NO	DRAWING NUMBER	REV
D	24355	09-063822	C
SCALE 1/1		SHEET 3 OF 4	



BV_5-6

DRILL CHART: L5_GND to BOTTOM				
ALL UNITS ARE IN MILLIMETERS				
FIGURE	FINISHED_SIZE	TOLERANCE_DRILL	PLATED	QTY
.	0.1524	+0.0127/0.0076/SEE	NO PLATED	41

PRIMARY SIDE



SIZE	FSCM NO	DRAWING NUMBER	REV
D	24355	09-063822	C
SCALE 1/1		SHEET 4 OF 4	