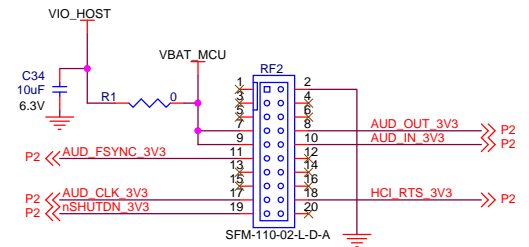
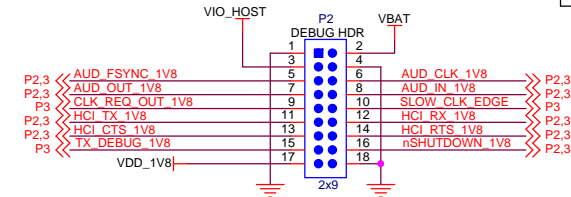


RF1 Connector		RF2 Connector	
Pin#	EM Adapter Pin Assignment	Pin#	EM Adapter Pin Assignment
1	GND	1	+1.8V (Optional)
3	MODULE_UART_CTS	3	+1.8V (Optional)
5	SLOW_CLK	5	+1.8V (Optional)
7	MODULE_UART_RX	7	+3.3V
9	MODULE_UART_TX	9	+3.3V
11	I2C_SDA	11	MODULE_AUDIO_FSYNC
13	I2C_SCL	13	RF_GPIO2
15	SDIO_CLK	15	CC_RSTN
17	SDIO_CMD	17	MODULE_AUDIO_CLK
19	GND	19	WC1_nSHUTD
2	SDIO_D0	2	GND
4	SDIO_D1	4	ANALOG_AUDIO_DATA_LEFT
6	SDIO_D2	6	ANALOG_AUDIO_DATA_RIGHT
8	SDIO_D3	8	MODULE_AUDIO_DATA_OUT
10	RF_GPIO0	10	MODULE_AUDIO_DATA_IN
12	RF_GPIO1	12	USBM
14	SPI_CS0	14	USBP
16	SPI_CLK	16	NC
18	SPI_MOSI	18	MODULE_UART_RTS
20	SPI_MISO	20	RF_GPIO3



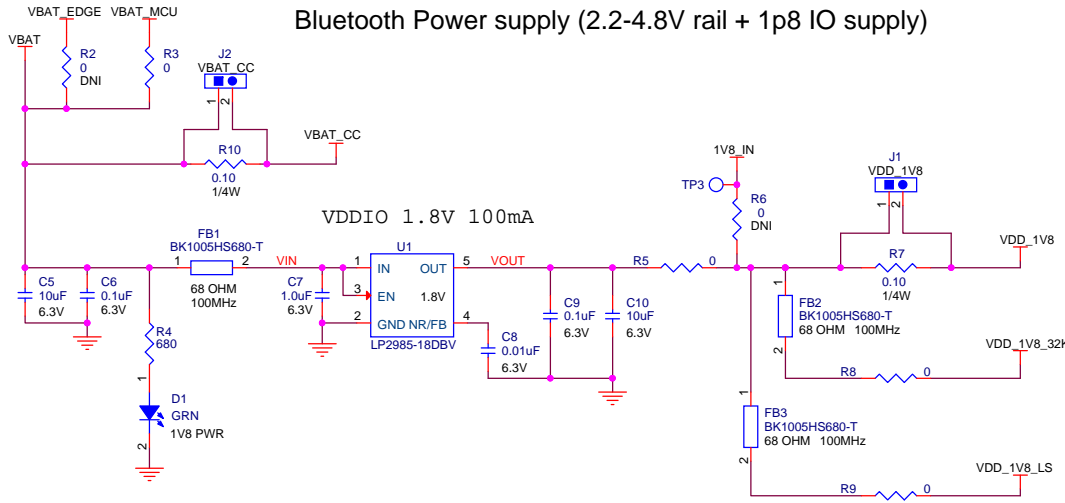
Configuration Notes:		
	01-EM	02-COM
RF1	Install	Removed
RF2	Install	Removed



Board Interface

		Title CC256xCQFN-EM		
Drawn By RIZWAN MURJI	Layout RIZWAN MURJI	Date Tuesday, October 18, 2016	Rev A	Page 1 of 3

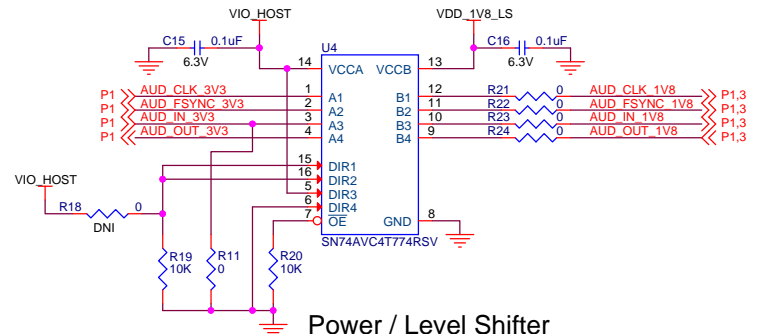
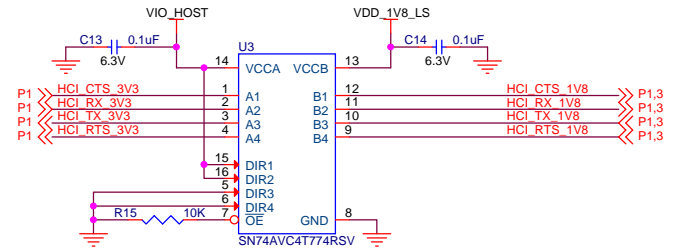
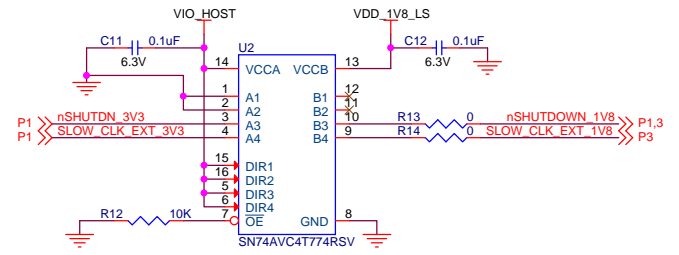
Bluetooth Power supply (2.2-4.8V rail + 1p8 IO supply)



Configuration Notes:

	01-EM	02-COM
R2	Removed	Install
R3	Install	Removed

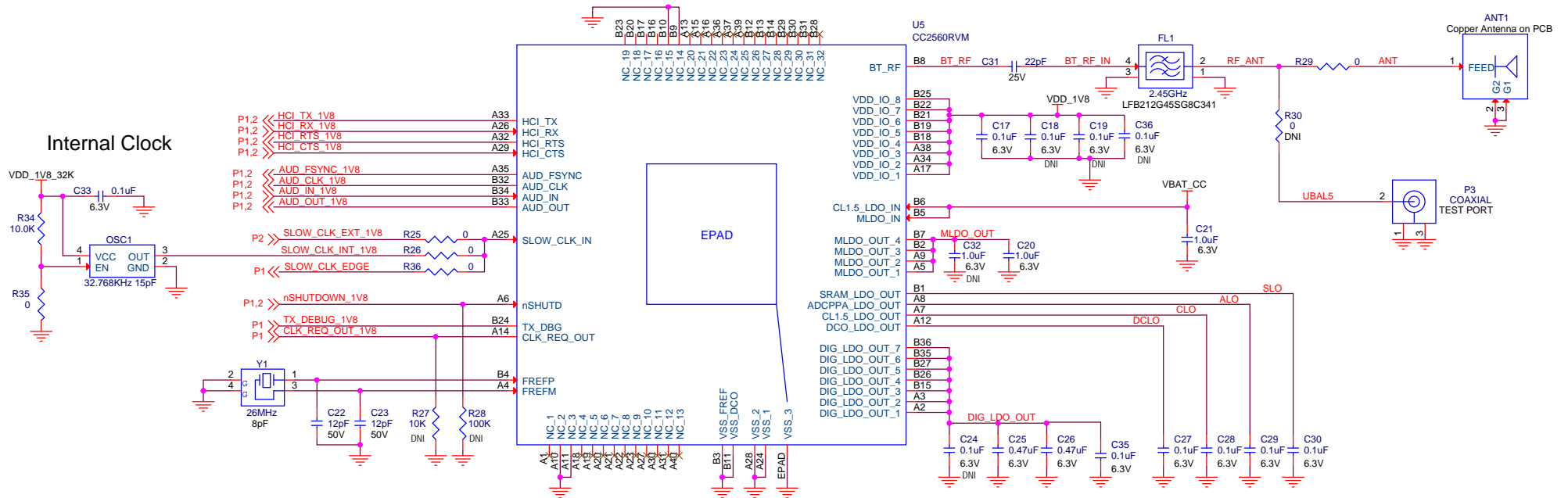
Level Shifters



Power / Level Shifter

Title CC256xCQFN-EM		
Size B	EDGE No	Rev A
Date Tuesday, October 18, 2016		Page 2 of 3

CC256x HCI Class 1.5 capable Bluetooth device



CC256xQFN

Title CC256xCQFN-EM		
Size B	EDGE No	Rev A
Date Tuesday, October 18, 2016		Page 3 of 3

