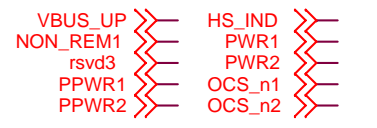
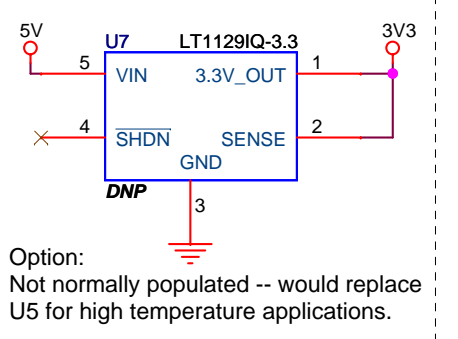
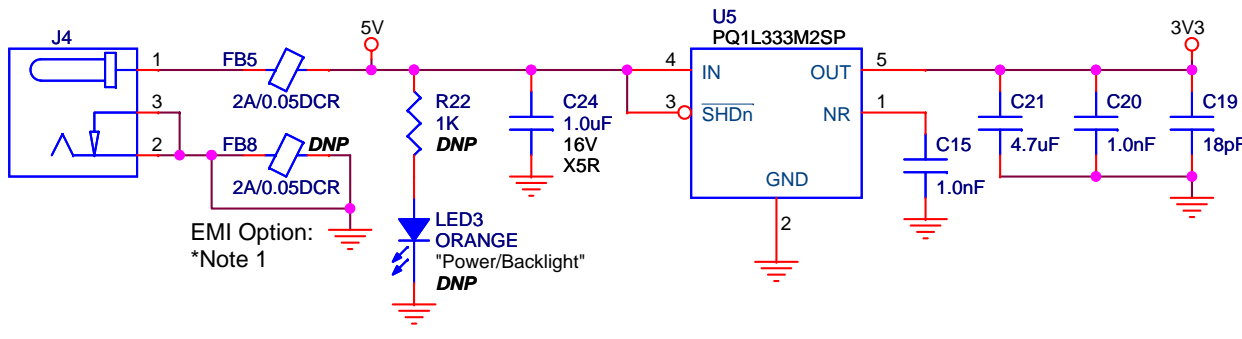


ESD Option: *Note 1

*Note 1:
To use these devices, cut the traces that short them, as needed.
(Not normally populated.)



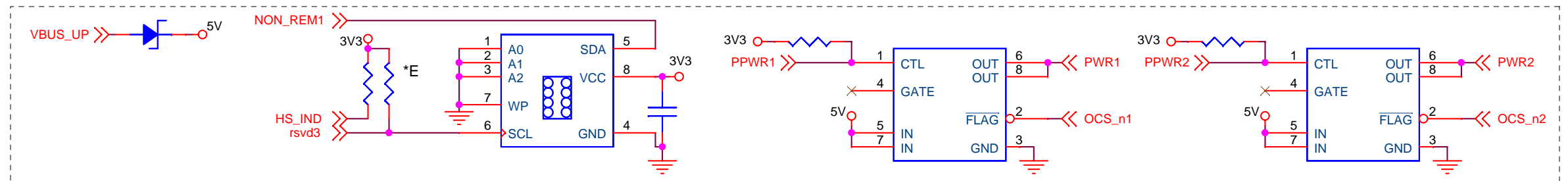


SMSC
SUCCESS BY DESIGN

SMSC - Austin
10900-B Stonelake Blvd.
Austin, TX 78759
512.502.0070

Title: Evaluation Board for USB2412		Copper	Rev A
Part Number: EVB-USB2412			
Size: B	Project Name:		
Date: Friday, October 30, 2009		Sheet 2 of 3	

SMSC TEST ONLY -- Do not populate



SMSC
SUCCESS BY DESIGN

SMSC - Austin
10900-B Stonelake Blvd.
Austin, TX 78759
512.502.0070

Title: Evaluation Board for USB2412		
Part Number: EVB-USB2412		
Size: B	Project Name: Copper	Rev: A
Date: Friday, October 30, 2009		Sheet 3 of 3