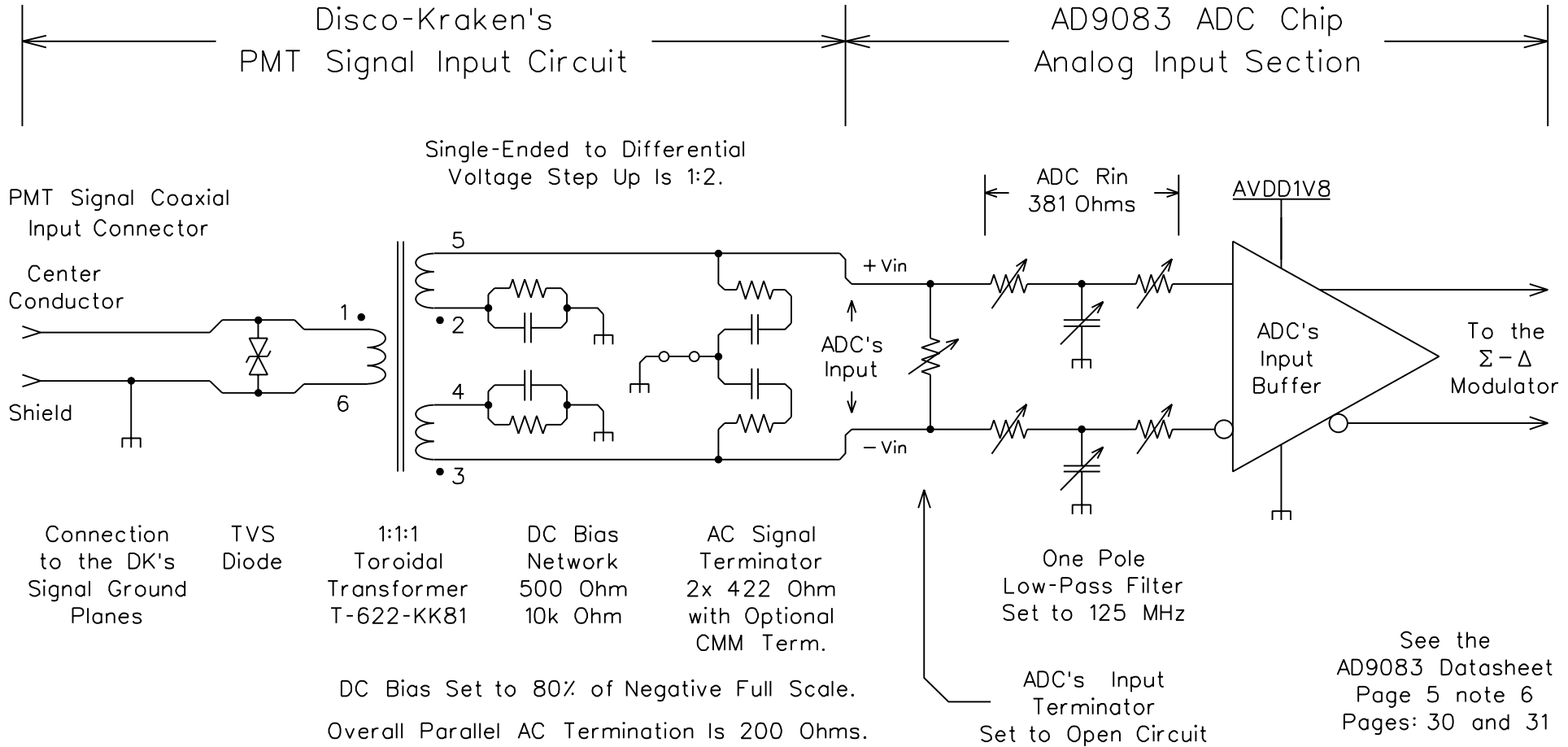


PMT to ADC Analog Input Circuit



For the ADC's Input to Swing from Its Static 80% of Neg. FS to 100% of Pos. FS Requires a 0.81 V Pulse Across the Primary of the Input Transformer aka 16.2 mA through 50 Ohms.

The Capacitor Symbol Represents Parallel 1 μ Fd and 47 nFd Ceramic Capacitors

The Recommended Common Mode at the ADC's Input is 0.7 Volts

The ADC's Nominal V_{max} is 1.8 Vpp
 ---> Pos. Full Scale Is: +Vin 1.15V -Vin 0.25V
 ---> Neg. Full Scale Is: +Vin 0.25V -Vin 1.15V

The ADC Actively Holds the Inputs of Its Input Buffer at a Common Mode of 1.1 Volts