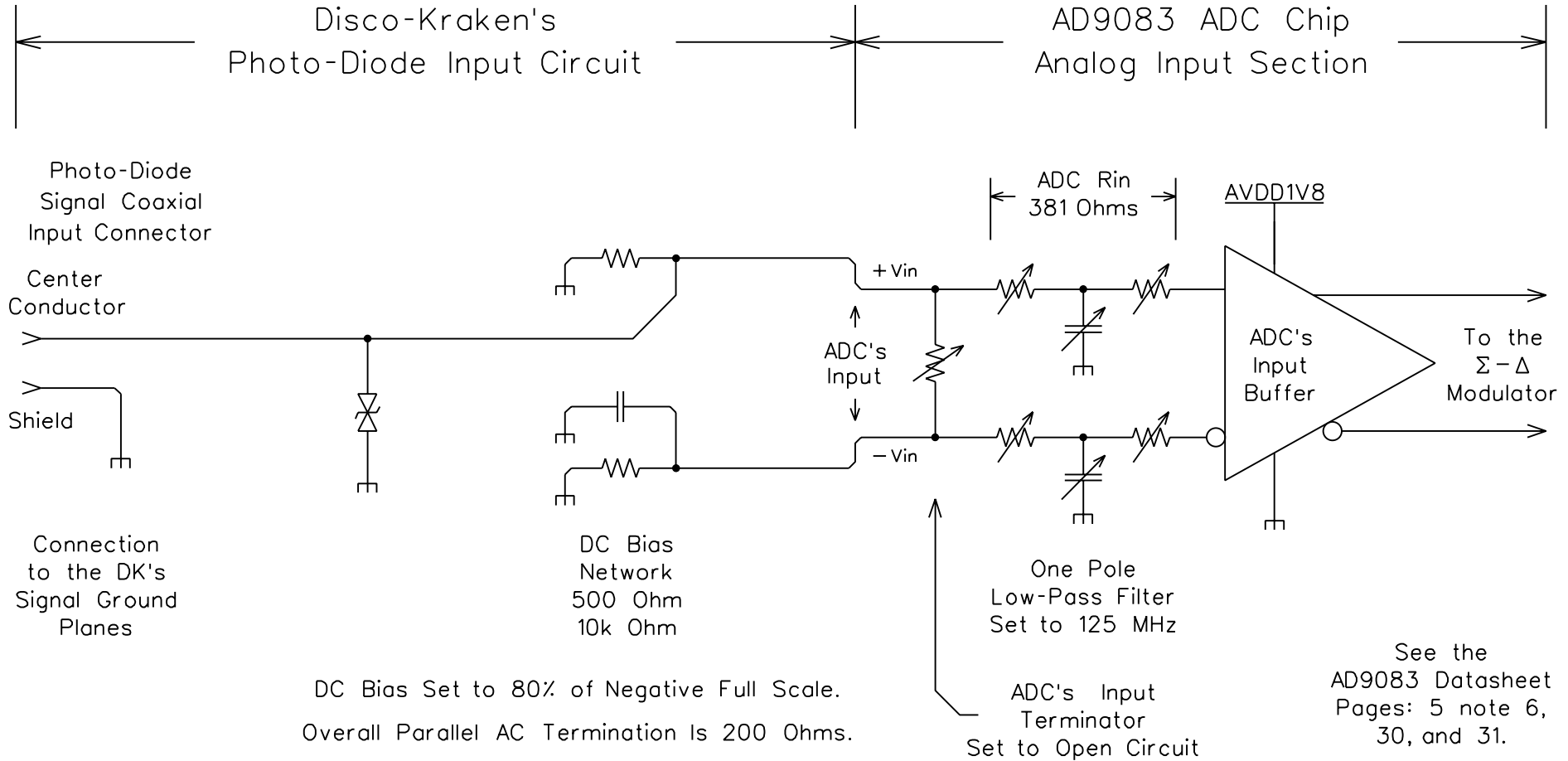


Photo-Diode to ADC Analog Input Circuit



For the ADC's Input to Swing from Its Static 80% of Neg. FS to 100% of Pos. FS Requires a 1.62 V Positive Input Pulse. A 1.62 V Pulse across the 200 Ohm load requires 8.1 mA.

The Capacitor Symbol Represents Parallel 10 uFd and 47 nFd Ceramic Capacitors

The Recommended Common Mode at the ADC's Input is 0.7 Volts

The ADC's Nominal V_{max} is 1.8 Vpp
 ---> Pos. Full Scale Is: +Vin 1.15V -Vin 0.25V
 ---> Neg. Full Scale Is: +Vin 0.25V -Vin 1.15V

The ADC Actively Holds the Inputs of Its Input Buffer at a Common Mode of 1.1 Volts