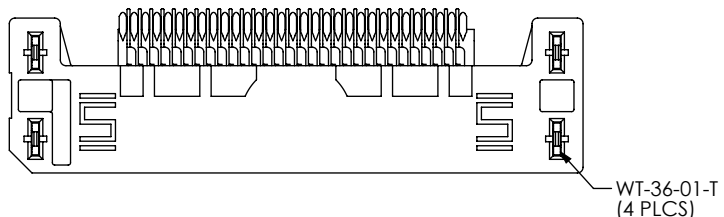


DO NOT
SCALE FROM
THIS PRINT



No OF POSITIONS
(PER ROW)

-010, -020,
-030, -040, -050

LEAD STYLE

-01

TAPE & REEL (SEE NOTES 4 & 5)

-TR: TAPE & REEL
-FR: FULL REEL QTY TAPE & REEL

OPTION

*-FL: FRICTION LOCK
(ONLY AVAILABLE UP TO 30 POSITIONS)
(FOR MATING WITH ERM5...DV...-FL)

-RA: RIGHT ANGLE

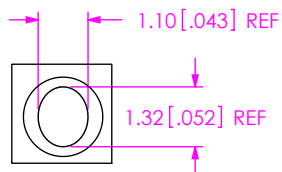
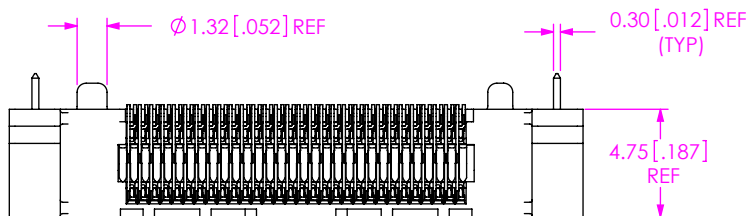
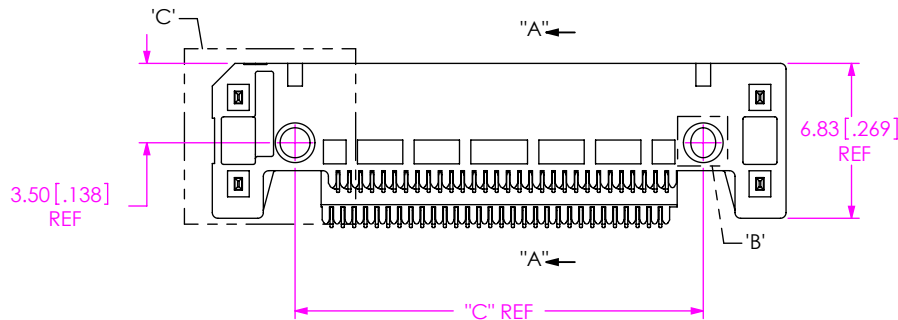
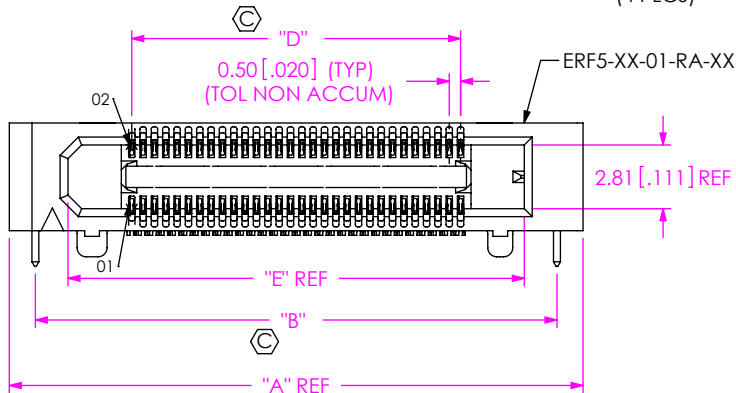
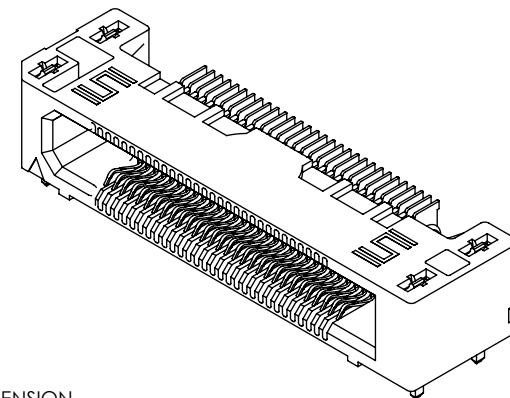
ROW SPECIFICATION

-D: DOUBLE

(* = NOT TOOLED)

PLATING SPECIFICATION

-L: 10µ" SELECTIVE GOLD IN CONTACT AREA
MATTE TIN ON TAIL
(USE C-291-01-L & C-292-01-L)
-S: 30µ" SELECTIVE GOLD IN CONTACT AREA
MATTE TIN ON TAIL
(USE C-291-01-S & C-292-01-S)



DETAIL 'B'
SCALE 6 : 1

FIG 1
(ERF5-030-01-X-D-RA-XX-XR SHOWN)

NOTES:

1. Ⓢ REPRESENTS A CRITICAL DIMENSION.
2. MINIMUM PUSHOUT FORCE: 1.6N [0.36 Lb].
3. NOTE DELETED.
4. -TR/-FR OPTION ORDERS INVOLVING REELS AS WELL AS SOME TRAY PACKAGED ORDERS WILL BE PACKAGED ACCORDING TO THE SAMTEC PACKAGING EFFICIENCY STANDARDS (SPES) FOUND ON WWW.SAMTEC.COM.
5. ATTACH LABEL TO EACH REEL.

No. OF POS.	
-010, -020, -030, -040	0.10 [.004]
-050	0.13 [.005]

POSITION	"A"	"B"	"C"	"D"	"E"
-010	15.30 [0.602]	13.00 [0.512]	8.00 [0.315]	4.50 [0.177]	10.12 [0.398]
-020	20.30 [0.799]	18.00 [0.709]	13.00 [0.512]	9.50 [0.374]	15.12 [0.595]
-030	25.30 [0.996]	23.00 [0.906]	18.00 [0.709]	14.50 [0.571]	20.12 [0.792]
-040	30.30 [1.193]	28.00 [1.102]	23.00 [0.906]	19.50 [0.768]	25.12 [0.989]
-050	35.30 [1.390]	33.00 [1.299]	28.00 [1.102]	24.50 [0.965]	30.12 [1.186]

UNLESS OTHERWISE SPECIFIED,
DIMENSIONS ARE IN
MILLIMETERS [INCHES].
TOLERANCES ARE:
DECIMALS ANGLES
X.X: ±0.3 [0.1]
X.XX: ±0.13 [0.05]
X.XXX: ±0.050 [0.020]

PROPRIETARY NOTE
THIS DOCUMENT CONTAINS CONFIDENTIAL AND
PROPRIETARY INFORMATION AND ALL DESIGN,
MANUFACTURING, REPRODUCTION, USE, PATENT RIGHTS
AND SALES RIGHTS ARE EXPRESSLY RESERVED BY SAMTEC,
INC. THIS DOCUMENT SHALL NOT BE DISCLOSED, IN WHOLE
OR PART, TO ANY UNAUTHORIZED PERSON OR ENTITY NOR
REPRODUCED, TRANSFERRED OR INCORPORATED IN ANY
OTHER PROJECT IN ANY MANNER WITHOUT THE EXPRESS
WRITTEN CONSENT OF SAMTEC, INC.



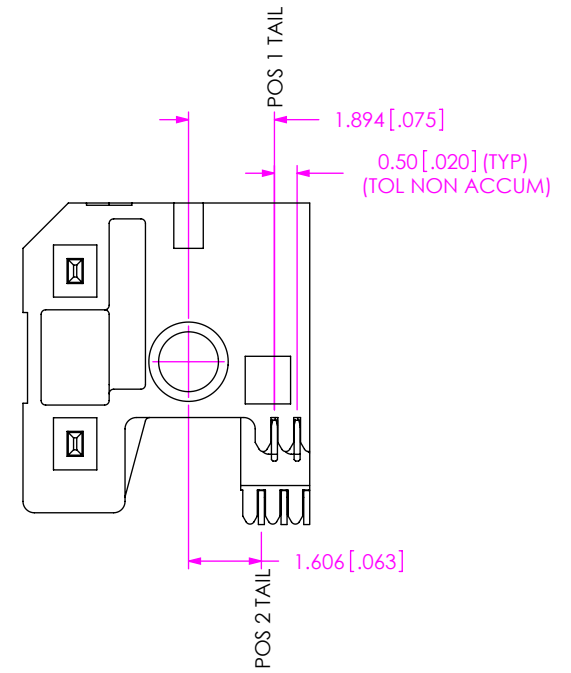
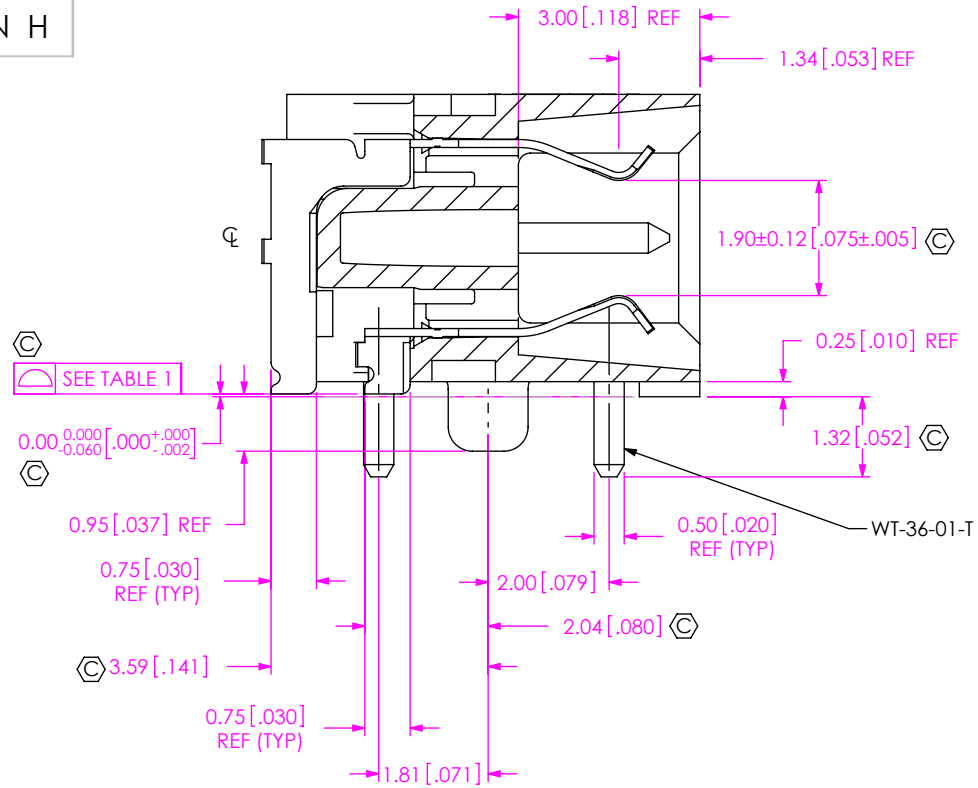
520 PARK EAST BLVD, NEW ALBANY, IN 47150
PHONE: 812-944-6733 FAX: 812-948-5047
e-Mail: info@SAMTEC.com code 55322

MATERIAL: DO NOT SCALE DRAWING SHEET SCALE: 2:1
INSULATOR: LCP, COLOR: BLACK
CONTACT: BeCu
WT: PHOS BRONZE

DESCRIPTION:
0.5 MM EDGE RATE SOCKET ASSEMBLY

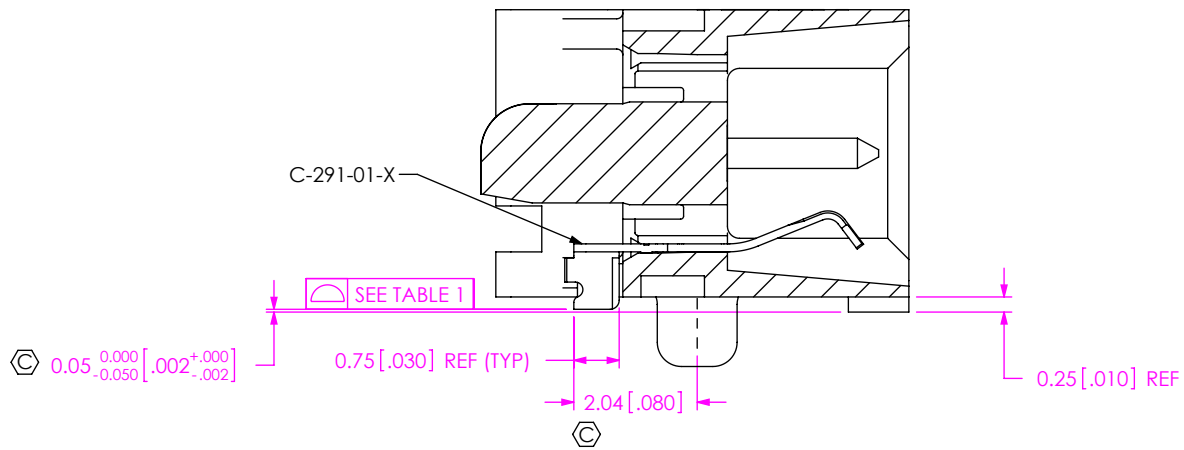
DWG. NO.
ERF5-XXX-01-X-D-RA-XX-XR

BY: M MURILLO 05/20/09 SHEET 1 OF 3



DETAIL 'C'
 SCALE 6 : 1

SECTION "A"- "A"
 SCALE 8 : 1



IN PROCESS 1
 (FILL C-291-01-X)

PROPRIETARY NOTE
 THIS DOCUMENT CONTAINS CONFIDENTIAL AND PROPRIETARY INFORMATION AND ALL DESIGN, MANUFACTURING, REPRODUCTION, USE, PATENT RIGHTS AND SALES RIGHTS ARE EXPRESSLY RESERVED BY SAMTEC, INC. THIS DOCUMENT SHALL NOT BE DISCLOSED, IN WHOLE OR PART, TO ANY UNAUTHORIZED PERSON OR ENTITY NOR REPRODUCED, TRANSFERRED OR INCORPORATED IN ANY OTHER PROJECT IN ANY MANNER WITHOUT THE EXPRESS WRITTEN CONSENT OF SAMTEC, INC.

DO NOT SCALE DRAWING
 SHEET SCALE: 2:1



520 PARK EAST BLVD, NEW ALBANY, IN 47150
 PHONE: 812-944-6733 FAX: 812-948-5047
 e-Mail info@SAMTEC.com code 55322

DESCRIPTION:
 0.5 MM EDGE RATE SOCKET ASSEMBLY

DWG. NO.
ERF5-XXX-01-X-D-RA-XX-XR

BY: M MURILLO 05/20/09 SHEET 2 OF 3

IN PROCESS 2
(FILL C-292-01-X)

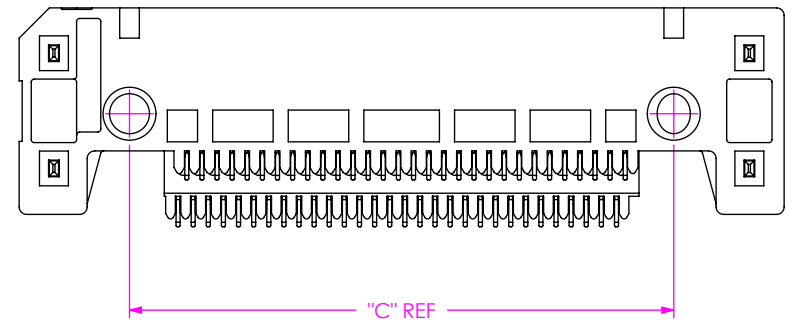
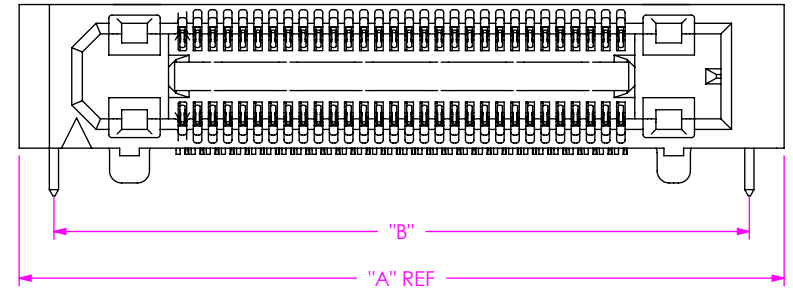
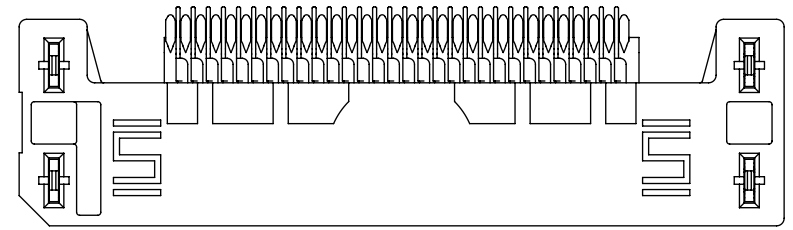
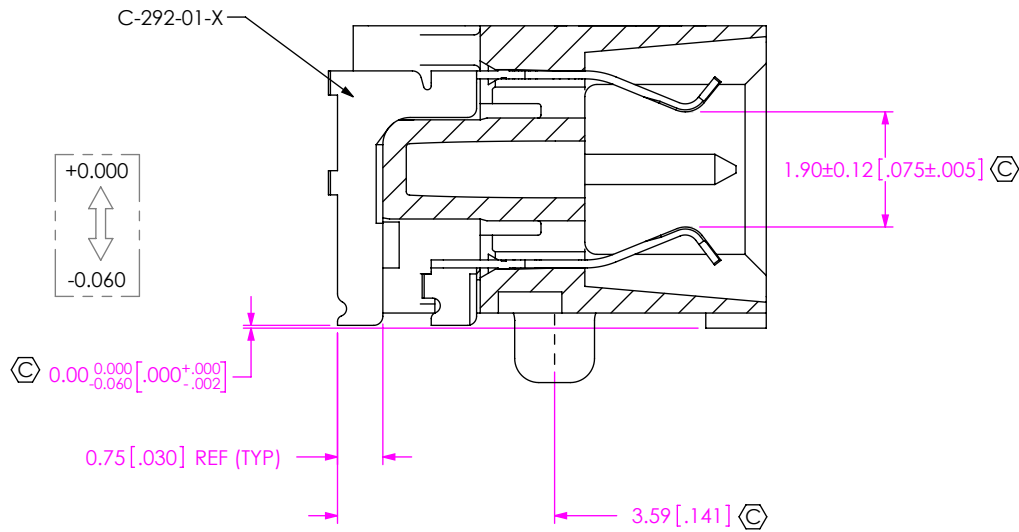


FIG 2
(ERF5-030-01-X-D-RA-FL-XR SHOWN)
(SAME AS FIG 1, EXCEPT AS SHOWN)

PROPRIETARY NOTE
THIS DOCUMENT CONTAINS CONFIDENTIAL AND PROPRIETARY INFORMATION AND ALL DESIGN, MANUFACTURING, REPRODUCTION, USE, PATENT RIGHTS AND SALES RIGHTS ARE EXPRESSLY RESERVED BY SAMTEC, INC. THIS DOCUMENT SHALL NOT BE DISCLOSED, IN WHOLE OR PART, TO ANY UNAUTHORIZED PERSON OR ENTITY NOR REPRODUCED, TRANSFERRED OR INCORPORATED IN ANY OTHER PROJECT IN ANY MANNER WITHOUT THE EXPRESS WRITTEN CONSENT OF SAMTEC, INC.

DO NOT SCALE DRAWING

SHEET SCALE: 2:1

samtec

520 PARK EAST BLVD, NEW ALBANY, IN 47150
PHONE: 812-944-6733 FAX: 812-948-5047
e-Mail info@SAMTEC.com code 55322

DESCRIPTION:
0.5 MM EDGE RATE SOCKET ASSEMBLY

DWG. NO.
ERF5-XXX-01-X-D-RA-XX-XR

BY: M MURILLO 05/20/09 SHEET 3 OF 3