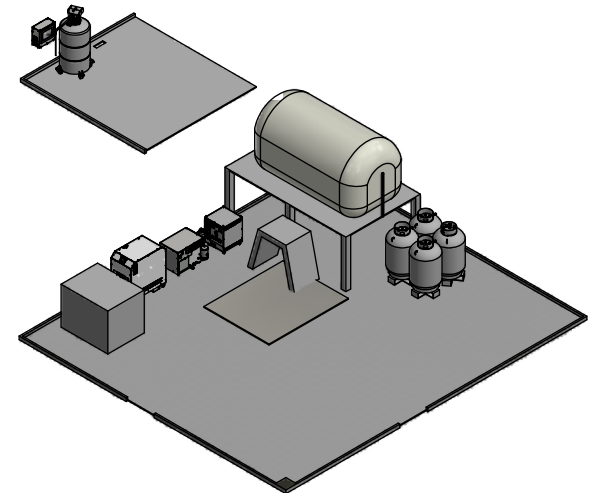
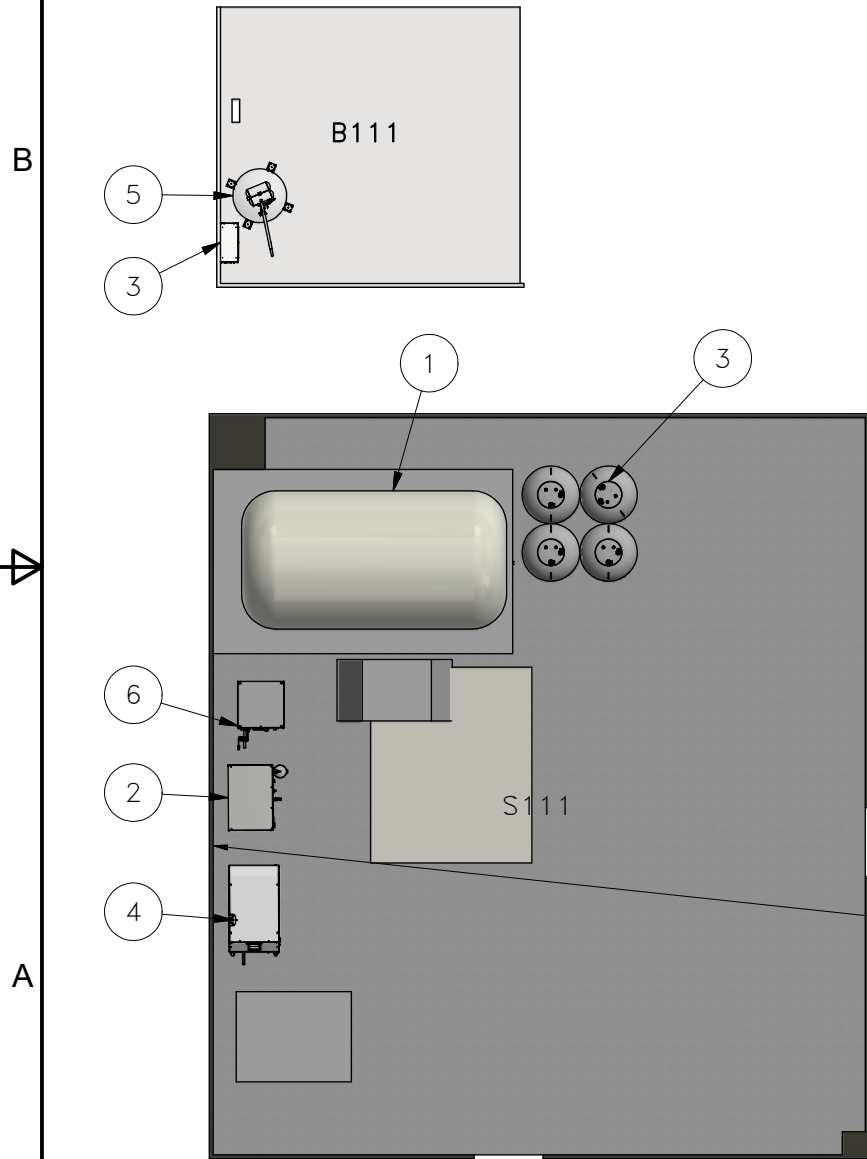


ALL INFORMATION CONTAINED IN THIS DOCUMENT SHOULD BE USED FOR REFERENCE PURPOSES ONLY & ARE SUBJECT TO CHANGE WITHOUT PRIOR NOTIFICATION. ALSO, THIS DOCUMENT IS CONSIDERED PROPRIETARY & THE SOLE PROPERTY OF CRYOMECH, INC. & SHOULD NOT BE REPRODUCED IN ANY MANNER WITHOUT PRIOR WRITTEN APPROVAL.

PARTS LIST		
ITEM	QTY	PART #
1	1	Atmospheric Recovery Bag
2	1	Helium Recovery Compressor
3	4	Storage Cylinders
4	1	Automatic Purifier
5	1	LHeP22 Liquid Helium Plant
6	1	CPA1110 Compressor
7	1	LHeP22 Control Panel



APPROXIMATE LOCATION OF LOW PRESSURE MANIFOLD (FROM CUSTOMER RECOVERY LINE)

THIRD ANGLE PROJECTION  **CRYOMECH, INC**
 113 FALSO DRIVE SYRACUSE, N.Y. 13211
 Tel: (315)455-2555 Fax:(315)455-2544

ALL DIMENSIONS ARE IN INCHES
 TOLERANCES: FRACTIONS ±1/32 DECIMALS XXX=±.005 XX=±.01 X=±.1
 ANGLES ±.5° ALLOVER FINISH 25 Ra
 CONCENTRICITY .005 TOTAL INDICATOR RUN OUT
 PERPENDICULAR ±.002 (UNLESS OTHERWISE SPECIFIED)

NAME: LHeP22-NI and MP HRS with AP

DWG #: S111/B111 Room Layout SHT 1 OF 3

MATERIAL:

DWN BY: JHK DATE: 3JAN20 SCALE: DWG SIZE: A

1ST CHK: DATE: 2ND CHK: DATE:

CUST: 32326, 32327, 32328 BTA:

USED ON	NEXT ASS'Y	QTY

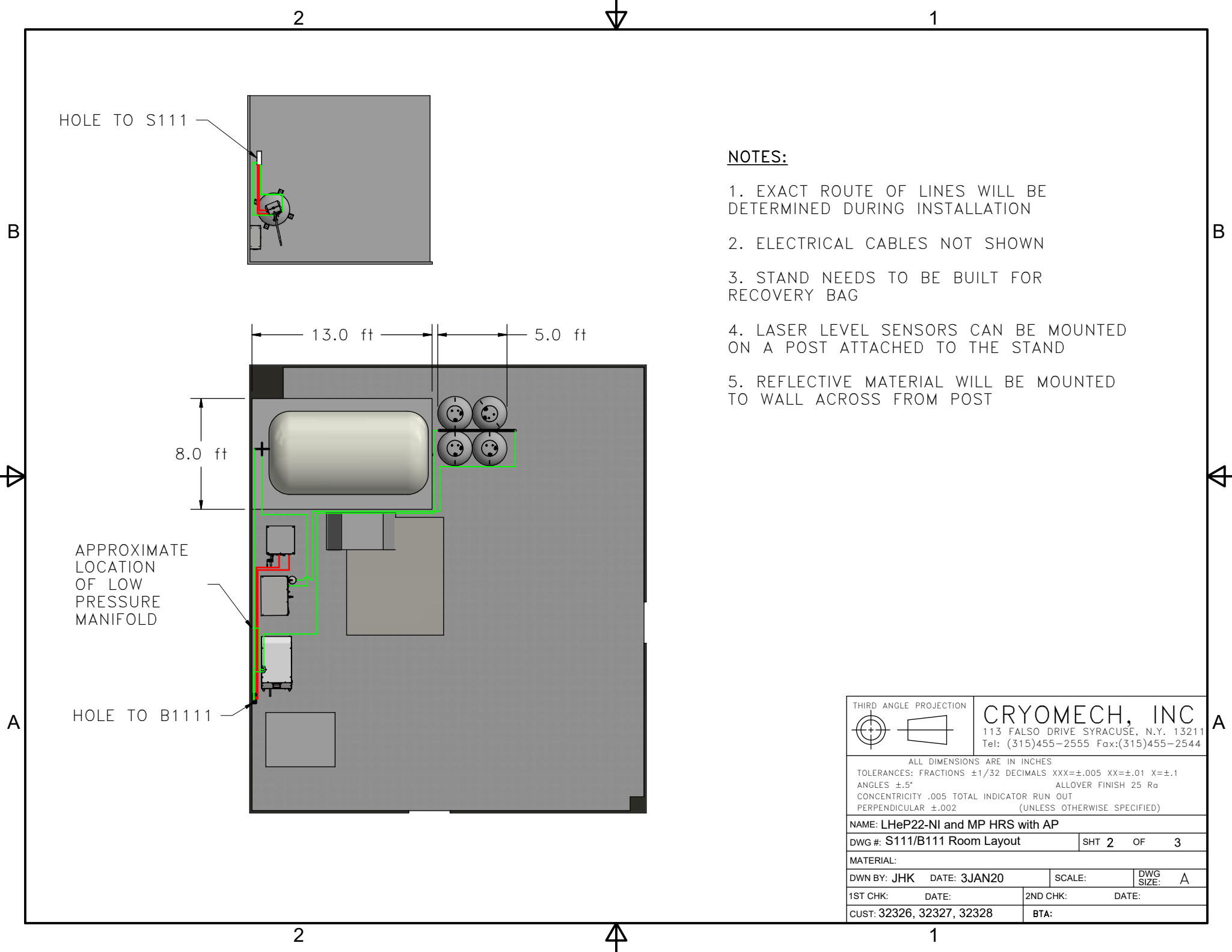
ECN	ZONE	REV	DESCRIPTION	DATE

2

1

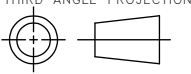
2

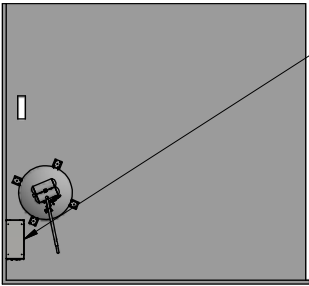
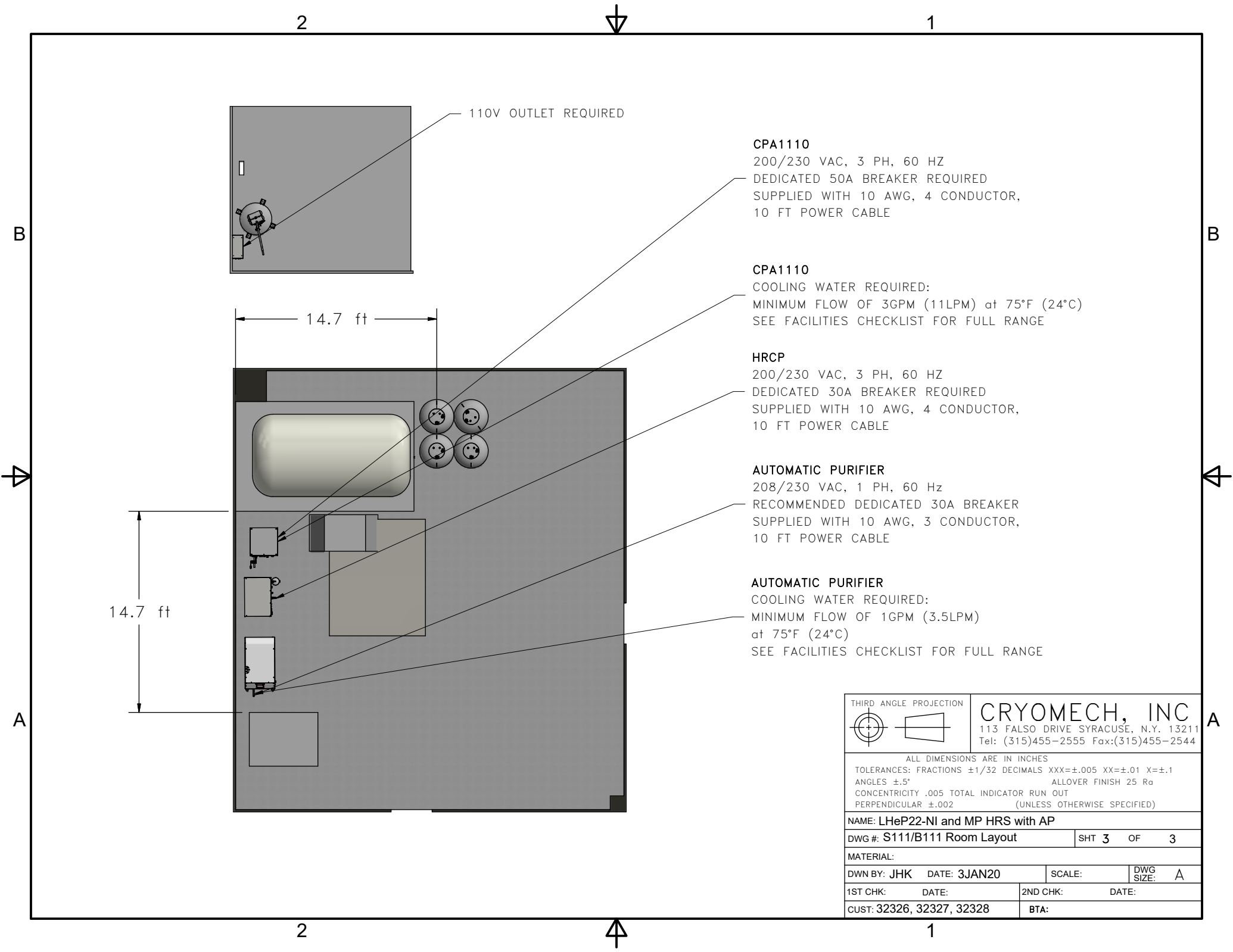
1



NOTES:

1. EXACT ROUTE OF LINES WILL BE DETERMINED DURING INSTALLATION
2. ELECTRICAL CABLES NOT SHOWN
3. STAND NEEDS TO BE BUILT FOR RECOVERY BAG
4. LASER LEVEL SENSORS CAN BE MOUNTED ON A POST ATTACHED TO THE STAND
5. REFLECTIVE MATERIAL WILL BE MOUNTED TO WALL ACROSS FROM POST

THIRD ANGLE PROJECTION				CRYOMECH, INC 113 FALSO DRIVE SYRACUSE, N.Y. 13211 Tel: (315)455-2555 Fax:(315)455-2544	
ALL DIMENSIONS ARE IN INCHES TOLERANCES: FRACTIONS ±1/32 DECIMALS XXX=±.005 XX=±.01 X=±.1 ANGLES ±.5° ALLOVER FINISH 25 Ra CONCENTRICITY .005 TOTAL INDICATOR RUN OUT PERPENDICULAR ±.002 (UNLESS OTHERWISE SPECIFIED)					
NAME: LHeP22-NI and MP HRS with AP					
DWG #: S111/B111 Room Layout				SHT 2 OF 3	
MATERIAL:					
DWN BY: JHK		DATE: 3JAN20		SCALE:	DWG SIZE: A
1ST CHK:		DATE:		2ND CHK:	DATE:
CUST: 32326, 32327, 32328				BTA:	



110V OUTLET REQUIRED

CPA1110
 200/230 VAC, 3 PH, 60 HZ
 DEDICATED 50A BREAKER REQUIRED
 SUPPLIED WITH 10 AWG, 4 CONDUCTOR,
 10 FT POWER CABLE

CPA1110
 COOLING WATER REQUIRED:
 MINIMUM FLOW OF 3GPM (11LPM) at 75°F (24°C)
 SEE FACILITIES CHECKLIST FOR FULL RANGE

HRCP
 200/230 VAC, 3 PH, 60 HZ
 DEDICATED 30A BREAKER REQUIRED
 SUPPLIED WITH 10 AWG, 4 CONDUCTOR,
 10 FT POWER CABLE

AUTOMATIC PURIFIER
 208/230 VAC, 1 PH, 60 Hz
 RECOMMENDED DEDICATED 30A BREAKER
 SUPPLIED WITH 10 AWG, 3 CONDUCTOR,
 10 FT POWER CABLE

AUTOMATIC PURIFIER
 COOLING WATER REQUIRED:
 MINIMUM FLOW OF 1GPM (3.5LPM)
 at 75°F (24°C)
 SEE FACILITIES CHECKLIST FOR FULL RANGE

14.7 ft

14.7 ft

THIRD ANGLE PROJECTION		CRYOMECH, INC	
		113 FALSO DRIVE SYRACUSE, N.Y. 13211	
		Tel: (315)455-2555 Fax:(315)455-2544	
ALL DIMENSIONS ARE IN INCHES			
TOLERANCES: FRACTIONS ±1/32 DECIMALS XXX=±.005 XX=±.01 X=±.1			
ANGLES ±.5° ALLOVER FINISH 25 Ra			
CONCENTRICITY .005 TOTAL INDICATOR RUN OUT			
PERPENDICULAR ±.002 (UNLESS OTHERWISE SPECIFIED)			
NAME: LHeP22-NI and MP HRS with AP			
DWG #: S111/B111 Room Layout			SHT 3 OF 3
MATERIAL:			
DWN BY: JHK	DATE: 3JAN20	SCALE:	DWG SIZE: A
1ST CHK:	DATE:	2ND CHK:	DATE:
CUST: 32326, 32327, 32328			BTA: