

PART II PREPARATION AND OPERATION

3. INSTALLATION

A. Bench Mounted 9834

Do not use the detector in an area subject to extremes of ambient temperature; that is, where temperature may go below 16 F or above 122 F. Place the instrument on a level surface. Do not loosen the screws on the front plate. These are provided only to permit panel mounting the instrument. The chassis is removed from its case by taking out the two screws in the back end-plate, permitting chassis and front-plate to be drawn out through the front of the case.

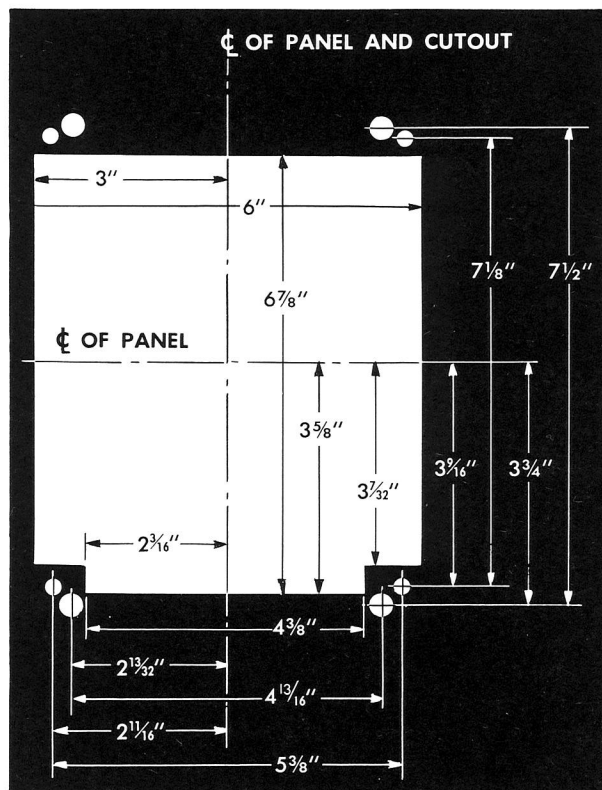
B. Panel Mounted 9834-1

To mount the housing for the 9834-1 chassis, a cutout must be made in the panel in accordance with dimensions given in Fig. 2.

The housing is secured against the back of the panel with four nuts and flat-head bolts, for which countersunk clearance holes must be drilled through the front of the panel. Clearance holes have been drilled through the flange of the housing for these bolts. In addition, there are four tapped holes in this flange for the corner screws on the front-plate of the instrument, for which clearance holes must also be drilled through the panel.

Remove the instrument chassis from the housing after loosening the four corner screws on the front plate.

Referring to Fig. 2, locate and drill the clearance holes through the panel, countersinking the four holes



Drill eight #2 clearance holes (.221"), as located by these dimensions, through the panel on which the instrument is to be mounted. Countersink the holes identified by the larger circle for the four #10 flathead screws furnished.

Fig. 2—Dimensions for panel mounting the 9834-1 Detector.

identified by the larger circle. Cut out the panel in accordance with dimensions on Fig. 2.

Mount the housing on the back of the panel, using the four flat-head screws in the countersunk holes. Four nuts are provided.

Run the line cord through the opening in back of the housing and slide the instrument into place.

Tighten the four corner screws.