

TEST NOTES

1. In socket voltage and resistance chart, the upper section of each block is resistance to chassis; lower section of each block is voltage to chassis. A dash indicates that no measurement was made.
2. Resistances are measured with tubes removed from their sockets. Values are in ohms.
3. Voltages are d-c except as indicated and are average values obtained with 115 volts a-c line voltage applied and detector input shorted.
4. All voltage and resistance values have a tolerance of $\pm 20\%$. All measurements are made with a 20,000 ohms-per-volt meter.

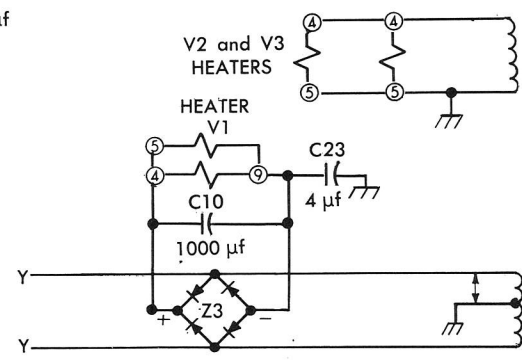


Fig. 7—Circuit diagram, voltage-resistance chart, and component part numbers.