

- INSTALLATION INSTRUCTIONS**
- 1- PUT BASE IN PLACE & MAKE CONDUIT CONNECTIONS. FASTEN COVERS (MI-28166-ITEM 4) TO BASE.
 - 2- PUT TRANSMITTER UNIT ON BASE AND FASTEN FRAME TO BASE WITH SCREW HEADS ON TOP.
 - 3- PUT AIR FILTER IN PLACE AND FASTEN TO BASE.
 - 4- REMOVE CONTROL PANEL SHIPPING SCREWS FROM THE RIGHT SIDE AND FASTEN FILLER STRIP (MI-28134 ITEM 3) TO FRAME - RIGHT FRONT. USE PLAIN WASHERS MI-28166 ITEM 9G NEXT TO FRAME THEN THE LOCKWASHERS & NUTS.
 - 5- REMOVE CONTROL PANEL SHIPPING SCREWS FROM THE LEFT SIDE. PUT FILLER STRIP (MI-28134 ITEM 2) ON FASTENING STUDS OF FRONT DOOR AND FASTEN THIS ASSEMBLY TO THE FRAME. (SEE NOTE 3)
 - 6- FASTEN THE METER PANEL TO THE FRAME AND MAKE WIRING CONNECTIONS PER W-309220 (FIGURE 15)
 - 7- FASTEN TRIM STRIPS (MI-28134 ITEMS 6 & 7) TO METER PANEL.
 - 8- FASTEN FILLER STRIPS (MI-28134 ITEM 1) TO BOTTOM FRONT AND BOTTOM REAR OF FRAME.
 - 9- REMOVE THE SHIPPING SCREWS HOLDING THE INTERLOCK PLATES TO FRAME AND FASTEN FILLER STRIP (MI-28134 ITEM 1) TO REAR TOP OF FRAME. REMOUNT THE INTERLOCK USING THE STUDS ON THE FILLER STRIP IN PLACE OF THE SHIPPING SCREWS.
 - 10- FASTEN FILLER STRIP (MI-28134 ITEM 5) TO LEFT REAR OF FRAME.
 - 11- PUT FILLER STRIP (MI-28134 ITEM 4) ON FASTENING STUDS OF REAR DOOR AND FASTEN THIS ASSEMBLY TO THE FRAME (SEE NOTE 3).
 - 12- INSTALL COUPLING ASSEMBLY (MI-28100 ITEM 2) PER DETAIL VIEW AND CONNECT SHIELDED LEADS TO OUTPUT METER (M301) LOCATED ON METER PANEL.
 - 13- ADD 90° ELBOW (MI-28166 ITEMS 7A & 7B) TO COUPLING ASSEMBLY. THIS ELBOW MAY BE TUNED EITHER UP OR DOWN UNLESS SPECIFIED ON INSTALLATION REQUIREMENT.
 - 14- INSTALL TRANSMISSION LINE MONITOR (MI-28155-1) ON WALL OR CEILING AT ANY CONVENIENT LOCATION IN LINE WITH THE TRANSMISSION LINE TO THE ANTENNA (M-446480).
 - 15- CONNECT TRANSMISSION LINE BETWEEN THE TRANSMITTER AND LINE MONITOR.
 - 16- ADD END SHIELDS (MI-28115 ITEMS 1 AND 2). COVER THE THREE UNUSED TRANSMISSION LINE OPENINGS USING COVERS (MI-28166 ITEM 3).
 - 17- CONNECT POWER LEADS, AUDIO INPUT AND LEADS BETWEEN LINE MONITOR AND TRANSMITTER PER M-44509B.
 - 18- CONNECT GROUND STRAP BETWEEN TRANSMITTER FRAME AND A GOOD GROUND.
 - 19- ADD MONOGRAM (MI-28166 ITEM 5) AND NAMEPLATE (MI-28166 ITEM 6) TO FRONT DOOR.
 - 20- ADD NAMEPLATE (MI-28180-1) TO INSIDE OF REAR DOOR.
 - 21- INSTALL FAN (MI-28100 ITEM 3) IN TOP OF CABINET AND CONNECT LEADS PER W309220 (FIGURE 15).
 - 22- MOUNT HIGH VOLTAGE TRANSFORMER, T303 (MI-28100 ITEM 4) ON REAR OF POWER PANEL AND CONNECT LEADS PER W-309220.
 - 23- PLUG IN CAPACITOR, C205 (MI-28100 ITEM 5) ON FRONT OF EXCITER POWER SUPPLY PANEL.
 - 24- PLUG IN RESISTOR, R210 (MI-28100 ITEM 6 C) ON REAR OF EXCITER POWER SUPPLY PANEL.
 - 25- PLUG IN RESISTOR, R302 (MI-28100 ITEM 6 A) ON BOTTOM OF AMPLIFIER CHASSIS.
 - 26- PLUG IN RESISTOR, R319 (MI-28100 ITEM 6 D) ON REAR OF POWER PANEL.
 - 27- PLUG IN RESISTORS, R304 & R305 (MI-28100 ITEMS 6E & 6B) ON FRONT OF AMPLIFIER PANEL.
 - 28- FILL MOTOR DAMPING ASSEMBLY ON FM EXCITER RE UNIT MI-28100 ITEM 1 WITH DAMPING FLUID MI-28100 ITEM 7 AS SHOWN IN FRONT VIEW OF EXCITER MOTOR.

Figure 11—Installation Plan Drawing

5x1.5

TWO
4-125A/4D21
POWER AMP

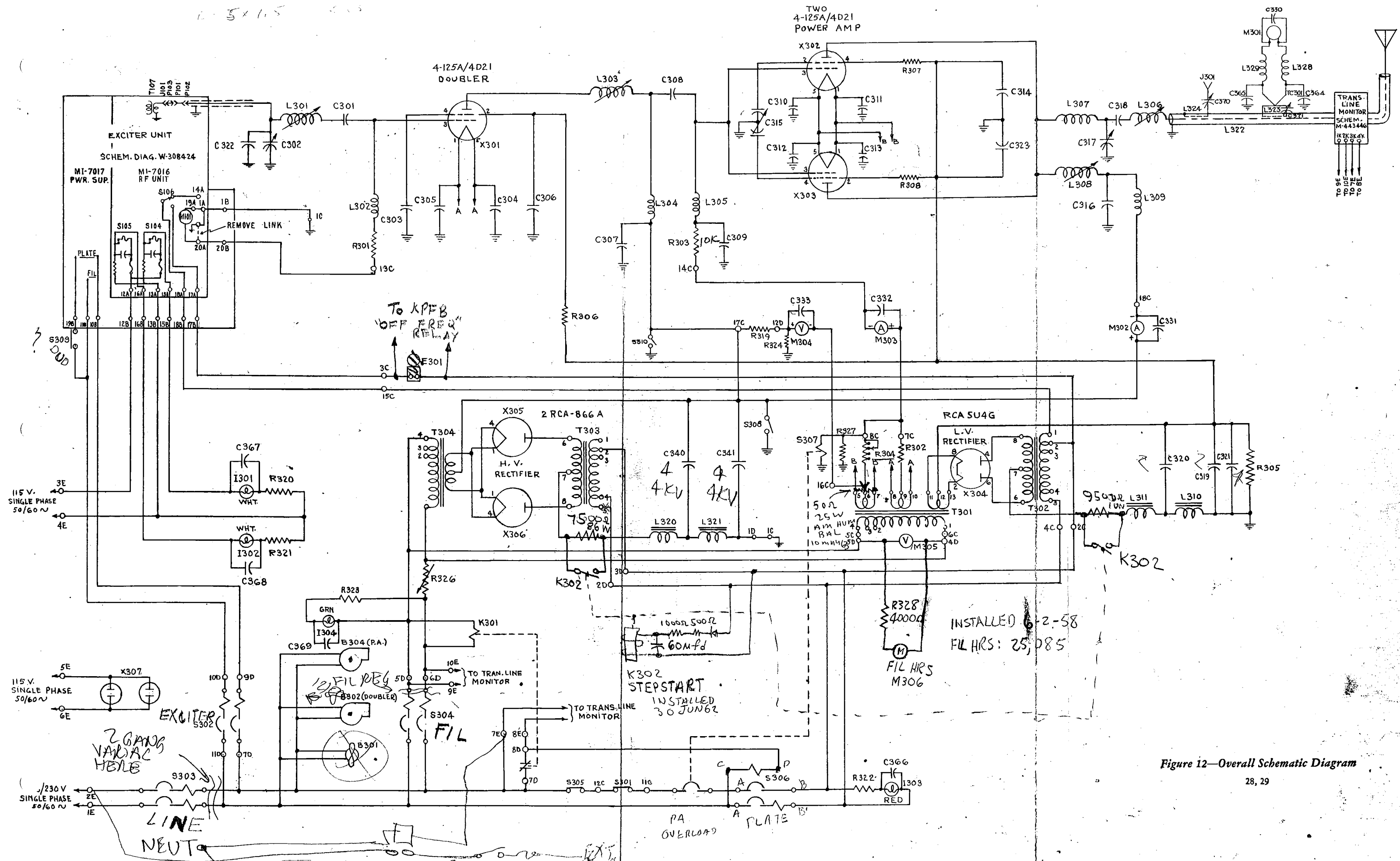
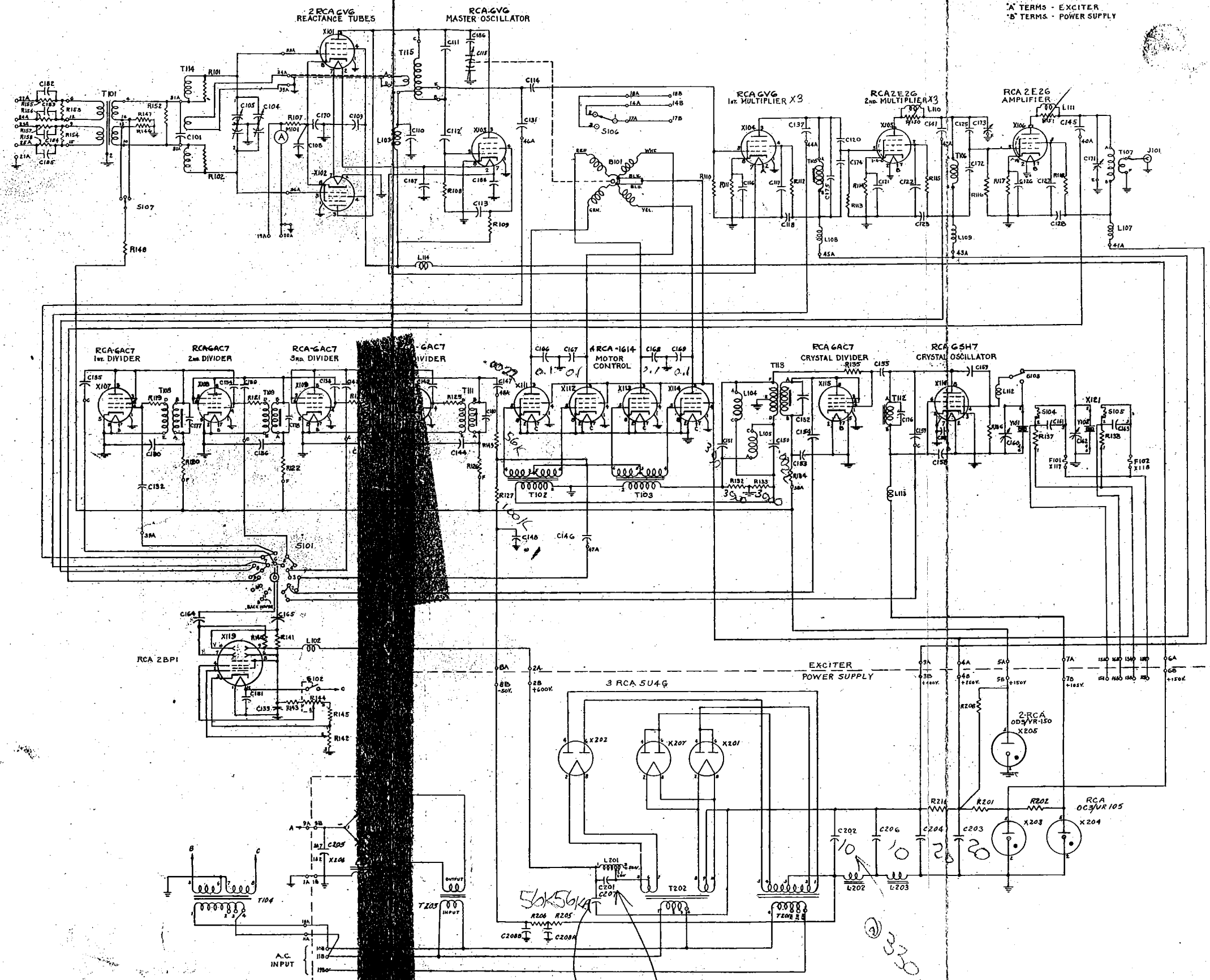


Figure 12—Overall Schematic Diagram



'A' TERMS - EXCITER
'B' TERMS - POWER SUPPLY

Figure 13—Exciter Schematic Diagram

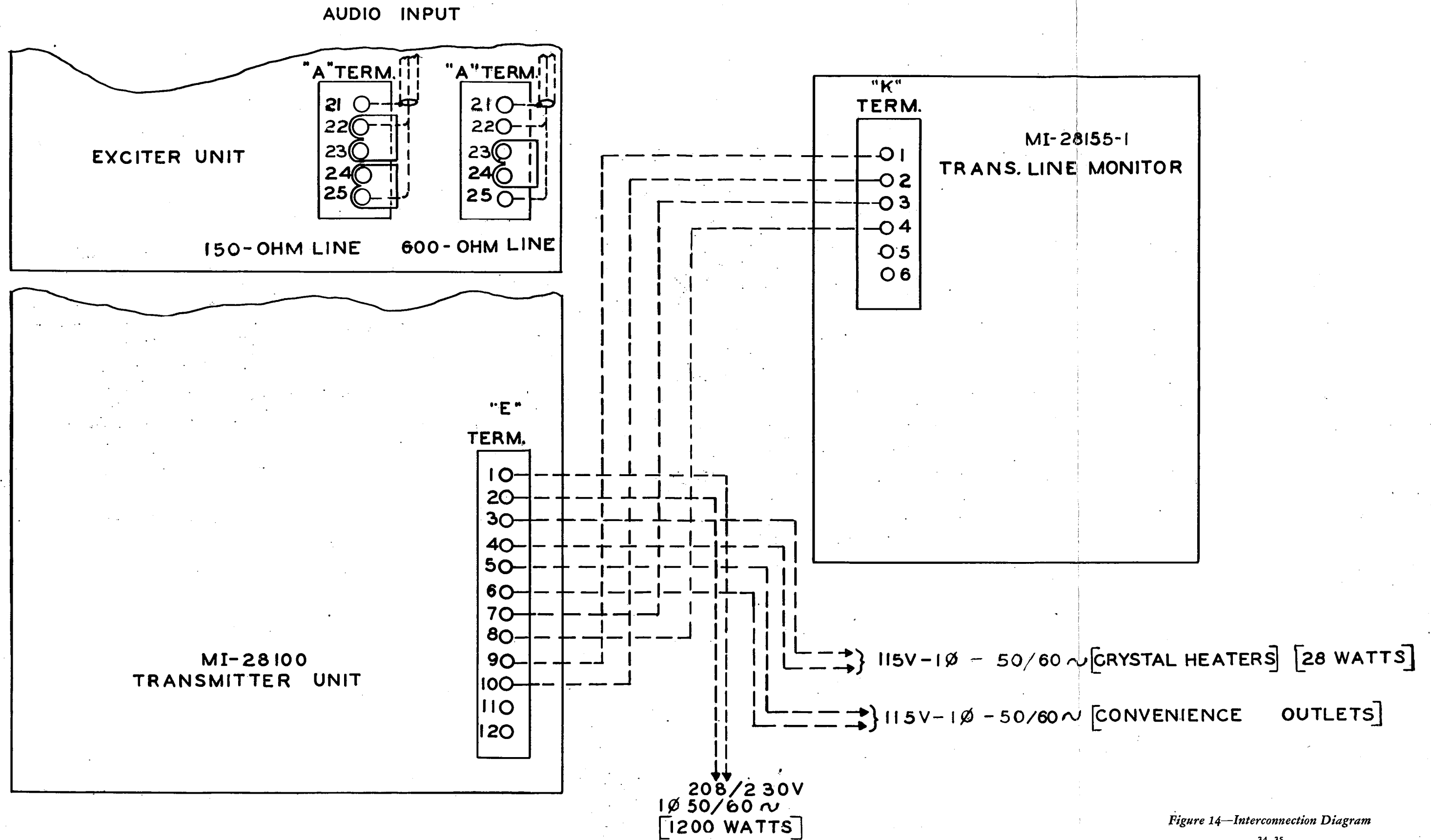


Figure 14—Interconnection Diagram

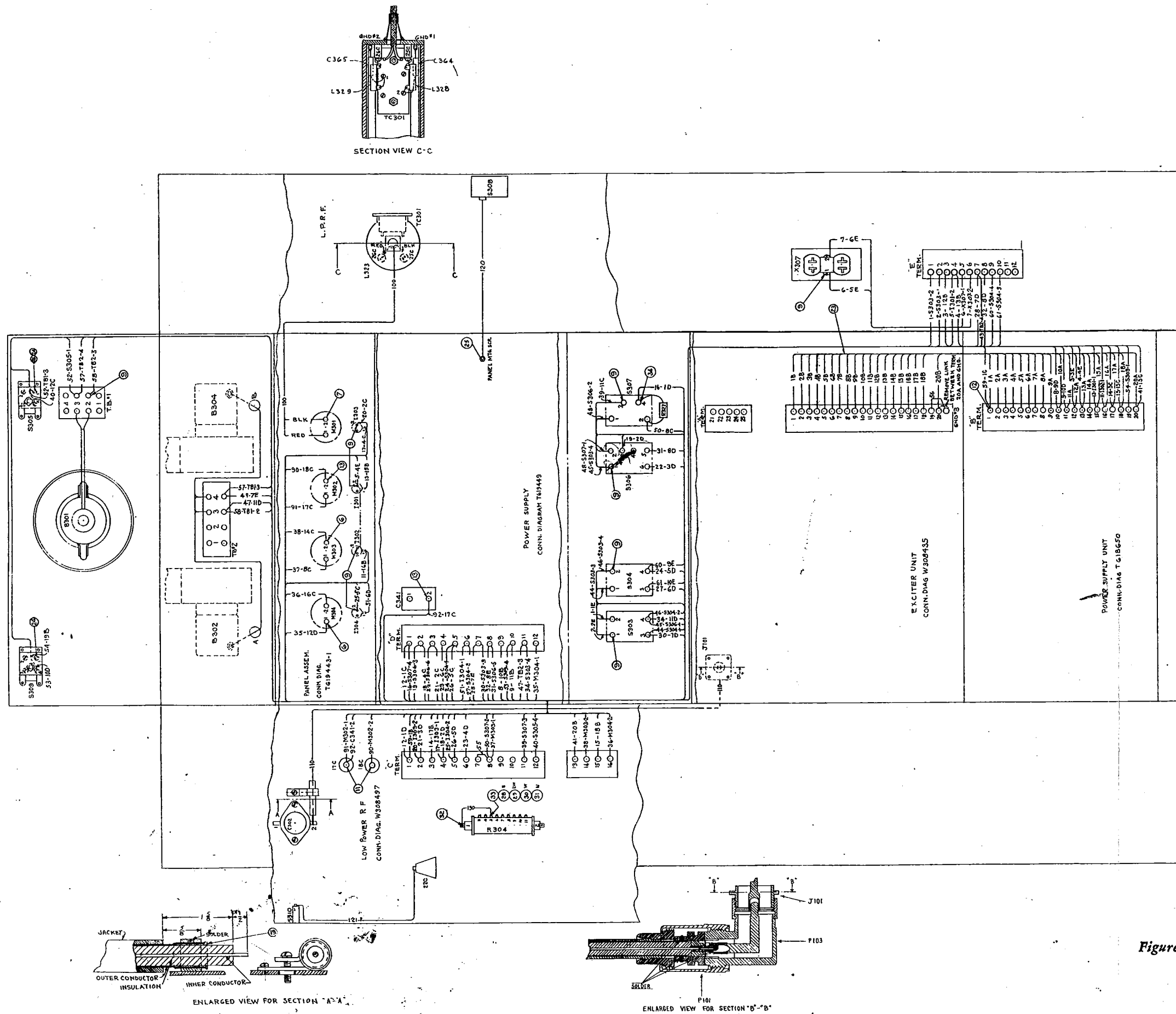


Figure 15—Transmitter Connection Diagram