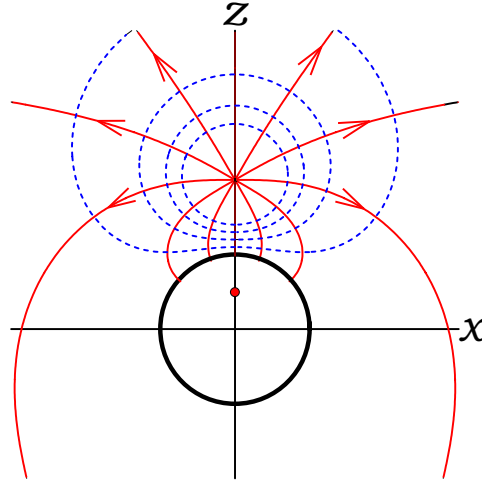


## COVER ART

The cover of *Electromagnetism* shows an example from Chapter 4—the idealized example of a point charge outside a conducting sphere. The field can be calculated by the method of images. (See Section 4.3.) Field lines and equipotentials are shown in the figure.



How does such an ideal mathematical figure relate to reality?

The question is reminiscent of William Blake's portrait of Isaac Newton. Blake's drawing shows Newton as a giant, but seated and bending forward to study an illuminated mathematical construction of a triangle on the ground in front of him. Behind is darkness and complexity, with life and mystery. Blake did not admire Newton; in a poem he wrote

“... May God us keep  
From single vision, and Newton's sleep.”

But the scientific revolution set in motion by Newton has so changed the human condition that Blake's mysticism seems unable to co-exist in modern thought.